

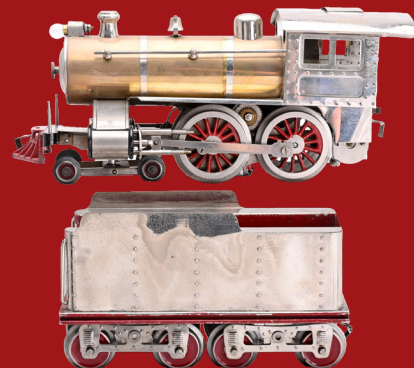
The Jerry Poch Train Collection

Session 10

Prewar American Trains

March 28th, 2026

Stout Auctions of West Middlesex, PA is honored to present session ten of the All Time Greatest Auction Series of quality, rare and diverse trains from the incredible Jerry Poch collection.



Please plan to attend this outstanding sale or join online at www.stoutauctions.com.

The sale will begin at 10AM ET.

Stout Auctions
2884 Mercer-West Middlesex Rd
West Middlesex, PA 16159
(724) 528-1500
katy@stoutauctions.com





2001

Lionel prewar O gauge two no. 57 orange lamp posts with Main Street and Broadway street names, C7.



2004

Lionel prewar O gauge four-wheel olive green passenger cars with orange inserts in OBs including; 529 Pullman with copper journals and a 530 observation car with nickel journals, C7-8. The car boxes are missing some interior flaps.



2002

Lionel prewar O gauge four-wheel freight cars with brass trim and nickel journals including; 805 pea green boxcar with orange roof and door guides and an 807 red caboose with peacock windows and roof in OB. The boxcar has a couple of minor nicks, otherwise is C8. The caboose is C8. The OB is missing a coupler flap.



2005

Lionel prewar O gauge 238E gunmetal Pennsylvania Torpedo style 4-4-2 steam engine with a 265W Lionel Lines tender that has nickel journals and automatic coupler. The loco is C7 and the tender is a C6-7.



2003

Lionel prewar O gauge 071 telegraph post set containing six 060 telegraph posts. The posts are orange with black bases, red cross arms, ivory insulators and brass finials, C6-7



2006

Lionel prewar O gauge 3651 black operating lumber car and a 2812 burnt orange rubber-stamped gondola. Both cars have high-rise simulated knuckle couplers. The cars are C7.



2007

Lionel prewar O gauge 3814 rubber-stamped merchandise car with high rise simulated knuckle couplers and black journals. The car has a dent in the middle of the roof, otherwise the car is C7-8.



2010

Lionel prewar O gauge pea green department store Special 1 passenger set in individual OBs and set box. The set contains the following; 253 electric 0-4-0 loco with brass trim, nickel journals, orange inserts and striping along the loco bottom edge, two 610 Pullmans and 612 observation car. The cars have orange inserts and nickel journals. The engine has been rewheeled. The paint on the set is clean with some minor scratches. Set is C7-8. The boxes are all marked correctly L.GREEN. The loco box is complete with all flaps. The car boxes are missing some flaps. The set box has two split corners and labels are intact.



2008

Lionel prewar O gauge no. 902B switcher/tender set containing a 227 black PRR 0-6-0 B-6 switcher with a 2227B Pennsylvania slope-back tender. The loco and tender are C7-8.



2011

Lionel prewar O gauge three no. 54 pea green double lamp posts, with one shade cracked. Also included is a no. 59 pea green single lamp post in OB. The 59 has a broken filigree section is broken out but included. The lamp posts are C5-6. The box is missing flaps on one end.



2009

Lionel prewar O gauge two 156 illuminated station platforms. The platforms are C7-8.



2012

Lionel prewar O gauge 260E master carton for a 260E gunmetal 2-4-2 steam loco with all nickel trim and two flags in original packet and 263T twelve-wheel tender with brass L plates, nickel trim and journals in individual OBs. The steam chest and boiler front appear to have been repainted. The tender front is showing signs of deterioration. Loco and tender are C7-8. The master carton and loco box are marked with a G for gunmetal. The master carton is stained and has all flaps attached. The loco box has an original cardboard insert. Loco and tender boxes are complete with all flaps.



2013

Lionel prewar O gauge freight cars with black journals, nickel trim and low-rise simulated knuckle couplers in OBs including; 2651 45N green lumber car with load, 2620 red searchlight car with gray painted die-cast searchlight head and a 2757 Tuscan illuminated Pennsylvania caboose with red window trim. The caboose has a broken coupler. The cars are C7-8. The boxes are missing some flaps.



2014

Lionel prewar three no. 76 block signals, one Mojave, one ivory and one white. The Mojave signal is C6. The ivory and white signals are C7.



2015

Lionel prewar O gauge scarce and unusual department store passenger set no. 5231E Q in individual OBs and set box. The set set contains the following; 262E black 2-4-2 steam loco with brass number plates under the cab windows and nickel trim, 261T Lionel Lines tender with brass and nickel trim and copper journals, 1686 baggage car in an incorrect 1687 box, 1685 Pullman and a 1687 observation car. The blue cars have silver roofs and inserts and nickel journals. The set is C7-8. The car boxes are all marked XB after the number. The individual OBs are complete with all flaps except for the tender box which has tape repair and is missing a coupler flap. The set box has a detached top flap and label is mostly intact.



2016

Lionel prewar O gauge no. 251E red 0-4-0 electric loco with ivory inserts and striping along the bottom edge, red lettered brass plates, brass and nickel trim. The engine has been rewheeled. The loco is C7.



2017

Lionel prewar O gauge lithographed freight set, circa 1940. The set contains the following; 229 black 2-4-2 steam engine with number plates mounted through the slots below the cab windows, 2689W Lionel Lines tender with black journals, 2677 burnt orange gondola with four wooden barrels, 2679 cream Baby Ruth boxcar with maroon roof, orange doors and door guides and 2682 red caboose with cream details. The set has high-rise simulated knuckle couplers. The engine and tender are C8 and the cars are C7-8. There are worn OBs for the tender and caboose.



2018

Lionel prewar O gauge 156 scarce olive green rubber-stamped New York Central Lines 4-4-4 Electric loco with red windows, brass and nickel trim, C7.



2019

Lionel prewar O gauge 226E black 2-6-4 steam loco, C7-8.



2022

Lionel prewar O gauge original box ONLY for a 313 Bascule bridge with four original cardboard inserts. Also included are two frames with two original packets that are complete with all contents. The OB is complete with all flaps but has some staining.



2020

Fantastic Lionel prewar O gauge two-tone blue passenger set no. 241E, circa 1933 in individual OBs and set box. The set contains the following; 260E black 2-4-2 steam loco with dark green frame, copper and brass trim, 260T twelve-wheel tender with dark green frame, brass and copper trim and copper journals, two 710 Pullmans and a 712 observation car. The cars have cream inserts and copper journals. The paint on the set is clean but has some minor nicks. The set is C7-8. Also included is a cardboard switch chart tag. The loco OB has an original cardboard insert. The loco and tender OBs are complete with all flaps. The car OBs have most all flaps. The set box is stamped BLUE below the label which is mostly intact and has all flaps with tape repair.



2023

Lionel prewar O gauge very scarce 262 Macys loco and tender in master carton containing the following; 262 black 2-4-2 steam loco with unusual red striping, brass and copper trim and a 262T black Lionel Lines tender with brass trim and copper journals individual OBs. The loco is C7-8 and the tender is C8. The master carton has all flaps attached and is sealed on one end. The individual loco OB has an original cardboard insert and is missing all flaps on one end. The tender box is missing all flaps on one end. Both loco and tender have original paper wrap.



2021

Lionel prewar O gauge original box ONLY for a 165 remote control magnet crane with original cardboard insert. The label is intact with some fading.



2024

Lionel prewar O gauge freight cars with black journals including; two 2654 gray Sunoco tank cars, one with black dome and trim and one with nickel dome and trim and a broken coupler and a 2672 Tuscan Pennsylvania caboose with an incorrect postwar coupler. The cars are C6.



2025

Lionel prewar O gauge Hiawatha Milwaukee Road passenger set no. 755W in individual OBs and set box. The set contains the following; 250E Hiawatha 2-4-2 steam loco, 250WX twelve-wheel Lionel Lines tender with maroon frame and nickel journals, two 782T vestibules, with one OB, 782 front coach with repainted head end casting, 783 center coach, 784 observation car, no. 166 whistle controller, box of connecting ties, instruction booklet and sheet. The orange cars have gray roofs and die-cast maroon underbellies. The underbellies are solid and straight. The set is C7-8. The individual OBs are complete with all flaps. The set box is complete with all flaps but is stained and shows wear. The label is intact.



2028

Lionel prewar O gauge semi-scale 2954 Pennsylvania boxcar with high-rise simulated knuckle couplers and black journals in OB with original cardboard insert and cotton wrap. The car is C7-8. The box is complete with all flaps.



2029

Lionel prewar O gauge semi-scale 2957 die-cast New York Central caboose that has a high-rise simulated knuckle coupler and black journals. The catwalk is solid and straight. The caboose is C7-8.



2026

Lionel prewar O gauge original box ONLY for a 96 electric remote control coal elevator with hand operated conveyor. Also included is an original box ONLY for a 315 trestle bridge. The boxes have all flaps attached. The 96 box has one split corner. The label on the 315 box is skinned.



2030

Lionel prewar O gauge Hale Brother maroon passenger set no. H 1, circa 1931 individual OBs and set box. The set contains the following; 252 electric 0-4-0 loco with cream striping on the bottom edge of the loco, brass and nickel trim, two 607 Pullmans, 608 observation car, 81 rheostat, lockon and wires. The cars have cream inserts, nickel journals and no interior lights. The set is C6-7. Loco box is missing all end flaps. The passenger car boxes have all end flaps. The set box is stamped with H 1 on the label and has tears through that label. Individual boxes have WINE and S stamped on the ends.



2027

Lionel prewar O gauge outfit 903B consisting of a 228 PRR B-6 0-6-0 switcher numbered 8976 under the cab windows with a 2228B Pennsylvania slope-back tender. The switcher and tender are C7-8.



2031

Lionel prewar O gauge 289E uncataloged streamlined 2-4-2 gunmetal steam loco with all nickel trim, circa 1937, C7.



2034

Lionel prewar O gauge original set box ONLY for a 291W Red Comet Passenger set, circa 1936. This set contained the following; 264E Commodore Vanderbilt steam loco, 265W tender two 603 Pullmans and a 604 observation car. The cars for this set have light red underbellies. Also included is a Lionel Whistle Controller instruction sheet. The set box is complete with all flaps. and label is intact.



2032

Lionel prewar O gauge no. 265E black Commodore Vanderbilt 2-4-2 steam loco and a 2225W Lionel Lines tender with black journals in OBs. The loco and tender have nickel trim. The die-cast cab section of the loco has been repainted. The loco and tender are C6. The loco OB has an original cardboard insert and has all flaps attached, some with tape repair. The tender OB is missing both coupler flaps.



2035

Lionel prewar O gauge uncataloged special red passenger set containing; 259 black 2-4-2 steam loco with nickel trim, 1588T four-wheel Lionel Lines tender with no journals and nickel trim, two 629 Pullmans and a 630 observation car. The four-wheel red cars have cream inserts and nickel journals. The set is C7.



2033

Lionel prewar O gauge desirable Red Comet passenger set no. 268E or 278E circa 1935 in individual OBs. The set contains the following; 264E red Commodore Vanderbilt 2-4-2 steam loco with brass L plate on boiler front and nickel trim, 261T Lionel Lines tender with brass Lionel Lines plates, nickel trim and journals, two 603 Pullmans and a 604 observation car. The cars have white inserts, black air tanks, nickel trim and journals. The die-cast cab on the loco is intact with the inside section repainted. The loco and cars are C7-8. The tender is C8. The individual OBs are missing some flaps.



2036

Lionel prewar O gauge original set box ONLY for a red Special 3 passenger set. This box could have either a 253 loco, three 607 Pullmans and a 608 observation car or a 248 loco, two 603 Pullmans and a 604 observation car. Also included with the box is an original instruction booklet and original cardboard inserts for the box. The top lid and bottom of the box are both dated 1930. The box has no split corners and label is intact.



2037

Lionel prewar O gauge 258 black 2-4-0 steam loco with brass and copper trim and orange striping and a 257T four-wheel Lionel Lines tender with brass trim, orange striping and nickel journals. The loco and tender are C7.



2040

Lionel prewar O gauge very scarce peacock Illinois Central passenger set no. 296, circa 1929-30 in individual OBs and set box. The set contains the following; 252 electric 0-4-0 loco with black frame, hand reverse and brass and nickel trim, two 607 Pullmans and a 608 observation car. The cars have ILLINOIS CENTRAL above the windows, orange inserts and nickel journals. The set is C7-8. The individual OBs have most all flaps. The set box has tape repaired corners on the lid and both labels are intact.



2038

Lionel prewar O gauge orange Macys Special passenger set no. 142E in individual OBs. The set contains the following; 254E electric 0-4-0 loco with red lettered brass plates, brass and nickel trim, two 605 Pullmans and a 606 observation car with a Macy Special drumhead on the observation deck railing. Cars have ivory inserts, apple green doors and copper journals. The wheels on the engine are disintegrating. The engine is C8. The passenger cars are C7-8. The loco box is complete with all flaps. The boxes are all stamped YELLOW



2041

Lionel prewar O gauge two no. 655 cream rubber-stamped boxcars with brown roofs and door guides, one with black trim and one with nickel trim and a 654 gray Sunoco tank car with black dome and trim all in OBs. The cars have black journals and low-rise simulated knuckle couplers. The cars are C7-8. The OBs have most all flaps attached.



2039

Lionel prewar O gauge 1668 black Torpedo style 2-6-2 steam loco with a 1689W Lionel Lines tender with black journals and low-rise simulated knuckle couplers, C8.



2042

Lionel prewar O gauge 763E black semi-scale 4-6-4 Hudson steam loco and a 2226WX rubber-stamped Lionel Lines tender with high-rise simulated knuckle couplers and black journals in OBs. The loco and tender are C8. The loco box is missing all flaps on one end and is split down one side. The tender OB is missing flaps and is worn.



2043

Lionel prewar no. 62 apple green single semaphore in OB. Also included is an 068 pea green crossing signal with brass cross buck and finial and a 69N red electric warning bell signal with nickel bell mechanism, cross buck and finial. The accessories are C7. The box is missing flaps and has tape repair.



2046

Lionel prewar O gauge 2758 Pennsylvania automobile car in an OB and a 3814 Lionel Lines merchandise car with black frame and journals. The cars have high-rise simulated knuckle couplers and black journals. The 3814 car has damage on the bottom and is C6. The 2758 car is C7-8. The box has tape repaired flaps.



2044

Lionel prewar O gauge 262E black 2-4-2 steam loco with nickel trim and brass plates under the cab windows and a 265T Lionel Lines tender with nickel trim and journals. The loco and tender are C7-8.



2047

Lionel prewar O gauge 225E black 2-6-2 steam loco with nickel trim, C7-8.



2045

Lionel prewar O gauge yellow and brown City of Denver streamlined passenger set no. 299W in individual OBs and set box. The set contains the following; 636W power car, two 637 coaches, 638 observation car and three vestibules. The paint on this train is bright and clean. Set is C7-8. Also included is an original box and instruction sheet ONLY for a no. 66 Whistle controller missing all flaps on one end and original paper wrap for the loco. The individual OBs are missing some flaps. The set box is complete with all flaps and label is intact.



2048

Lionel prewar O gauge 225E gunmetal 2-6-2 steam loco with a 2225WX waffle top Lionel Lines tender with nickel trim and black journals in OB. The loco and tender are C7-8. The box is missing a coupler flap.



2049

Lionel prewar O gauge 1717 lithographed tan and brown gondola with latch coupler and nickel journals, C6. Also included is a 2812 burnt orange rubber-stamped gondola with low-rise simulated knuckle couplers, nickel brake wheels and black journals.



2052

Lionel prewar original set box ONLY with label missing that indicates the set number. The box lid is numbered 390-85 30 and the box bottom is numbered 390-84 30. The top label is intact and the side label on the box is completely missing. Also included is another Lionel prewar set box ONLY missing the label indicating the set number and has staining and wear. The side of the box is stamped 1088W. There is also a prewar box included with no number on the label. Please view photo to verify condition of the boxes.



2050

Fantastic Lionel prewar O gauge red and maroon Rail Chief passenger set no. 709W in individual OBs for the cars and one 752T. The set contains a 700E scale die-cast Hudson 4-6-4 steam loco with serial no. 381132, circa 1938, 700W twelve-wheel die-cast New York Central tender, 792 baggage/coach combo, two 793 coaches, 794 observation car, three 792T vestibules, instruction sheets, sixteen no. 771 curve T-Rail track sections and four 772 straight T-Rail track sections. The set does not have much run time and paint is bright and clean. The underbellies are straight and solid. Set is C8. The car boxes are incredible, very clean and square and are sealed on one end.



2053

Lionel prewar O gauge 249E gunmetal 2-4-2 steam loco with all nickel trim and a 265T waffle top Lionel Lines tender with nickel trim and journals. The loco is C7-8 and the tender is C8.



2051

Lionel prewar O gauge original passenger car boxes ONLY for the Rail Chief set no. 709W including; 792 baggage/coach combo, two 793 coaches and a 794 observation car. The box is complete with all flaps except for one coach box which is missing one end flap.



2054

Lionel prewar O gauge Lionel Jr. promotional red and aluminum passenger set no. 6501W, circa 1936 individual OBs and set box. The set contains the following; 259E black 2-4-2 steam loco with brass L plates under the cab windows and nickel trim, 1689W Lionel Lines tender with nickel trim and journals, 1703 head end Pullman, three 1701 coaches, 1702 observation car, type W 75-watts transformer, lockon and wires. The cars have nickel plates and journals. One of the coaches has a small spot of rust on the roof, otherwise the set is C7. The loco box has an original cardboard insert. The individual OBs are missing some flaps. The set box is complete with all flaps and label is intact.



2055

Lionel prewar O gauge eight-wheel freight cars with black journals including; 3652 operating log dump car missing load with nickel trim in a OB, two 3652 yellow operating gondola with nickel trim, a 2660 operating work crane with cream cab, red roof, dark olive boom, two black wheels and nickel plate in a OB and a 2657 red caboose with cream window inserts, aluminum end rails in an OB. The caboose is C7-8 and the rest of the cars are C7. All of the boxes are worn and the 2660 box is missing some flaps.



2056

Lionel prewar O gauge 262E black 2-4-2 steam loco with copper and brass trim, C6-7.



2057

Lionel prewar O gauge 257T four-wheel black crackle Lionel Lines tender with brass and copper trim and copper journals in OB and a 259T four-wheel Lionel Lines tender with brass trim and journals. The tenders are C8. The OB is complete with all flaps.



2058

Lionel prewar O gauge 257T four-wheel black Lionel Lines tender with brass trim, orange striping and nickel journals and a 2689W eight-wheel gunmetal Lionel Lines tender with nickel trim and journals. The tenders are C7.



2059

Lionel prewar O gauge two 64 highway lamp posts, one an unusual lime green color missing the finial and the top is broken and one 45N green. The 45N lamp post is C7. Also included are four no. 64 highway lamp post boxes and two original cardboard inserts. The boxes are complete with all flaps except for one box which is missing an end flap.



2060

Lionel prewar O gauge 260E master carton containing the following in individual OBs; 260E black 2-4-2 steam loco with rare orange striping, brass and copper trim and a 260T eight-wheel tender with rare orange striping, brass and copper trim and nickel journals. The loco and tender are C7. The loco box has an original cardboard insert. The individual OBs are clean and complete with all flaps. The master carton is complete with all flaps and shows wear.



2061

Lionel prewar O gauge three no. 56 45N green lamp posts, one which has been repainted and a no. 56 olive green lamp post missing the lamp housing. Also included is one worn OB. Please view photo to verify selection and condition.



2064

Lionel prewar O gauge chrome Flying Yankee streamlined passenger set no. 267W, circa 1935 version with black roof on the loco and chrome tail on the observation car in individual OBs and set box. The set contains the following: 616W loco with whistle, two 617 coaches, 618 observation car and three vestibules. The loco is C7 and the cars are C7-8. The individual OBs have all flaps attached except for some coupler flaps and have some tape repair. The set box is complete with all flaps, has tape repair and label is fully intact.



2062

Lionel prewar O gauge 238E gunmetal Pennsylvania torpedo type 4-4-2 steam loco with a 2225WX Lionel Lines waffle top tender with nickel trim, black journals and high-rise simulated knuckle couplers. The loco is C7 and the tender is C6-7. The loco is in an OB that is complete with all flaps.



2065

Lionel prewar O gauge 259E black 2-4-0 steam loco with brass and copper trim and a 259T four-wheel Lionel Lines tender with brass trim and copper journals. The wheels on the loco have been painted. The loco and tender are C6-7.



2063

Lionel prewar O gauge semi-scale 2957 die-cast New York Central caboose that has a high-rise simulated knuckle coupler and black journals. The catwalk is solid and straight. The caboose is C6-7.



2066

Lionel prewar nine original wooden bulb boxes including; two no. 30 14-volts, three no. 46 8-volts, no. 24 8-volts and others unmarked, 1038 30-watts transformer and a 1028 Lionel Jr. 25-watts transformer in OB. Some of the containers have the bulbs in them. Also included is a selection of reproduction logs and barrels. Please view photo to verify selection and condition.



2067

Lionel prewar O gauge blue passenger set no. 274W, circa 1935. The set contains the following; 265E black 2-4-2 Commodore Vanderbilt stem loco with brass L on the boiler front and nickel trim, 265W Lionel Lines tender with nickel trim and journals, 602 baggage, 600 Pullman and a 601 observation car. The loco is the correct version for 1935 that has no firebox doors in the cab. The cars have aluminum roofs and inserts and nickel trim and journals. The die-cast loco cab has been repainted. The loco has a bend in the metal below the cab and is C6. The tender and cars are C7-8. The loco and cars have OBs that are missing some flaps. The loco OB has one original cardboard insert.



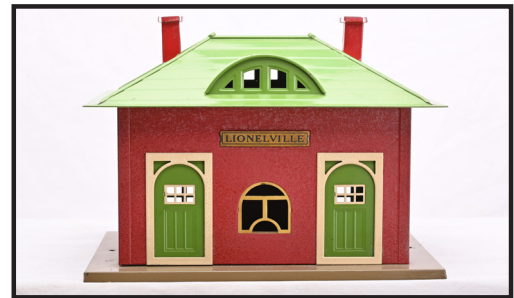
2070

Lionel prewar standard gauge maroon Special passenger set in individual OBs and set box. The set contains the following; no. 8 electric 0-4-0 loco with cream inserts, brass and nickel trim, no. 32 baggage with wood grain doors, a no. 36 observation car and eight curve track sections. The cars have gold window trim, brass steps, nickel journals and NEW YORK CENTRAL LINES above the windows. The engine has been rewheeled. The set is C7. The individual boxes are all stamped WINE. The individual boxes are missing one flap. The set box has repaired corners and both labels are intact.



2068

Lionel prewar O gauge original boxes ONLY for 251 Gray electric loco and a selection of steam engines and tenders. Please view photo to verify selection and condition.



2071

Lionel prewar 126 illuminated Lionelville station with Mojave base, crackle red walls, pea green roof, door and window inserts, ivory door and window frames and brass plates. The station is C7.



2069

Lionel prewar O gauge original boxes ONLY for passenger cars, freight cars and accessories. Please view photo to verify selection and condition.



2072

Lionel prewar standard gauge no. 38 rare red rubber-stamped New York Central Lines 0-4-0 electric loco with tan window trim and striping along the bottom edge, brass and nickel trim. The engine is C6.



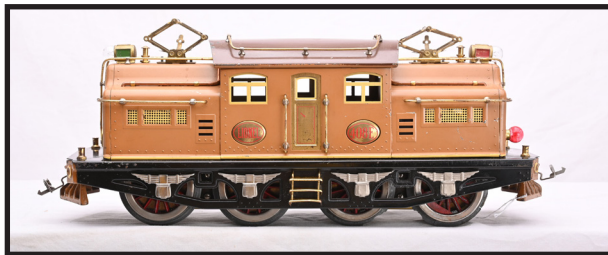
2073

Lionel prewar standard gauge 280 45N green single span bridge with nickel plate and straight track section in OB. The paint on the station is bright and clean with a few minor nicks. The bridge is C7-8. The OB is complete with all flaps. The label is on the cut end and is mostly intact.



2076

Lionel prewar standard gauge maroon passenger set no. 394, circa 1929. The set contains the following; 390 black 2-4-2 steam loco with brass and copper trim and orange striping, 390T Lionel Lines tender with brass trim orange striping, 500-series trucks and nickel journals, 320 baggage car with dark green doors, two 319 Pullmans and a 322 observation car. The cars have Mojave inserts, 500-series trucks and nickel journals. The baggage car and observation car have THE LIONEL LINES above the windows and the two Pullmans have THE NEW YORK CENTRAL LINES above the windows. The engine has been rewheeled and the striping on the loco frame has been redone. The set is C7.



2074

Lionel prewar standard gauge two-tone brown 408E electric 0-4-4-0 loco from the 411E State set, circa 1930-33. This loco is the version with the dark brown roof. Loco has red lettered brass plates, brass and copper trim, cream inserts and striping. The loco has two Bild-A-Loce motors. The pantographs have been replaced. There is a crease/bend in the middle of the brown roof and has some paint chipping. The roof is C5, the rest of the loco is C6.



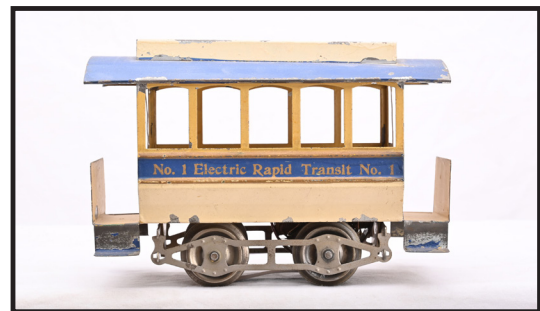
2077

Lionel prewar 922 illuminated lamp terrace with a 56 copper lamp post, C7.



2075

Lionel prewar standard gauge 927 ornamental flag plot with nickel pole base and black finial in a worn and damaged OB. The plot is C6-7. Half of the label on the box is missing.



2078

Lionel prewar standard gauge scarce no. 1 trolley with a new departure motor, circa 1906-07. The trolley has a yellow body, blue band under the windows and blue roof with an unpunched yellow clerestory. The trolley is rubber-stamped No. 1 Electric Rapid Transit No. 1 under the windows and on each end, has open platform ends, five windows that are not embossed and has solid steps. The trolley is C5.



2079

Lionel prewar standard gauge 914 park landscape with urn in center. All four trees are missing. The rest of the shrubbery is intact. The plot is C6-7.



2082

Lionel prewar standard gauge no. 11 brown flatcar rubber-stamped Pennsylvania R. R. with two large brake wheels. Flatcar is C6.



2080

Lionel prewar standard gauge no. 6 steam 4-4-0 loco with scarce Pennsylvania lettering under the cab window, thick rimmed wheels, Russian blue iron boiler, red windows, pedestal headlight and nickel trim with an eight-wheel tender which is lettered Pennsylvania, has a red stripe along the frame edge and is embossed LIONEL MFG. CO. N.Y. on the underside of the frame, circa 1912. The cab roof on the loco has two bent corners. The loco and tender are C5.



2083

Lionel prewar standard gauge no. 15 maroon Pennsylvania R. R. tank car, circa 1912-14 with black dome four-piece gold steps and gold railing in OB. The car is missing one coupler and is C6-7. The box is missing one interior flap.



2081

Lionel prewar standard gauge scarce original box ONLY for a no. 6 loco and tender, circa 1912-14. The box has an original cardboard insert and all flaps are attached. The label is mostly intact. The box has some repair and does show wear due to age.



2084

Lionel prewar standard gauge no. 16 ballast car which is the later Lionel Corporation production with dark green body, girder, coupler and maroon trim. The car is lettered in black PENNSYLVANIA 65784. The car is C7-8.



2085

Lionel prewar standard gauge no. 13 pea green cattle car rubber-stamped on the underside. The paint is very clean with a few minor nicks, C7-8.



2088

Lionel prewar standard gauge scarce 385E black steam 2-4-2 loco with brass LL plates under the cab windows, nickel and copper trim and a 384T Lionel Lines tender that has brass plates, nickel trim and journals in OBs with original cardboard inserts. This is very unusual black loco and tender with a mix of nickel, copper and brass trim, C7. The OBs are complete with all flaps.



2086

Lionel prewar standard gauge pea green Macys Special no. 2 passenger set in set box, circa 1932. The set contains a no. 8E electric 0-4-0 loco with brass inserts and red lettered brass plates, two 337 Pullmans, a 338 observation with a Macy Special drumhead on the end railing, eight curve track sections and two straight track sections. The cars have cream inserts and nickel journals. The set is C6-7. The set box has one detached side flap with tape residue.



2089

Lionel prewar standard gauge no. 67 dark green double lamp post version with small cast iron base in OB. Lamp post is C7-8. The OB is missing flaps on one end and shows wear.



2087

Lionel prewar standard gauge no. 61 dark green electric lamp post in harder to find early OB. The is the early version with the larger shade and base, C6. The OB has label intact.



2090

Lionel prewar standard gauge no. 42 dark olive green rubber-stamped New York Central Lines 0-4-4-0 electric loco with single motor, thick rimmed wheels, round hood, red window trim and striping along the bottom edge, brass and nickel trim. Loco is C6-7.



2091

Lionel prewar standard gauge 438 illuminated signal tower late version with black base, aluminum tower, black upper base, white walls, red roof, doors, windows and ladder and nickel plate in OB. The roof is C7 and the rest of the station is C7-8. The OB is complete with all flaps and label is on the open end and is skinned.



2094

Lionel prewar standard gauge dark olive green passenger set no. 34, circa 1920-23. The set contains the following; 33 rubber-stamped New York Central Lines 0-4-0 electric loco with red window trim and striping along the bottom edge of the body, brass and nickel trim, 35 Pullman and a 36 observation car. The dark olive green passenger cars have NEW YORK CENTRAL LINES above the windows. The set is C7-8.



2092

Lionel prewar standard gauge 392E gunmetal 4-4-2 steam loco with nickel trim and a 392W twelve-wheel Lionel Lines tender with a brass L on the back of the tender, nickel trim, red and nickel plates and nickel journals in OBs. The loco and tender are C7-8. The loco box has an original cardboard insert. The tender box has some tape repair. The boxes are complete with all flaps.



2095

Lionel prewar standard gauge no. 32 dark olive green baggage car with wood grain doors and NEW YORK CENTRAL LINES above the windows, C7.



2093

Lionel prewar standard gauge 80N semaphore with red base, aluminum pole, black ladder and nickel finial in a worn OB that has an original cardboard insert and an 82N semaphore with 45N green base, aluminum pole, black ladder and nickel finial, C7. The box is missing all end flaps.



2096

Lionel prewar standard gauge no. 2 red and cream powered trolley with six embossed windows, partially closed clerestory, closed end flush platforms with three windows and gold rubber-stamped 2 ELECTRIC RAPID TRANSIT 2, circa 1911-12. The trolley is embossed LIONEL MFG. CO. N.Y. on the underside and is in a worn OB. The trolley is C5. The label on the box is partially intact.



2097

Lionel prewar standard gauge no. 200 red and cream non-powered trailer trolley with six embossed windows, partially closed clerestory, closed end platforms with projecting three window section and gold rubber-stamped 200 ELECTRIC RAPID TRANSIT 200, circa 1910-11. The trolley is embossed LIONEL MFG. CO. N.Y. on the underside. The trolley is C4.



2100

Lionel prewar standard gauge Transcontinental Limited two-tone brown State set no. 411E, circa 1930-33. The set contains the following; a 408E State brown 0-4-4-0 electric loco with red lettered brass plates, cream inserts and striping and two Super motors, 412 California Pullman, 413 Colorado Pullman, 414 Illinois Pullman and a 416 New York observation car. The cars have light brown roof ventilators, cream window inserts, brass trim and die-cast journals. The interiors in all of the cars are original and complete. The roof on the loco has some paint missing along the edges and is C6-7. The dark brown roofs on the passenger cars have some paint scuffing. The cars are C7.



2098

Lionel prewar standard gauge 94 high tension tower with dark red base, aluminum tower, brass plate and six original white porcelain insulators, C7.



2101

Lionel prewar standard gauge five no. 60 gray telegraph poles with maroon cross arms, clean insulators and brass finials, C7-8. Also included are six original no. 60 telegraph pole boxes. The OBs are clean and complete with all flaps.



2099

Lionel prewar standard gauge 94 high tension tower with light red base, aluminum tower, brass plate and six original white porcelain insulators, C7.



2102

Lionel prewar standard gauge scarce and desirable no. 10 gray 0-4-0 electric loco with black lettered brass plates, brass trim, nickel spring journal boxes and dark green frame in OB with an original cardboard tray. The paint and trim on this engine is very bright and clean, C8. The OB is complete with all flaps.



2103

Lionel prewar standard gauge gray passenger cars with maroon inserts and roofs and nickel journals including; 332 baggage, 339 Pullman and a 341 observation car. The cars are C8 except for the roofs which have been repainted.



2104

Lionel prewar standard gauge original boxes ONLY for the following passenger cars; 332 baggage, 339 Pullman and a 341 observation car. The boxes are all marked WINE and have X stamped after the car number. The 341 box has some staining on one end. The boxes are complete with all flaps.



2105

Lionel prewar standard gauge 437 illuminated switch signal tower with paper instruction sheet pasted to the underside of the base, Mojave base, terra cotta lower walls, ivory band between floors, cream upper walls, orange window inserts, peacock roof, lithographed red brick chimney in OB. The instruction sheet is fully intact. The upper section above the knife switches has most all of the paint flaked off and the cream section has some paint flaking on all sides, otherwise the rest of the station is C7-8. The OB is complete with all flaps and label is mostly intact on the cut end.



2106

Lionel prewar standard gauge 392E black 4-4-2 steam loco with a chugger, brass and copper trim and a 384T crackle black Lionel Lines tender with brass and copper trim and copper journals, circa 1932 in OBs. The loco and tender are C7-8. The tender box is stamped 384TX. The OBs are complete with all flaps and both have original cardboard inserts



2107

Lionel prewar standard gauge three two-tone Stephen Girard green passenger cars with cream inserts, brass trim and journals in OBs including; 424 Liberty Bell Pullman, 425 Stephen Girard Pullman and a 426 Coral Isle observation car. The cars are C7-8. The OBs are all marked APPLE and are complete with all flaps. The boxes are all dated 1931.



2108

Lionel prewar standard gauge 1910 dark olive green rubber-stamped New York New Haven and Hartford 0-6-0 electric loco, version with square hood, maroon ventilators and roof vents, nickel and gold trim, circa 1910-11. The loco has been restored.



2109

Lionel prewar standard gauge two no. 112 dark olive green N.Y.N.H. and H. gondolas with red interiors, body rim and bottom edge, yellow primer on the underside of the cars and are embossed LIONEL MFG. CO. N.Y. on the undersides. The cars are C4.



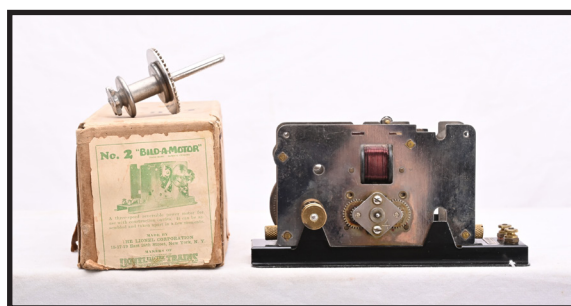
2112

Lionel prewar standard gauge no. 33 gray, gold rubber-stamped NEW YORK CENTRAL LINES 0-4-0 electric loco with red window trim and rim along the bottom edge, gold and nickel trim, C6.



2110

Lionel prewar standard gauge 408E apple green electric 0-4-4-0 loco with red lettered brass plates, brass and copper trim and nickel spring journal boxes. The loco has been rewheeled. The loco is C7-8.



2113

Lionel prewar standard gauge no. 2 Bild-A-Loce motor with a black base in OB. One of the wheels with gear has some corrosion and is C6. The rest of the motor is C7-8. The OB has no split corners and label is intact.



2111

Lionel prewar no. 186 set of five no. 184 illuminated lithographed bungalows, three with red roofs and two with green roofs. The bungalows are C7-8. The set is in the bottom of an original yellow box bottom with a worn original cardboard insert. The box bottom has tape repaired corners. The lid is missing.



2114

Lionel prewar standard gauge no. 14 red C.M. and St.P. boxcar early version with yellow primer on underside of frame and yellow primer interior numbered 9050, circa 1908-09. The car has black painted ribs and the frame is embossed LIONEL MFG. CO. N.Y. on the underside. The car has 10-series open sided three rivet trucks with embossed spring detail. The car is C5.



2115

Lionel prewar standard gauge 116 maroon N.Y.N.H. and H. ballast car with full yellow primer on the underside and embossed LIONEL MFG. CO N.Y. The car has paint flaking and is C4-5.



2118

Lionel prewar standard gauge freight set no. 39, circa 1913. The set contains the following; no. 38 dark olive rubber-stamped New York Central Lines 0-4-0 electric loco with maroon windows, brass and nickel trim and two 116 maroon N.Y.N.H. and H. ballast cars embossed LIONEL MFG. CO. N.Y. on the underside of the frames. One hand rail on the loco is loose. One coupler on one of the ballast cars was detached but is now attached with a copper wire. The loco is C6 and the cars are C5-6.



2116

Lionel prewar standard gauge 380E maroon 0-4-0 electric loco with black lettered brass plates, red Es stamped on the doors on both sides, brass and nickel trim and a Super Motor. The loco has been rewheeled. The loco is C7.



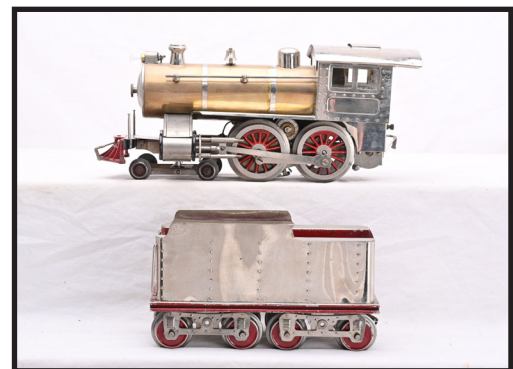
2119

Lionel prewar standard gauge original set box ONLY for a no. 39 freight set, circa 1920-23. This set contained the following; 38 maroon electric loco, 116 maroon N.Y.N.H. and H.R.R. ballast car and a 117 maroon NYC and HRRR caboose numbered 4351. The box has both labels intact.



2117

Lionel prewar standard gauge 439 crackle red panel board with white marble composition panel board, brass trim and plates in OB, C7-8. The OB has one detached top flap which is included and all other flaps are attached. The label is intact.



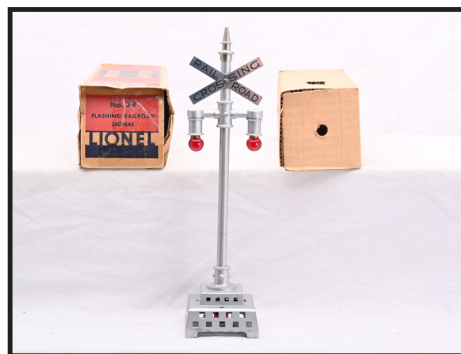
2120

Lionel prewar standard gauge no. 7 nickel and brass 4-4-0 steam loco, circa 1918-23 with thick-rimmed wheels and strap headlight. Also included is a nickel eight-wheel tender with red interior and frame and single rivet open sided trucks that have embossed spring detail. The tender is missing one coupler. The loco and tender are C7-8.



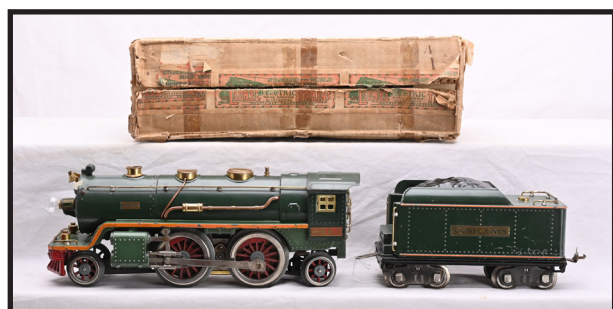
2121

Lionel prewar standard gauge two no. 25 illuminated bumpers with nickel light covers, one cream with red details and one black. Also include in an original no. 25 box. The cream bumper is C6-7 and the black bumper is C6. The box is complete with all flaps.



2124

Lionel prewar standard gauge no. 79 die-cast aluminum flashing crossing signal with nickel cross buck and finial in OB with original cardboard insert. The signal is C8. The OB is missing two interior flaps and shows wear.



2122

Lionel prewar standard gauge 390E scarce two-tone green 2-4-2 steam loco, with green frame, orange stripe, brass and copper trim and a 384T dark green Lionel Lines tender with orange striping, brass trim and nickel journals, circa 1929. The loco and tender are C6-7. The loco is in an OB that is complete with all flaps and shows wear. The box is dated 1929.



2125

Lionel prewar standard gauge very scarce no. 29 maroon day coach, circa 1910. The coach which is stamped 29 NYC and HRRR 29 has ten embossed windows, open end platforms with twin railings and chains, three-rivet open truck, three high knobs on the roofs, no clerestory openings and two black wooden air tanks. One of the sides of the end railings is missing. The day coach is C4.



2123

Lionel prewar standard gauge peacock passenger cars with orange inserts and nickel journals in OBs including: 332 baggage car, 339 Pullman and a 341 observation car, C7-8. The boxes are complete with all flaps and stamped P. BLUE.



2126

Lionel prewar 189 illuminated villa with gray base, mustard walls and dormers, apple green roof, white window inserts and terra cotta chimney. The villa is C7-8.



2127

Lionel prewar 189 illuminated villa with terra cotta base, white walls, peacock entry roof, pea green windows, Mojave chimney base and a red chimney. The roof is very unusual and is repainted in shades of browns, ivory and green. The underside of the roof is unpainted. The villa is C7-8.



2130

Lionel prewar standard gauge 400E gunmetal steam loco, version with a chugger, painted boiler bands, brass and copper trim and black wheels and a 400T Lionel Lines tender with black lettered brass plates, brass and copper trim and brass journals both in OBs. Loco and tender are C7-8. The loco box has an original cardboard insert. The boxes are complete with all flaps, some with tape repair and show wear.



2128

Lionel prewar standard gauge 38 scarce Mojave rubber-stamped New York Central Lines 0-4-0 electric loco with red window trim and striping along the bottom of the frame, brass and nickel trim. the roof has a very large scratch and is C5. The rest of the engine is C7.



2131

Lionel prewar standard gauge 215 ivory tank car with Sunoco decals, brass trim, black lettered brass LIONEL LINES plates and red lettered brass NO. 215 OIL CAR plates and copper journals in OB. Both Sunoco decals are intact. The tank is C7-8. The OB is complete with all flaps and is stamped WHITE.



2129

Lionel prewar standard gauge 79 flashing railroad signal with an ivory die-cast base and pole, gold painted die-cast cross arms and a brass cross buck sign and finial, C6-7.



2132

Lionel prewar standard gauge 215 ivory Sunoco tank car, brass trim, black lettered brass LIONEL LINES plates and red lettered brass NO. 215 OIL CAR plates and copper journals, C7-8.



2133

Lionel prewar standard gauge 216 dark green hopper with black lettered brass plates, brass trim and copper journals, C7-8.



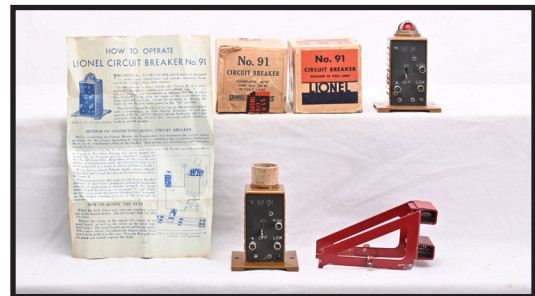
2136

Lionel prewar standard gauge very scarce and desirable 217 red caboose with nickel plated ends, cream doors, aluminum window inserts, black lettered brass plates and copper journals in OB, C6. The OB is complete with all flaps with two detached flap which are included.



2134

Lionel prewar standard gauge 218 Mojave dump car, version with painted ends, black lettered brass plates, single brass knob and copper journals. The painted ends have paint flaking. The rest of the dump is C7-8.



2137

Lionel prewar standard gauge two no. 91 State brown circuit breakers with nickel light covers in OBs and a no. 23 red bumper. There is an original cardboard ring and instruction sheet for one of the circuit breakers, which is C8. The other 91 and 23 are C7. One of the boxes is missing a flap and both boxes show wear.



2135

Lionel prewar standard gauge 219 derrick with peacock cab, dark green roof, red boom and window inserts, brass trim, three nickel knobs and copper journals. The derrick has a broken coupler and is C7.



2138

Lionel prewar standard gauge later version 53 NYC 0-4-0 brown electric locomotive. The loco is gold rubber-stamping that reads NEW YORK CENTRAL LINES in oval, gold painted handrails and nickel trim. The loco is missing one set of steps and has a repainted roof. The loco body is C6.



2139

Lionel prewar 191 illuminated villa with Mojave base, crackle red walls and dormers, pea green roof, ivory windows and doors and a brick lithographed chimney. The villa is C7-8.



2142

Lionel prewar standard gauge no. 33 black 0-6-0 rubber-stamped New York Central Lines electric loco, circa 1913 with pedestal headlight, red window trim and striping on the frame base, brass and nickel trim. The loco is C7.



2140

Lionel prewar standard gauge two-tone Blue Comet passenger cars with cream inserts, brass trim and journals in individual OBs including; 420 Faye Pullman, 421 Westphal Pullman and a 422 Tempel observation car. These passenger cars are very unusual with a cream stripe painted through the windows around the cars. We are unable to verify the authenticity of this striping. The interiors of the cars are original and complete. The roof on the Faye Pullman is C6. The rest of the cars are C7. All three boxes are stamped SPECIAL DISPLAY. The boxes are complete with all flaps with some tape repair.



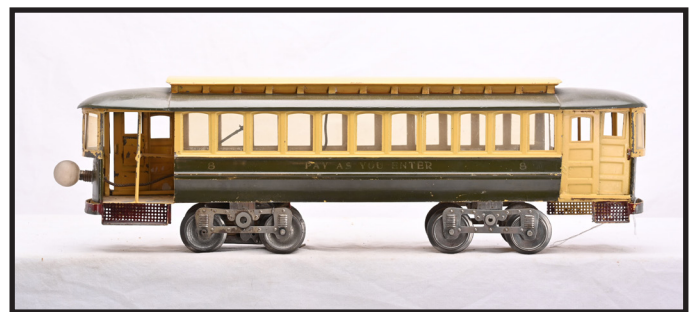
2143

Lionel prewar standard gauge two no. 112 dark olive green N.Y.N.H. and H. gondolas with red edging, circa 1912-13. The cars are embossed on the underside LIONEL MFG. CO. N.Y. and are 6 1/2 inches long. The cars are C5.



2141

Lionel prewar standard gauge two no. 61 State brown lamp posts with small bases and shades in two worn boxes. The lamp posts are C6-7. The boxes are missing some flaps.



2144

Lionel prewar standard gauge hard to find no. 8 Pay As You Enter Trolley with dark green sides, roof, platform and lower panels, cream windows, door and clerestory roof, maroon steps and lettered under the windows 8 PAY AS YOU ENTER 8. The trolley has been partially restored.



2145

Lionel prewar standard gauge 214 yellow boxcar with brown roof and door guides and mixed trim including; black lettered brass plates, nickel trim and journals in OB, C7. The OB is stained and worn.



2148

Lionel prewar standard gauge olive green passenger set no. 347E in individual OBs and set box. This set is missing the 8E electric loco. Included with this set is a 337 Pullman and a 338 observation car. The cars have maroon inserts, nickel journals and THE LIONEL LINES above the windows. The cars are C7. The OBs are complete with all flaps. The set box has two split corners on the lid but both labels are intact.



2146

Lionel prewar standard gauge 215 silver Sunoco tank car with mixed trim including; black lettered nickel plates, brass railing, nickel trim and journals in OB. The decals are mostly intact. The car is C6. The OB is complete with all flaps.



2149

Lionel prewar standard gauge 332 olive green baggage car with red windows, plates and doors, nickel journals and THE LIONEL LINES above window and door sections in OB. The car is C7-8. The OB is complete with all flaps.



2147

Lionel prewar standard gauge, scarce no. 8 dark olive green electric 0-4-0 loco with black lettered brass plates brass and nickel trim in OB. The loco has been rewheeled with brass wheels. Loco is C6. The OB is complete with all flaps.



2150

Lionel prewar standard gauge scarce and desirable no. 10 dark olive green Interurban powered with one motor and NEW YORK CENTRAL LINES above the windows, circa 1911-12. The Interurban has three high roof knobs, maroon primer on the underside and interior of the body. The interurban is C6.



2151

Lionel prewar standard gauge scarce 1010 dark olive green Interurban trailer, circa 1911-12. The Interurban has three high knobs on the roof, maroon primer on the underside and interior of the car and embossed LIONEL MFG. Co. N.Y. on underside. The Interurban has two broken couplers and is C5.



2154

Lionel prewar standard gauge 318 gray 0-4-0 electric loco with black lettered brass plates, brass and nickel trim, strap headlights, Super motor and combination latch couplers. The loco has been rewheeled and is C7-8.



2152

Lionel prewar 87 die-cast railroad crossing signal with very dark green base, Stephen Girard green box, ivory head and red bulls eye in OB, C6-7. The OB is missing one interior flap with tape repair.



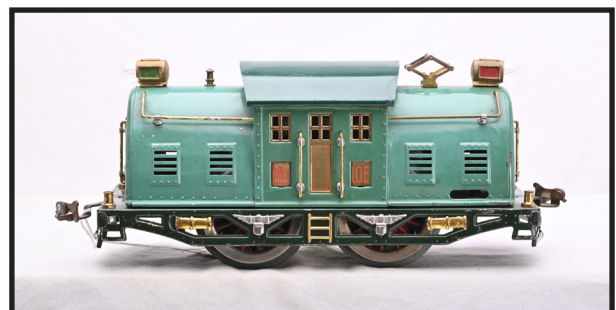
2155

Lionel prewar standard gauge 116 illuminated Lionel City station with red base, window and door inserts and skylights, ivory walls, aluminum painted light fixtures and nickel clock inserts. The roof, skylights and base have surface corrosion and are C5. The walls on the station are clean and are C8.



2153

Lionel prewar 87 die-cast railroad crossing signal with dark green base, cream box, white head and red bulls eye in a damaged OB. The signal is C7-8. The box is missing flaps.



2156

Lionel prewar standard gauge unique and unusual 10E peacock 0-4-0 electric loco with dark green cab roof and frame. The engine has a Bild-A-Loco motor, red lettered brass plates, brass and nickel trim. The loco black lights as all original. The cab roof has two spots of paint flaking. The loco is C6-7.



2157

Lionel prewar standard gauge peacock passenger cars with orange inserts and nickel journals including; 332 baggage car, 339 Pullman and a 341 observation car. The cars are C7-8. There are original boxes for the 332 and 339 cars which are complete with all flaps.



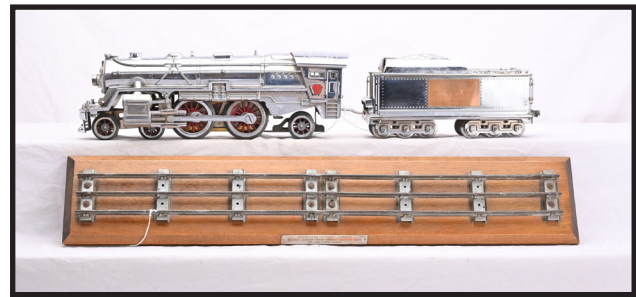
2158

Lionel prewar standard gauge 332 peacock baggage with orange inserts, red doors and nickel journals, circa 1929. There is paint flaking on both ends of the car. Car is C6.



2159

Lionel prewar standard gauge two no. 67 dark green double lamp posts, versions with small cast iron bases and small shades. The lamp posts are C7.



2160

Lionel prewar standard gauge very unique chrome-plated presentation award 392E steam 4-4-2 loco and 392T twelve-wheel tender with wooden board that has two straight track section. The board has a plaque that reads PRESENTED TO FRED L. HIRSCH AGENCY LEADER-INTER-AGENCY CONTEST 1939 BY LEM C. SWINNEY. The tender has a copper plaque on one side that reads WON BY FRED L. HIRSCH PACIFIC MUTUAL INTER AGENCY 1939 and a MKT herald plate on the other side. The chrome on the loco and tender is bright and clean.



2161

Lionel prewar standard gauge no. 86 set of six no. 85 orange telegraph posts with black bases, red cross arms, white insulators and brass finials in yellow OB that has an original cardboard insert. Also included are three no. 85 orange telegraph posts with two bases. One of the posts is missing the original white insulator. All of the telegraph posts are C6-7. The box lid is missing all side piece. The box bottom is heavily damaged.



2162

Lionel prewar standard gauge original boxes ONLY for a 400E Blue Comet steam engine and a 400T tender. The loco box is stamped 400E BLUE FOR DISPLAY in black and the tender box is stamped 400T BLUE. Both boxes are dated 1931 and are complete with all flaps.



2163

Lionel prewar standard gauge no. 29 dark olive green day coach, circa 1918-22 with ten windows, gold striping below the windows, 29 NEW YORK CENTRAL LINES 29 stamped under the windows on both sides of the car, have black wooden air tanks, three holes in the steps and a single gold chains on each or the end platforms. The cars are gold rubber-stamped on the undersides MADE IN U.S.A. THE LIONEL CORPORATION NEW YORK. The car is C7.



2166

Lionel prewar standard gauge 213 Mojave cattle car with maroon roof and door guides, black lettered brass plates and trim and nickel journals in OB, C6-7. The box is complete with all flaps.



2164

Lionel prewar standard gauge no. 29 dark olive green day coach, circa 1918-22 with ten windows, gold striping below the windows, 29 NEW YORK CENTRAL LINES 29 stamped under the windows on both sides of the car, have black wooden air tanks, three holes in the steps and a single gold chain on each or the end platforms. The cars are gold rubber-stamped on the undersides MADE IN U.S.A. THE LIONEL CORPORATION NEW YORK. The car is C6-7.



2167

Lionel prewar standard gauge no. 214 terra cotta boxcar with dark green roof and door guides, black lettered brass plates, brass trim and nickel journals in OB. The car is C7. The OB is complete with all flaps.



2165

Lionel prewar standard gauge no. 212 gray gondola with six bow-sided barrels, black lettered brass plates, brass trim and nickel journals, circa 1926 in OB, C6. The OB is complete with all flaps and shows wear.



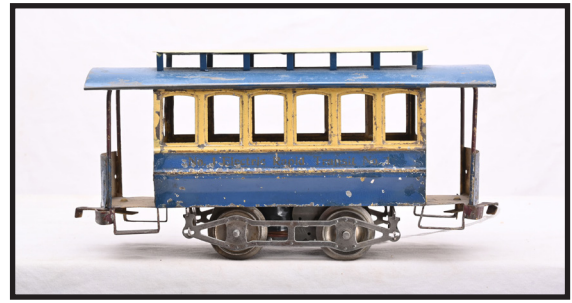
2168

Lionel prewar standard gauge no. 217 orange caboos with maroon roof and inserts, dark green end railings and nickel journals, C7-8.



2169

Lionel prewar 208 aluminum tool box with nickel handle and set of six nickel plated cast iron tools in OB, C8. The OB is clean and complete with all flaps.



2172

Lionel prewar standard gauge no. 1 motorized Electric Rapid Transit trolley, circa 1912 with blue body and roof, band under the window that reads No. 1 ELECTRIC RAPID TRANSIT No. 1, yellow clerestory and window band section, six embossed windows and open end platforms with poles. The underside of the trolley is embossed LIONEL MFG. CO N.Y. The trolley has some paint touch up on the sides. The trolley is C4-5.



2170

Lionel prewar standard gauge dark olive green passenger cars with scarce PENNSYLVANIA lettering above the windows on the 19 Baggage/Pullman car and 18 Pullman and NEW YORK CENTRAL LINES above the windows on the 190 observation car with long deck. All cars have block lettering below the windows, maroon doors, three hole steps, black wooden air tanks and are embossed LIONEL MFG. CO. N.Y on the underside of the frame. The 19 has some paint touch up on the roof. The cars are C5. There are individual OBs for the 19 and 190 cars and a shipping carton from Lionel. The bottom of the shipping box has a shipping label from Lionel. The individual OBs are damaged. The label on the 190 box is mostly intact.



2173

Lionel prewar standard gauge original set box ONLY for a set with original cardboard dividers, circa 1917-19. The set number is worn off of the box. The box has two split corners, the top label is fully intact and the side label is mostly intact.



2171

Lionel prewar standard gauge 116 maroon N.Y.N.H. and H.R.R. ballast car with dark olive striping along the frame top and a 117 red NYC and HRRR caboose numbered 4351 with a black roof. The cars have black trucks and are C6-7.



2174

Lionel prewar standard gauge no. 50 dark gray gold rubber-stamped New York Central Lines 0-4-0 electric loco with red window frames, brass and nickel trim and a Super Motor, circa 1924. The roof on the loco is dented. Loco is C5.



2175

Lionel prewar standard gauge original scarce set box ONLY for passenger set no. 6907W, circa 1936. The box has a R.H. Macy and Co. shipping label on one of the flaps and is dated 1936. The box has been opened from the bottom and has one interior flap detached but included and one split corner. The label has nice color graphics and is fully intact. The box shows wear. This set contained the following; 392E black loco 384T tender, 1766 Pullman, 1767 baggage and a 1768 observation car. The cars are red with nickel trim.



2178

Lionel prewar standard gauge no. 83 die-cast traffic and crossing signal with red base, cream box and ivory head, C7-8.



2179

Lionel prewar standard gauge two no. 83 die-cast traffic and crossing signals, one with dark green base, cream box and white head and one with a Mojave base, cream box and white head. The die-casting on one side of the cream box on the signal with the dark green base is damaged. The die-casting on the cream box on the signal with the Mojave base is damaged and the white head has been repainted. The signals are C5.



2176

Lionel prewar standard gauge 385E gunmetal 2-4-2 steam loco with brass LL plates under the cab windows and nickel trim and a 385W The Lionel Railway Lines die-cast tender that has black and brass plates, nickel trim and journals in OBs. Loco and tender are C7-8. The loco box has an original cardboard insert. The boxes are complete with all flaps attached.



2177

Lionel prewar standard gauge very scarce and desirable 217 red caboose with nickel plated ends, cream doors, aluminum window inserts, black lettered nickel plates and copper journals in OB, C6. The OB is complete with all flaps.



2180

Lionel prewar standard gauge 381E State Green 4-4-4 electric loco with an apple green sub frame, red lettered brass plates and brass and copper trim in OB. The engine has been rewheeled and is C7-8. The box is missing two exterior flaps on one end and has some tape repair.



2181

Lionel prewar standard gauge accessories including; three 88 rheostats two with OBs, 66 whistle controller and a 167 whistle controller in OB with original cardboard insert, C6-7. The boxes have most all flaps attached.



2184

Lionel prewar standard gauge maroon passenger cars with nickel journals and NEW YORK CENTRAL LINES above the windows including; 31 baggage/Pullman car with wood grain baggage doors, two 35 Pullmans and a 36 observation car. The cars are C6.



2182

Lionel prewar standard gauge unusual 384T black crackle Lionel Lines tender with brass and copper trim and copper journals in OB stamped 384TX BLACK. The tender has a couple rubs on the top otherwise is C8. The OB is complete with all flaps and has an original cardboard insert.



2185

Lionel prewar standard gauge 155 illuminated freight shed with white base, red floor, aluminum posts and finials, gray roof trimmed in red and brass plates in a worn and damaged OB, C6-7. The box is missing all flaps except for one interior flap on one end.



2183

Lionel prewar standard gauge two sets of four 209 wooden barrels, one bow-sided set and one straight sided set. Also included is a 209 barrel set OB. The barrels are C8. The box is missing two interior flaps and has one detached end flap which is included.



2186

Lionel prewar standard gauge orange passenger cars with wood grain doors and NEW YORK CENTRAL LINES above the windows including; 32 baggage and a 31 baggage/Pullman combo car. The cars are C6-7.



2187

Lionel prewar standard gauge no. 52 die-cast aluminum painted lamp post and a 77 crossing gate with black base and red mechanism with black cover. The 52 is C7 and the 77 is C7-8.



2190

Lionel prewar standard gauge two 511 green flatcars with wood loads, nickel stakes and journals, one with gold rubber-stamping and one with silver rubber-stamping in OBs, C7-8. The OBs have all flaps attached except for the coupler flaps.



2188

Lionel prewar standard gauge 392E black 4-4-2 steam loco with brass and copper trim in OB with original cardboard insert. The engine is C7-8. The box is complete with all flaps.



2191

Lionel prewar standard gauge 511 medium green gondola with all nickel trim and journals in OB. The car has a couple of minor nicks, otherwise is C8. The box has reproduction flaps on one end and taped flaps on the other end. Also included is an original box for a 512 gondola missing all flaps on one end.



2189

Lionel prewar standard gauge 392W twelve-wheel Lionel Lines tender with black and brass plates, brass trim and nickel journals. The tender has been restored.



2192

Lionel prewar standard gauge 513 cream cattle car with maroon roof and door guides, all nickel trim and journals in OB, C7-8. The box is missing one coupler flap.



2193

Lionel prewar standard gauge 514R ivory refrigerator car with light blue roof, white doors, nickel trim and journals. Except for a couple of minor nicks the car is C8. The car is in a worn OB.



2196

Lionel prewar standard gauge 516 red hopper with all nickel trim and journals, C7-8.



2194

Lionel prewar standard gauge 514 yellow boxcar with brown roof and door guides, nickel trim and journals in OB, C7-8. The OB is complete with all flaps except for the coupler flaps.



2197

Lionel prewar standard gauge 520 floodlight car with 45N green base, nickel trim and journals in OB, C7-8. The OB is complete with all flaps except for the coupler flaps.



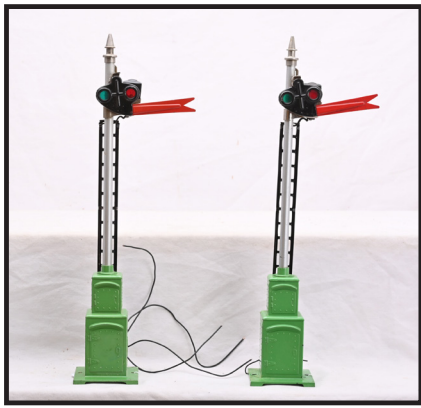
2195

Lionel prewar standard gauge 515 orange Shell tank car with all nickel trim and journals, C7.



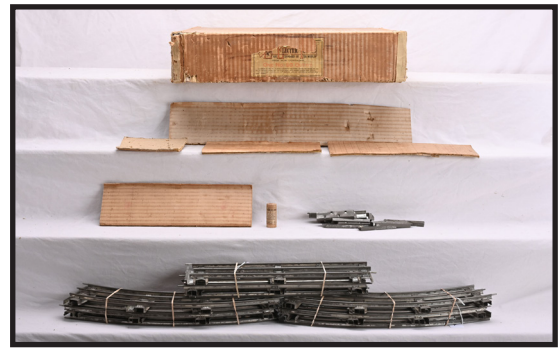
2198

Lionel prewar standard gauge 517 red caboose with aluminum painted end railings, nickel trim and journals in OB, C7. The box is complete with all flaps except for one coupler flap. One side of the box has a tear.



2199

Lionel prewar standard gauge two 99N semaphores with 45N die-cast bases, aluminum poles, black ladders and nickel finials, C7.



2202

Lionel prewar standard gauge set box ONLY for passenger set no. 50, circa 1911-12. with five original cardboard dividers. This set contained the following; 5 special loco and tender, 181 baggage/Pullman combo, 180 Pullman and a 182 observation car. included with the set is a wooden no. 28 4-volt bulb box, track clips, eight curve track sections and four straight track sections. The label on the box is partially intact. The lid has a label inside which is fully intact.



2200

Lionel prewar standard gauge unusual and hard to find promotional dark green passenger set no. 349, circa 1929. The set contains the following; no. 9 Bild-A-Loce electric loco with reverse knob, black lettered brass plates and brass trim, 429 Pullman/Baggage car, 428 Pullman and a 430 observation car. The cars have orange inserts, maroon doors and nickel journals. The loco has been rewheeled and has paint touch up. The loco is C6. The cars have small spots of paint touch up and look C7.



2203

Lionel prewar standard gauge no. 5 steam 0-4-0 loco with scarce Pennsylvania lettering, circa 1912. The loco has a Russian blue boiler, thick-rimmed drivers, high coal bunker, light terminal on the bunker, pedestal headlight and turned flag stanchion. The loco is C7.



2201

Lionel prewar standard gauge 428 dark green Parlor car with orange window inserts, maroon doors and nickel journals in a worn and damaged box. The car has small spots of paint touch up and looks C7.



2204

Lionel prewar standard gauge eight-wheel slope-back tender lettered N.Y.C. and H.R.R.R. with red trim. The tender is embossed LIONEL MFG. CO. N.Y. on the underside. The tender is C5.



2205

Lionel prewar standard gauge maroon passenger cars including; 181 Baggage/Pullman, 180 Pullman and a 182 observation car with a long deck. The cars have NEW YORK CENTRAL LINES above the windows. The baggage/combo has a different style lettering and steps than the 180 and 182 cars. The cars are embossed on the underside LIONEL MFG. CO. N.Y. The roofs are C6 and the bodies are C7.



2206

Lionel prewar standard gauge two no. 67 dark green double lamp posts with small shades and bases. The lamp posts are C6-7.



2207

Lionel prewar standard gauge two no. 61 dark green lamp posts with small shades and bases, C6-7.



2208

Lionel prewar standard gauge eight-wheel slope-back tender with scarce Pennsylvania lettering, circa 1918 or later. The tender has red trim and is rubber-stamped MADE IN U.S.A. THE LIONEL CORPORATION NEW YORK on the underside. The tender is C6-7.



2209

Lionel prewar standard gauge no. 190 dark olive green observation car with short deck, NEW YORK CENTRAL LINES above the windows and combination latch couplers. The car is rubber-stamped MADE IN U.S.A. THE LIONEL CORPORATION NEW YORK on the underside. The car is C6.



2210

Lionel prewar standard gauge no. 42 dark olive green 0-4-4-0 electric loco with square hood and thick-rimmed drivers, circa 1913. The loco is rubber-stamped NEW YORK CENTRAL LINES in block lettering and has maroon vents, windows and ventilators, nickel and gold trim and a pedestal light. The loco is C6.



2211

Lionel prewar standard gauge original boxes ONLY for the following cars; 217 caboose, 220 searchlight, 514 Ivory boxcar, 514 boxcar and a 517 caboose. The OBs are missing some flaps.



2214

Lionel prewar standard gauge no. 50 dark green 0-4-0 gold rubber-stamped NEW YORK CENTRAL LINES electric loco with thick-rimmed drivers, Super Motor, strap headlight, red window trim and frame edging, brass and nickel trim, circa 1924, C7-8..



2212

Lionel prewar no. 191 illuminated villa with Mojave base, terra cotta walls and dormers, pea green roof and lithographed brick chimney. The entryway has some paint flaking. The villa is C7.



2215

Lionel prewar no. 162 dump truck with an orange frame and peacock dump in a scarce separate sale box. The truck is C8. The box is complete with all flaps that have tape repair. The box shows wear.



2213

Lionel prewar no. 191 illuminated villa with Mojave base, terra cotta walls, pea green roof, dormers and railings and a lithographed brick chimney. The paint is flaking on the entryway. Villa is C7.



2216

Lionel prewar original separate sale box ONLY for a 157 hand truck. The box is missing one interior flap and has some tape repair. Box shows wear.



2217

Lionel prewar standard gauge 112 dark red black rubber-stamped Lake Shore gondola and a 116 maroon gold rubber-stamped N.Y.N.H AND H.R.R. ballast car. The cars are embossed LIONEL MFG. CO. N.Y. on the underside of the frames. The gondola is missing one coupler. The cars are C5.



2218

Lionel prewar standard gauge two no. 116 brown gold rubber-stamped N.Y.N.H. AND H.R.R. ballast cars. The cars are embossed LIONEL MFG. CO. N.Y. on the undersides of the frames. The cars are C6-7



2219

Lionel prewar standard gauge no. 101 bridge set consisting of a no. 104 apple green center span with speckled base and two no. 100 approaches in OB. The approaches have some paint flaking. Bridge set is C7. The box has one interior flap detached. The label is intact. Box shows some wear and has been opened from the bottom.



2220

Lionel prewar standard gauge no. 408E Mojave 0-4-4-0 electric loco with red lettered brass plates, brass, copper and nickel trim. The loco has been rewheeled and both headlights have been replaced. Loco is C6-7.



2221

Lionel prewar standard gauge two no. 61 single lamp posts, versions with small bases and lamp shades, one State Brown and one dark green. The shade is cracked on the State Brown lamp and lamp is C5. The dark green lamp is C6.



2222

Lionel prewar standard gauge no. 100 Electric Rapid Transit trolley, circa 1912-13 with blue body and roof, closed ends that have three projecting end windows, five embossed windows, cream raised roof, clerestory, window section and doors, band under the windows that reads 100 ELECTRIC RAPID TRANSIT 100 and maroon steps and coupler supports. The trolley is embossed LIONEL MFG. CO. N.Y. on the underside of the frame. The trolley is C6.



2223

Lionel prewar standard gauge 1000 non-powered trailer trolley with blue body and roof, closed ends with three projecting window section, five cream embossed windows, doors, raised roof and clerestory. The trolley is gold rubber stamped 1000 Electric Rapid Transit 1000 on both sides. The trolley is missing the three projecting windows on one end of the trolley. The trolley is C3-4.



2224

Lionel prewar standard gauge two no. 61 lamp posts, versions with small bases and lamp shades, one maroon and one dark green. The shades have paint flaking, C6.



2225

Lionel prewar standard gauge no. 392E gunmetal 4-4-2 steam loco with nickel trim in OB that has an original cardboard insert. The loco is C7-8. The box is complete with all flaps.



2226

Lionel prewar standard gauge no. 385W gunmetal die-cast tender with The Lionel Railway Lines black and nickel plates, nickel trim and journals in OB, C7-8.



2227

Lionel prewar standard gauge no. 66 manual double semaphore with black base, orange pole, dark green ladder and black finial. Also included is a no. 61 dark green single lamp post with small base and lamp shade. The accessories are C7.



2228

Lionel prewar standard gauge dark olive green passenger cars with NEW YORK CENTRAL LINES above the windows and rubber-stamped MADE IN U.S.A. THE LIONEL CORPORATION NEW YORK on the underside including; two no. 35 Pullmans and a 36 observation car. The cars are C7.



2229

Lionel prewar standard gauge two no. 67 dark green double lamp posts with small bases and lamp shades, C7.



2230

Lionel prewar standard gauge desirable no. 54 brass 0-4-4-0 electric loco, version with rounded hoods and thick-rimmed wheels, circa 1921-23. The loco has two motors strap headlights, red ventilators and windows and nickel trim, C7-8.



2231

Lionel prewar standard gauge orange passenger cars with maroon doors, black wooden air tanks, NEW YORK CENTRAL LINES above the windows and rubber-stamped MADE IN U.S.A. THE LIONEL CORPORATION NEW YORK on the underside including; 18 Pullman, 19 baggage/Pullman combination car and a 190 observation car. The cars are C7.



2232

Lionel prewar original boxes ONLY for the following accessories; 136 automatic station, two 60 telegraph posts, 62 semaphore, 78 automatic train control. two 85 telegraph post, type K 150-watts transformer, two 81 controlling rheostats and a 166 whistle controller. The boxes are missing some flaps. Please view photo to verify selection and condition.



2233

Lionel prewar standard gauge early original boxes ONLY for the following; two 61 lamp posts and two 76 block signals. The boxes are missing some flaps. Please view photo to verify selection and condition.



2234

Lionel prewar standard gauge no. 18 dark olive green Pullman with large lettering, NEW YORK CENTRAL LINES above the windows, perforated steps, maroon doors and black wooden air tanks in OB. The car is embossed LIONEL MFG. CO. N.Y. on the underside of the frame. The car is C6-7. The OB is complete with all flaps and label is intact.



2235

Lionel prewar standard gauge no. 18 dark olive green Pullman with small lettering, NEW YORK CENTRAL LINES above the windows, three hole steps, maroon doors and black wooden air tanks in OB. The car is embossed LIONEL MFG. CO. N.Y. on the underside of the frame. The car is C7. The OB is complete with all flaps and label is intact.



2238

Lionel prewar standard gauge two no. 217 lighting sets each with three green wooden sockets, nickel clamps and green cloth wire. The sets are C8.



2236

Lionel prewar standard gauge no. 190 dark olive green observation car with NEW YORK CENTRAL LINES above the windows, three hole steps, maroon doors, black wooden air tanks and long observation deck. The car is embossed LIONEL MFG. CO. N.Y. on the underside of the frame. The car is C7. Also included is a 190 OB that has a detached end on the lid but is included and label is intact.



2239

Lionel prewar original boxes ONLY for the following Blue Comet components; 400E Blue Comet steam loco dated 1933, 420 Faye Pullman and a 421 Westphal Pullman. Also included is a 400W Blue Comet tender box ONLY. The boxes are missing some flaps and show wear. All boxes are all marked BLUE. Please view photo to verify selection and condition.



2237

Lionel prewar two original yellow boxes ONLY including; one unmarked and one labeled 271 lighting set which contained a two socket set. The boxes are complete with all flaps. The 271 box has a label intact.



2240

Lionel prewar standard gauge no. 205 set of three dark green merchandise containers complete with original chain in OB. The containers are C7-8. The OB has all flaps on both ends replaced with copied flaps.



2241

Lionel prewar standard gauge freight cars embossed LIONEL MFG. CO. N.Y. on the undersides of the frames including; 112 brown Pennsylvania gondola, 113 green cattle car, 116 brown N.Y.N.H. and H.R.R. ballast and a 117 brown NYC AND HRRR caboose with a black roof. The cars are C6-7.



2244

Lionel prewar standard gauge three no. 61 dark green single lamp posts with small bases and shades. Also included is a 61 Mojave single lamp post with large base and shades. Please view photo to verify selection and condition.



2242

Lionel prewar standard gauge no. 112 red Lake Shore gondola embossed LIONEL MFG. CO. N.Y. on the underside of the frame with a broken coupler that is included, no. 116 gray N.Y.N.H. AND H.R.R. ballast car and a 117 red NYC and HRRR caboose with a black roof and rubber-stamped MADE IN U.S.A. THE LIONEL CORPORATION NEW YORK on the underside of the frame. The cars are C6.



2245

Lionel prewar standard gauge peacock passenger cars with orange inserts and nickel journals including; 332 Railway Mail baggage car, 339 Pullman and a 341 observation car. The roof on the observation car is a different shade than the body. Cars are C7.



2243

Lionel prewar standard gauge four no. 67 dark green double lamp posts with small bases and shades. One of the lamp posts has a detached filigree section which is included. Please view photo to verify selection and condition.



2246

Lionel prewar standard gauge two no. 217 lighting sets each with three green wooden sockets, nickel clamps and green cloth wire. One of the sets is missing a socket. The sets are C6.



2247

Lionel prewar standard gauge original boxes ONLY for the following; 400T BLACK tender, 1835T tender, 384T BLACK X tender and an unmarked shipping box. Also included is an original cardboard insert for a no. 71 telegraph posts with contained six no. 60 posts. The 1835T box is missing one flap. The rest of the boxes are complete. Please view photo to verify selection and condition.



2250

Lionel prewar standard gauge three set boxes ONLY and two set box lids. Some of the boxes have paper work and inserts. All of the boxes and lids are unnumbered, show heavy wear and are damaged. Please view photo to verify selection and condition.

This lot will be sold as is with no returns.



2248

Lionel prewar four lithographed bungalows, three with green roofs and one with red roof, two illuminated and two not lit, C7. Also included is a no. 184 illuminated lithographed bungalow with red enameled roof and green porch roof, C5.



2251

Ives prewar O gauge Interstate Limited passenger set no. 428, circa 1928. The set contains the following; 3254 red 0-4-0 electric loco with brass trim and black die-cast frame, two 137 Parlor cars and a 138 observation car with lighted observation platform. The red cars have black roofs, brass trim and eight-wheel trucks with no journals. The loco frame has some repairs on the underside. The set is C6.



2249

Lionel prewar standard gauge selection of parts and accessories including; 82N semaphore, semaphore with homemade base, 63 double lamp post which is broken, wooden barrels, lockons, instruction sheets and booklets. Please view photo to verify selection and condition.

This lot will be sold as is with no returns.



2252

Ives prewar O gauge no. 32 dark olive green clockwork gold rubber-stamped N.Y.C. and H.R. 0-4-0 electric loco with black cast iron frame, orange window trim and nickel trim. The loco is C6-7.



2253

Ives prewar O gauge orange lithographed passenger cars with brown window and door details including; 130 Buffet and two 129 Saratoga Parlor cars. The roofs had been repainted dark olive green. The bodies are C7-8.



2254

Ives prewar O gauge yellow lithographed passenger set no. 1605, circa 1931 individual OBs. The set contains the following; 257 black 2-4-0 steam loco with brass and copper trim and orange striping, 257T four-wheel Lionel Lines tender with brass trim and nickel journals, 1690 coach and a 1691 observation car. The eight-wheel cars have orange details, brass trim, dark blue roofs and copper journals. The loco and tender are C7-8 and the cars are C7. The boxes are missing some flaps and have tape repair.



2255

Ives prewar O gauge lithographed freight set no. 34, circa 1930 in individual OBs, except for the loco. The set contains the following; 66 black cast iron clockwork 0-4-0 steam loco, 12T four-wheel Ives tender, no. 53 white Pennsylvania Lines merchandise car with black details and red roof. 54 gray gravel car with red details and no. 56 red Pennsylvania Lines caboose with black details, red roof and peacock cupola roof. The four-wheel cars have black frames. The cars and tender are C6. The loco is C7. There is a box flap only for the engine. The boxes are complete with all flaps.



2256

Ives prewar O gauge beige passenger cars with maroon roofs, buff inserts and six wheel trucks with copper journals including; the following; 1696 baggage, 1695 Pullman and a 1697 observation car. There is an OB for the observation car. The 1695 roof has some nicks, otherwise the cars are C7. The OB is complete with all flaps.



2257

Ives prewar O gauge no. 66 orange brown rubber-stamped eight-wheel Standard Oil Co. tank car with black dome. The car is stamped 66 on each end of the tank. Except for a few minor nicks the tank is C8.



2258

Ives prewar O gauge no. 66 orange rubber-stamped eight-wheel Standard Oil Co. tank car with orange dome that has a black cap. The car is C7-8.



2259

Ives prewar O gauge no. 66 gray rubber-stamped eight-wheel Standard Oil Co. tank car with gray dome that has a black cap. The car is stamped 66 on each end of the tank. The car is C7-8.



2262

Ives prewar O gauge lithographed Limited Vestibule Express passenger set. The set contains the following; no 11 black cast iron clockwork 0-4-0 steam loco with three nickel bands, two arch windows, six spoke wheels and black number plates, no. 11 L.V.E. four-wheel tender with red spring details and cross hatching on the frame, no. 60 cream baggage car with red details, 61 white Empress chair car with red details and a 62 cream Princess Parlor car with brown details. The four-wheel passenger cars have dark green frames and green roofs. The Empress car is C6-7. The rest of the set is C7.



2260

Ives prewar O gauge lithographed Limited Vestibule Express passenger set no. 12 in a damaged set box with original cardboard inserts, circa 1911. The set contains the following; no. 17 black cast iron clockwork 0-4-0 steam loco with three boiler bands two arched windows and six spoke wheels, no, 11 L.V.E. four-wheel tender with red details and dark green frame, no. 60 baggage car, 61 Yale coach, four straight track sections, eight curve track sections and track clips. The eight-wheel passenger cars are blue with yellow and brown details, gray and green roof, dark green frames and T-trucks. The gray section on the roof of the baggage car has been repainted otherwise the set is C7-8.



2263

Ives prewar O gauge no. 63 four-wheel lithographed butterscotch gravel car with vertical striping, circa 1904-06. The car has red lithographed spring detail on the frame. The car is C7.



2261

Ives prewar O gauge no. 62 eight-wheel, harder to find, light blue lithographed Limited Vestibule Express Harvard Parlor car with yellow details, gray roof, red raised roof section, dark green frame and T-trucks, C7.



2264

Ives prewar O gauge no. 25 black cast iron clockwork 4-4-0 steam loco with four boiler bands, three cab windows trimmed in gold, six spoke wheels with no side rods and red and gold trim on cab roof and a no. 25 L.V.E. lithographed four-wheel tender with red details and red spring details on the frame, circa 1906-09. The loco and tender are C7.



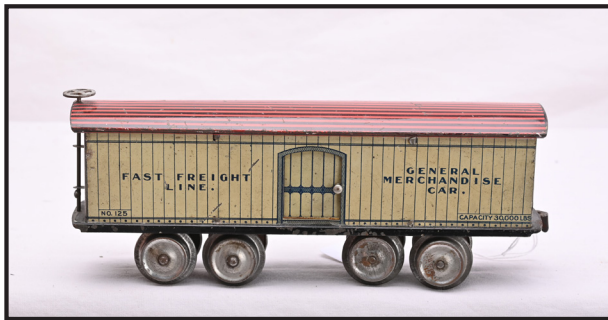
2265

Ives prewar O gauge no. 128 lithographed blue gravel car with blue details and eight-wheel inboard trucks, circa 1904-09, C5.



2268

Ives prewar O gauge no. 126 four-wheel lithographed Fast Freight caboose, circa 1904-06 with one original matching door and one yellow door, blue/gray striped body and cupola, gothic arch topped windows, red and black striped roof and red lithographed spring detail on the frame. The caboose is C6.



2266

Ives prewar O gauge no. 125 buff and blue lithographed Fast Freight Line Merchandise car with red and black lithographed striping on the roof and eight-wheel inboard trucks, circa 1904-1909. The car is C6.



2269

Ives prewar O gauge orange eight-wheel passenger cars with black roofs, brass plates, vestibules, trim and journals including; two 141 Parlor cars and a 142 observation car. The cars have paint touch up and are C6.



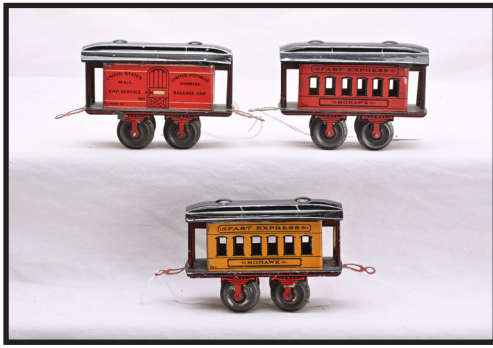
2267

Ives prewar O gauge no. 127 gray lithographed live stock car with blue lettering, red and black lithographed striped roof and eight-wheel inboard trucks, circa 1904-09. The car is C4-5.



2270

Ives prewar O gauge no. 3 black tin lithographed clockwork 2-2-0 steam loco, 2nd series, with IMC logo under the cab windows, circa 1903-04 with a no. 1 four-wheel black and red lithographed F.E. tender with red lithographed spring details, cross hatched floor on the front of the tender. The loco has some repairs on the underside and is C5. The tender is C6-7.



2271

Ives prewar O gauge four-wheel lithographed passenger cars with black roofs, lithographed vestibules and red spring details on the black frame, circa 1903 including; no. 50 red Limited Vestibule Express baggage car, a no. 51 yellow/orange Mohawk chair car with a no. 1 on lower left side of the car and FAST EXPRESS above the windows and a no. 51 red Mohawk chair car with a no.1 on lower left side of the car and Fast Express above the windows. The cars are C6-7.



2274

Ives prewar O gauge no. 25 black cast iron clockwork 4-4-0 steam loco with two boiler bands, two arch windows, gold and red details on the cab roof, black plates with red and gold details, ten spoke wheels and rivet details on the boiler and a no. 25 lithographed Limited Vestibule Express eight-wheel tender, circa 1916-17. The loco is the version with two cab windows outlined in silver. The loco and tender are C6-7.



2272

Ives prewar O gauge no. 3254 orange 0-4-0 electric loco with a black cast iron frame and gold trim. The engine has paint flaking and is C6.



2275

Ives prewar O gauge uncataloged Syndicate Special no. 2 Cadet Blue passenger set, circa 1930. The set contains the following; 3260 electric 0-4-0 loco with black die-cast frame, black inserts and brass trim, two 552 Parlor cars and a 558 observation car. The eight-wheel passenger cars are yellow and green lithographed with gold details, Cadet Blue roofs and brass journals. The set has a couple of minor nicks and is C8.



2273

Ives prewar O gauge orange eight-wheel passenger cars with black roofs, brass plates, trim and journals including; two no. 133 Parlor cars and a 134 observation car. The cars are C7.



2276

Ives prewar O gauge hard to find no. 54 four-wheel red hand painted gravel car, circa 1903-04 with black striping on the sides, solid frame with red lithographed spring detail and tin wheels. The car has paint flaking, C4-5.



2277

Ives prewar O gauge no. 54 four-wheel lithographed cherry red and black gravel car with harder to find horizontal striping, olive trim on the bottom and top edges and red lithographed spring detail on frame, circa 1904-05. The car is missing a coupler. The car is C5.



2280

Ives prewar O gauge no. 25 black cast iron clockwork 4-4-0 steam loco with gold and red trim, three windows trimmed in gold and four boiler bands and a no. 11 red and black lithographed L.V.E. four-wheel tender with cross hatching on the floor and red and black spring details on the frame, circa 1904-06. The loco and tender are C7.



2278

Ives prewar O gauge no. 11 black cast iron clockwork 0-4-0 steam loco with four boiler bands and one rectangular window with red stripe underneath and a no. 11 four-wheel lithographed L.V.E. tender with red details, cross hatching on the front of the tender floor and red spring details on the frame. circa 1906. The loco and tender are C7-8.



2281

Ives prewar O gauge cream lithographed passenger cars with gold and black details, black roofs with silver clerestories that have red striping, LIMITED VESTIBULE EXPRESS above the windows and eight-wheel inboard trucks, circa 1904-06 including; 130 Buffet car with New York Baggage by door and a 129 Philadelphia parlor car. The car roofs are C5 and the bodies are C6.



2279

Ives prewar O gauge two lithographed iridescent gold four-wheel no. 51 Brooklyn Chair Cars lettered LIMITED VESTIBULE EXPRESS above the windows with black roofs, hook couplers, red and black details and red spring details on the frames, circa 1910, The cars are C6.



2282

Ives prewar O gauge scarce pale green Dixie Flyer passenger set no. 487R, circa 1929. The set contains the following; 3257R electric 0-4-0 loco with brass trim, two 141 Parlor cars and a 142 observation car. The cars have brass plates, stairs and journals. The engine has some paint touch up. The set is C7-8.



2283

Ives prewar O gauge no. 51 iridescent gold four-wheel no. 51 Brooklyn Chair Car lettered LIMITED VESTIBULE EXPRESS with red and black details, green roof and gray frame. The car is C7 but the roof is C5.



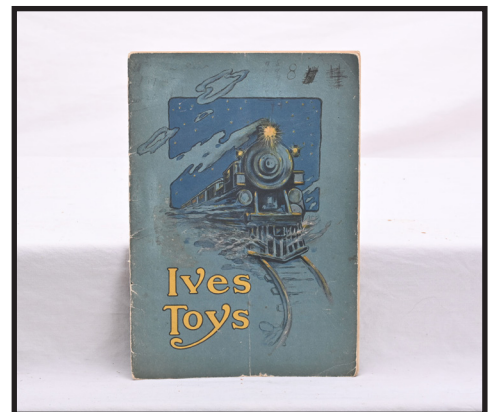
2286

Ives prewar O gauge 805 non-powered green Suburban trolley trailer with yellow, red and blue details, gray roof with red raised roof section and lithographed frame. The trolley is numbered 810 and lettered SUBURBAN. The roof has been repainted. The rest of the trolley is C7.



2284

Ives prewar O gauge no. 51 iridescent white four-wheel no. 51 Brooklyn Chair Car lettered LIMITED VESTIBULE EXPRESS with red and gold details, green roof and black frame. The car is C6.



2287

Ives prewar original color consumer catalog from 1911 with 24 pages. The catalog is complete and shows wear.



2285

Ives prewar O gauge no. 810 electric trolley set, circa 1910 with set box bottom only. The set contains the following; 810 green lithographed Suburban trolley with yellow, red and blue details, buff roof with red raised roof section and lithographed frame, terminal trolley pole, nine trolley poles, thirteen overhead wires, track clips, controller, two straight track sections and eight curve track sections. The trolley body is C7. The roof has some paint flaking and is C6.



2288

Ives prewar O gauge no. 20 black cast iron clockwork 0-4-0 steam loco with lithographed number plates, two cab windows, three boiler bands, rivet detail on boiler and gold and red trim, circa 1910-13 and a no. 25 eight-wheel lithographed LIMITED VESTIBULE EXPRESS with cream details. The loco is C7 and the tender is C6.



2289

Ives prewar O gauge no. 3200 black cast iron 0-4-0 electric loco with raised lettering, red and gold trim. The roof has been repainted. The rest of the loco is C7.



2292

Ives prewar O gauge dark blue lithographed Limited Vestibule Express four-wheel passenger cars with cross hatched floors, cross hatched frames that have spring details, gold details, black roofs with silver clerestories that have red vertical striping, circa 1906-08 including; 60 baggage car with cream door and a 61 Empress chair car. The cars are C6-7.



2290

Ives prewar O gauge Seagraves red and black passenger set no. 486, circa 1929 in individual OBs and set box. The set contains the following; 1122 black die-cast 4-4-2 steam loco with brass and copper trim and instruction sheet, 25 The Ives Railway Lines tender with brass trim and journals and cardboard wrap, two 135 Parlor cars, 136 observation car, two boxes of 4-OC3 curve track sections, with one box empty, two boxes of 4-OS3 straight track sections, kit box with some track clips and rheostat. The red passenger cars have black roofs, brass trim, plates and journals. The set is C7. The individual OBs have most flaps attached. The set box has one repaired corner.



2293

Ives prewar O gauge no. 61 four-wheel cream Limited Vestibule Express Empress chair car with brown details cross hatched frame with red spring details, red and black steps, black roof with silver clerestories that have red vertical striping. The car has paint flaking and is C5.



2291

Ives prewar O gauge no. 89 water tank with black tower and ladder, orange tank and original spout. The tower is C7.



2294

Ives prewar O gauge 1125 black cast iron 4-4-0 steam loco with two windows, three boiler bands, rivet detail on the boiler, red and gold trim a 25T eight-wheel lithographed Limited Vestibule Express tender, circa 1914-16. The loco has been repainted otherwise it is C6 and the tender is C5.



2295

Ives prewar O gauge The Patriot passenger set no. 574, circa 1930 in individual OBs and set box. The set contains the following; 3255 blue 0-4-0 electric loco with red frame and brass trim, two 135 Parlor cars and a 136 observation car. The eight-wheel cars are blue with red roofs and trucks, brass trim, plates and journals. The engine has paint flaking and is C6. The two 135 cars are C6-7. The 136 car has paint flaking and is C6. The loco box has an original cardboard wrap. The individual OBs have some detached flaps and show wear. The set box has split corners and shows wear.



2298

Ives prewar O gauge 3253 orange 0-4-0 electric loco with a black cast iron frames, maroon window trim, brass and nickel trim, C6.



2299

Ives prewar O gauge eight-wheel orange lithographed passenger cars with brown and red details and brass journals including; two 129 Saratoga Parlor car and a 130 Buffet car. The roofs have been repainted and the car bodies are C6-7.



2296

Ives prewar O gauge four-wheel lithographed cars with; no. 60 cream baggage car with red and gold details, dark blue doors, black roof with silver clerestories that have red vertical stripes, black frame with red spring details and red and black steps and a 62 dark blue Princess parlor car with gold details, black roof with silver clerestories that have red vertical stripes, black frame with red spring details and red and black steps. The cars are C6.



2300

Ives prewar O gauge lithographed passenger set no. 20R, circa 1908-09 in set box with three original cardboard dividers. The set contains the following; no. 25 black cast iron clockwork 4-4-0 steam loco with key, four boiler bands, three gold windows trimmed in gold, smooth boiler, red and gold trim, 25T L.V.E. four-wheel black and red tender with red spring detail and cross hatched floor and frame and a no. 130 green eight-wheel New York Buffet car with Limited Vestibule Express above the windows, gold details black roof and silver clerestory with red striping. The set is C7. The set box lid has four split corners. Labels are mostly intact. Included with this set is a ribbon from the T.T.O.S. National Convention 1979 Niagara Falls, N.Y. awarding this set 2nd place for best original Prewar O Gauge set.



2297

Ives prewar O gauge no. 60 four-wheel red lithographed baggage car with black and gold details, red roof with silver clerestory that has red vertical stripes, dark blue and gold door, black and red steps and red spring detail. The car is C5.



2301

Ives prewar O gauge 562 four-wheel red caboose with peacock windows and cupola roof and brass trim. The caboose is C6.



2304

Ives prewar O gauge no. 11 black cast iron clockwork 2-2-0 steam loco with four boiler bands, smooth boiler, one window and red stripe below the window, circa 1903-04 and a no. 1 four-wheel red and black lithographed F.E. tender, C6.



2302

Ives prewar O gauge no. 20 black cast iron clockwork 0-4-0 steam loco with red plate that has white lettering, six spoke drivers, two windows, smooth boiler and three boiler bands and a no. 11 four-wheel red and black lithographed L.V.E. fender with cross hatching and red spring details on the frame, circa 1908-09. The loco and tender are C7.



2305

Ives prewar O gauge no. 51 four-wheel red lithographed Hiawatha coach with LIMITED VESTIBULE EXPRESS above the windows, black details and roofs with silver clerestory details, lithographed vestibules including the floor and red and black spring details on the frame. The car is C6.



2303

Ives prewar O gauge 115 lithographed freight station with wood plank walls, cream base floor, lithographed single plate on each side, raised platform and ramp, diamond patterned red roof and doors and a cast iron chimney top, circa 1908-09. The station is C6.



2306

Ives prewar O gauge no. 51 four-wheel yellow lithographed Hiawatha coach with LIMITED VESTIBULE EXPRESS above the windows, black details and roofs with silver clerestory details, lithographed vestibules including the floor and red and black spring details on the frame. The car roof is C6 and the body is C7.



2307

Ives prewar O gauge no. 51 four-wheel red lithographed Iroquois coach with LIMITED VESTIBULE EXPRESS above the windows, black details and roofs with silver clerestory details, lithographed vestibules including the floor, gold striping along the bottom of the body on the frame and red and black spring details on the black frame. The car is missing both couplers and is C6.



2310

Ives prewar O gauge no. 3238 black cast iron 2-4-2 New York Central Lines electric loco with raised letters, red, gold and brass trim, circa 1911. The loco and tender are C8.



2308

Ives prewar O gauge no. 51 four-wheel red lithographed Iroquois coach with LIMITED VESTIBULE EXPRESS above the windows, black details and roofs with silver clerestory details, lithographed vestibules including the floor and red and black spring details on the maroon frame. The car is missing one coupler and is C6.



2311

Ives prewar O gauge no. 131 red lithographed baggage car with LIMITED VESTIBULE EXPRESS above the doors, dark green doors, yellow-orange details, gray roof with raised green roof section, gray frame and T-trucks, circa 1911. The roof edge has some nicks, otherwise the car is C8.



2309

Ives prewar O gauge no. 121 red caboose with gray cupola roof, brass trim and journals. The car has a 3211 American Flyer body, The car is C5.



2312

Ives prewar O gauge no. 130 red lithographed Buffet car with LIMITED VESTIBULE EXPRESS above the windows, dark green doors, yellow-orange details, gray roof with raised red roof section, gray frame and T-trucks, circa 1911. The car has a couple of nicks on the roof edge and is C8.



2313

Ives prewar O gauge no. 129 red lithographed Saratoga car with LIMITED VESTIBULE EXPRESS above the windows, dark green doors, yellow-orange details, dark gray roof with raised red roof section, gray frame and T-trucks, circa 1911. The car is C8,



2316

Ives prewar O gauge no. 64 white lithographed Union Line Pennsylvania Lines merchandise car with red and gray details, white lithographed roof with red catwalk and eight-wheel T-trucks, C7-8.



2314

Ives prewar O gauge no. 20 black cast iron clockwork 0-4-0 steam loco with black plate that has white lettering, six spoke drivers, two windows, smooth boiler and three boiler bands and a no. 11 four-wheel red and black lithographed L.V.E. fender with cross hatching and red spring details on the frame, circa 1908-09. The tender is missing a coupler. The loco and tender are C6.



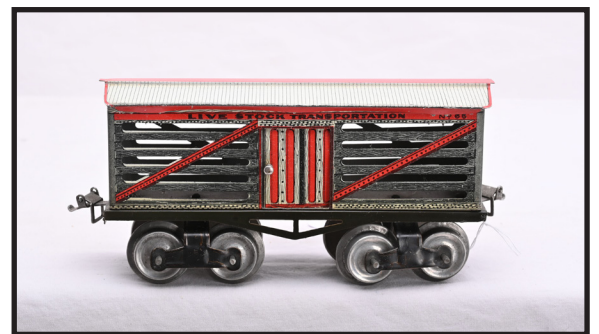
2317

Ives prewar O gauge no. 64 off-white lithographed Union Line Pennsylvania Lines merchandise car with orange and gray details, white lithographed roof with orange catwalk and eight-wheel T-trucks, C6.



2315

Ives prewar O gauge four-wheel lithographed Limited Vestibule Express passenger cars with dark green frames including; no. 60 white baggage with with red details, one yellow door and one green door and gray roof and a no. 61 red Empress coach with black details and dark green roof. The baggage is C6 and the Empress coach is C7.



2318

Ives prewar O gauge no. 65 gray lithographed Live Stock Transportation car with red and white details, white lithographed roof with red catwalk and eight-wheel T-trucks, C7-8.



2319

Ives prewar O gauge no. 67 white lithographed Pennsylvania caboose with black and red details, green roof, red cupola roof and eight-wheel T-trucks, C7.



2322

Ives prewar O gauge no. 25 black cast iron clockwork 4-4-0 steam loco with four boiler bands, three cab windows trimmed in gold, six spoke wheels with no side rods and red and gold trim on cab roof and a no. 11 lithographed red and black four-wheel tender with red spring details on the frame and cross hatching on floor, circa 1906-09. The tender is missing the coupler. The loco and tender are C7.



2320

Ives prewar O gauge pea green passenger set no. HC 2 Special in individual OBs and set box. The set contains the following; 257 black steam 2-4-0 loco with brass and copper trim and orange striping, 257T four-wheel Ives Lines tender with brass trim, orange striping and nickel journals, 610 Pullman, 612 observation car, lockon, empty box only for a 75-watts transformer, empty no. 1921 12 V light bulbs box and track clips. The cars have THE IVES LINES decals above the windows, orange inserts and nickel journals. The set is C7-8. The individual OBs are missing some flaps. The loco box has an original cardboard insert. The set box has four split corners.



2323

Ives prewar O gauge four-wheel no. 51 lithographed yellow/orange Mohawk chair car with a no. 1 on lower left side of the car, FAST EXPRESS above the windows, black roof, lithographed vestibules and spring details on the frame. The car is missing both couplers. The roof has been repainted. The car is C6.



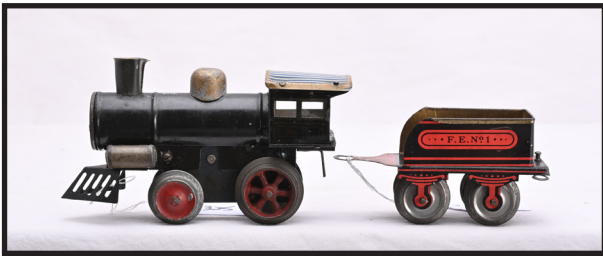
2321

Ives prewar O gauge red lithographed four-wheel freight cars with dark green frames including; two no. 53 Pennsylvania Lines boxcars with green roof, 54 gravel car with black details, 55 Live Stock Transportation car with white roof and a no. 56 Pennsylvania caboose with green cupola roof. The cars are C7.



2324

Ives prewar O gauge four-wheel no. 51 lithographed red Mohawk chair car with a no. 1 on lower left side of the car, FAST EXPRESS above the windows, black roof with silver striping, lithographed vestibules and spring details on the frame. The roof is C5 and the body is C7.



2325

Ives prewar O gauge no. 2 black tin clockwork 2-2-0 steam loco with blue and white lithographed cab roof, circa 1905 and a four-wheel red and black lithographed F.E. no. 1 tender with cross hatching on the floor of the front section and spring details on the frame. The loco is C6 and the tender is C7.



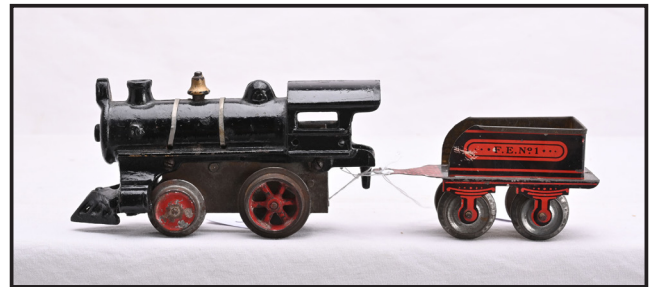
2328

Ives prewar O gauge no. 51 four-wheel yellow lithographed Iroquois chair car with a black and white details, LIMITED VESTIBULE EXPRESS above the windows, black roof with silver details on the clerestory, red and black striped vestibules, cross hatch frame with red spring details. The car is C6.



2326

Ives prewar O gauge four-wheel no. 50 red lithographed Limited Vestibule Express baggage car with black details, dark blue painted vestibules, cream and black painted vestibule floors, black roof, silver detail on the clerestory and red spring details on the frame. The car is C7.



2329

Ives prewar O gauge black cast iron clockwork 2-2-0 steam loco with two boiler bands with a four-wheel red and black lithographed no. 1 F.E. tender with cross hatching on the tender floor and spring details on the frame. The loco is missing the number plate and could be a no. 0, 1 or 2. The tender is missing a coupler. The loco and tender are C6.



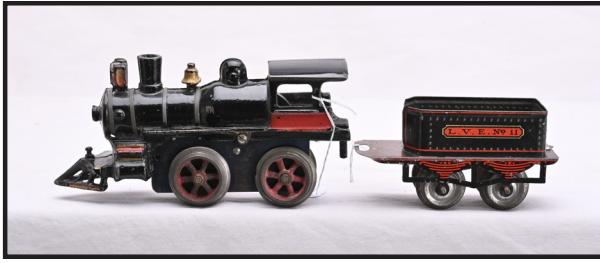
2327

Ives prewar O gauge four-wheel no. 51 beige lithographed Iroquois chair car with brown details, LIMITED VESTIBULE EXPRESS above the windows, version with yellow painted vestibule ends, cream and black striped vestibule floor, black roof with silver details and red spring details on the frame with cross hatching. The car is C6-7.



2330

Ives prewar floor toy lithographed freight set containing the following; no. 17 cast iron black steam loco and a four-wheel L.V.E. no. 11 red and black tender, two no. 163 gray gravel cars and a 126 red Fast Freight caboose with cream roof, dark blue and cream cupola. The set is C6-7.



2331

Ives prewar O gauge no. 11 black cast iron clockwork 0-4-0 steam loco with four boiler bands and one rectangular window with red stripe underneath and a no. 11 four-wheel lithographed L.V.E. tender with red details, cross hatching on the front of the tender floor and red spring details on the frame. circa 1906. The loco and tender are C6-7.



2334

Ives prewar O gauge no. 60 white lithographed baggage car with red doors, red and black details, LIMITED VESTIBULE EXPRESS above the doors, green frame, eight-wheel T-trucks, gray roof and red raised roof section. The car roof is C5 and the body is C6.



2332

Ives prewar O gauge four-wheel red and black lithographed no. 1 F.E. tender with red spring details on the frame, C7.



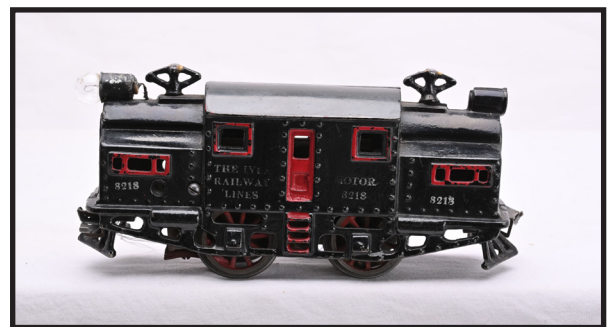
2335

Ives prewar O gauge two white lithographed passenger cars with red and black details, gray roofs, white raised roof sections and eight-wheel T-trucks including; 61 Yale chair car and a 62 Harvard Parlor car. The roofs are C5 and the bodies are C6.



2333

Ives prewar O gauge no. 20 black cast iron clockwork 0-4-0 steam loco with red plate that has white lettering, six spoke drivers, two windows, smooth boiler and three boiler bands and a no. 11 four-wheel red and black lithographed L.V.E. tender with cross hatching and red spring details on the frame, circa 1908-09. Loco and tender are C6-7.



2336

Ives prewar O gauge no. 3218 black 0-4-0 cast iron silver rubber-stamped electric loco with red trim and doors. The top of the hoods have been repainted, otherwise the rest of the loco is C6-7.



2337

Ives prewar O gauge original set box ONLY with two labels and original dividers. The labels are not matched. The set box lid has one end which has been replaced and has tape repair. The set number is worn off.



2340

Ives prewar wide gauge dark olive green passenger set no. 701 in set box with original cardboard dividers. The set contains the following; 3242 gold rubber-stamped 0-4-0 electric loco with black cast iron frame, maroon window trim and nickel trim, 184 Club, 185 Parlor car, a 186 observation car, eight curve track sections, four straight track sections, rheostat and track clips with kit box. The set is C7. The label is intact on the set box.



2338

Ives prewar O gauge three original boxes ONLY; two for 258 black locos and one unnumbered. One of the 258 boxes has an original cardboard insert. The boxes are worn and missing flaps.



2341

Ives prewar no 600 single lamp post with gray cast iron square base and white pole, C7.



2339

Ives prewar no. 601 double lamp post with a dark green square cast iron base and ivory pole, C6-7,



2342

Ives prewar wide gauge orange passenger set no. 704, circa 1925-27 in set box with original cardboard dividers. The set contains the following; 3243 electric 4-4-4 loco with black cast iron frame, red window frames, brass plates and trim, 180 Buffet car, 181 Parlor and 182 observation car. The cars are rubber-stamped and have brass journals. The loco is C6-7. The cars have some minor paint touch up, paint flaking and are C6. The set box is damaged.



2343

Ives prewar 332 automatic bell signal with green cast iron square base, ivory pole and cross buck with black lettering, C6.



2346

Ives prewar wide gauge 192 olive green Santa Fe merchandise car with maroon roof, black trim and brass journals, circa 1926-27. The car is C6.



2344

Ives prewar wide gauge 1134 black die-cast 4-4-2 steam loco with headlight in the center of the boiler front and brass trim, circa 1930 and a no. 40 The Ives Railway Lines tender with brass plates, trim and journals. The loco and tender are partially restored.



2347

Ives prewar wide gauge no. 195 red gold rubber-stamped cabooses with brown roof and cupola, black window trim and brass journals, C6-7.



2345

Ives prewar wide gauge no. 190 orange/yellow rubber-stamped Texas Oil tank car with black dome and brass journals in OB. The car is C6.



2348

Ives prewar wide gauge light green The New Yorker passenger set no. 701 with scarce Southern Pacific Lines plates, circa 1927. This set contains the following; 3242 electric 0-4-0 loco with brass Southern Pacific Lines plates and trim, 184 Club car, 185 Parlor car and a 186 observation car with a Southern Lark Pacific drumhead. The cars have brass plates and journals and SOUTHERN PACIFIC LINES plates above the windows. The set is C5.



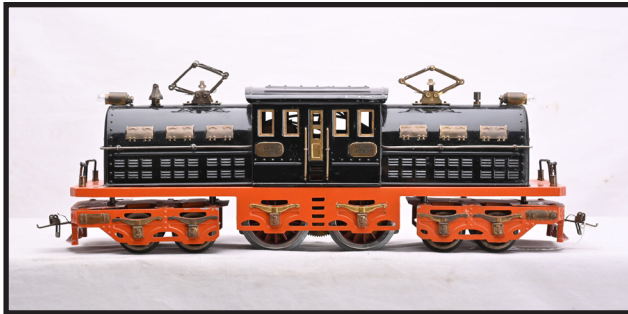
2349

Ives prewar two no. 600 olive green die-cast single lamp posts with fluted sides on the bases, C6.



2352

Ives prewar wide gauge uncataloged Cavendish Special loco and tender, circa 1930 consisting of a no. 1132 black cast iron 4-4-0 steam loco and a no. 40 die-cast The Ives Railway Lines tender with brass trim and journals. The loco and tender are C7.



2350

Ives prewar wide gauge 3245R black 4-4-4 electric loco version with a long cab, orange frame, brass plates and trim. This loco is from the The Olympian passenger set no. 1078, circa 1930. The loco has been rewheeled. The center cab roof does have some minor paint touch up and the frame has been restored. The black cab is C6-7. This loco is pictures in the Antique Toy Trains book by Howard Godel on page 162 and was from the Herb Morley collection.



2353

Ives prewar wide gauge no 3243 maroon 4-4-4 electric gold rubber-stamped N.Y.C. and H.R. loco with a cast iron frame and nickel trim. The loco has been restored.



2351

Ives prewar wide gauge 334 crossing gate with orange/green shack that has a speckled roof. The crossing gate is a Lionel production and has a maroon base, nickel mechanism cover and pea green gate. The accessory has some paint flaking and is C6.



2354

Ives prewar wide gauge red gold rubber-stamped passenger cars including; 187 Buffet car, 188 Parlor car and a 189 observation car. The cars have N.Y.C. and H.R. above the doors. The cars are C7.



2355

Ives prewar wide gauge unusual no. 1134 red die-cast 4-4-2 steam loco with overhead headlight on top of the gold boiler, brass trim and plates and gold striping, circa 1929 and a no. 40 red die-cast The Ives Railway Lines tender with brass trim, plates and journals and gold striping. The headlight mounting is broken. The loco has been rewheeled. It is believed that the red 1134 loco with the hooded headlight in center of the boiler front was only manufactured in 1930. Ives most likely used left over casting from 1929 with the overhead headlight to produce this red 1134. The loco and tender has heavy paint flaking, C4-5.



2358

Ives prewar wide gauge desirable no. 249 observation car from the 1079R National Limited passenger set, circa 1930. The cars are blue with red roof, yellow window trim, gold decals above and below the windows, red trucks, brass air tanks and brass journals. The car is C5.



2359

Ives prewar wide gauge unusual no. 3236 black 0-4-0 electric loco with black cast iron frame, brass trim and plates and gold windows, circa 1927. The engine is C6-7.



2356

Ives prewar wide gauge desirable no. 248 Pullman from the 1079R National Limited passenger set, circa 1930. The cars are blue with red roof, yellow window trim, gold decals above and below the windows, red trucks, brass air tanks and brass journals, C5.



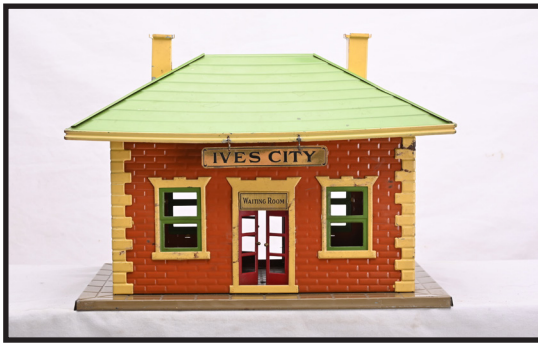
2360

Ives prewar wide gauge dark green Transcontinental passenger set no. 703, circa 1926. This set contains the following 3237 electric 0-4-0 loco with brass plates and trim, two 187 Club cars and a 189 observation car. The cars have brass trim, plates and journals. The loco is C7 and the cars are C6.



2357

Ives prewar wide gauge desirable no. 248 Pullman from the 1079R National Limited passenger set, circa 1930. The cars are blue with red roof, yellow window trim, gold decals above and below the windows, red trucks, brass air tanks and brass journals. The roof has heavy paint flaking and is C4. The rest of the car is C5.



2361

Ives prewar wide gauge 1873 Ives City station, circa 1932 with Mojave base, terra cotta walls, cream cornices, window and door frames and chimneys and pea green roof. The station has brass Ives City plates and is modeled after a Lionel 122 station. The station is C6-7.



2362

Ives prewar wide gauge orange Night Hawk passenger set no. 1016, circa 1928 in set box that has original cardboard inserts. The set contains the following; 3242 electric New York Central 0-4-0 loco with brass plates and trim, 184 club car, 185 Parlor car, 186 observation car, rheostat, lockon, eight curve track sections and two straight track sections. The cars have brass plates, trim and journals. The engine has been rewheeled. The Club car has paint loss on one end of the roof. The rest of the set is C6-7. The set box has one damaged corner.



2363

Ives prewar wide gauge no. 301 double arm manual lighted semaphore with a red cast iron base, black pole and finial and brass ladder in OB. The semaphore measures 15-inches tall and is C6-7. The box is worn and label is mostly intact.



2364

Ives prewar wide gauge 3245 St. Paul type light green 4-4-4 electric loco, version with short cab, cast iron frame and brass trim. The loco is C6-7.



2365

Ives prewar wide gauge blue passenger cars with brass trim, plates and journals including; 187 Club car, 188 Pullman and a 189 observation car. The cars have some paint flaking and are C6.



2366

Ives prewar wide gauge 1134 black die-cast 4-4-2 steam loco with and elevated separate headlight, brass trim and copper trim, circa 1928-29 and a no. 40 die-cast The Ives Railway Lines tender with brass plates, trim and journals. The cowcatcher is broken off of the front of the engine but included, otherwise is C6. The tender has a slight warp and is C6-7.



2367

Ives prewar wide gauge Black Diamond passenger cars, circa 1928 from the Black Diamond passenger set no. 1062. The cars have hinged roofs and trucks and brass plates, battery boxes, air tanks, window inserts and journals including; 241 Club car, two 242 Parlor cars and a 243 observation car. The cars are C6. There are original boxes for both of the 242 Parlor cars and the 243 observation car. The OBs show some wear.



2370

Ives prewar wide gauge 123 glass dome double station outfit consisting of two 116 lithographed stations and 121 glass dome, circa early 1920s. The glass dome rests on six wooden posts which are mounted on the bases of the stations. The 116 stations have orange roofs with a single chimney and are marked Union Station on the dormers. The lithographed walls have a protruding rectangular front bay. The bases are tan. The glass dome has eight panels. The station is C7-8.



2368

Ives prewar wide gauge unusual no. 3243R New York Central Lines black 4-4-4 electric loco with a cast iron frame. This engine has a 3242R brass plate on one side and 3243R brass plate on the other side. It is believed that Ives ran out of 3243R plates and used the 3242R plates instead. The engine is the version with no brass doors and has brass trim. The wheels on the loco are disintegrated. The loco is C6.



2371

Ives prewar wide gauge 1770E black 2-4-2 steam loco with orange striping, brass and copper trim, circa 1932. Also included is a 1760T Ives Railway Lines tender with brass and copper trim, green striping and copper journals. The loco and tender were Lionel Irvington production using a Lionel 390E loco body and a Lionel 390T tender body and Lionel 500-series trucks. The loco has been rewheeled. The loco and tender are C7-8.



2369

Ives prewar wide gauge light green passenger cars with brass trim, plates, air tanks and journals including; 187 Club Car, 188 Parlor car and a 189 observation car. The Club car is C7-8. The other two cars are C6-7.



2372

Ives prewar wide gauge Lionel Irvington production 1771 dark green lumber car, circa 1931-32 with nickel stakes, brass brake wheels and copper journals. This car used a Lionel 511 flatcar body and 500-series trucks. The car is C7.



2373

Ives prewar wide gauge Lionel Irvington production 1772 peacock gondola, circa 1931-32 with brass trim and copper journals in a worn OB. This car used a Lionel 512 gondola body and 500-series trucks. The car is C7. The box has no end flaps.



2376

Ives prewar wide gauge Lionel Irvington production 1775 ivory tank car, circa 1931-32 with brass trim and copper journals. This car used a Lionel 515 tank car body and 500-series trucks. The car is C7-8.



2374

Ives prewar wide gauge Lionel Irvington production 1773 orange cattle car, circa 1931-32 with pea green roof and door guides, brass trim and copper journals. This car used a Lionel 513 cattle car body and 500-series trucks. The car is C7-8.



2377

Ives prewar wide gauge Irvington production 1776 red coal car, circa 1931-32 with brass plates and trim and nickel journals in OB with no end flaps. This car used a Lionel 516 hopper bodies and 500-series trucks. The car is C7-8.



2375

Ives prewar wide gauge 1774 boxcar, circa 1931-32. The boxcar is cream with orange roof and door guides, brass trim and copper journals. This car used a Lionel 514 boxcar car body and 500-series trucks. The boxcar has one broken coupler. The car is C7.



2378

Ives prewar wide gauge Lionel Irvington production 1778 ivory refrigerator car, circa 1931-32 with peacock roof, brass trim and copper journals. This car used a Lionel 514R refrigerator car body and 500-series trucks. The car is C7-8.



2379

Ives prewar wide gauge Lionel Irvington production 1777 pea green caboose, circa 1931-32 with red roof, brass trim and copper journals. This car used a Lionel 517 caboose car body and 500-series trucks. The car is C7-8.



2380

Ives prewar wide gauge Lionel Irvington production no. 10 peacock electric loco, circa 1931-32 with brass trim and black lettered brass plates. This loco has a Lionel body, black frame and latch couplers. The loco has been rewheeled. The paint and trim on this loco is very clean. The loco has a few minor nicks and is C7-8.



2381

Ives prewar wide gauge The Cardinal passenger set no. 1084R, circa 1929 in individual OBs and set box. The set contains the following; 3242R black New York Central Lines electric 0-4-0 loco with red frame and brass trim, 184 Club car, two 185 Parlor cars, 186 observation car, kit box, rheostat, instruction booklet, two curve track boxes ONLY and eight straight track sections with two straight track boxes. The red passenger cars have black roofs and trucks, brass trim and journals. The loco is double boxed. The die-cast ends of the loco are chipped on all four corners. The loco body is C7-8. The car bodies are C6-7. The car boxes have three original cardboard wraps and four trays. The car boxes have all flaps attached with some tape repair. The loco boxes are missing all flaps. The set box has two split corners on the lid.



2382

Ives prewar wide gauge original boxes ONLY for the following 3242R black New York Central Lines electric 0-4-0 loco, double boxed, 184 Club car, two 185 Parlor cars, 186 observation car. These boxes are for the cars from The Cardinal passenger set no. 1084R, circa 1929. The OBs are missing flaps.



2383

Ives prewar wide gauge scarce and desirable light green Interstate Limited passenger set no. 1050R, circa 1928. The set contains the following; 3245R electric 4-4-4 loco with short cab and brass trim and plates, 241 Club car, 242 Parlor car and a 243 observation car. The cars are transition passenger cars which use American Flyer bodies with IVES trucks and snake pull couplers. The cars have all brass plates, trim, air tanks, battery boxes and journals. The engine has paint flaking and is C5. The cars have heavy paint touch up.



2384

Ives prewar wide gauge no. 300 manual lighted single arm semaphore with maroon cast iron base, black pole and finial and dark green ladder in OB. Also included is an original box for Light for locomotive or street lamp, The semaphore is C6. The box is split on two corners of the lid and label is intact.



2385

Ives prewar wide gauge 1134R olive green cast iron President Washington 4-4-0 steam loco with engineer in the window and nickel trim and a no. 40 eight-wheel stamped steel gold rubber-stamped B and O R.R. tender with brass journals, circa 1927. The loco has been rewheeled. The loco is C7 and the tender is C6.



2388

Ives prewar wide gauge dark olive green passenger set no. 702, circa 1921-23 in set box with original cardboard dividers. The set contains the following; 3242 silver rubber-stamped N.Y.C and H.R. electric loco with red window trim, nickel trim and black cast iron frame, 187 Buffet car and a 189 observation car. The cars are gold rubber-stamped N.Y.C. and H.R. above the doors and THE IVES RAILWAY LINES above the windows. The loco is very clean and has a couple of minor nicks. Engine is C7-8. The Buffet car has paint flaking on the roof and is C5. The car body is C7. The observation car is C7-8. The set box has heavy tape repair. The bottom and lid of the set box do not match in size. The label is mostly intact but is upside down.



2386

Ives prewar wide gauge original set box ONLY with original cardboard dividers. The set number is worn off. The box is from the early 1920s. The label is partially intact. The box has no split corners. Also included is an original box for a station that is damaged and has heavy tape repair. Please view photo to verify condition.



2389

Selection of USA Trains standard gauge modern era track including; six curve and eight straight sections, C8.



2387

Ives prewar wide gauge scarce no. 3243R maroon 4-4-4 electric loco with black cast iron frame, brass trim and plates, C5.



2390

American Flyer prewar O gauge 3/16 scale freight set containing the following; 561 black die-cast 4-6-2 Pennsylvania K5 steam loco, 558 Pennsylvania die-cast tender with nickel journals, 476 light green gondola, 480 yellow-orange Shell tank car, 481 crane with red base and cab roof, cream cab and green boom and a 484L red caboos with a broken coupler in OB. The freight cars have nickel journals. The caboos is C6-7 and the set is C7. The caboos box has most flaps attached.



2391

American Flyer prewar O gauge 3/16 scale red passenger set no. 4011, circa 1940 in individual OBs. The set contains the following; 561 black Pennsylvania K-5 die-cast 4-6-2 steam loco, 558 Pennsylvania die-cast tender, 494R baggage car and two 495R Pullmans. The wheels on the loco are starting to disintegrate. The tender has a slight warp but is intact. Loco and tender are C6. The eight-wheel tender and cars have nickel journals. The cars are C6-7. The boxes are missing some flaps.



2394

American Flyer prewar O gauge four-wheel lithographed orange passenger cars with green roofs, black frames, green and gold details including; 1107 Jefferson coach and a 1147 observation car. The cars have AMERICAN FLYER LINES above the windows. The cars are C7-8.



2392

American Flyer prewar O gauge 3/16 scale no. 472 automatic Army unloading car with ToostieToy U.S. Army Armored vehicle and one straight track section in OB with two original cardboard inserts and paper wrap. The car is C7. The box is complete with all flaps and label is intact. Also included is a 488 aluminum searchlight car with red sub-base with a broken searchlight head which is included.



2395

American Flyer prewar O gauge 916 loco/tender combination, circa 1932-34 consisting of a 915 black cast iron 0-4-0 steam loco with two windows on each side of the cab trimmed in orange and a 119 four-wheel red/gold/green lithographed tender with non-operating light. The loco is C6-7 and the tender is C6.



2393

American Flyer prewar O gauge lithographed passenger set containing a no. M1 black cast iron clockwork 0-4-0 steam loco with a green band under the cab windows, key and two wide boiler bands, no. 328 four-wheel black and orange tender and a no. 102 green Chicago coach version with four windows, two-riser steps, black roof and frame and orange and gold details. The set is C6.



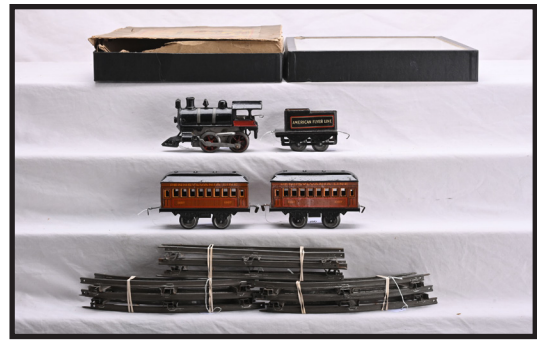
2396

American Flyer prewar O gauge scarce eight-wheel red lithographed Chicago coach with black, gold and white details, dark red roof and black frame. The cars have five windows and T-trucks. The roof has been repainted. The car body is C6-7.



2397

American Flyer prewar O gauge scarce eight-wheel red lithographed Chicago coach with black, gold and white details, dark red roof and black frame. The cars have five windows and T-trucks. The roof has been repainted. There is one coupler missing. The car body is C6-7.



2400

American Flyer prewar O gauge scarce brown wood sided lithographed passenger set in damaged set box, circa 1916. The set contains the following; M1 black cast iron clockwork 0-4-0 steam loco with key, single windows that have red bands underneath and two wide boiler bands, four-wheel no. 120 black red and white lithographed AFL tender and two no. 1107 four-wheel coaches with PENNSYLVANIA LINES above the windows, black frames and roofs, orange, red and black details. Also included are eight curve track sections and four straight track sections. The set is C6-7. The set box lid is missing all sides. The box is damaged.



2398

American Flyer prewar O gauge eight-wheel lithographed freight cars including; 1112 yellow-orange Canadian Pacific Railway boxcar with black roof, 1115 green Southern Pacific boxcar with black roof and two 1116 sand cars one green and one red. The cars are C6.



2401

American Flyer prewar O gauge four-wheel lithographed freight cars including; 1141 log car with load, 1115 yellow/orange automobile car with green roof and doors and a 1111 Illinois Central brown wood sided caboose with orange, black and white details and black roof. The cars are C7.



2399

American Flyer prewar O gauge no. 3045 eight-wheel wrecking car with gray trucks and brass journals. This car was available for separate sale only. The cast iron hoist parts were made by the Arcade Company. The car is C5.



2402

American Flyer prewar O gauge no. 12 black cast iron clockwork 0-4-0 steam loco with single cab windows, green bands under the cab windows, two wide boiler bands and a four-wheel no. 328 black and orange lithographed tender. The loco and tender are C5.



2403

American Flyer prewar O gauge no. 102 four-wheel dark blue Chicago coach with red and gold details, four punched windows on each side, black roof and frames and two-riser steps. The car is C6-7.



2406

Edmonds-Metzel Mfg. Co. for American Flyer prewar O gauge no. 328 four-wheel black and yellow lithographed tender with dark blue frame. The tender is C5.



2404

American Flyer prewar O gauge no. 102 four-wheel dark blue Chicago coach with red and gold details, four punched windows on each side, black roof and frames and two-riser steps. The car is missing both couplers. The car is C6.



2407

Edmonds-Metzel Mfg. Co. for American Flyer prewar O gauge four-wheel brown lithographed Chicago coach with black and gold details, three punched windows and doors on each side, black roof and frame. The car is C5.



2405

Scarce and desirable Edmonds-Metzel Mfg. Co. for American Flyer prewar O gauge clockwork lithographed passenger train. This set contains the following; no. 2 black cast iron clockwork 0-4-0 steam loco with four thin boiler bands, single window with green band under the window, four-wheel no. 328 green and orange tender and a four-wheel red Chicago coach with red, gold and black details, three punched windows on each side and doors, black roof and frame and three riser steps. The set is C5-6.



2408

American Flyer prewar O gauge two original set boxes ONLY with no set numbers. The smaller box has original cardboard inserts. The bigger box has two side pieces missing. The labels are intact on the smaller box and mostly intact on the larger box.



2409

American Flyer prewar O gauge two original set boxes ONLY. One of the boxes is stamped 0 and has original cardboard inserts. The other box has no set number and has one repaired corner. The labels on the boxes are intact.



2412

American Flyer prewar O gauge four-wheel lithographed freight cars with black frames including; 1109 dark green Illinois Central Railroad sand car, 1109 gray E.J. and E. Chicago Outer Belt Line sand car with black and white details and a 1111 red I.C.R.R. caboose with yellow/orange and white details and green roof. The cars are C7-8.



2410

American Flyer prewar O gauge Nation Wide Lines red lithographed passenger set made for J. C. Penney Co., circa 1931. The set contains the following; Type XVII black cast iron 0-4-0 steam loco with a type II 120-style Nation Wide Lines four-wheel lithographed tender, United States Mail Railway Post Office baggage car with blue doors, coach and observation car missing the railing. The red four-wheel cars have yellow and white details, black roofs and frames and NATION WIDE LINES above the windows. The loco and observation car are C6-7. The rest of the set is C7.



2413

American Flyer prewar O gauge clockwork passenger set. The set contains the following; no. 0 black cast iron clockwork 0-4-0 steam loco with one window on each cab side that has a green band underneath, two wide boiler bands, 328 four-wheel black and orange tender and a four-wheel yellow lithographed tender with brown, black and orange details, three riser steps, four punched windows and doors, black roof and frames. The set is C6-7.



2411

American Flyer prewar O gauge four-wheel lithographed freight cars with black frames including; 1141 flatcar with wood load, 1109 gray E.J. and E. Chicago Outer Belt Line sand car with black and white details and an 1111 red I.C.R.R. caboose with yellow and white details and green roof. The cars are C7-8.



2414

American Flyer prewar O gauge no. 0 black cast iron clockwork 0-4-0 steam loco with wide gold boiler band, missing one band, one window with green band beneath and gold painted details, circa 1910-14 and a 328 four-wheel black and yellow tender and a no. 121 black cast iron clockwork 0-4-0 steam loco, circa 1917-18 and a no. 121 four-wheel black and cream tender. Also included is a Hafner black cast iron clockwork 0-4-0 steam loco with red band under the cab windows. The 121 tender is C7 and the rest of the items are C5.



2415

American Flyer prewar O gauge clockwork track including; eight curve track sections and six straight track sections, early three rail track with silver ties including; eight curve sections and two straight sections, track clips and three rail track with black ties including; four curve track sections and seven straight track sections. Also included are two no. 1048 25-watts transformers in damaged boxes and a 1249 50-watts transformer. Please view photo to verify selection and condition.



2416

American Flyer prewar O gauge 4680 loco/tender combination consisting of the a 1680 black die-cast 2-6-4 steam Hudson loco with white striping and red cab windows, circa 1938 and a 1623 twelve-wheel AFL cast aluminum tender. The loco and tender are C7.



2417

American Flyer prewar O gauge chrome streamlined AFL passenger cars with gray roofs and vestibules, circa 1938-39 including; three 1621-6C coaches and 1622-6C observation car with two original boxes. The cars are C7. The boxes are damaged.



2418

American Flyer prewar O gauge yellow and brown AFL streamlined passenger cars including; two 1621-6Y coaches and a 1622-6Y observation car all in OBs, C7. The boxes have most flaps attached.



2419

American Flyer prewar O gauge four-rail track mounted on fiber board including; two straight track sections and nine curve track sections. The track is C7-8.



2420

American Flyer prewar O gauge 3307 black 2-4-2 steam loco with brass and copper trim, green striping. Also included are two no. 3199 eight-wheel AFL tenders with brass trim, gray trucks and brass journals. One of the tenders is missing two hand rails and is C6. The engine and the other tender are C7.



2421

American Flyer prewar O gauge original set box ONLY for freight set no. 1716 which contained the following; 1689 steam loco, boxcar, tank, Bordens milk car and a caboose. The label is intact. Also included are two damaged set boxes ONLY with no numbers



2423

American Flyer prewar O gauge selection of original boxes ONLY including 492G auto mail pick up, 484L caboose, 614 loco, 7715 loco, 430 and 435 tenders and additional boxes with no numbers. Please view photo to verify selection and condition.



2422

American Flyer prewar O gauge original boxes ONLY for the following accessories; three 610 bumper boxes, 2218 automatic block signal with instruction sheet, 2029 automatic remote control whistle unit and one 2206 crossing signal. The boxes are complete with all flaps.



2424

American Flyer prewar wide gauge selection of original boxes ONLY including; 4390 Club Car stamped R.BLUE X, 4678 loco, 4032 crossing gate, 2032 or 4032 crossing gate and an unmarked box. Please view photo to verify selection and condition.

STOUT AUCTIONS

Toy & Train Specialists



The Jerry Poch
Train Collection
Session 10



Stout Auctions
2884 Mercer-West Middlesex Rd
West Middlesex, PA 16159
(724) 528-1500
katy@stoutauctions.com