



The Jerry Poch Train Collection

Session 9
Prewar American Trains

November 22nd, 2025

Stout Auctions of West Middlesex, PA is honored to present session nine of the All Time Greatest Auction Series of quality, rare and diverse trains from the incredible Jerry Poch collection.



Please plan to attend this outstanding sale or join online at www.stoutauctions.com.

The sale will begin at 10AM ET.

Stout Auctions
2884 Mercer-West Middlesex Rd
West Middlesex, PA 16159
(724) 528-1500
katy@stoutauctions.com





2001

Lionel prewar O gauge two no. 56 pea green lamp posts in OBs, C8. One box is missing all flaps on one end and the other box is missing a tuck flap.



2004

Lionel prewar O gauge two 156 station platforms in OBs with original cardboard inserts. The platforms are C7-8. One box is missing two end flaps, otherwise boxes are complete.



2002

Lionel prewar O gauge four-wheel freight cars including; 901 gray Lake Shore gondola, 800 orange Penn R.R. boxcar numbered 4862, 802 pea green Union Stock Lines stock car and an 801 maroon Wabash R.R. caboose numbered 4890 with a black roof. The cars are C7.



2005

Lionel prewar O gauge orange passenger set no. 134, circa 1931 in individual OBs and set box. The set contains the following; 252 electric 0-4-0 loco with terra cotta frame, brass and copper trim, two 603 Pullmans and 604 observation car. The passenger cars have terra cotta roofs, cream inserts and copper journals. The set is C7-8. The individual OBs are missing flaps with some detached flaps which are included. The individual OBs have heavy wear. The set box lid has three split corners and has both labels intact.



2003

Lionel prewar O gauge no. 251E red 0-4-0 electric loco with ivory inserts, red lettered brass plates, brass and nickel trim. The engine is missing a headlight. The loco is C7-8.



2006

Lionel prewar O gauge 1684 scarce gunmetal 2-4-2 steam loco with a 1689T Lionel Lines tender with nickel trim and journals. The loco and tender are C7-8.



2007

Lionel prewar O gauge two-tone red passenger set no. 146W, circa 1939-40. This set contains a 225E black die-cast 2-6-2 steam loco, 2245W Lionel Lines tender with nickel trim and journals, 2602 baggage, 2600 Pullman, 2601 observation car with an aluminum railing on the observation deck. The cars have ivory inserts, nickel trim and journals. The loco and tender are C8. The paint on the cars is very clean with a few minor nicks, C7-8.



2008

Lionel prewar O gauge no. 152 dark olive green rubber-stamped New York Central Lines 0-4-0 electric loco with red window trim and nickel trim in OB. Except for a couple of minor nicks the engine is C8. The box is missing all flaps but one end flap.



2009

Lionel prewar O gauge no. 56 copper lamp post. This lamp post came on the 922 lamp terrace, C7-8.



2010

Lionel prewar O gauge semi-scale freight set no. 251B, circa 1940 in individual OBs and set box. The set contains the following; 227 black steam 0-6-0 switcher, 2227B Pennsylvania slope-back tender, 2954 Pennsylvania boxcar, 2955 black Shell tank, a 2957 NYC caboose and an instruction booklet. The cars have high rise simulated knuckle couplers. The set is C8. There are five original coupler rings included. The loco and tender box are complete with all flaps. The car boxes have original cardboard inserts and most all flaps attached with some tape repair. The set box is complete with all flaps. The label is skinned in the middle and set number is missing.



2011

Lionel prewar O gauge 254 olive green 0-4-0 electric loco with black lettered brass plates, red inserts and striping along the bottom edge of the body, brass and nickel trim. The engine has been rewheeled. The engine C8.



2012

Lionel prewar O gauge terra cotta/yellow-orange passenger set including; 248 terra cotta 0-4-0 electric loco with cream inserts, brass and nickel trim, 603 Pullman with nickel journals and 604 observation car with copper journals. The eight-wheel yellow-orange cars have terra cotta roofs and cream inserts. The set is C7-8. The cars are in worn OBs.



2013

Lionel prewar O gauge two no. 603 yellow-orange Pullman cars with cream inserts, terra cotta roofs and nickel trim in OBs, C7-8. The boxes are missing some flaps.



2014

Lionel prewar O gauge freight set no. 275W, circa 1937 individual OBs and set box. The set contains the following: 263E gunmetal steam loco, 263W tender, 812 45N green gondola with four wooden barrels, 814 yellow boxcar with brown roof and door guides, an 817 red caboose, a 66 whistle controller and instruction booklet. The set has all nickel trim and journals. The set is C7-8. The individual OBs are missing some flaps. The set box is complete with one split corner. The label is fully intact.



2015

Lionel prewar O gauge two no. 93 water tanks, one with red base, aluminum tower and tank and black spout and one with maroon base, terra cotta tower, pea green tank and brass spout with one OB that is complete with all flaps. Also included is a 137 Lioneltown station with mustard base, ivory walls, cream window and door inserts, green door and window frames, red windows and nickel plates. The red and aluminum water tank are C7. The other tank and station are C6.



2016

Lionel prewar O gauge Silver Streak passenger set no. 279E, circa 1935. The set contains the following: 265E black Commodore Vanderbilt 2-4-2 steam locomotive with brass L plate on the front of the boiler front, 261TX tender with nickel journals, 619 Pullman-baggage, vestibule and 618 observation car. The locomotive and tender are black with nickel trim and tender has brass Lionel Lines plates. The die cast cab on the loco is original, solid, and intact which is difficult to find. The X on the 261TX tender designates the special draw bar that is only found with this set. The two passenger cars and vestibule are chrome and have a bright and shiny finish. The loco and tender are C7-8 and the cars are C8. Also included with this set is a 617 chrome coach with a vestibule, C8.



2017

Lionel prewar O gauge outfit no. 901 consisting of a 231 black steam 0-6-0 PRR B-6 switcher with a 2231T Pennsylvania slope-back tender with nickel journals, circa 1939, C8.



2018

Lionel prewar O gauge passenger set no., 234E, circa 1934 in individual OBs and set box. The set contains the following: 259 black steam loco with nickel trim and brass L plates under the cab windows, 262T Lionel Lines tender with brass and nickel trim and copper journals, 602 baggage car, 600 Pullman, a 601 observation car and an instruction booklet. The passenger cars are gray with red roofs, ivory inserts and copper journals. Except for a couple of minor nicks, the set is C8. The individual OBs are missing some flaps and show wear. The set box is complete with all flaps and label is intact.



2019

Lionel prewar O gauge two 270 red girder bridges, one version with harder to find yellow decal lettered LIONEL and one dark red with a nickel Lionel plate in OBs. The bridges are C7-8. One box is complete with all flaps and the other box is missing three flaps on one end.



2020

Lionel prewar O gauge scarce gray Macy Special passenger set no. 267, circa 1929-30 in individual OBs and set box. The set contains the following; no. 4 Bild-A-Loce engine with apple green hatches, black lettered brass plates, brass and nickel trim and missing one coupler, two 605 Pullmans and a 606 observation car with a brass Macy Special drumhead. The gray cars have maroon inserts, apple green clerestories and nickel journals. The cars have NEW YORK CENTRAL LINES above the windows. This is a clean matched original set with some nicks, C7-8. The engine box is marked 4 GRAY and has all flaps attached. The car boxes are missing all interior flaps with tape repair on the end flaps. The set box lid has two split corners and both labels are intact.



2021

Lionel prewar O gauge 071 telegraph post set containing six 060 telegraph posts in yellow OB with original cardboard insert with graphics. The posts are orange with black bases, red cross arms, white insulators and brass finials, C7-8. The box is complete with no split corners and label is intact. The graphics on the insert are bright and clean.



2022

Lionel prewar O gauge two no. 600 four-wheel dark green Pullmans cars with NEW YORK CENTRAL LINES above the windows. One of the Pullmans is missing a coupler. The cars are C6.



2023

Lionel prewar O gauge dark green passenger set no. 166, circa 1920-23 in set box with original cardboard dividers and paper wrap. The set contains the following; 156 electric rubber-stamped New York Central Lines 4-4-4 electric loco with red windows and nickel trim, two 610 Pullmans, 612 observation car, 88 rheostat in individual OB, four curve track sections, six straight track sections, box of track clips, instruction sheet and booklet and an original wooden box for a no. 30 14-Volts light bulb and wires. The cars have NEW YORK CENTRAL LINES above the windows and no journals. The Pullmans have maroon inserts and the observation car has wood grain inserts. The set is C7. The set box is damaged, but both labels are intact.



2024

Lionel prewar O gauge two no. 54 pea green double lamp posts. One of the lamp posts is C7 and one is a C7-8.



2025

Lionel prewar O gauge two no. 54 State brown double lamp posts, C7.



2026

Lionel prewar O gauge four-wheel freight cars with brass trim, latch couplers and copper journals including; two 902 apple green gondolas with two wooden barrels each, 803 peacock hopper, 805 pea green boxcar with orange roof and door guides, 806 orange stock car with maroon roof and door guides and two 809 orange dump cars. The cars are C7-8.



2027

Lionel prewar O gauge 256 orange 0-4-4 electric loco with black lettered brass plates, pea green windows, brass and nickel trim in OB. The cowcatchers have some paint loss, otherwise the loco is C8. The box is complete with all flaps and label is intact. The box has some staining.



2028

Lionel prewar O gauge freight set no. 243, circa 1940 in individual car OBs and set box. The set contains the following; 228 black 0-6-0 switcher, 2228T Pennsylvania slope-back tender with black journals, 3814 Tuscan rubber-stamped merchandise car with five red Baby Ruth cubes, 2815 orange Shell tank car and a 2817 rubber-stamped red caboose with Tuscan roof. The freight cars have black journals except for the Sunoco tank which has nickel trim and journals. The set has high-rise simulated knuckle couples except for the tank car. The loco and tender are C8. The cars are C7-8. The loco and tender boxes have all flaps attached. The car boxes have most flaps attached with tape repair. The set box is complete with all flap with tape repair. The label is intact.



2029

Lionel prewar O gauge 1689E gunmetal 2-4-2 steam loco with a very rare 1588T four-wheel gunmetal Lionel Lines tender both with all nickel trim. The loco and tender are C7.



2030

Lionel prewar O gauge red passenger set Special no. 20, circa 1934 in individual OBs and set box. The set contains the following; 258 black 2-4-0 steam loco with orange striping, brass and copper trim, 259T four-wheel Lionel Lines tender with brass trim and copper journals, two 603 Pullmans and a 604 observation car. The eight-wheel red cars have cream inserts, black roofs and copper journals. The set is C7-8. The loco box is complete with all flaps. The tender box and car boxes have most all flaps attached. The set box has been opened from the bottom and is sealed on the top. The box is complete and label is fully intact.



2031

Lionel prewar O gauge very rare no. 816 white rubber-stamped black hopper with high-rise simulated knuckle couplers with truck positioned near the ends of the car, black trim and journals. The hopper is missing both brake wheels and is C7. Very few of these cars are known to exist and most are the 2816 version.



2032

Lionel prewar O gauge two-tone green passenger set no. 236, circa 1931 in individual OBs and set box. The set contains the following; 262 black 2-4-2 steam loco with brass and copper trim, 262T Lionel Lines tender with brass and copper trim and copper journals, two 607 Pullmans, a 608 observation car and a 81 rheostat. The cars have cream inserts and copper journals. The loco and tender are C7 and the cars are C7-8. The loco box has an original cardboard insert. The loco box has replaced end flaps. The other boxes are missing some flaps. The set box has no split corners and both labels are intact.



2033

Lionel prewar O gauge 763E gunmetal die-cast Hudson 4-6-4 steam loco with a desirable 2226WX gray die-cast rubber-stamped Lionel Lines coal pile tender with black journals, circa 1940 in OBs. The engine and tender do not have much run time and are C8. The loco box is missing all flaps on one end and label is intact on the other end. Tender box is correctly stamped GM and is missing three flaps on one end. This is a very high quality example of a Hudson and coal pile tender.



2034

Lionel prewar O gauge freight set no. 179E, circa 1933 in individual OBs with some original paper wrap and set box. The set contains the following; 252E terra cotta 0-4-0 electric loco with black frame, black E on the doors, brass and nickel trim and cream striping along the frame edge, 804 silver Sunoco tank with copper side domes, 831 dark green log car with load, nickel stakes and brake wheel supports, an 807 red caboose with peacock windows and roof and instruction booklet. The four-wheel cars have brass trim and copper journals. The set is C8. The individual boxes have most all flaps attached. The set box has been opened from the bottom. The top of the box is sealed and is complete with all flaps. The label is intact. This is a very clean matched original set.



2035

Lionel prewar O gauge very scarce 262 black 2-4-2 steam loco with orange striping, brass and copper trim and a 262T black crackle Lionel Lines tender with brass and copper trim, copper journals and orange striping in OBs. The loco cowcatcher has been replaced otherwise the loco and tender are C7. The loco box has an original cardboard insert and one reproduction end flap. The tender box is missing one interior flap and one coupler flap.



2036

Lionel prewar O gauge scarce and unusual promotional Sears freight set no. 7125C, circa 1940-41 in individual OBs and set box. The set contains the following; 204 black 2-4-2 steam loco, 2689WX Lionel Lines tender, 2652 yellow gondola, 2660 crane with nickel plate, cream crane, red roof and olive green boom, 3659 red dump car with a 160 unusual gray speckled bin and a 207 bag for artificial coal, 2657X red caboose with cream windows, individual box with connecting ties and lockon, 167 whistle controller with instruction sheet and an instruction booklet. The tender and freight cars have automatic box couplers with black journals. The set is C7-8. The individual OBs have most flaps attached. The set box is complete with a very faded label which is intact.



2037

Lionel prewar O gauge four-wheel freight cars with no journals including; two 804 Lionel Tank Lines tank cars, one light gray and one dark gray and an 803 dark green hopper. The gray tanks are C7 and the hopper is C7-8. Also included is an four-wheel 804 dark gray Pennsylvania tank car that has been restored.



2040

Lionel prewar O gauge freight cars with nickel trim and journals including; 2813 cream cattle car with maroon roof and door guides, 2814 cream boxcar with maroon roof and door guides and a 2815 orange Shell tank car. The 2813 and 2815 are C7-8. The boxcar is C7. There are damaged boxes that are missing flaps for the 2813 and 2814 cars.



2038

Lionel prewar O gauge scarce no. 213 outfit original box that contains a 203 olive drab Armored car with eight curve track sections, circa 1917-18. The car is C6. The OB is damaged. The label is mostly intact and number is clearly shown.



2041

Lionel prewar O gauge two no. 59 harder to find red lamp posts, both in OBs, C7. The boxes are both missing end flaps on one end.



2039

Lionel prewar O gauge two no. 702 gray supply cars from set no. 215, circa 1920-21. The cars are C5.



2042

Lionel prewar O gauge Sears red passenger set no. 5155 in individual OBs and set box containing; 259E black 2-4-2 steam loco with brass L plates under the cab windows and nickel trim, 261T Lionel Lines tender with brass plates, nickel trim and journals, two 629X Pullmans, 630X observation, Aladdin U 50-watt transformer that has the cord cut off, lockon and instruction booklet. The eight wheel cars have cream inserts and nickel journals. The passenger car roofs have a couple of minor nicks, otherwise the set is C8. Also included is an extra 629 red Pullman with cream inserts and nickel trim, C8. The loco OB box is complete with all flaps. The tender and car OBs have all exterior flaps attached and are missing coupler flaps. The passenger car boxes are all stamped with an X after the number. The set box has been opened from the bottom and is complete with all flaps. The label has damage. This is an unusual Sears Department Store Special set.



2043

Lionel prewar O gauge very scarce variation of the 814R refrigerator car with black lettered nickel plates. The car has a white body and doors, brown roof, black frame, journals, ladders and brake wheels. The trucks are 1940 style manual high rise simulated knuckle couplers. The trucks are positioned towards the ends of the frame. One brake wheel is missing. The car is C7-8.



2044

Lionel prewar O gauge very scarce 816 black hopper with black lettered nickel plates, black trim, high rise simulated knuckle couplers and black journals, circa 1941. The hopper has paint touch up, otherwise the hopper is C6.



2045

Lionel prewar O gauge three no. 58 single lamp posts, two cream and one maroon. The lamp post are C6-7. Also included are six OBs, three early boxes and three late boxes.



2046

Lionel prewar O gauge 226E black 2-6-4 steam loco, scarce version with nickel Lionel Lines plates under the cab windows with no number, circa 1941 and a 2226WX die-cast twelve-wheel Lionel Lines tender with black journals and high rise simulated knuckle couplers, C8.



2047

Lionel prewar O gauge two-tone green passenger cars with high rise simulated knuckle couplers, cream inserts and black journals including; 2615 baggage, 2613 Pullmans and a 2614 observation car with a green observation deck railing. The cars are C7-8.



2048

Lionel prewar O gauge red passenger set no. 6517E, circa 1936-37 in individual OBs and set box. The set contains the following; 262E black steam 2-4-2 loco with brass plates under the cab windows and nickel trim, 265W Lionel Lines tender with nickel journals, two 610 Pullmans and a 612 observation car. The passenger cars have aluminum roofs and window inserts and nickel journals. The set is C7-8. The individual OBs have most all flaps attached. The set box is complete with all flaps and label is intact. The box shows wear.



2049

Lionel prewar O gauge three no. 59 lamp posts, one dark green, one pea green and one olive green, C7-8. Also included is an OB. the box is missing one end flap.



2050

Lionel prewar O gauge peacock passenger set no. 296, circa 1926-27 with set box lid only. The set contains the following; 252 electric loco with brass and nickel trim, two 607 Pullmans and a 608 observation car. The cars have orange inserts and nickel journals. The set box lid is damaged but labels are intact. The set is C8.



2051

Lionel prewar O gauge very scarce and unusual 2263W satin black twelve-wheel tender with nickel L plates, nickel trim and journals. The tender is C8.



2052

Lionel prewar O gauge Lionel Jr. scarce promotional Union Pacific colors yellow/brown streamline passenger set no. 5214, circa 1935 in individual OBs and set box. The set contains the following; 1700 power car with a brass L on the front of the car, two 1701 coaches, 1702 observation car and instruction sheet. The cars have nickel plates and journals. The set is C7. The individual OBs are stamped with a Y on both ends, and have most flaps attached. The set box is stamped YELLOW on the label which is fully intact. The top four flaps have tape repair.



2053

Lionel prewar O gauge outfit no. 900B consisting of a 230 PRR B-6 0-6-0 switcher in OB and with a 2230B Pennsylvania slope-back tender, circa 1939. The loco and tender are C8. The OB is split on one side but is complete with all flaps.



2054

Lionel prewar O gauge lithographed freight cars with nickel journals and latch couplers; 1677 light blue gondola and 1680 aluminum Sunoco tank car in worn OB missing all flaps. Also included is a 2682 lithographed red cabooses with black journals and high rise simulated knuckle couplers. Cars are C7.



2055

Lionel prewar O gauge one of a kind prototype eight-wheel freight cars from the Louis Hertz collection including; light green gondola with an 820 underframe and observation railing for the sides which was never produced, 820 maroon Illinois Central boxcar numbered 65784, two 820 Union Pacific boxcars numbered 65784, one gold and one Mojave and an 822 orange New York Central Lines caboose with black roof. The cars have no journals. These exact cars are referenced in the book Collecting Model Trains by Louis H. Hertz on page 214. Please view photo to verify condition of the freight cars.



2056

Lionel prewar O gauge brown passenger set no. 254, circa 1942 in individual OBs and set box. The set contains the following; 229 black 2-4-2 steam loco, 2666T Lionel Lines tender with black journals, two 2642 Pullmans, 2643 observation car with gray observation deck railing and a box of connecting ties. The brown cars have gray inserts and black journals. One side rod crank screw is broke on the loco. The set is C8. The loco and tender boxes have original cardboard inserts. The loco box is a 1664 box that has been over stamped 229. The individual OBs have most all flaps attached. The set box is complete with faded label in intact.



2057

Lionel prewar O gauge four-wheel freight cars with black journals, latch couplers and nickel trim including; 831 45N green lumber car with load, 809 green dump car, two 804 orange Shell tank cars and 807 red caboose with cream windows. The cars are C7-8. All of the cars are in OBs except for one of the 804 Shell tank cars. The boxes have tape repair.



2058

Lionel prewar O gauge desirable two-tone red Sears Roebuck promotional passenger set no. 186WX with Sears no. 59-79P, circa 1940 in individual OBs and set box. The set contains a 238 black 4-4-2 Torpedo Pennsylvania steam loco, 2265W Lionel Lines tender with nickel trim and black journals, 2602 baggage, 2600 Pullman, 2601 observation car and a 167 whistle controller. The two-tone red passenger cars with ivory inserts and high rise simulated knuckle couplers. The cars are different from the cataloged version and have black journals, no steps and no coupler support slots. The set is C7-8. The individual OBs are missing some flaps. The set box is complete with all flaps and the label is intact. The Sears label showing the number is partially intact.



2059

Lionel prewar O gauge two no. 53 lamp posts, one silver and one white, C7-8.



2060

Lionel prewar O gauge orange passenger set no. 267, circa 1929-30 in individual OBs. The set contained the following; 4 Bild-A-LoCo 0-4-0 electric loco with black lettered brass plates, brass and nickel trim, two 605 Pullmans and a 606 observation car. The cars have cream inserts, apple green doors and copper journals. The loco has weight added. The set is C7-8. The engine box is missing two flaps. The car boxes are missing all flaps except for one 605 box which has flaps on one end.



2061

Lionel prewar O gauge very scarce 2812X burnt orange gondola with nickel four nickel plates that read Lionel Lines, black journals and low rise simulated couplers. The gondola is C6. The OB is missing end flaps.



2062

Lionel prewar O gauge Outfit No. 1520E Quackenbush Hardware passenger, circa 1935 in set box containing; 262 steam locomotive, 262T tender, two 610 Pullman cars, and 612 observation car. Loco and tender are black with copper and brass trim. Passenger cars are terra cotta with maroon roofs, cream trim, and copper journals. Loco and cars are C7 and the tender is C6. The set box has four split corners on the lid, both labels are intact and the set number is worn off. The reference guides indicate that this set has shown up with a 261E set number.



2063

Lionel prewar O gauge scarce version of a 2817 caboose with red body, nickel plates, white window inserts, Tuscan roof, red enameled observation railings, black frame and journals with high rise simulated couplers. The caboose body and roof are C8 and the frame is C6-7.



2064

Lionel prewar O gauge very scarce and unusual Snellenburg Special passenger set in set box. The set contains; 253 dark green electric loco with yellow inserts, brass trim, red lettered brass plates and copper journals, two 607 Pullman cars and 608 observation. The cars are peacock with orange inserts, nickel journals and brass observation deck. Loco is C6-7. The cars C7. The set box has split corners with tape repair and is worn.



2065

Lionel prewar O gauge two no. 53 white lamp posts, C7.



2066

Lionel prewar O gauge freight cars with nickel trim and journals including; 2811 silver flatcar with wood load, 2815 silver Sunoco tank car and a 2820 searchlight car with a 45N green base. The cars are C7-8.



2067

Lionel prewar O gauge 225E gunmetal steam loco and 2225TX sheet metal waffle top Lionel Lines tender with black journals. The loco and tender are C8. The tender is in an OB with most flaps attached.



2068

Lionel prewar O gauge unusual Sears freight set no. 8125, circa 1942 in individual OBs and set box. This set contains the following; 229 black 2-4-2 steam loco, 2666TS Lionel Lines tender, 2812 45N green green gondola with four barrels, 2815 yellow/orange Shell tank, 3814 Tuscan rubber stamped merchandise car with five red Baby Ruth cubes and a 160 bin, 2817 flat red caboose with a Tuscan roof and white window inserts, RCS remote control track set and instruction sheets. The gondola and tank have nickel trim and journals. The merchandise car and caboose are rubber-stamped and have black journals. There are two broken side rod screw cranks on the loco. This set has a few minor nicks, otherwise is C7-8. The loco and tender OBs have original cardboard inserts. The individual OBs are complete with all flaps. The set box is complete with all flaps but is split down one side. The label is intact.



2069

Lionel prewar O gauge 227 black 0-6-0 steam switcher, later version with no number stamped on boiler front and a 2227B Pennsylvania slope-back tender. The loco and tender have high rise simulated knuckle couplers. Loco and tender are C7-8.



2070

Lionel prewar O gauge red passenger set no. 97E, circa 1929-30 in individual OBs. The set contains the following; 251E red 0-4-0 electric loco with ivory inserts, red lettered brass plates, brass and nickel trim, two 605 Pullmans and a 606 observation car. The cars have ivory inserts, nickel journals and THE LIONEL LINES above the windows. The loco and cars have paint touch up but are C7. The loco box is complete with all flaps and the car boxes are missing some flaps.



2071

Lionel prewar O gauge 258 black 2-4-0 steam loco with brass and copper trim and orange striping and a 258T Lionel Lines tender with brass trim, orange striping and nickel journals, circa 1930. The loco and tender are C8. The loco is in an OB that has an original cardboard insert. The box is missing one flap and has tape repair.



2072

Lionel prewar O gauge terra cotta passenger set no. 294, circa 1930. This set contains the following; 252 electric 0-4-0 loco with scarce black frame, cream striping along the frame edge, brass and nickel trim, two 529 Pullmans and 530 observation car. The four-wheel cars have maroon frames, cream inserts and nickel journals. The loco has been rewheeled. The set is C7-8.



2073

Lionel prewar O gauge 225 black 2-6-2 steam loco with a 2235W die-cast Lionel Lines tender with black journals. The loco and tender are C8.



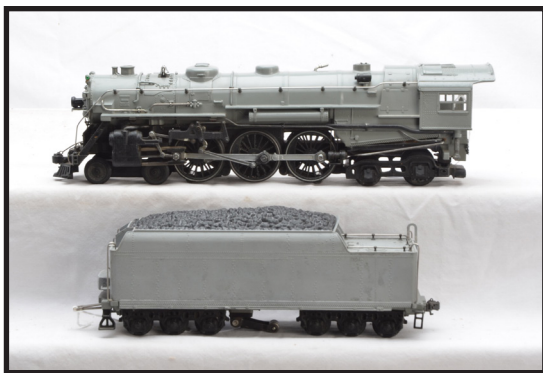
2076

Lionel prewar O gauge original box ONLY for a 700 K-2 construction kit for scale model locomotive no. 700 K.W. The box has no split corners



2074

Lionel prewar O gauge original set box ONLY for freight set no. 229, circa 1930. This set contained the following; 257 loco 257T tender, 831 dark green flatcar and an 807 red caboose. Also included is an original set box ONLY for a red passenger set no. 232, circa 1930. This set contained the following; 257 loco 257T tender, 629 Pullman and 630 observation car. The boxes have no split corners and all four labels are intact.



2075

Lionel prewar O gauge no. 700KW scale Hudson steam loco and tender. The Hudson and tender kits has been assembled. The loco has been painted in glossy gray primer. The tender has been painted in flat gray primer and the primer shows some wear. The loco has one 5344 decal on the engine under the cab window. The casting on the loco and tender are straight and solid. The loco is C8 and the tender is C7-8.



2077

Lionel prewar O gauge 714K scale Pennsylvania boxcar kit which has been assembled. Included with the car are two original envelopes with a few parts and instruction sheet. The car is unpainted black except for the doors, catwalk and roof hatches which are painted in gray primer. One door guide has surface rust. The box is split on one end. Please view photo to verify condition.



2078

Lionel prewar O gauge scale 715K Sunoco tank car kit that has been assembled and is painted in gray primer in OB, C8. The box has no split corners.



2079

Lionel prewar O gauge scale 716K die-cast hopper car kit that has been assembled and is painted in gray primer. Included with the car are two sets of original Baltimore and Ohio decals. The die-cast body on the hopper is solid and straight and is C7-8.



2080

Lionel prewar O gauge original set box and two car boxes ONLY for dark green passenger set no. 92, circa 1925-26. This set contained the following; 152 electric loco, 629 Pullman and a 630 observation car. Also included is an original set box ONLY for red passenger set no. 292, circa 1929-32. This set contained the following; 248 electric loco, 629 Pullman and a 630 observation car. The boxes have no split corners and all four labels are intact. The side no. 92 label has a corner missing.



2081

Lionel prewar O gauge 257 black 2-4-0 steam loco with brass and copper trim and a 257T four-wheel Lionel Lines tender with brass trim. The loco and tender both have orange striping. Other than a couple of minor nicks the loco and tender are C8. The loco and tender are in OBs. The tender box has an original cardboard insert. The loco box is complete with all flaps and has tape repair. The tender box is missing one interior flap.



2082

Lionel prewar O gauge gray/maroon promotional passenger set, circa 1933. This set contains the following; 262E black 2-4-2 steam loco with brass and copper trim, 262T Lionel Lines tender with brass trim and copper journals, 1686 baggage car, 1685 Pullman and a 1687 observation car. The cars have cream inserts, brass trim and copper journals. The set is C7-8. The cars are in OBs that are complete with all flaps.



2083

Lionel prewar O gauge 260E gunmetal steam loco with all nickel trim and a 263W twelve-wheel tender with brass L plates, nickel trim and journals in OBs, C7-8. The loco box has an original cardboard insert. Loco and tender boxes are complete.



2084

Lionel prewar O gauge orange passenger set no. 268, circa 1928-29. The set contains the following; 256 rubber-stamped electric 0-4-4-0 loco with brass window inserts, brass and nickel trim, two 710 Pullmans and a 712 observation car. The cars have dark olive inserts, wood grain doors, NEW YORK CENTRAL LINES above the windows and nickel journals. The set is C7-8.



2085

Lionel prewar O gauge freight cars with nickel trim, black journals and high rise simulated knuckle couplers including the following; 2620 red searchlight car with silver searchlight lamp housing, 2652 burnt orange gondola, 2656 orange cattle car with brown roof and a 3651 operating log car with log load in OB that has an original cardboard insert. The cars are C7-8. The 3651 box is complete with all flaps.



2086

Lionel prewar O gauge Macys promotional peacock passenger set no. 1296 in individual OBs and set box. The set contains the following; 253 electric loco with dark green frame, orange inserts and striping along the bottom edge, brass and nickel trim, two 607 Pullmans, a 608 observation car with a reproduction Macys Special drumhead on the back of the observation deck and an 068 pea green warning signal with brass cross buck and finial. The cars have orange inserts and nickel journals. The set has some minor nicks otherwise is C8. The loco box is missing three flaps. The car boxes have most flaps. The set box lid has tape repaired corners and labels are intact. There is a Macys label on one side of the box lid which is partially intact.



2087

Lionel prewar O gauge 1664 black 2-4-2 steam loco with a 2666W Lionel Lines tender with black journals and low rise simulated knuckle couplers. The loco and tender are C8. The loco is in a box with an original cardboard insert. The box is missing three interior flaps.



2088

Lionel prewar O gauge freight cars with nickel trim and journals including; 651 45N green lumber car with load, 620 red searchlight with aluminum searchlight, 654 silver Sunoco tank, 656 gray cattle car with gray doors, red roof and door guides and a 657 red caboose with cream windows and aluminum end railings. Cars are C7-8. The 651 and 656 are in OBs. The boxes have most flaps attached.



2089

Lionel prewar O gauge freight cars with nickel trim and journals including; 651 45N green lumber car with load, 652 yellow gondola, 655 cream and maroon boxcar, 656 gray cattle car with red roof, red doors and door guides, 659 green dump car and a 657 red caboose with cream windows and aluminum end railings. Cars are C7-8. The 651 and 656 are in OBs. The boxes are missing some flaps.



2090

Lionel prewar O gauge Hiawatha freight set no. 757W, circa 1936-37. The set contains the following; 250E steam 4-4-2 loco, 250W twelve-wheel Lionel Lines tender with nickel trim and journals, 812 45N green gondola with four wooden barrels, 814 yellow boxcar with brown roof and door guides, 815 silver Sunoco tank with brass plates, 816 dark red red hopper and an 817 red caboose. The cars have all nickel trim and journals except for the Sunoco car which has brass plates. The set is C7-8.



2091

Lionel prewar O gauge uncataloged no. 204 gunmetal 2-4-2 steam loco, circa 1940-41 with a 2689W Lionel Lines tender with all nickel trim and journals and high rise simulated knuckle couplers. The loco is C7 and the tender is C7-8.



2094

Lionel prewar O gauge two-tone blue passenger cars with white inserts, nickel trim and journals including; 2615 baggage car, 2613 Pullman and a 2614 observation car. The 2615 and 2614 cars are in OBs. The cars are C7-8. The boxes are missing some flaps.



2092

Lionel prewar O gauge promotional silver Flying Yankee passenger set with fluted sides in individual OBs. The set contains the following; 616W loco with red nose, two 617 coaches, a 618 observation car, three vestibules and a 66 whistle controller, C7-8. The individual OBs have flaps attached except for the 618 which is missing all end flaps on one end. Also included is a set box ONLY for aluminum Flying Yankee set with a black or gray nose. The set box is stamped 1936. The set box has all flaps attached and label is intact but faded.



2095

Lionel prewar O gauge 228 black B-6 0-6-0 switcher rubber-stamped 8976 under the cab windows and a 2228B Pennsylvania slope-back tender with black journals, C8. The loco and tender have automatic box couplers, circa 1939.



2093

Lionel prewar O gauge no. 263E two-tone Blue Comet 2-4-2 steam loco with all nickel trim and a very scarce version 2263W twelve-wheel tender with black journals, nickel trim and high rise simulated knuckle couplers in OBs. The paint and trim on the loco is clean with some minor nicks, otherwise the units are C8. The loco box has an original cardboard insert. The boxes are complete with all flaps. The tender box has some staining. This twelve-wheel tender with black journals is very difficult to find and seldom shows up.



2096

Lionel prewar O gauge promotional darker two-tone red passenger set no. 6606ECX in individual OBs and set box. The set contains the following; 238E gunmetal 4-4-2 Torpedo style steam loco, 2265W Lionel Lines tender, 602 baggage car, 600 Pullman and a 601 observation car. The cars have white inserts and nickel journals. This is a unusual set with a combination of automatic box couplers with nickel journals on the tender and manual couplers with nickel journals on the cars. The set is C8. The engine box is complete with all flaps and the tender box is missing all flaps. The car boxes have most flaps attached. The set box is dated 1938 has one detached top flap and has label fully intact. This set number is not documented and we have not been able to locate it anywhere.



2097

Lionel prewar O gauge two 652 burnt orange rubber-stamped gondolas with nickel brake wheels and black journals in OBs. One of the gondolas has a scratch on it, otherwise the cars are C8. One box is missing most flaps and the other box is complete with flaps.



2098

Lionel prewar O gauge 264E black Commodore Vanderbilt 2-4-2 steam loco and a 265W Lionel Lines tender with nickel trim and black journals, circa 1940. The engine has paint touch up. Loco and tender are C7.



2099

Lionel prewar O gauge freight cars with nickel trim and black journals in OBs including; 2652 yellow gondola, 3652 yellow operating gondola, 3659 automatic dump car and a 2657 red caboose with cream window. The 2652 is a C7-8 and the other two cars are C8. The caboose box has tape repaired flaps. The 3652 box is missing two interior flaps and a tuck flap on one end and the 2652 box is missing most flaps. The 3659 box is missing all flaps on one end.



2100

Lionel prewar O gauge passenger set no. 846W, circa 1941 in individual OBs with original cardboard inserts except for and set box. The set contains the following; 225E black 2-6-2 steam loco, 2235W die-cast Lionel Lines tender with black journals, two 2623 Manhattan Pullmans, 2623 Irvington Pullman, 167 whistle controller, RCS remote control track set and a box with connecting ties, tube of lubricant and a lockon. The loco and tender are C8. One of the 2623 Manhattan Pullmans has a repaired step and one Manhattan has two repaired steps. The Irvington has one repaired step. The cars have some pinhead nicks otherwise the cars are C7-8. The Irvington box is missing all flaps. The Manhattan boxes have reproduction cardboard inserts and the other boxes have repaired flaps. The set box has tape repaired flaps. Label is intact but faded.



2101

Lionel prewar O gauge scarce 2624 Manhattan coach, circa 1941. The coach has a couple pinhead nicks, otherwise the coach is C8. This coach was from the 846W passenger set.



2102

Lionel prewar O gauge uncataloged AMC Special no. 1 passenger set in individual OBs and set box. The set contains the following; 257 black 2-4-0 steam loco with brass and copper trim, 257T four-wheel Lionel Lines tender with brass trim, orange striping and nickel journals, two 607 Pullmans, a 608 observation car, original wooden no. 48 21-volts bulb container, instruction sheet and booklets and Its Fun To Build Your Own Railroad fold out. The apple green passenger cars have dark green roof, cream inserts and nickel journals. The set is C8. The individual OBs are missing coupler flaps. The car boxes are all properly marked APPLE. The set box lid has one split corner. Labels are intact.



2103

Lionel prewar O gauge freight cars with brass trim, nickel journals and latch couplers including; 812 Mojave gondola, 813 orange cattle car with pea green roof and door guides, 815 pea green tank car and an 817 peacock caboose with dark green roof and orange windows in OB. The cars are C7-8. The box has most all flaps attached.



2104

Lionel prewar O gauge freight cars with brass trim and nickel journals including; 811 maroon flatcar with wood load, 813 orange cattle car with pea green roof and door guides and two 816 hoppers, one red and one olive green. The cars are C7-8.



2105

Lionel prewar O gauge yellow and brown Union Pacific streamlined passenger set no. 758W, circa 1939 in individual OBs and set box. The set contains the following; 752W power car, two 753 coaches, 754 observation car, three vestibules, a 95 controlling rheostat and instruction booklet. The die-cast underbellies are solid, straight and intact. The vestibules and underbellies have some scratches, C7-8. The car bodies and roofs are C8. The individual OBs are clean, sealed on one end and have all flaps attached. The set box is complete and label is intact and has nice color graphics.



2106

Lionel prewar O gauge 3814 remote control merchandise car, version with decals, nickel trim, black journals and five brown Baby Ruth merchandise cubes. The decals are intact and except for a couple of nicks the car is C8.



2107

Lionel prewar O gauge passenger set no. 6507E, circa 1936-37 in individual OBs except for the loco. The set contains the following; 262E black 2-4-2 steam loco with brass number plates under the cab windows and nickel trim, 265T Lionel Lines tender with nickel trim and journals, two 610 Pullmans and a 612 observation car. The cars are light blue with aluminum roofs and inserts and nickel journals. The loco and tender are C7-8 and the cars are C7. The boxes are worn and missing flaps.



2108

Lionel prewar O gauge desirable 224E gunmetal 2-6-2 steam loco with a 2224W rubber-stamped Lionel Lines die-cast tender with black journals and high rise simulated knuckle couplers. The loco is C7-8 and tender is C8.



2109

Lionel prewar O gauge 814R white refrigerator car with light blue roof, aluminum frame, brass plates, nickel trim and journals and an 814 yellow boxcar with brown roof and door guides, brass plates, nickel trim and journals. The paint on the cars are bright and clean. Except for a few nicks, the cars are C7-8. The boxcar has an OB that is missing all flaps on one end and shows wear.



2110

Lionel prewar O gauge red promotional Gimbels Special no. 2 passenger set in individual OBs and set box. The set contains the following; 260E black 2-4-2 steam loco with chugger, brass and copper trim and cream striping, 260T eight-wheel Lionel Lines tender with brass trim, cream striping and nickel journals, two 710 Pullmans, a 712 observation car, instruction booklet and instruction car envelope for flags and a Its Fun To Build Your Own Railroad fold out. The twelve-wheel cars have ivory inserts, cream doors and copper journals. The loco and tender are C7-8. The cars are C6-7. The loco box has an original cardboard insert. The loco and tender boxes are complete with all flaps. The car boxes have detached flaps which are included. The set box has a Gimbels sticker. Set box shows wear and labels are intact but are faded.



2111

Lionel prewar O gauge 260E black 2-4-2 steam loco with green frame, brass and copper trim and a 260T Lionel Lines tender with green frame brass and copper trim in OBs. The engine is C8 and the tender is C7-8. The loco box has an original cardboard insert and the boxes are complete with all flaps.



2112

Lionel prewar O gauge passenger outfit no. 136, circa 1931 in individual OBs and set box. The set contains the following; 262 glossy black 2-4-2 steam loco with brass and copper journals, 262T Lionel Lines tender with brass and copper trim and copper journals, 603 Pullman and a 604 observation car. The cars have red bodies, black roofs, cream inserts and copper journals. The set is C7. The individual OBs are damaged and missing flaps. The set box has no split corners and label is mostly intact.



2113

Lionel prewar O gauge red passenger cars with black roofs, cream inserts and copper journals including; two 603 Pullmans and a 604 observation car. The cars are C7. Also included are three no. 603 Pullman OBs that have custom made flaps.



2114

Lionel prewar O gauge orange passenger set no. 292, circa 1927-28 in individual OBs. The set contains the following; 248 electric 0-4-0 loco with brass and nickel trim and peacock inserts, 629 Pullman, a 630 observation and an 068 pea green railroad crossing sign with brass cross buck and finial. The four-wheel passenger cars have peacock inserts and nickel journals. Also included is an extra 629 four-wheel orange Pullman with peacock inserts and nickel journals. The set and extra car are C8. The boxes show wear and are missing some flaps.



2115

Lionel prewar O gauge three no. 54 maroon double lamp posts, C6-7.



2116

Lionel prewar O gauge lithographed freight set no. 1089E, circa 1938. The box contains the following; 1666E gunmetal 2-6-2 steam locomotive, 2689T Lionel Lines tender with nickel trim and journals, 2679 yellow Baby Ruth boxcar with peacock roof, orange door and door guides, 2680 orange Shell tank car and 2682 red caboose. The Shell car has black journals and the other two cars have nickel journals. The engine is C8. The tender and cars are C7-8.



2117

Lionel prewar O gauge 249 gunmetal 2-4-2 steam loco and 265T Lionel Lines tender with nickel journals. The loco and tender have nickel trim. The loco and tender are C7-8.



2118

Lionel prewar O gauge red Lionel Jr. passenger set no. 6208W, circa 1936 in individual OBs, sleeves and set box. The set contains the following; 1688E black 2-4-2 steam loco, 1689T Lionel Lines tender with nickel trim and journals, 1673 coach, 1674 Pullman, a 1675 observation car and a no. 1029 25-watts transformer. To be correct, this set should have a 1689W tender. The loco is C6. the tender and cars are C7-8. The loco box has an original cardboard insert. The loco box is missing some interior flaps. The tender box is complete with most flaps. The set box is complete with all flaps and label is intact. The box has some staining.



2119

Lionel prewar O gauge 265E gunmetal 2-4-2 Commodore Vanderbilt steam loco with a 265W Lionel Lines tender that has nickel journals, circa 1936. Both loco and tender have nickel trim. The engine has some small spots of paint touch up. Loco and tender are C7. The loco is in an OB that has an original cardboard insert and is missing all flaps on one end.



2120

Lionel prewar O gauge original set box ONLY for a 179 freight set, circa 1932. Also included with the box are two four-wheel freight cars with brass trim and copper journals including; 804 aluminum tank car and an 807 red caboose with peacock roof and cupola, C7-8. This set original contained the following; 252 loco, 831 flatcar, 804 tank car and an 807 caboose. The box has no split corners and both labels are intact.



2121

Lionel prewar O gauge 249E gunmetal 2-4-2 steam loco with all nickel trim and a 265W Lionel Lines tender with all nickel trim and journals. The loco is C7. The tender is C6-7.



2122

Lionel prewar O gauge 2814R white refrigerator car with aluminum frame, light blue roof, nickel trim and journals, C7-8.



2123

Lionel prewar O gauge freight cars with nickel trim and journals including; 3811 operating lumber car missing the load, 3859 red operating dump car in OB, 2815 silver Sunoco tank car, 2816 red hopper and a 2817 red caboose. The cars are C7-8. The box has an original cardboard insert and is complete with all flaps.



2124

Lionel prewar O gauge passenger set no. 1088W, circa 1938 in individual OBs, except for the tender and set box. The set contains the following; 1664E gunmetal 2-4-2 steam loco, 1689W Lionel Lines tender with nickel trim and journals, two 1630 Pullmans and a 1631 observation car. The light blue cars have silver inserts and roofs and nickel journals. The loco is C8 and the rest of the set is C7-8. The loco box is missing one end flap. The car boxes are complete with all flaps. The set box is clean and complete with all flaps. The label is intact and has nice color graphics.



2125

Lionel prewar O gauge 763E black semi-scale 4-6-4 Hudson steam loco and a 2226W rubber-stamped Lionel Lines tender with high-rise simulated knuckle couplers with black journals both in OBs, C8. The loco box is missing all flaps on one end. The tender box has two original cardboard inserts and is missing two interior flaps and all flaps on one end of the box.



2126

Lionel prewar O gauge 3811 operating lumber car with five wooden logs and a 3859 red remote control dump car in OB. The cars have nickel trim, high rise simulated knuckle couplers and black journals and are C8. The box is clean and complete with all flaps.



2127

Lionel prewar O gauge 2810 crane with cream cab, red roof, 45N green boom, black knobs, nickel trim and journals and high rise simulated knuckle couplers. The crane is C7-8.



2128

Lionel prewar O gauge 2820 searchlight car with 45N green base, gray die-cast searchlights, nickel trim, high rise simulated knuckle couplers and black journals in OBs. The car has a couple of nicks on the base, otherwise the car is C7-8. The box is damaged.



2129

Lionel prewar O gauge 2817 red rubber-stamped Lionel Lines caboose with Tuscan roof, white windows, high rise simulated knuckle coupler and black journals in OB, C8. The OB is missing two interior flaps.



2130

Lionel prewar O gauge red/maroon promotional passenger set. This set contains the following; 262E black 2-4-2 steam loco with brass and copper trim, 262T Lionel Lines tender with brass plates, nickel trim and copper journals, 1686 baggage car, 1685 Pullman and a 1687 observation car. The red cars have maroon roofs, cream inserts, brass trim and copper journals. The loco and tender are C8 and the cars are C7-8. Also included are two 1685 Pullman and a 1687 observation OBs marked V after the number. The OBs are clean and complete with all flaps.



2131

Lionel prewar O gauge two no. 57 lamp posts, one yellow with Main Street and Broadway and one orange with 42nd Street, Fifth Avenue, 21st Street and Broadway. The lamp posts are C7. The lamp posts are in OBs. One box is complete with all flaps and one is missing most of the flaps.



2132

Lionel prewar O gauge lithographed freight set no. 5205E, circa 1935 in set box missing the 259E engine and 261T tender. Included with the set box are the following lithographed freight cars with nickel journals; 1717 orange and brown gondola, 1719 green boxcar with blue roof, orange doors and brown door guides and a 1722 red caboose with cream details and maroon roof. The cars are C8. The set box is missing one flap and has one detached flap. The label is intact but faded.



2133

Lionel prewar O gauge 253E terra cotta 0-4-0 electric loco with maroon frame, red lettered brass plates, cream inserts, brass and copper journals. The loco is C7.



2136

Lionel prewar O gauge 224E black 2-6-2 steam loco with a 2224W black plastic Lionel Lines tender with black journals and low rise simulated knuckle couplers, circa 1941. The loco and tender are C8.



2134

Lionel prewar O gauge terra cotta passenger cars with terra cotta and maroon roofs, cream inserts and copper journals in OBs including; 615 baggage, 613 Pullman and a 614 observation car. Cars are C7-8. The boxes are missing some flaps.



2137

Lionel prewar O gauge 2755 gray Sunoco tank car with black journals and low rise simulated knuckle couplers in OB with an original cardboard insert. The car has a slight warp on the frame and decals are intact. The car is C8. The box has all flaps missing.



2135

Lionel prewar O gauge 1668 gunmetal Torpedo type 2-6-2 steam loco with nickel trim and a 2689W Lionel Lines tender with nickel trim and journals. The loco and tender are C7-8.



2138

Lionel prewar OO gauge super detailed freight set No. 0092W for two-rail operation in individual OBs, except for the tank car and set box. The set contains the following; 004 Hudson steam loco numbered 5342, 004W New York Central tender, 0074 Tuscan Pennsylvania boxcar, 0075 silver Sunoco tank car and an 0077 red NYC caboose. Set is C8. The loco and tender boxes have original cardboard inserts and cotton wraps. Also included are four original cardboard coupler rings. The individual OBs are missing some flaps and show wear. The set box is complete with all flaps and label is intact.



2139

Lionel prewar OO gauge super detailed 004 black 4-6-4 steam Hudson loco and a 004T New York Central tender for two-rail operation both in OBs with original cardboard inserts and cotton wraps. The loco and tender are C8. The loco box is missing all the flaps on one end and the tender box is complete with all flaps.



2140

Lionel prewar OO gauge super detailed freight cars for two-rail operation including; 0074 Tuscan Pennsylvania boxcar, 0075 silver Sunoco tank car and an 077 red caboose, missing decals on one side in OB, C7-8. The box is missing one end flap.



2141

Lionel prewar OO gauge super detailed freight outfit no. 0080W, circa 1938 for use on three-rail track in individual OBs except for the caboose box and set box. The set contains; 001 black 4-6-4 steam loco, 001W New York Central tender, 0014 Tuscan Pennsylvania boxcar, 0016 black Southern Pacific hopper and an 0017 red NYC caboose. The set is missing the 0015 tank car. Set is C8. All of the components have original cotton wraps. The loco box has an original cardboard inserts. The individuals OBs are missing some flaps. The set box is complete but has no label.



2142

Lionel prewar OO gauge super detailed freight set no 0082 modified for three-rail operation. The set contains the following; 002 Hudson loco numbered 5342, 002W New York Central tender, 0024 Tuscan Pennsylvania boxcar, 0025 silver Sunoco tank car and an 0027 red N.Y.C. caboose. The set is C8.



2143

Lionel prewar OO gauge super detailed 002 Hudson loco numbered 5342 and a 002T New York Central tender modified for three-rail operation. The loco is C7-8 and the tender is C8. The tender is in an OB with original cardboard insert and cotton wrap. The box is complete with all flaps with tape repair.



2144

Lionel prewar OO gauge super detailed freight cars for two-rail operation including; two 0025 black Shell tank cars, 0025 silver Sunoco tank car and an 0027 red N.Y.C. caboose. Also included are two 0025 OBs. The black Shell tanks are C8, The Sunoco tank is C6 and the caboose is C7. The boxes are missing some flaps.



2145

Lionel prewar OO gauge super detailed freight set no. 0090W, circa 1939-42 for two-rail operation in individual OBs, except for the loco. The set contains the following; 003 Hudson steam loco numbered 5342, 003W New York Central tender, 0044 Tuscan boxcar, 0045 silver Sunoco tank car, 0046 black Southern Pacific hopper and an 0047 red N.Y.C. caboose. The decals on the hopper have some minor flaking, otherwise the set is C8. The tender box has an original cardboard insert and cotton wrap. The boxes have most flaps attached.



2146

Lionel prewar OO gauge super detailed freight cars for two-rail operation in OBs including; 0044 Tuscan Pennsylvania boxcar and an 0045 black Shell tank car. The cars are C7-8. The 0044 box is missing an end flap and the tank car box is complete.



2147

Lionel prewar OO gauge super detailed 0044 Tuscan Pennsylvania boxcar for two-rail operation in orange display box with original cardboard insert. The decals are intact and boxcar is C8. The box has some tape repair.



2148

Lionel prewar OO gauge 0045 black Shell tank car for two-rail operation in orange display box with original cardboard insert. The decals on the tank car are all intact. Tank is C8. The OB has no split corners.



2149

Lionel prewar OO gauge super detailed 0046 Southern Pacific hopper for two-rail operation in orange display box with cardboard insert. The hopper has all decals intact, C8. The OB has no split corners.



2150

Lionel prewar OO gauge 0047 red New York Central caboose for 2-rail operation in orange display box with original cardboard insert. The decals on the caboose are all intact. The car is C8. The box has no split corners.



2151

Lionel prewar standard gauge 511 dark green flatcar with wood load, nickel stakes and trim and copper journals and a 520 searchlight car with a terra cotta base, brass trim and copper journals in a damaged box. The cars are C8.



2152

Lionel prewar standard gauge freight cars with brass plates and trim and copper journals including; 514R ivory refrigerator car with peacock roof and a 514 cream boxcar with orange roof and door guides in OB. The cars are C8. The box is missing two interior flaps.



2153

Lionel prewar standard gauge two no. 515 ivory tank cars with brass trim and copper journals, one with Sunoco decals and one without. The decals are intact on the one car. Cars are C8.



2154

Lionel prewar standard gauge pea green passenger set no. 342E in individual OB and set box, circa 1927-28. The set contains; 318E electric 0-4-0 loco with red lettered brass plates and brass trim, 310 Railway Mail baggage car with dark green doors, 309 Pullman and 312 observation car. The loco has been rewheeled. The baggage and Pullman cars have dents in the roof. The engine is C7-8 and the cars are C7. The individual OBs are clean, have all flaps attached and are correctly stamped L GREEN. The set box has tape repaired corners and both labels are intact. The set box is also stamped L GREEN.



2155

Lionel prewar standard gauge 438 illuminated signal tower with Mojave base, pea green tower, cream upper base, orange walls, red roof and doors, white windows, lithographed chimney, brass plate and ladder in OB, C7. The OB is complete with all flaps. Label end is sealed and label is fully intact.



2156

Lionel prewar standard gauge 1835E black steam loco with nickel trim, black painted domes and brass LL plates under the cab windows and a very scarce 384T Lionel Lines tender with red and nickel plates, nickel trim and journals in individual OBs and master carton. Also included is a 390-76 envelope for flags. The loco and tender are C7-8. The individual OBs are complete with all flaps. The tender box has an unusual 1385T stamping. The master carton is missing one interior flap and most of label is missing.



2157

Lionel prewar standard gauge maroon Bailey Special passenger set in individual OBs and set box. The set contains the following; 8 electric 0-4-0 loco with cream inserts and striping along the bottom edge, brass and nickel trim, 35 Pullman and a 36 observation car. The cars have gold window trim, brass steps and nickel journals. Also included is a lubrication instruction card. The engine has been rewheeled. The loco is C6-7 and the cars are C7. The individual OBs are complete with all flaps and stamped WINE. The set box has damage and both labels are intact.



2158

Lionel prewar standard gauge 38 gray rubber-stamped New York Central Lines electric 0-4-0 loco with red window trim and striping along the bottom edge, brass and nickel trim and Lionel Corporation plates on ends. The loco is C7.



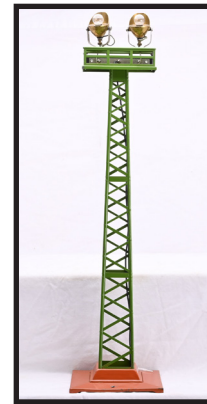
2159

Lionel prewar standard gauge 124 illuminated Lionel City station with 45N green base, tan walls, ivory window and door frames, white doors and windows, red roof, nickel plates and outside light fixtures. The station is C7-8.



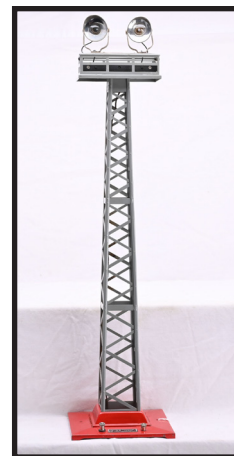
2160

Lionel prewar standard gauge dark green passenger set no. 348E in individual OBs for the cars. The set contains the following; 380E with brass and nickel trim and red lettered brass plates, 429 baggage/combo, 428 Pullman and a 430 observation car. The cars have 200-series trucks, maroon inserts and doors and nickel journals. The loco has been rewheeled and has weights in it. The set is C7. There are two 428 boxes and a 429 box instead of a 428. 429 and 430 box. The boxes are complete with all flaps.



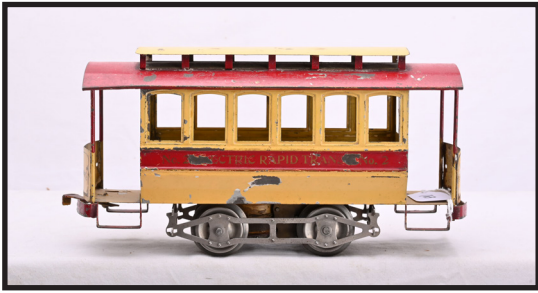
2161

Lionel prewar standard gauge no. 92 floodlight tower with terra cotta base, pea green tower, brass lamp housings and plate, C7-8.



2162

Lionel prewar standard gauge no. 92 floodlight tower with red base, gray tower, nickel lamp housings and plate, circa 1942, C7-8.



2163

Lionel prewar standard gauge no. 2 powered Electric Rapid Transit trolley, circa 1908-09 with yellow body, red band under the window that reads No. 2 ELECTRIC RAPID TRANSIT No. 2, red open clerestory, squared roof, six windows with embossed frames and open end platforms. The underside of the trolley is embossed LIONEL MFG. CO N.Y. The trolley is C5.



2164

Lionel prewar standard gauge no. 2 non-powered Electric Rapid Transit trolley, circa 1908-09 with yellow body, red band under the window that reads No. 2 ELECTRIC RAPID TRANSIT No. 2, red open clerestory, squared roof, six windows with embossed frames and open end platforms. The underside of the trolley is embossed LIONEL MFG. CO N.Y. The trolley is C5.



2165

Lionel prewar standard gauge 1911 dark olive green rubber-stamped New York Central Lines 0-4-0 electric loco late version with thick-rimmed drivers, maroon windows and striping along the bottom edge, brass and nickel trim, C6.



2166

Lionel prewar standard gauge terra cotta/maroon passenger set no 367E, circa 1934 in individual OBs. The set contains the following; 385E gunmetal steam loco with copper and brass trim, 384T Lionel Lines tender with brass and copper trim and copper journals, 1766 baggage car, 1767 Pullman car and a 1768 observation car. The terra cotta passenger cars have maroon roofs, cream inserts, brass trim and copper journals. The loco has some minor nicks and rubs and is C7-8. The tender and cars are C8. The car boxes are all stamped 1768. The individual OBs are complete with all flaps.



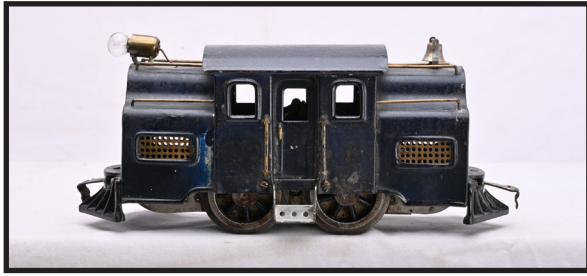
2167

Lionel prewar standard gauge two 69 electric warning bell signals, one olive green with black lettered brass RR crossing cross buck and finial and a white one with a red lettered brass RR crossing cross buck and nickel finial. Also included are two OBs, one yellow and one early style. The signals have a couple of minor nicks, otherwise are C8. The boxes are complete with all flaps, some detached but included.



2168

Lionel prewar standard gauge peacock Macys Special no. 2 passenger set, circa 1929-30 in individual OBs and set box. The set contains the following; 8E electric loco with red lettered brass plates, orange inserts trim and stripe along the base of the frame, brass and nickel trim, 332 baggage, 339 Pullman and 341 observation car with a Macys Special drumhead on the observation deck railing. The cars have orange inserts, Macy Special plates under the windows and nickel journals. The loco has been rewheeled and is C6. The cars are C7-8. The individual OBs are complete with all flaps except for the loco box which has a detached flap. The set box has four split corners and has damage on label end. The top label is intact.



2169

Lionel prewar standard gauge promotional scarce Montgomery Ward no. 33 midnight blue rubber-stamped NEW YORK CENTRAL LINES 0-4-0 electric loco with brass ventilators, brass and nickel trim, C6.



2170

Lionel prewar standard gauge no. 1911 Special maroon passenger set, circa 1911. The cars have red primer undersides. The set contains the following; 1911 New York, New Haven and Hartford 0-4-4-0 electric loco with square hood, 181 Pullman/baggage car, 180 Pullman and a 182 observation car with a long observation deck. The cars have NEW YORK CENTRAL LINES above the windows and dark olive green doors. The engine is C6 and the cars are C5.



2171

Lionel prewar standard gauge 400E gunmetal 4-4-4 steam loco with nickel L plates under the cab windows and painted boiler bands and a 400W twelve-wheel Lionel Lines whistle tender with aluminum and red plates, brass L plate and nickel journals. The loco and tender have all nickel trim. One of the loco number boards is detached but included. The loco and tender are C7-8. The loco box has an original cardboard inset. The box is complete with all flaps.



2172

Lionel prewar standard gauge no. 211 black flatcar with wood load, all nickel trim and journals in OB, C8. The box is complete with all flaps.



2173

Lionel prewar standard gauge 213 cream cattle car with maroon roof and door guides, black lettered nickel plates, nickel trim and journals in OB, C8. One interior flap on the box is detached but included. The label is intact.



2174

Lionel prewar standard gauge 214R ivory refrigerator car with light blue roof, black lettered nickel plates, all nickel trim and journals in OB. The roof has some discoloration. The car body is C7-8. The OB is complete with all flaps and label is fully intact.



2175

Lionel prewar standard gauge 214 yellow boxcar car with brown roof and door guides, black lettered nickel plates, nickel trim and journals in OB. The car is C8. The box is complete with all flaps.



2178

Lionel prewar standard gauge 220 searchlight car with a 45N green platform, all nickel trim and journals in OB, C8. The OB is complete with all flaps.



2176

Lionel prewar standard gauge 216 dark green hopper with black lettered nickel plates, all nickel trim and journals in OB. The paint on the hopper is bright and clean, however there are some light scratches on one side. The car is C7-8. The OB is complete with all flaps.



2179

Lionel prewar standard gauge 217 red caboose with cream doors, nickel trim and journals in OB. The car is C8. The OB is complete with all flaps.



2177

Lionel prewar standard gauge 219 crane car with white cab, red roof, 45N green boom, three black knobs, nickel trim and journals in OB that has an original cardboard insert, C7-8. The OB is complete with all flaps.



2180

Lionel prewar standard gauge apple green passenger set no. 409E, circa 1929 in individual OBs. The set contains the following: 408E electric 0-4-4-0 loco with red lettered brass plates, brass, copper and nickel trim, 418 Pullman, 419 Pullman/baggage combo, 431 dining car and a 490 observation car. The cars have maroon doors, red inserts, brass steps and nickel journals. The interiors in the cars are complete and intact. The loco has been rewheeled. This is a high quality matched original set. The paint is bright and clean and set has strong stampings, however there are some small nicks on the set. The set is C8. The loco box has an original cardboard insert. The individual OBs are complete with all flaps.



2181

Lionel prewar standard gauge 436 power station with 45N green base, cream walls, mustard roof cornices, red skylight, door and window frames, white doors and window inserts, red chimney base, aluminum chimney and brass plate. The station is C7-8.



2182

Lionel prewar standard gauge scarce no. 1912 dark olive green rubber-stamped New York New Haven and Hartford 0-4-4-0 electric loco with square hood, thin rimmed drivers, raised monitor section on roof, maroon ventilators and ventilator flaps and single motor, circa 1910-11. The engine is C6-7.



2183

Lionel prewar standard gauge scarce and desirable no. 19 dark olive green baggage/Pullman, circa 1910 with three high black wooden roof knobs and non-removable roof in OB. The car has NEW YORK CENTRAL LINES above the windows, ribbed vestibules, wooden air tanks, maroon doors and is painted with maroon primer on the underside of the body and interior. The car is embossed on the undersides LIONEL MFG. CO. N.Y. Both couplers are missing on the car. The car is C5. The box has all top flaps detached but they are included. Label is mostly intact. The box does show wear.



2184

Lionel prewar standard gauge scarce and desirable no. 18 dark olive green Pullman, circa 1910 with three low black wooden roof knobs and non-removable roof in OB. The car has NEW YORK CENTRAL LINES above the windows, ribbed vestibules, wooden air tanks, maroon doors and is painted with maroon primer on the underside of the body and interior. The car is embossed on the undersides LIONEL MFG. CO. N.Y. The box is complete with all flaps but shows wear. The label is partially intact.



2185

Lionel prewar standard gauge scarce and desirable no. 18 dark olive green Pullman, circa 1910 with three low black wooden roof knobs and non-removable roof in OB. The car has NEW YORK CENTRAL LINES above the windows, ribbed vestibules, wooden air tanks, maroon doors and is painted with maroon primer on the underside of the body and interior. The car is embossed on the undersides LIONEL MFG. CO. N.Y. The car is C5.



2186

Lionel prewar standard gauge scarce and desirable no. 190 dark olive green observation car with long observation deck that had vertical slats, circa 1910 with three low black wooden roof knobs and non-removable roof in OB. The car has NEW YORK CENTRAL LINES above the windows, ribbed vestibules, wooden air tanks, maroon doors and is painted with maroon primer on the underside of the body and interior. The car is embossed on the undersides LIONEL MFG. CO. N.Y. The car is C5. The OB is complete with all flaps. Label is partially intact and box shows wear.



2187

Lionel prewar standard gauge no. 33 red 0-4-0 rubber-stamped New York Central Lines electric loco with brass and nickel trim, cream windows and cream striping. The loco is C5.



2188

Lionel prewar standard gauge Mojave passenger set no. 352, circa 1925 in individual OBs. The set contains the following; no. 10 electric 0-4-0 loco with black lettered brass plates, brass and nickel trim, two 337 Pullmans and a 338 observation car. The cars have maroon inserts and doors, nickel journals and NEW YORK CENTRAL LINES stamped above the windows. The set is C7-8. The individual OBs are complete with all flaps.



2189

Lionel prewar standard gauge no. 300 Hell Gate bridge with red base, ivory towers, aluminum sides, black railings, brass plates on the center spans and nickel plates on the ends in OB, C7-8. The box is damaged.



2190

Lionel prewar standard gauge Stephen Girard two-tone green passenger set no. 364E, circa 1932-33 in individual OBs. The set contains the following; 9E electric loco 2-4-2 red lettered brass plates and brass trim, 424 Liberty Bell Pullman, 425 Stephen Girard Pullman and a 426 Coral Isle observation with a Pennsylvania Limited drumhead on the end railing. The cars have cream window inserts, brass trim and journals. The loco has one broken coupler. The set is C7-8. The loco box is stamped A. GREEN and the car boxes are stamped APPLE. The OBs have all flaps attached.



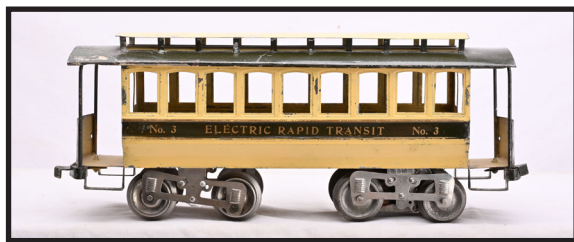
2191

Lionel prewar 911 illuminated estate landscaped plot with 191 villa. The villa has a tan base, cream walls and chimney, apple green window inserts and doors and a red roof. The landscaping on the plot is clean and intact, C8. The villa is C7.



2192

Lionel prewar 911 illuminated Country Estate landscaped plot. The 191 villa has a pea green base, brick lithographed walls and chimney, dark gray roof and ivory window inserts and doors. The villa is the version with no dormers. The landscaping on the plot is clean and intact, C8. The villa is C7-8.



2193

Lionel prewar standard gauge no. 3 power trolley, 1910 with nine windows, dark green body, roof and lower platform end, cream windows, doors and clerestory roof and maroon suspended L-shaped steps. The trolley is embossed on the underside LIONEL MFG. CO. N.Y. and is lettered No. 3 ELECTRIC RAPID TRANSIT No. 3 and No. 3 on both ends. The trolley is C5



2194

Lionel prewar standard gauge no. 3 non-powered trolley, circa 1910 with nine windows, dark green body, roof and lower platform end, cream windows, doors and clerestory roof and maroon suspended L-shaped steps. The trolley is lettered No. 3 ELECTRIC RAPID TRANSIT No. 3 and No. 3 on both ends. The trolley is C5.



2195

Lionel prewar standard gauge dark olive green passenger set no. 34, circa 1913 containing; 33 rubber-stamped New York Central Lines 0-6-0 electric loco with, brass trim, red window trim and red striping along the bottom edge, 35 Pullman and a 36 observation car with a long observation deck. The cars have NEW YORK CENTRAL LINES above the windows and have ribbed sides. The cars are embossed LIONEL MFG. CO. N.Y. on the underside of the frames. The set is C7-8.



2196

Lionel prewar standard gauge no. 42 Mojave rubber-stamped New York Central Lines 0-4-4-0 electric loco with dual motors, brass and nickel trim and red window frames and striping along the bottom edge. The loco is C5-6.



2197

Lionel prewar standard gauge very scarce no. 14 dark olive green Harmony Creamery boxcar, circa 1920. This car was produced for promotional purposes and is one of the hardest Lionel cars to find in original condition. The car is lettered Baltimore and Ohio, Milk Insulated Tank Service, 898 and Harmony Creamery Co. Pittsburgh, Pa. The decals are partially intact. The car is complete with two original milk canisters. The car is C5.



2198

Lionel prewar standard gauge passenger set no. 366W, circa 1936-39 in individual OBs. The set contains the following; 1835E black 2-4-2 steam loco with painted boiler bands, nickel trim and brass LL keystone under the cab windows, 1835W die-cast The Lionel Railway Lines tender with nickel and black plates, nickel trim and journals, 310 baggage, 309 Pullman and a 312 observation car. The light blue passenger cars have aluminum roofs and inserts and nickel journals. The set is C7-8. The boxes are complete with all flaps.



2199

Lionel prewar 910 grove of trees landscaped plot in OB. The trees and shrubbery are clean and intact. The accessory is C8. The OB has been opened from the bottom and label is intact.



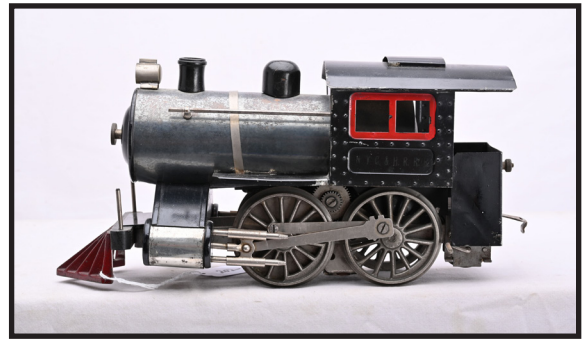
2200

Lionel prewar standard gauge incredible black 400E steam 4-4-4 loco and 400T Lionel Lines tender both with very rare red striping in individual OBs. The loco has a chugger. Loco and tender have brass and copper trim and the twelve-wheel tender has black lettered brass plates and brass journals. This engine and tender are very scarce and the first one we have ever sold. The loco and the tender are C8. The engine box is very unusual with an original label on one side with the word SPECIAL stamped below the label and has a shipping label. The loco box has an original cardboard insert. The loco and tender boxes have all flaps attached. This is one of the highlights of the Jerry Poch collection.



2201

Lionel prewar standard gauge set box only for a 358E work train set, circa 1930. Set contained; 390E loco, 390TX tender with 200-series trucks, 212 gondola, 218 dump, 219 derrick and 217 caboose. Also included is an original instruction booklet. The inside of the set box lid and bottom are dated 1930. The set box lid has one repaired corner. Both labels are fully intact with nice color graphics. This box is very clean and one of the better examples we have seen.



2202

Lionel prewar standard gauge no. 5 steam loco 0-4-0 lettered NYC & HRRR with a Russian Blue boiler early version thin-rimmed drivers, desirable dummy slide on headlight and high bunker, circa 1907-08. The loco is C6-7.



2203

Lionel prewar standard gauge four-wheel black no. 5 rubber-stamped N.Y.C. and H.R.R.R. tender, circa 1907-08 with a single 10-series truck that has three rivet closed side. The tender has red trim and is missing one bottom edge metal trim piece. The tender is C4.



2204

Lionel prewar standard gauge maroon passenger set no. 342, first version, circa 1924 containing; 318 gray electric loco with black lettered brass plates, brass and nickel trim, two 319 Pullmans and a 322 observation car. The cars have Mojave inserts and wood grain doors, 100-series trucks and NEW YORK CENTRAL LINES stamped above the windows. The loco, one of the 319 and 322 cars are C8. The other 319 Pullman is C7-8.



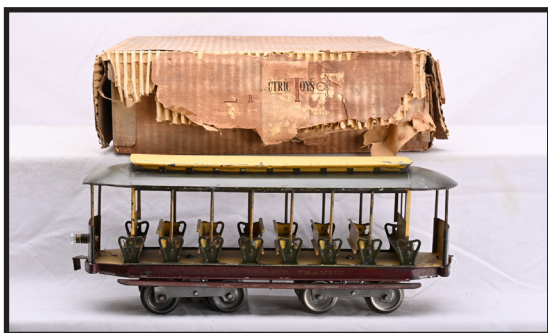
2205

Lionel prewar 912 landscape plot with a 189 illuminated suburban villa in OB. The villa has gray base, mustard walls and dormers, apple green roof and terra cotta chimney. All shrubbery, trees and grass are intact. The plot is C8. The OB is complete with original cardboard insert, all flaps and label is mostly intact but faded. The box shows some wear.



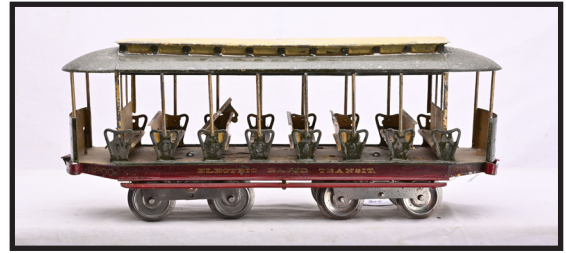
2206

Lionel prewar 912 illuminated suburban home landscaped plot with 189 villa in OB with original cardboard insert. The villa has terra cotta base, white walls and dormers, peacock roof and porch roof, pea green window inserts and red chimney. The trees and shrubs are all intact with bright color. The plot is C8. The OB is complete with all flaps. The label is in tact but faded.



2207

Lionel prewar standard gauge 303 Summer Trolley gold rubber-stamped 303 ELECTRIC RAPID TRANSIT 303, circa 1911-12. The trolley has eight cream benches, dark olive green ends and bottom part of the roof, yellow top roof with clerestory and posts, three rivet solid side trucks, embossed LIONEL MFG. CO N.Y. and maroon base and side in OB. The trolley is C5-6. The inside of the set lid has a paste one instruction sheet. The label on the outside of the box is mostly missing.



2208

Lionel prewar standard gauge 3300 non-powered Summer Trolley trailer gold rubber-stamped 3300 ELECTRIC RAPID TRANSIT 3300, circa 1911-12. The trolley has eight cream benches, dark olive green ends and bottom part of the roof, yellow top roof with clerestory and posts, with three rivet solid side truck, embossed LIONEL MFG. CO N.Y. and maroon base and side. The trolley is C5.



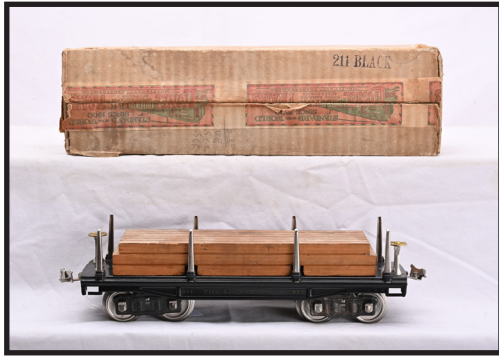
2209

Lionel prewar 913 Illuminated landscaped bungalow plot with 184 bungalow in OB. The bungalow has a gray base, ivory walls and chimney, apple green roof, porch roof and dormer and orange window inserts. The trees and shrubbery are clean and intact. The plot is C8. The box is complete with all flaps. The label is fully intact.



2210

Lionel prewar standard gauge scarce 381 State green Olympian prototype 4-4-4 electric loco, circa 1928-29 with apple green sub-frame, brass and copper trim, black lettered brass plate on one side and brass hand reverse knob on the other side. The engine is C7.



2211

Lionel prewar standard gauge 211 black flatcar with wood load, brass brake wheel, nickel trim and journal in OB, C8. The box is complete with all flaps and label is intact.



2214

Lionel prewar standard gauge 214 cream boxcar with orange roof and door guides, brass trim and nickel journals in OB, C8. The box is complete with all flaps and label is intact.



2212

Lionel prewar standard gauge 212 maroon gondola with six original wooden pull apart barrels, brass trim and nickel journals in OB, C7-8. The box is complete with all flaps and label is intact.



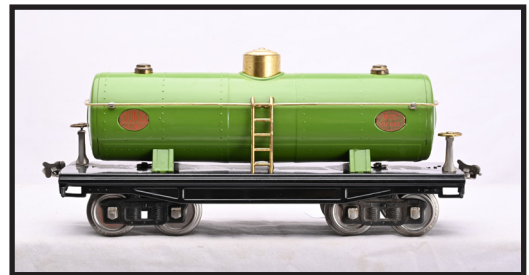
2215

Lionel prewar standard gauge 214R ivory refrigerator car with peacock roof, black lettered brass plates, brass trim and nickel journals. The paint is clean but the car has some very minor scratches, otherwise is C7-8.



2213

Lionel prewar standard gauge 213 terra cotta cattle car with pea green roof and door guides, brass trim and nickel journals in OB. There is one small scratch in the roof, otherwise the cattle car is C8. The box is complete with all flaps and label is intact.



2216

Lionel prewar standard gauge 215 pea green tank car with red lettered brass plates, brass trim and nickel journals, C8.



2217

Lionel prewar standard gauge 216 dark green hopper with red lettered brass plates, brass trim and nickel journals in OB. The car is C8. The box is complete with all flaps. The label is intact.



2220

Lionel prewar standard gauge two-tone State green passenger cars with harder to find cream window inserts, brass trim and journals in OBs including; 412 California Pullman with rivet details, 413 Colorado Pullman missing one hand rail and a 416 New York observation car. The interiors are original and complete. The roof on the 412 car is C6. The rest of the cars are C7-8. The OBs are missing flaps and are worn.



2218

Lionel prewar standard gauge no. 218 Mojave dump car with brass ends and two brass knobs, brass plates and nickel journals in OB, C8. The box is complete with all flaps and label is intact.



2221

Lionel prewar standard gauge no. 66 double semaphore with black base, orange pole, dark green ladder and black finial in desirable OB with yellow label and a 65 single semaphore with black base, orange pole, dark green ladder and black finial. The semaphores are C7-8. The box is complete with no split corners and label is intact.



2219

Lionel prewar standard gauge 217 red caboose with peacock roof and doors, red cupola, brass trim and plates and nickel journals in OB, C8. The box is complete with all flaps and label is intact.



2222

Lionel prewar standard gauge very rare no. 42 black 0-4-4-0 electric loco which was specially made by Lionel for the F.A.O. Schwarz Toy Store in New York. The loco was rubber-stamped F.A.O.S 61 and New York Central Lines. The loco has a single motor, red windows and striping along the bottom, brass and nickel trim. Lionel used an early model of the 42 loco around 1913-14 to manufacture the F.A.O.Schwarz loco around 1913-17. The engine is C7. This locomotive is referenced in the book Collecting Model Trains by Louis H. Hertz on page 206.



2223

Lionel prewar standard gauge very rare no. 38 black 0-4-0 electric loco which was specially made by Lionel for the F.A.O. Schwarz Toy Store in New York. The loco was rubber-stamped F.A.O.S 62 and New York Central Lines. The loco has thick rimmed drivers, red windows and striping along the bottom, brass and nickel trim. Lionel used an early model of the 38 loco to manufacture the F.A.O.Schwarz loco. The engine is C7. This locomotive is referenced in the book Collecting Model Trains by Louis H. Hertz on page 206.



2224

Lionel prewar standard gauge 921 three-section landscaped scenic park with with two 920 end sections and a 921C park center section, three 184 lithographed bungalows, three 189 villas and three 191 villas. The Scenic park is all original. Some of the shrubbery is broken off on the front sections of the plot. The rest of the shrubbery around the houses is clean and intact. The plot is C7-8.



2225

Lionel prewar standard gauge two-tone brown passenger set no. 370E, circa 1932. The set contains the following; 392E black 4-4-2 steam loco with no chugger, brass and copper trim, 384T Lionel Lines tender with green striping, brass and copper trim and copper journals, 310 baggage, 309 Pullman and a 312 observation car. The cars have cream inserts and copper journals. The set is C8.



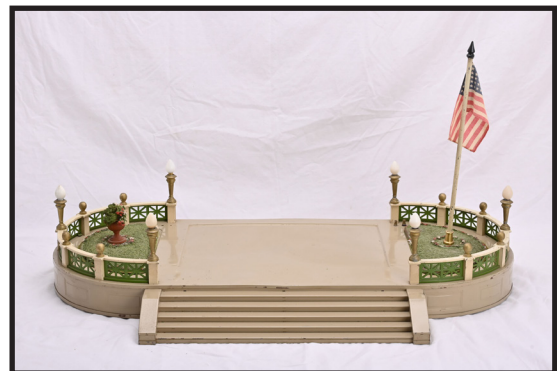
2226

Lionel prewar standard gauge very scarce no. 38 light olive rubber-stamped New York Central Lines 0-4-0 electric loco with red window trim and striping, brass and nickel trim, C7.



2227

Lionel prewar O gauge red Macys Special no. 2 passenger set in set box, circa 1931. This set contained the following; no. 10 electric loco with black lettered brass plates, brass and nickel trim and cream stripe, no. 332 baggage, no. 337 Pullman and a no. 338 observation car with a Macys Special drumhead on the back of the observation deck. The cars have cream inserts and nickel journals. The loco has been rewheeled. The set is C6-7. The set box has some staining and both labels are intact.



2228

Lionel prewar standard gauge 129 terrace with light Mojave base, pea green fences, ivory railings, gold painted lamp posts, two plots, one with terra cotta urn and one with brass flag pole pedestal and flag. The set is C7.



2229

Lionel prewar standard gauge 124 illuminated Lionel City station with dark gray base, terra cotta walls, cream window and door frames, pea green roof and window inserts, maroon doors, brass plates and exterior light fixtures in OB. The station is stamped 122 on the underside. Except for a couple of minor nicks the station is C8. The box is marked 122 and has detached and missing end flaps. The label is mostly intact.



2230

Lionel prewar standard gauge set box ONLY for a Blue Comet passenger set no. 396W, circa 1936-39. This set contained the following: 400E loco, 400W tender, 420 Faye Pullman, 421 Westphal Pullman and a 422 Tempel observation car. The box is complete with all flaps. One end is sealed with reproduction tape. The label is fully intact.



2231

Lionel prewar standard gauge Blue Comet passenger set no. 396W, circa 1936-39 in individual OBs for the loco and tender. The set contains the following: 400E steam 4-4-4 loco with brass L plates under the cab windows, 400W Lionel Lines tender, 420 Faye Pullman, 421 Westphal Pullman and a 422 Tempel observation car. The set has all nickel trim except for the brass L plate on loco. The cars have cream inserts and nickel journals. The car interiors are original and complete. The set is C7-8. The loco box has an original cardboard insert. Loco and tender boxes are complete with all flaps.



2232

Lionel prewar standard gauge Blue Comet Pullman very unusual variation which has Tempel name plates and 422 number plates on a passenger car. The interior of the car is actually for an observation car with only one bathroom and the other end of the car has a window, door and light bulb for an observation deck which was never installed. We have verified this variation with a knowledgeable collector who has an original Blue Comet set consisting of three passenger cars with Tempel plates and a standard 422 Tempel observation car. The car has cream inserts and all nickel trim. Car is C7.



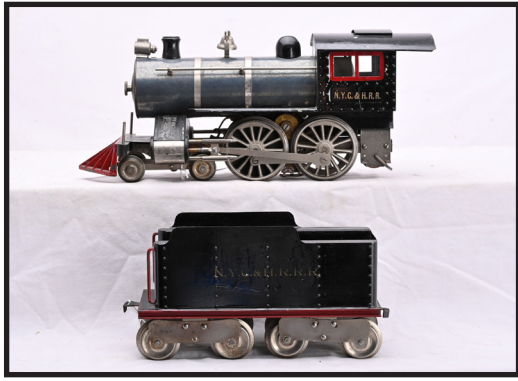
2233

Lionel prewar standard gauge 385E dark gunmetal 2-4-2 steam loco with chugger, brass and copper trim and a 384T dark gunmetal crackle Lionel Lines tender with brass and copper trim and copper journals. The steam chest on the loco has been restored, the rest of the loco is C8 and the tender is C8. The loco is in an OB that is complete with all flaps.



2234

Lionel prewar standard gauge 840 industrial power station harder to find later version with gray floor and light green base. The station has cream walls and steps, apple green windows, orange roof and skylights, three aluminum smokestacks with cream Lionel sign, a red water tank and brass and black plates. The green base and gray floor are C6-7. The rest of the station is C7.



2235

Lionel prewar standard gauge no. 6 N.Y.C. and H.R.R.R. steam loco with Russian blue iron boiler, early version with thin-rimmed drivers, split frame, dummy headlight, red windows and nickel trim and a N.Y.C. and H.R.R.R. tender with red trim and striping on frame and three rivet solid side trucks, circa 1907. The tender has no embossing on the underside. The loco and tender have been black lit and show as original lead paint. The loco is C6 and the tender is C7.



2238

Lionel prewar standard gauge no. 16 maroon Pennsylvania R.R. ballast car early version with yellow primer on underside of the dump and black girder, circa 1908-09. The car has 10-series open sided three rivet trucks with embossed spring detail. The car is C5.



2239

Lionel prewar standard gauge large outer shipping carton. The shipping carton has a label that lists the following items under the article section; 409E, 408E, 412, 413, 414 and 416. There are additional items which are illegible and mostly likely accessory items. The carton measures 24 inches in height by 20 1/2 inches by 19 1/2 inches. The carton is complete with all flaps with one top flap detached but included. This is a very unusual box with an interesting group of components.



2236

Lionel prewar standard gauge no. 11 maroon flatcar early version with yellow primer on underside of frame and no embossing, circa 1908-09. The car has 10-series three rivet open sides trucks with embossed spring details. The car is C6-7.



2237

Lionel prewar standard gauge no. 14 red C.M. and St.P boxcar early version with yellow primer on underside of frame and yellow primer interior numbered 19050, circa 1908-09. The car has black painted ribs and the frame has no embossing on the underside. The car has 10-series open sided three rivet trucks with embossed spring detail. The car is C6.



2240

Lionel prewar standard gauge scarce and desirable 400E black crackle steam 4-4-4 loco with copper and brass trim, brass L plates under the windows and black and white number boards and a 400T Lionel Lines tender with brass and copper trim, black lettered brass plates and brass journals. The loco is C7-8. The tender frame is C6 and the tender body is C7-8.



2241

Lionel prewar standard gauge two no. 61 maroon single lamp posts in early OBs, C7-8. The OBs are complete and labels are intact.



2242

Lionel prewar standard gauge set box ONLY for Mojave passenger set no. 403. This set contained the following; 402 electric loco, 419 Pullman/baggage, 418 Pullman and 490 observation. This set box is unusual due to the fact that it has two large labels on both sides. The labels are intact. The set box is complete with all flaps.



2243

Lionel prewar standard gauge Mojave passenger set no. 403E, circa 1927-28. This set contains the following; 402E electric 0-4-4-0 loco with red lettered brass plates which are rimmed in red, brass and nickel trim and dual small gear Super Motors, 419 baggage/Pullman car, 418 Pullman and a 490 observation car. The cars have maroon inserts, wood grain doors, six-wheel trucks with nickel journals and NEW YORK CENTRAL LINES above the windows. The loco has been rewheeled. Except for a few nicks the set is C8. There is a shipping box for the loco with an original cardboard insert.



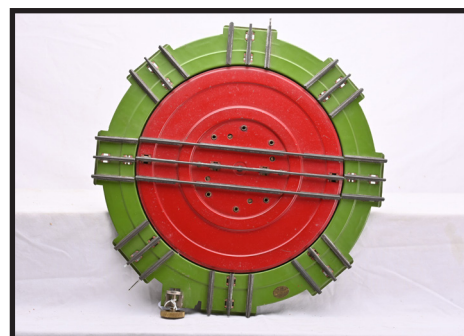
2244

Lionel prewar standard gauge 384 master carton containing the following; 384 black steam loco with a Bild-A-LoCo motor, brass and copper trim, black lettered brass plates and green striping and a 384T Lionel Lines tender with brass trim, green striping and nickel journals in individual OBs. The loco and tender are C8. The loco box has an original cardboard insert and is missing two flaps. The tender box is complete with all flaps. The master carton has no split corners and labels are partially intact.



2245

Lionel prewar standard gauge 444 roundhouse section with terra cotta walls, cream trim bands, maroon windows, dark green skylights, interior lights and pea green roofs. The roundhouse is complete with all windows, doors and both skylights. The roundhouse is C6-7.



2246

Lionel prewar standard gauge 200 pea green and red turntable with brass plate and knob. The red section is C7 and the pea green section is C7-8.



2247

Lionel prewar standard gauge no. 42 dark olive green rubber-stamped New York Central Lines 0-4-4-0 electric loco with thick rimmed wheels, round hood, red window trim and striping along the bottom edge, brass and nickel trim. The roof on the loco has some scratches and is C7. The body of the loco is C7-8.



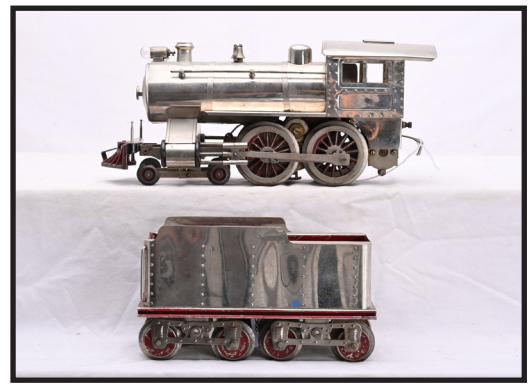
2248

Lionel prewar standard gauge Macys special State Brown passenger set with Lionel no. 352E, circa 1929-30. The set contains the following components; 10E electric loco with a dark green frame, cream striping, red lettered brass plates, brass and nickel trim, 332 baggage, 339 Pullman and a 341 observation car. The State brown passenger cars have dark brown roofs, cream inserts and nickel journals. The engine has one broken coupler. The set is C7. The cars are in OBs that are marked BROWN MS. The 332 box has one damaged flap. The rest of the boxes are complete with all flaps.



2249

Lionel prewar standard gauge eight-wheel freight cars stamped MADE IN U.S.A. THE LIONEL CORPORATION NEW YORK on the undersides of the frames including; 112 gray Rock Island Lines gondola numbered 65784 in OB, 113 pea green cattle car, 114 orange CM and StP boxcar numbered 98237, 116 dark green N.Y.N.H. and H.R.R. ballast car with maroon top rim edge and a 117 maroon NYC and HRRR caboose with black roof numbered 4351. The cars are C7-8. The box has all flaps missing on one end.



2250

Lionel prewar standard gauge very rare no. 7 loco which is all nickel plated and nickel plated tender. The 4-4-0 steam loco has thick rimmed drivers, pedestal headlight and a nickel eight-wheel tender with red interior and frame and single rivet open sided trucks with embossed spring detail. The loco and tender are C7-8. This exact engine is pictured in the TCA Standard of the World Second Edition book on page no. 165. It is believed by many collectors that this engine was in the collection of Herb McBride of Warren, Ohio.



2251

Lionel prewar standard gauge 155 freight shed with a cream base, terra cotta floor, pea green posts, maroon roof with cream underside, brass finials and plates in a worn OB with all flaps missing on one end and the label is mostly intact on the other end. The shed is C7.



2252

Lionel prewar 163 freight station set in yellow box with original cardboard dividers and white label. The set contains the following; two 157 maroon hand trucks, 161 pea green baggage truck and a 162 dump truck with peacock dump and orange frame, C7-8. The OB has no split corners and label is fully intact.



2253

Lionel prewar standard gauge dark olive green 1912 electric 0-4-4-0 loco with a single motor, pedestal headlight, maroon ventilators and window trim and is rubber-stamped in script lettering New York, New Haven and Hartford. This is the version with square hood and thick-rimmed wheels, circa 1912. The roof has small spots of paint touch ups. The rest of the Loco is C7-8.



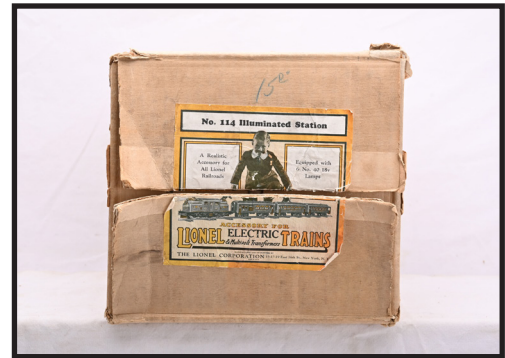
2256

Lionel prewar standard gauge 114 illuminated Lionel City station with terra cotta base, beige walls, maroon doors, apple green windows, roof cornices and skylights, brass clock inserts and brass painted light fixtures. The base of the station is faded. The station is C6.



2254

Lionel prewar standard gauge scarce early no. 17 red N.Y.C. and H.R.R.R. caboose numbered 51906, circa 1907 with three rivet closed sided trucks, black painted lines, black roof and window awnings and yellow primer on the underside and interior of the caboose. The interior has two benches. The caboose is C5.



2257

Lionel prewar standard gauge 114 Lionel City station original box ONLY which is has all flaps attached, sealed on one end and the label is intact.



2255

Lionel prewar standard gauge passenger set no. 350, circa 1925-26 in set box with original cardboard dividers. The set contains the following; no. 8 maroon electric loco with black lettered brass plates, brass and nickel trim, no. 35 Pullman and a no. 36 observation car. The olive green cars have NEW YORK CENTRAL LINES above the windows and have 500 series trucks with nickel journals. The Pullman has three hole steps and the observation car has solid steps. The loco is C6-7. The cars are C7-8. The set box has two side flaps detached but included. The set box is worn.



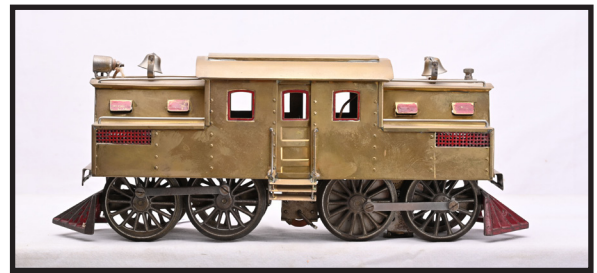
2258

Lionel prewar standard gauge no. 3 eight-wheel trolley with single motor and nine embossed windows, circa 1908. The trolley has a cream body, orange band and openings in clerestory and is rubber-stamped under the windows No. 3 Electric Rapid Transit No. 3, three rivet closed side trucks and embossed floor. The trolley has open ends with poles. The trolley is C5.



2259

Lionel prewar standard gauge no. 3 eight-wheel trolley non powered with nine embossed windows, circa 1908. The trolley has a cream body, orange band and openings in clerestory and is rubber-stamped under the windows No. 3 Electric Rapid Transit No. 3, three rivet closed side trucks and embossed floor. The trolley has open ends with poles. The trolley is C5.



2262

Lionel prewar O gauge scarce and desirable no. 1912 special brass 0-4-4-0 electric loco with square hood, single motor, thin rimmed drivers, red painted ventilators, hatches and window trim and nickel trim, circa 1911. Loco is missing both couplers. The loco is C7-8.



2260

Lionel prewar standard gauge two-tone blue passenger set no. 366E, circa 1934 in individual OBs, except for the tender. The set contains the following; 1835E black steam loco with nickel trim, black painted boiler bands and domes with brass LL keystone under the cab windows, 1835W tender with whistle which is stamped 1835T on underside, black and nickel plate, nickel trim and journals, 310 baggage, 309 Pullman and a 312 observation car. The cars have cream inserts and copper journals. The loco is C8. The tender has some dimpling in the body, however the die cast is solid and intact, C7-8. The cars have some minor nicks otherwise are C8. The loco OB has two original cardboard inserts. The individual OBs are complete and clean. Set box is missing two interior flaps and label is intact.



2263

Lionel prewar standard gauge 155 illuminated freight shed with white base, red floor, aluminum posts and finials, gray roof trimmed in red and nickel plates in OB. The freight shed is C7-8. The box is missing two interior flaps and is worn.



2264

Lionel prewar standard gauge freight set no. 345 in set box, circa 1924-26. This set contains the following; no. 380 Mojave 0-4-0 electric loco scarce version with brass ends painted Mojave, large Super Motor, large nickel bell, extra large nickel whistle, black lettered brass plates rimmed in red around the Lionel and 380, brass and nickel trim, 12 gray Lake Shore gondola, 14 orange CM and StP boxcar numbered 98237, 15 maroon gold rubber-stamped Pennsylvania tank car with three hole gold steps, black tank ends and wooden dome and a no. 17 maroon NYC and HRRR caboose with black roof numbered 4351. The loco has been rewheeled and has some paint flaking, C5. The cars are C7-8. The set box is missing one interior flap and part of label. The box is damaged.



2261

Lionel prewar standard gauge two-tone blue 309 Pullman car with cream inserts and copper journals in OB. The car roof has one dent otherwise C8. The OB is complete with all flaps.



2265

Lionel prewar standard gauge set no. 1 four cardboard billboards consisting of Vitalis Hair Oil, Black Jack Gum, Lifebuoy Health Soap and Ipana Tooth Paste. These billboards were offered to individuals who enrolled in the Lionel Engineers Club from late 1932. The billboards are complete but show some minor wear. The easels are intact. Billboards are C7-8.



2266

Lionel prewar standard gauge two-tone brown 408E electric 0-4-4-0 loco from the 411E State set, circa 1930-33. This loco is the version with the dark brown roof. Loco has red lettered brass plates, brass and copper trim, cream inserts and striping. The loco has two BILD-A-LOCO motors. The roof is C6, the rest of the loco is C7.



2267

Lionel prewar standard gauge no. 94 high tension tower with terra cotta base, dark gray tower, six original porcelain insulators and brass plate. The base is C7-8 and the rest of the tower is C8.



2268

Lionel prewar standard gauge 217 red caboose, harder to find, unusual version with peacock roof and matching peacock cupola, black lettered brass plates, brass trim and nickel journals in OB, C7. The OB is complete with all flaps.



2269

Lionel prewar standard gauge 116 maroon N.Y.N.H. and H. ballast car with full yellow primer on the underside and embossed LIONEL MFG. CO N.Y. The car has some paint flaking and is C5.



2270

Lionel prewar standard gauge no. 100 Electric Rapid Transit trolley with red body and roof, cream windows, doors and clerestory, circa 1914-1915. The trolley has six embossed windows with closed end platforms that have flush windows and is lettered 100 Electric Rapid Transit 100 on both sides. The trolley is embossed on the underside LIONEL MFG CO N.Y. Both ends are punched out for lighting terminals but the sockets are missing. The trolley is C7.



2271

Lionel prewar standard gauge 212 maroon gondola with six wooden barrels, black lettered brass plates, brass trim and copper journals in OB marked WINE. Except for a couple of minor nicks the gondola is C8. The OB is complete with all flaps and label is intact.



2272

Lionel prewar standard gauge 219 derrick with peacock cab, dark green roof, red boom and window inserts, brass trim, three nickel knobs and copper journals in OB. The car is C8. The OB is complete with all flaps and label is intact.



2273

Lionel prewar standard gauge 220 floodlight car with terra cotta base, brass trim and copper journals in OB, C8. The OB is complete with all flaps.



2274

Lionel prewar standard gauge 217 red caboose with peacock roof and doors, black lettered brass plates, brass trim and copper journals in OB, C8. The box is complete with all flaps and label is intact.



2275

Ives prewar O gauge lithographed passenger set no. 570X, circa 1930 in individual OBs and set box with bottom of the set box an 1868 Ives R.R. tunnel. The set contains the following: 3258 New Haven style electric 0-4-0 loco with buff body, dark green roof and frame and gold trim, 552 Parlor car, 558 observation car, eight curve track sections in OBs, eight straight track sections in OBs, kit box with track clips, 202 30-watts transformer and a rheostat. The observation car is very unusual as it using the body of a 552 Parlor car. The four-wheel passenger cars are buff and green with dark green roofs and frames. The set is C7. The individual boxes are missing some flaps. The set box has no split corners and label is intact.



2276

Ives prewar O gauge no. 17 black cast iron clockwork 0-4-0 steam loco with red, black and gold lithographed plate under the cab two rectangular windows, ten spoke wheels and two boiler bands and a no.11 four-wheel lithographed Ives tender, circa 1917. The loco and tender are C6.



2277

Ives prewar O gauge olive green lithographed passenger set no. 504. The set contains the following; 3253 gold rubber-stamped N.Y.C. and H.R. electric 0-4-0 loco with a black cast iron frame, red window trim and nickel trim, 130 Buffet car and two no. 129 Saratoga cars one with an observation deck. The eight-wheel olive green cars have darker green roofs, orange and yellow details and brass journals. The set is C7-8.



2278

Ives prewar O gauge first version of the 801 four-wheel lithographed clockwork trolley using a No. 51 yellow Newark parlor car body with a dark green frame and roof. The sides have PENNSYLVANIA LINES above the windows. The trolley is C6.



2279

Ives prewar O gauge no. 52 four-wheel black Limited Vestibule Express Buffalo Parlor car with black roof and trucks that have red lithographed spring details. The car is C6.



2280

Ives prewar O gauge no. 3 black tin lithographed clockwork 2-2-0 steam loco, 2nd series, with IMC logo under the cab windows and cast iron wheels, circa 1903-04 with a no. 1 four-wheel black and red lithographed F.E. tender with red lithographed spring details, cross hatched floor on the front of the tender and cast iron wheels. The loco is C6-7 and the tender is C7.



2281

Ives prewar O gauge no. 54 four-wheel lithographed cherry red and black gravel car with harder to find horizontal striping, olive trim on the bottom and top edges, red lithographed spring detail on frame and loop couplers, circa 1904-09. The car is missing a coupler. The car is C6.



2282

Ives prewar O gauge The Colombian orange and black passenger set no. 577, circa 1930. The set contains the following; 3257 orange 0-4-0 electric loco with brass trim, two 141 Pullmans and 142 observation car. The eight-wheel passenger cars are orange with black roofs and vestibules, brass plates and journals. The loco is C5 and the cars are C6.



2283

Ives prewar O gauge yellow-orange lithographed 12578 Union Pacific Furniture car with red roof, snake track pull couplers and brass journals. The roof is C6-7 and the body is C7-8.



2284

Ives prewar O gauge dark red lithographed 12582 Frisco Lines automobile car with dark red roof, snake track pull couplers and brass journals. The roof has been repainted and the car body is C7-8.



2285

Ives prewar O gauge 121 red caboose with a gray cupola roof, brass trim and journals and has a 3211 American Flyer body, C6.



2286

Ives prewar O gauge Black Diamond Jr. passenger set no. 462R, circa 1928 in set box with original cardboard inserts. The set contains the following: 1120R black 4-4-0 cast iron steam loco with brass and gold trim, 25T eight-wheel tender stamped N.Y.C. and H.R. with brass journals and weights, two 143 Pullmans, 144 observation car and controller. The black passenger cars have red roofs, red vestibules, red trucks, brass plates and journals. The stampings on the loco is faded. The set box lid is missing the sides with three partial pieces included.



2287

Ives prewar O gauge eight-wheel lithographed freight cars with T-trucks, no journals and black frames including: 63 gray N.Y.C. and H. R. gravel car, no. 65 orange live stock car with green roof and a 67 red The Ives Railway Lines caboose with gray roof and cupola. The 65 car has paint flaking on one end and is C6-7. The 63 car is C6-7 and the caboose is C6.



2288

Ives prewar O gauge Limited Vestibule Express lithographed passenger set no. 2, circa 1908-09. The set contains the following no. 2 black cast iron clockwork 0-2-2 loco with two boiler bands and lithographed plate below the rectangle cab windows, no. 1 red and black four-wheel F.E. no. 1 tender with cross hatching on the front of the floor and red spring details, no. 50 translucent white United States Mail baggage car and a no. 51 translucent green Brooklyn passenger car. The four-wheel cars have red spring details, black roofs and silver painted clerestories. The coupler on the tender is custom made. The set is C6.



2289

Ives prewar O gauge four-wheel lithographed freight cars with black frames including; 54 white and green gravel car, 55 cream and green Live Stock Transportation car with light green roof and a 56 white and green Pennsylvania Lines caboose with light green roof and dark green cupola roof. The cars are C6-7. Also included is a four-wheel no. 57 brown flatcar with wood load, C7-8.



2290

Ives prewar O gauge scarce and desirable no. 25 black cast iron clockwork 4-4-0 steam loco early version with six boiler bands, thick red band under the three rectangular cab windows and six spoked drivers and a no. 11 four-wheel red and black lithographed L.V.E. four-wheel tender with cross hatching on the floor and red and black spring detail, circa 1903. The loco and tender are C6.



2291

Ives prewar O gauge scarce no. 131 red lithographed Chicago baggage car with black roof, silver and red clerestory, eight-wheel inboard trucks, yellow doors, gold and black details. The car has LIMITED VESTIBULE EXPRESS above the doors. The car is C6.



2292

Ives prewar O gauge scarce no. 130 red lithographed New York baggage/Buffer car with black roof, silver and red clerestory, eight-wheel inboard trucks, gold and black details. The car has LIMITED VESTIBULE EXPRESS above the windows. The car is C6.



2293

Ives prewar O gauge scarce no. 129 red lithographed Philadelphia Parlor car with black roof, silver and red clerestory, eight-wheel inboard trucks, gold and black details. The car has LIMITED VESTIBULE EXPRESS above the windows. The roof is C5 and the car body is C6.



2294

Ives prewar O gauge no. 600 dark green single lamp post, circa 1913-14, C6-7.



2295

Ives prewar O gauge unique and unusual no. 66 eight-wheel canary yellow Standard Oil Company tank car with a black dome, canary yellow trucks and numbered 66 on the ends. The car is C8. This car is referenced in the book *Collecting Model Trains* by Louis H. Hertz on page 214.



2296

Ives prewar O gauge unique and unusual no. 66 eight-wheel black Standard Oil Company tank car, black trucks and numbered 66 on the ends. The car is C8. This car is referenced in the book *Collecting Model Trains* by Louis H. Hertz on page 214.



2297

Ives prewar O gauge unique and unusual no. 66 eight-wheel white Standard Oil Company tank car, black dome, white trucks and numbered 66 on the ends. The car is C8. This car is referenced in the book *Collecting Model Trains* by Louis H. Hertz on page 214.



2298

Ives prewar O gauge unique and unusual no. 66 eight-wheel blood red Standard Oil Company tank car, black dome, blood red trucks and numbered 66 on the ends. The car is C7-8. This car is referenced in the book *Collecting Model Trains* by Louis H. Hertz on page 214.



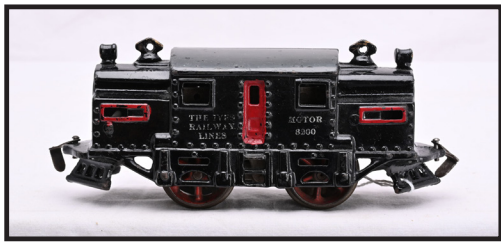
2299

Ives prewar O gauge two no. 601 white double lamp posts, one with shades and one without shades and two terminals. The lamp post with shades is C7-8 and the other lamp post is C6.



2300

Ives prewar O gauge scarce and desirable HOD Seagrave special deluxe copper passenger set no. 400, circa 1929. The set contains the following; 1122 die-cast 4-4-2 steam loco with nickel trim, 25 eight-wheel die-cast The Ives Railway Lines tender with nickel trim, trucks and brass journals, two 141 Parlor cars and a 142 observation car. The copper cars have nickel roofs, window inserts, diaphragms and trucks, brass plates and journals. The cars have brass Pullman plates above the windows. The set has copper plated die-cast wheels. If you look closely there is a hairline crack on cab window near the top of the handrail on one side. The set is C6. This set is very rare with only 6-7 sets known to exist.



2301

Ives prewar O gauge 3200 cast iron 0-4-0 black rubber-stamped electric loco with red trim and gray roof, C7-8.



2302

Ives prewar O gauge four-wheel orange lithographed passenger cars with black frames, orange and black details including; 50 baggage car, 51 chair car missing a coupler and a 52 parlor car with dark olive green roof. The roofs on the no. 50 and 51 cars have been repainted, otherwise the cars are C7.



2303

Ives prewar O gauge lithographed Limited Vestibule Express passenger set, circa 1905-07. The set contains the following; no. 0 tin clockwork 2-2-0 steam loco with dark blue boiler, two windows and lithographed cab roof, lithographed red and black four-wheel F.E. no. 1 tender with cross hatching on the front of the floor and red spring details, no. 50 United States Mail baggage car and a no. 51 Hiawatha passenger car. The four-wheel cars are yellow with black details, red spring details, black roofs and red and black lithographed vestibules. The set is C7.



2304

Ives prewar O gauge no. 17 black cast iron clockwork 0-4-0 steam loco with red lithographed number plate under the windows, no rivet detail and three boiler bands and a no. 11 four-wheel lithographed black and red L.V.E. tender with rivet detail, cross hatching on the tender floor and spring details, circa 1908-09. The loco is C8 and the tender is C7-8.



2305

Ives prewar O gauge no. 54 four-wheel lithographed cherry red and black gravel car with vertical striping, olive trim on the bottom and top edges, red lithographed spring detail on frame and loop couplers, circa 1904-09. The car is missing a coupler. The car is C7-8.



2306

Ives prewar O gauge passenger set no. 1609, circa 1931 in set box marked Spec.. The set contains the following; 1663 black 2-4-2 steam loco with brass and copper trim, 1663T black eight-wheel tender with brass and copper trim and copper journals, except for two which are brass. two 610 Pullmans, 612 observation car, track clips, four straight track sections and four curve track sections. The eight-wheel passenger cars are olive green with red inserts and nickel journals. There are THE IVES LINES decals above the windows and Ives Corporation stickers on the underside of the car frames. The set has a couple of minor nicks, otherwise is C8. The tender and track are in individual OBs. The track boxes have only one interior flap missing. The tender box has a replaced end flap. The set box has no split corners.



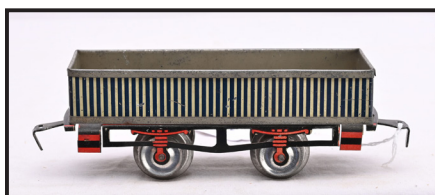
2307

Ives prewar O gauge no. 257 black 2-4-0 steam loco with brass and copper trim and orange striping and a 257T Ives Lines four-wheel tender with brass trim, nickel journals and orange striping. The loco frame has a slight warp. The loco and tender are C6-7.



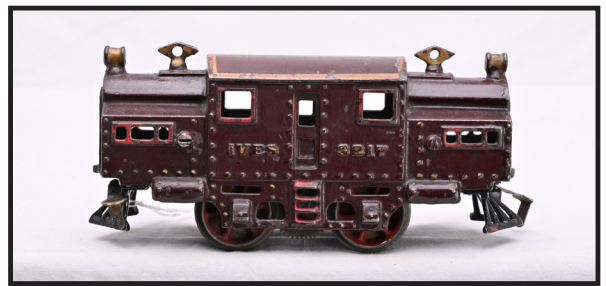
2308

Ives prewar O gauge lithographed Limited Vestibule Express passenger set no. 12, circa 1908-09. The set contains the following; no. 11 black cast iron clockwork 0-4-0 steam loco with gold trim, three boiler bands and red nameplate below two windows, no. 11 four-wheel lithographed L.V.E. tender with dark green frame, no. 60 cream United States Mail Exp. Service baggage car with green roof and doors and orange lettering, no. 61 red Empress coach with a green roof and black details and a no. 62 blue Princess Parlor car with a gray roof and gold details. The four-wheel passenger cars have dark green frames. The set is C7-8.



2309

Ives prewar O gauge no. 63 four-wheel lithographed gravel car with blue and light gray vertical stripes, circa 1904-06. The car has black frame with red lithographed spring detail. The car is C7.



2310

Ives prewar O gauge 3217 maroon cast iron 0-4-0 electric loco with raised letters, circa 1911-13 with gold trim. The loco is C6-7



2311

Ives prewar O gauge eight-wheel dark blue lithographed Limited Vestibule Express passenger cars with dark green frames, yellow details, T-trucks, gray roofs and red raised section of roof including; 60 baggage car and a 61 Yale coach, C7-8.



2312

Ives prewar O gauge no. 62 eight-wheel light blue lithographed Limited Vestibule Express Harvard Parlor car with yellow details, gray roof, red raised roof section, dark green frame and T-trucks, C7.



2313

Ives prewar O gauge no. 125 eight-wheel buff and blue lithographed Fast Freight Line Merchandise car with red and black lithographed striping on the roof and inboard trucks, circa 1904-1909. The car is C5.



2314

Ives prewar O gauge three 143 eight-wheel orange Parlor cars with black vestibules, brass trim, brass Pullman plates above the windows, snake track pull couplers and brass journals. The cars have paint flaking, otherwise cars are C6.



2315

Ives prewar floor toy lithographed passenger set including; no. 17 cast iron 0-4-0 steam loco, no. 11 four-wheel red and black L.V.E. tender, 160 cream Limited Vestibule Express baggage car with green roof, gray frame and orange details, 161 red Empress coach with a dark green roof, green frame and black details and a 162 dark blue Princess Parlor car with dark green roof, gray frame and gold details. The set is C7.



2316

Ives prewar O gauge no. 25 black cast iron clockwork 4-4-0 steam loco with four boiler bands, gold and red trim and three windows trimmed in gold on the cab on each side and a no. 25 four-wheel black, red and yellow lithographed L.V.E. tender with rivet detail and red lithographed spring detail, circa 1906-09. The loco and tender are C7.



2317

Ives prewar O gauge no. 131 eight-wheel yellow lithographed Limited Vestibule Express Chicago baggage car with red and black details, black roof, silver and red clerestory and inboard trucks. The car roof is C5 and the car body is C7.



2318

Ives prewar O gauge no. 130 eight-wheel yellow lithographed Limited Vestibule Express New York baggage/Buffer car with red and black details, black roof, silver and red clerestory and inboard trucks. The car is missing a coupler. The car is C7.



2319

Ives prewar O gauge no. 20 black cast iron clockwork 0-4-0 steam loco with white rubber-stamping under the two cab window, three boiler bands, red and gold trim and a no. 25 eight-wheel Limited Vestibule Express tender, circa 1914-16. The loco and tender are C7-8.



2320

Ives prewar O gauge Red Hawk passenger set no. 484, circa 1929. The set contains the following; 3255 black 0-4-0 electric loco with red frame and brass trim, two 135 Parlor cars and a 136 observation car. The eight-wheel red passenger cars have black roofs and truck, brass Pullman plates above the windows, brass trim and journals. Also included is an extra no. 135 red eight-wheel Parlor car with black roof, brass Pullman plates above the windows, brass trim and journals. The set is C6.



2321

Ives prewar O gauge 130 lithographed Limited Vestibule Express New York baggage/Buffer car with inboard trucks. The car has gray-white sides with blue lettering, gold trim, black and red lithographed stripes on roof and silver clerestory with black details. The roof is C5 and car body is C7.



2322

Ives prewar O gauge four-wheel lithographed no. 50 red Limited Vestibule Express baggage car with cream and black details, black roof, silver detail on the clerestory, red and black lithographed vestibules and cream spring detail and cross hatching on the frame. The car has one detached coupler which is included and one missing coupler. The car is C6.



2323

Ives prewar O gauge no. 51 yellow lithographed Limited Vestibule Express Iroquois chair car with a black roof with silver details on the clerestory, circa 1906. The four-wheel car has red and black striped vestibules, cross hatched frame and cream lithographed spring details. The car is C6.



2324

Ives prewar O gauge four-wheel lithographed no. 51 brown Limited Vestibule Express Iroquois chair car with orange and black details, black roof, silver detail on the clerestory, red and black lithographed vestibules and cream spring detail and cross hatching on the frame. The car is missing a coupler. The car is C6.



2325

Ives prewar O gauge forest green lithographed Limited Vestibule Express passenger set no. 1115X, circa 1913-16. The set contains the following; 3238 black cast iron rubber stamped 2-4-2 electric loco with red trim, 131 baggage, 130 Buffet and a 129 Saratoga coach. The eight-wheel passenger cars have green frames, gray roofs with red raised roof sections, Hi-M trucks and are lettered LIMITED VESTIBULE EXPRESS above the windows. The loco is C7-8. The cars are C7.



2326

Ives prewar O gauge 115 lithographed Freight Station, circa 1908-09 with orange painted walls, lithographed plates on each side, raised platform and ramp, diamond patterned roof and cast iron chimney top. The station is missing the freight station plates. The station is C7.



2327

Ives prewar O gauge 3230 black cast iron 0-4-0 rubber-stamped electric loco with red trim. The loco has one chip on one corner of the cab roof, otherwise is C8.



2328

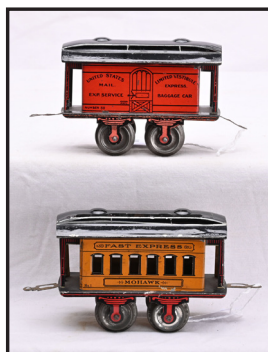
Ives prewar O gauge uncatalogued lithographed freight set containing; 257 black 2-4-0 steam loco with brass and copper trim and orange striping, 257T four-wheel tender with brass trim, orange striping and nickel journals, 1707 brown gondola in OB, 1708 green stock car with tan doors and door guides in OB, 1709 light green boxcar with orange doors and door guides and blue roof and a 1712 red caboose with maroon roof and cream windows. The eight-wheel cars except for the 1708 stock car have nickel journals. The 1708 car has copper journals. The one corner of the cab roof is dented. The loco and tender are C7. The 1709 boxcar has a faded area on one side. Freight cars are C7, except for the caboose which is C8. The flaps on the 1708 are all attached on one end and the other end is missing all flaps. The flaps on the 1707 are all attached on one end and the other end is missing all flaps.



2329

Ives prewar O gauge lithographed freight set no. 1102F, circa 1913 containing the following; 1100 black cast iron 0-4-0 steam loco with two boiler bands, red and gold trim and a lithographed plate below the single window on the cab, no. 1 four-wheel red and black F.E. tender with dark green frame, 57 gray lumber car with load and a no. 56 white caboose with black and red details and gray roof. The four-wheel freight cars have gray frames. The loco and tender are C6-7 and the cars are C6.

2330



Ives prewar O gauge four-wheel lithographed passenger cars with black roofs, silver details on the clerestory, lithographed vestibules and red spring details, circa 1903 including; no. 50 red Limited Vestibule Express baggage car and a no. 51 yellow/orange Mohawk chair car with a no. 1 on lower left side of the car and Fast Express above the windows. The cars are C7.



2331

Ives prewar O gauge no. 63 four-wheel lithographed blue and gray vertical striped gravel car with copper inside the body walls and dark green frame, circa 1904-06. The car is C6-7.



2332

Ives prewar O gauge 1122 black die-cast 4-4-2 steam engine with brass and copper trim and a no. 25 eight-wheel die-cast The Ives Railway Lines tender with brass trim and journals. The loco has one damaged spot on the die-casting near the smoke stake. The cowcatcher has been replaced and loco is C5. The tender is missing one brass plate and is C7.



2333

Ives prewar O gauge mechanical lithographed Limited Vestibule Express passenger set no. 12, circa 1906. The set contains; no. 11 black cast iron clockwork 0-4-0 steam loco with four boiler bands, thick red stripe under the one window and red and gold trim, No. 11 L.V.E. black four-wheel tender with red cross hatched floor and red lithographed spring details, 50 yellow baggage car, 51 yellow Hiawatha coach and 51 red Iroquois coach. The four-wheel cars have black roofs with silver clerestory, red lithographed spring detail and the vestibules have red and black lithographed detail. Set is C7.



2334

Ives prewar O gauge no. 17 black cast iron clockwork 2-2-0 steam loco with four boiler bands, brake lever, thick red stripe under the single cab window, red and gold trim, circa 1904 and a no. 11 four-wheel red and black L.V.E. tender with cross hatching on the floor and red and black lithographed spring detail missing the coupler. The loco has been partially repainted. The tender is C7.



2335

Ives prewar O gauge no. 0 black cast iron clockwork 2-2-0 steam loco with two boiler bands and lithographed plates under the single cab window, circa 1911 and a no. 1 four-wheel F.E. red and black lithographed tender with red spring details on the frame and cross hatching on the floor. The tender is missing a coupler. The loco and tender are C6-7.



2336

Ives prewar O or 1 gauge 113 lithographed passenger station with lithographed red brick walls, cast iron window frames, door frames and chimney top, gray roof and red, gray and black octagonal pattern on the base floor. The station is lettered TICKET OFFICE on one side and TELEGRAPH OFFICE on the other side. The center brace in the station is detached but included. The station is C6-7.



2337

Ives prewar 1 gauge third series rubber-stamped no. 40 black cast iron clockwork 4-4-0 steam loco with key a no. 40 eight-wheel tender with black trucks that are trimmed in red. The loco and tender are C7.



2338

Ives prewar 1 gauge eight-wheel high-sided brown lithographed passenger cars with gold, yellow and red details, black trusses and black trucks that have red trim including; 70 New York and Chicago baggage car lettered NEW YORK CENTRAL LINES above the windows and doors, no. 71 New York and Chicago Baggage/Buffer car and a 72 Chicago parlor car. The no. 71 and 72 cars are lettered TWENTIETH CENTURY LIMITED above the windows. The roofs on the cars are gray with red raised sections. The roofs are C5-6. The bodies are C6-7.



2339

Ives prewar O or 1 gauge scarce and desirable early 123 lithographed terminal station consisting of two 116 Grand Central stations and a 121 glass dome with eight panels, circa 1908-11. The stations have a V-shaped bay, cast iron window and door frames and chimney tops and lithographed brick walls. The glass dome has eight glass panels. The terminal station is C6.



2340

Ives prewar 1 gauge scarce and desirable mechanical straw yellow lithographed passenger set no. 44 circa 1906. The set contains the following; first series no. 40 cast iron clockwork steam 4-4-0 loco with nickel, red and gold trim, no. 40 eight-wheel T.C.L.E. tender with red and gold trim, 70 baggage and Express car, 71 Saint Louis combine and a 72 San Francisco parlor car. The eight-wheel high-sided cars have orange and black details, green roofs and silver and red clerestories. The cars are lettered TWENTIETH CENTURY LIMITED EXPRESS above the windows. The black trucks on the tender and cars have red trim. The set is C6-7.



2341

Ives prewar 1 gauge 1st series 3239 black cast iron 0-4-4-0 rubber-stamped electric loco with red, gold and nickel trim. The loco body has been repainted. The cab roof is original but has paint touch ups.



2342

Ives prewar 1 gauge eight-wheel low-sided white wood lithographed passenger cars with yellow doors, red frames on doors and windows including; no. 71 Buffet/Baggage New York and Chicago no. 72 Chicago Parlor car and a no. 72 Chicago observation car. The 71 and 72 cars have gray roofs with green raised sections and red trim on the trucks and the 72 observation car has a gray roof with black raised section. The cars are C5.



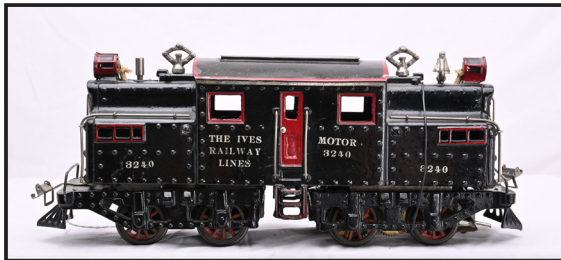
2343

Ives prewar 1 gauge rubber-stamped 1129 black 2-4-2 cast iron steam loco with a no. 40 eight-wheel Ives tender. The loco has been repainted except for the stamping under the windows.



2344

Ives prewar O or 1 gauge no. 203 lithographed power house, circa 1912-14 largest size with two transformers, wooden base and lithographed stack. This is the harder to find and desirable version with window detail on the gable ends. The power house has all original cloth covered wiring and plug. The power house is C7-8 except for the base of the smoke stack which is missing most of the paint.



2345

Ives prewar 1 gauge 3240 black cast iron 0-4-4-0 rubber-stamped electric loco with red and nickel trim. The center section on one side of the loco has been professionally restored. One truck is loose from the body. The rest of the loco is C7-8.



2346

Ives prewar 1 gauge eight-wheel high-sided brown lithographed passenger cars including; no. 71 New York and Chicago Buffet/Baggage car, no. 72 Washington Pullman and a no. 73 observation car. The cars have red, green gold and yellow details, green and dark green roofs and THE IVES RAILWAY LINES above the windows. The black trucks have red trim. The roof on the 73 car has paint flaking. The roofs are C6 and the bodies are C7-8.



2347

Ives prewar wide gauge 113 tin lithographed passenger station with punched out doors, tan base and maroon roof, circa 1926-28, C7.



2348

Ives prewar wide gauge red passenger set no. 701, circa 1921 in set box that has original cardboard dividers. The set contains the following; 3241 rubber-stamped N.Y.C. and H.R. 0-4-0 electric loco dark green window trim and nickel trim, 184 Buffet, 185 Parlor car and a 186 observation car. The cars are gold rubber-stamped and have no journals. The loco is C6 and cars are C7. The set box lid has two split corners and label is intact.



2349

Ives prewar wide gauge Lionel Irvington production 1771 dark green lumber car, circa 1931-32 with nickel stakes, brass brake wheels and copper journals. This car used a Lionel 511 flatcar body and 500-series trucks. The car is C7-8.



2352

Ives prewar wide gauge Bridgeport production 197 green flatcar with wood load, green stakes, brass journals and brake wheels, circa 1930. Ives sold these cars using a Lionel 211 flatcar body mounted on Ives trucks and couplers. The car is C7.



2350

Ives prewar wide gauge scarce and desirable Prosperity Special passenger set no. 1000R, circa 1929 in set box. The set consists of the following; 1134R die-cast very rare nickel plated steam loco, 40 nickel plated die-cast The Ives Railway Lines tender with brass plates, black trucks, copper wheels and brass journals, 241 Club, 242 Parlor, 243 observation car. The American Flyer bodied cars have IVES brass plates, copper bodies and nickel roofs, trim, roofs and side trucks, copper wheels and brass journals. The loco has some flaking on the cab roof. The die-casting on the loco and tender is solid and intact and loco and tender are C7. The cars are C7-8. There is an original cardboard insert and divider in the set box. The set box has one split corner with nice color graphics. The Prosperity Special is a very important train and was a top of the line set produced by Ives.



2353

Ives prewar wide gauge Bridgeport production 193 orange stock car with orange frame, maroon roof, black door guides, brass plates, trim and journals circa 1930. Ives sold these cars using a Lionel 213 cattle car body mounted on Ives trucks and couplers. The car roof is C6 and the body is C7.



2354

Ives prewar wide gauge Bridgeport production 199 derrick car with peacock blue cab, red roof, boom and window inserts, three brass knobs, brass plates and nickel journals, circa 1930. The car is rubber-stamped 199 on both sides under the windows. Ives sold these cars using a Lionel 219 derrick car body mounted on Lionel trucks and has Ives couplers. The car is C6-7.



2351

Ives prewar Member Ives Railway Lines pin, C8.



2355

Ives prewar wide gauge scarce and desirable no. 1070 Circus Set, circa 1930. The set contains the following; 1134 black die-cast 4-4-2 steam loco with brass and copper trim and brass boiler front that has a hooded headlight, no. 40 The Ives Railway Lines tender with brass trim and journals, 20-192 yellow Circus equipment car with an American Flyer body, red roof, Ives trucks and shortened snake track pull couplers, 20-193 yellow Circus Animal Car with an American Flyer body, red roof, Ives trucks and shortened snake track pull couplers, three 196C yellow flatcars, one with two original tent wagons with three canvas covers and two flatcars with two original white animal wagons each and a 185 red Parlor Car with a Lionel body, black roof, brass trim and couplers, Ives trucks and shortened snake track pull couplers. Included with the set are five metal pulls for the animal wagons and a selection of Celluloid animals made by Viscaloid which were purchased by Ives, ten on plastic bases and seven without bases. One door on one of the animals cages has been replaced. The set is C6.



2356

Ives prewar wide gauge reproduction cloth Circus tent with a green wooden base. The tent and base are C8.



2357

Vintage Coca-Cola original cardboard Circus window display, circa 1927. The display includes sixteen pieces. The display is complete except for two small sections. The display has some repairs and shows wear.



2358

Ives prewar wide gauge unusual no. 3243R New York Central Lines black 4-4-4 electric loco with a cast iron frame. This engine has 3242R brass plates on both sides. It is believed that Ives ran out of 3243R plates and used the 3242R plates instead. The engine is the version with no brass doors and has brass trim. The loco is C7.



2359

Ives prewar wide gauge 600 single lamp post with dark olive green base and white and no. 601 double lamp post with black base and gray post. The posts are C7.



2360

Ives prewar wide gauge set terra-cotta/maroon passenger set no. 1734E in individual OBs for the cars only, circa 1932. This set contains the following; 1764 terra cotta 4-4-4 electric loco with maroon roof and frame and brass trim, 1767 baggage, 1766 Pullman and 1768 observation car. The terra cotta cars have maroon roofs, cream inserts, brass trim and copper journals. The set is C7-8. The OBs are complete with all flaps.



2361

Ives prewar wide gauge no. 307 dark green die-cast double street lamp in OB with an original cardboard insert. The lamp post has some repairs and is C6-7. The box is missing part of one side panel on the lid.



2362

Ives prewar wide gauge scarce gray passenger set no. 691R, circa 1926-27. The set contains the following; 3235R electric loco with brass trim and plates, 184 baggage/ Buffet combo car and a 186 observation car. The passenger cars were intended to have brass plates but are gold rubber-stamped. The cars have gold window trim and brass journals. The engine has been rewheeled and is C6. The cars are C5.



2363

Ives prewar wide gauge no. 190 orange-brown silver rubber-stamped Texas Oil tank car with black dome and trusses in OB. The car is the version with no journals. The tank is C7-8. The box has no split corners.



2364

Ives prewar wide gauge 192 orange Santa Fe Ventilator and refrigerator car with black door frames and trusses. The car is the version with no journals in OB. C7. The box has no split corners but has some staining.



2365

Ives prewar wide gauge 193 red-brown Live Stock car with black details and trusses. The car is the version with no journals. The car is in an OB that has no split corners.



2366

Ives prewar wide gauge scarce and desirable white passenger set no. 704, circa 1924 in set box with original cardboard dividers and the top tray. The set contains the following; 3243 white 4-4-4 rubber-stamped N.Y.C. and H.R. electric loco with cast iron frame, nickel trim and red window trim, 187-3 Buffet car 188-3 Parlor car, a 189-3 observation car, eight curve track section and eight straight track sections. The cars are rubber stamped, have gray vestibule and have no journals. This set is very clean with a few minor nicks and is the best example we have every sold. The set is C7-8. The set box has a shipping label and is missing the set no. label. The box shows some wear. This was Herb Morleys Ives white passenger set and it is pictured in the book Antique Toy Trains by Howard Godel.



2367

Ives prewar O or wide gauge no. 333 Railroad Crossing banjo signal with a dark green cast iron base, ivory pole and RR Crossing shield, C6-7.



2368

Ives prewar wide gauge dark olive green passenger set no. 702, circa 1921-23 in set box with original cardboard dividers. The set contains the following; 3242 silver rubber-stamped N.Y.C. and H.R. electric loco with red window trim, nickel trim and black cast iron frame, 187 Buffet car, a 189 observation car, controller, track clips and lockon. The cars are gold rubber-stamped N.Y.C. and H.R. above the doors of the cars and THE IVES RAILWAY LINES above the windows. The loco is very clean and has a couple of minor nicks. Engine is C7-8. The Buffet car has paint flaking on the roof and the car body is C7-8. The observation car is C7-8. The set box has heavy tape repair. The label is mostly intact.



2369

Ives prewar wide gauge 301 double arm semaphore with a bluish gray cast iron base and dark green ladder and ivory pole. The semaphore is C7.



2370

Ives prewar wide gauge scarce and desirable The Chief passenger set no. 1077R, circa 1930. This set contains the following; 1134R die-cast black 4-4-2 steam loco with hooded headlight on the gold painted boiler front, brass and copper trim, no. 40 The Ives Railway Lines die-cast tender with brass trim and journals and black trucks, 247 Club car, 248 Pullman and a 249 observation car. The cars have Lionel bodies, are black with red roofs and trucks and have brass journals, yellow window trim and decals. The loco has been rewheeled. The die-cast cab on the locomotive is intact however has some bubbling. The loco is C6 and the tender is C7. The cars all have paint flaking on the roof and a few spots on the sides. The observation car is damaged on one corner of the roof. The cars are C6.



2371

Ives prewar wide gauge 332 automatic bell signal with red cast iron base, ivory pole brass Railroad Crossing cross buck and bell, C6.



2372

Ives prewar wide gauge The Skyliner Cadet blue passenger set no. 1073, circa 1930 in individual OBs with two original cardboard trays and two wraps and set box. The set contains the following; 3242 electric 0-4-0 New York Central Lines loco with brass plates and trim, 184 Club car, 185 Parlor car, a 186 observation car with observation railing from a 312 Lionel observation car, track clips, kit box with track clips, controller, original bulb box, vial of oil lubricant, eight straight track sections and eight curve track sections in OBs. The cars have brass Pullman plates above the windows, brass plates, trim and journals. The loco has been rewheeled. The loco is C6. The Club car is C6-7 and the other cars are C7. The loco box is two part with an outer sleeve.



2373

Ives prewar wide gauge no. 185 Cadet Blue Parlor Car with brass trim and journals and Pullman plates above the windows in OB, C7. The OB is missing three interior flaps.



2374

Ives prewar wide gauge scarce and desirable 3242 mahogany brown Wanamaker Railway Lines 0-4-0 electric loco with nickel trim, gold rubber-stamping, black cast iron frame and orange painted window frames, circa 1924. The stampings are strong and the paint is very clean with some minor nicks, C7-8.



2375

Ives prewar wide gauge scarce and desirable no. 196 mahogany brown Wanamaker flatcar with gold rubber-stamping, circa 1924, C6.



2376

Ives prewar wide gauge scarce and desirable no. 190 mahogany brown Wanamaker Texas Oil tank car with gold rubber-stamping and black dome, circa 1924. One coupler is detached but included, C6.



2377

Ives prewar wide gauge scarce and desirable no. 191 mahogany brown Wanamaker coke car with gold rubber-stamping, circa 1924. The car is missing the top rail on one side and is missing one coupler. The car is C5.



2378

Ives prewar wide gauge scarce and desirable no. 193 mahogany brown Wanamaker Live Stock car with gold rubber-stamping, circa 1924. The car is C5.



2379

Ives prewar wide gauge scarce and desirable no. 195 mahogany brown Wanamaker caboose with gold rubber-stamping, circa 1924, C6.



2380

American Flyer prewar O gauge lithographed passenger set M13, circa 1914 in set box with original cardboard dividers. The set contains the following; no. 1 black cast iron clockwork 0-4-0 steam loco with thick red bands under the single windows on the cab, no. 120 four-wheel American Flyer Lines tender, 1108 Express Service baggage car, 1107 passenger car, pair of manual switches, ten curve track sections and four straight sections. The four-wheel cars are green with UNION PACIFIC R.R. above the windows, orange window trim, yellow details and black frames and roofs. The set is C7. The set box lid has four split corners. The top label in intact. The inside of the lid has printing on set information.



2381

American Flyer prewar O gauge no. 102 four-wheel lithographed red and dark green Chicago coach with gold details, black frame and roof, two-riser step and four windows missing a coupler in OB, C7-8. The box lid is missing one end flap.



2382

American Flyer prewar O gauge uncataloged lithographed passenger set, circa 1928. The set contains the following; 1090 orange lithographed Empire Express 0-4-0 electric loco with green roof, green and gold details and two 1107-type passenger cars, one coach and one observation car. The four-wheel orange cars have green roofs, green and gold details, AMERICAN FLYER LINES and black frames. The set is C7-8.



2383

American Flyer prewar O gauge lithographed passenger set no. 2, circa 1914-17 in set box that has original cardboard inserts. The set contains the following; no. 2 cast iron clockwork 0-4-0 steam loco with red band under the cab window, no. 120 four-wheel American Flyer Line tender, 1108 AFL Express Service Baggage car, an 1107 coach, eight curve track sections and two straight track sections. The four-wheel yellow and green cars have black roofs and frames, red and green details and AMERICAN FLYER LINES above the windows. The set is C7. The set box has four split corners and both labels are intact.



2384

American Flyer prewar O gauge no. 12 black cast iron clockwork 0-4-0 steam loco with two boiler bands and thick green band below the single cab windows and a four-wheel no. 328 green and orange lithographed tender. The loco and tender are C7.



2385

American Flyer prewar O gauge scarce eight-wheel red Chicago coach with black, gold and white details, black roof and frames. The cars have five windows and T-trucks and measure 6 1/2 inches in length. The car is C7.



2388

American Flyer prewar O gauge scarce earliest freight car 242 four-wheel red coal car with black frame, circa 1910, C6-7.



2386

American Flyer prewar O gauge scarce eight-wheel blue Chicago coach with black, gold and white details, black roof and frames. The cars have five windows and T-trucks and measure 6 1/2 inches in length. The car is C7.



2389

American Flyer prewar O gauge scarce earliest freight car 242 four-wheel black coal car with yellow top rim trim and black frame, circa 1910, C5.



2387

American Flyer prewar O gauge very unusual uncataloged department store special orange lithographed in original set box which is stamped with the following two set numbers; no. 7307T and no. 4370R. The set box has a price tag that reads Carson, Pirie, Scott and Co. The set contains the following; 561 orange and silver electric streamlined steam loco, three Paul Revere coaches, Lexington coach, Lexington observation car, eight curve track sections, six straight track sections, 220 clock, a 207 single arm semaphore, manual for maintenance of electrical train, envelope for a 450 track terminal set and clips. The four-wheel cars have turquoise, yellow and black details. The set is C7-8. The set box has no split corners and label is intact.



2390

American Flyer prewar O gauge made by the Edmonds-Metzel Manufacturing Co. reddish-orange lithographed passenger set no. 1, circa 1907. The set contains the following; no. 2 black cast iron clockwork 0-4-0 steam loco with thick green band beneath the single window on cab and four boiler bands, four-wheel no. 328 reddish-orange and cream tender with brown frame and a four-wheel no. 102 reddish-orange and cream Chicago Pullman with three unpunched windows, black roof and unpainted frame. The loco and car are C5-6 and the tender is C7.



2391

American Flyer prewar O gauge 434 loco/tender combination, circa 1939 consisting of a 432 black die-cast 4-4-2 Atlantic steam engine with a 433A eight-wheel rubber-stamped American Flyer Lines tender with brass journals. The loco and tender are C7-8. The tender is in an original box that is complete with all flaps.



2392

American Flyer prewar O gauge two-tone green streamliner passenger set. no. 1771-RW, circa 1936. The set contains; 4680 loco/tender combo with a 1681 black Hudson 2-6-2 steam loco with gray cab windows, brass and copper trim and white striping, 1620 American Flyer Lines eight-wheel tender with green American Flyer Lines decal and brass journal, three 1621G coaches and a 1622G observation car. The cars have black trucks with brass journals. The set is C7-8.



2393

American Flyer prewar O gauge 4622-6 loco/tender combination consisting of a 4322-6 black die-cast 4-6-2 steam loco with red cab windows, white striping, brass and copper trim and a 1623 twelve-wheel rubber-stamped American Flyer Lines tender, circa 1938. The loco and tender are C7-8.



2394

American Flyer prewar O gauge light yellow/brown Union Pacific streamlined passenger set 11, circa 1938. The set contains the following; 1684 power car, three 1621Y coaches and 1632Y observation car. The cars have black trucks with brass journals. The set is C7. The cars are in OBs that are missing some flaps.



2395

American Flyer prewar narrow gauge 2206 highway flashing signal with orange die-cast base, brass and black plates, brown painted pole and green cast iron signal arms which have been restored in OB. Also included is an original instruction sheet. The signal is C6. The box has no split corners and label which is fully partially intact.



2396

American Flyer prewar O gauge 20th Century Limited passenger set no. 1307, circa 1921-24. This set contains a 3020 black electric 4-4-4 rubber-stamped loco, three lithographed green passenger cars; 3000 baggage, 3001 Illini Pullman and a 3001 Illini observation car. The cars have orange window trim and black air tanks. The set is C7-8.



2397

American Flyer prewar narrow gauge 2042 die-cast crossing gate with green base in OB and a 610 yellow die-cast bumper with a section of straight track in OB with original paper wrap. The bumper is C8 and the crossing gate is C7. The OBs are complete with all flaps. The label on the 2042 box is fully intact.



2398

American Flyer prewar O gauge passenger set in set box, circa 1911-14. The set contains the following; no. 1 black cast iron clockwork 0-4-0 steam loco with snap-in-motor, two wide boiler bands and thick red band under the one window on the cab, 328 four-wheel black and red lithographed tender and a four-wheel no. 102 red lithographed Chicago coach, version with four windows, black roof and frame, green and gold details. The set is C6-7. The set box has original cardboard dividers and one split on the side.



2399

American Flyer prewar O gauge scarce four-wheel no. 1103 green and yellow lithographed Parlor Car with Continental Flyer Line above the windows, red and black details, black frame and roof, C7.



2400

American Flyer prewar O gauge Nation Wide Lines two-tone blue uncataloged lithographed passenger set. The set contains the following; 3113 box cab electric 0-4-0 locomotive with brass trim, yellow windows and black frame with weights, 80 baggage car, 81 coach and 81 observation car. The eight-wheel cars have yellow, white and black details and black journals. The set is C7-8.



2401

American Flyer prewar O gauge no. 3184 loco/tender combination consisting of a 3180 black cast iron 2-4-0 steam loco with brass trim and turquoise stripe with a 3189 four-wheel tender with American Flyer wing decals on each side with brass journals. The striping on the engine is partially worn off and loco has been rewheeled. The loco and tender are C8.



2402

American Flyer prewar O gauge made for British Market lithographed passenger set, circa 1920-23 consisting of a 4000 black cast iron clockwork 0-4-0 steam loco, four-wheel no. 120 tender with red and white details, 2872 G.N.R. Mail Van with brown, cream and gold details and a 2871 G.N.R. First Pullman with brown and gold details. The four-wheel cars have black roofs and frames. The baggage car roof is C6 and the rest of the set is C7.



2403

American Flyer prewar O gauge orange lithographed Panther passenger set no. 2, circa 1928-30. The set contains the following; no. 12 black cast iron clockwork 0-4-0 steam loco with a four wheel no. 120 orange, turquoise and cream American Flyer tender, 1108 baggage with brown doors, red, black and cream details and an 1107 Jefferson coach with turquoise, cream and black details. The four-wheel passenger cars have green roofs and black frames. The loco is missing the plates under the cab windows. The set is C7-8.



2404

American Flyer prewar O gauge lithographed passenger set containing the following; no. 1 black cast iron clockwork 0-4-0 steam engine with two wide boiler bands, no rivet detail and thick red stripe under the one window on each side of the cab, four-wheel no. 328 black and orange tender and two four-wheel dark Navy blue and red Chicago coaches with black roofs and frames, four windows and three riser steps. The cars have gold details. One of the coaches is missing a coupler. The loco and tender are C6. The cars are C7.



2405

American Flyer prewar O gauge 3316 loco/tender combo consisting of a 3315 black die-cast 2-4-2 steam loco with brass and copper trim and turquoise striping, 3199 eight-wheel AFL tender with brass trim, gray trucks and brass journals and three two-tone turquoise passenger cars with brass trim, red air tanks, gray trucks and brass journals including; two 3281 Pullmans and a 3282 observation car. Also included is an instruction sheet. The tender is C8 and the rest of the set is C7-8. The loco and cars are in OBs. The loco box is damaged and the car boxes are complete with most flaps.



2406

American Flyer prewar O gauge lithographed passenger set containing the following; no. 2 black cast iron clockwork 0-4-0 steam loco with four thin boiler bands and a thick green stripe below the single cab window on each side, four-wheel no. 328 orange and black tender, two four-wheel white Chicago coaches with black frames and three windows. One of the coaches has a black roof and red and black details and the other coach has a gray roof and green and black details. The set is C6-7.



2407

American Flyer prewar O gauge scarce no. 515 four-wheel red lithographed Chicago coach with NEW YORK EXPRESS above the windows, brown and yellow windows, yellow and black details, black roof and frame. The car is C7.



2408

American Flyer prewar O gauge two no. 509 four-wheel red, black and white lithographed tenders, one Illinois Central and one Southern Pacific. The Southern Pacific tender is C6-7 and the Illinois Central is C7.



2409

American Flyer prewar O gauge two original set boxes ONLY for sets, both with original dividers. There are no visible set numbers on the boxes. One box has tape repaired corners. The other box has two split corners. Both boxes have labels intact. They are stained and show wear.



2412

American Flyer prewar O gauge 3/16 scale Tru-Model die-cast freight set no. 550, circa 1939 in set box with original cardboard inserts. The set contains the following; 568 loco/tender combination consisting of a 566 die-cast 4-8-4 steam loco numbered 806 and 567 Union Pacific tender, 510 brown Missouri Pacific stock car, 508 gray Virginian hopper, 512 silver Texaco tank car with a broken coupler, 516 red Union Pacific caboose, three straight track sections, eight curve track sections and one straight uncoupler track sections with controller button. The set is C7. The set box has two split corners and has nice color graphics.



2410

American Flyer prewar O gauge 3/16 scale die-cast dark green passenger set no. 4022, circa 1940 in set box with original cardboard inserts. The set contains the following; 531 die-cast NYC J-3A 4-6-4 steam Hudson, 563 New York Central tender, 521 combo car, two 524 Pullmans, twelve curve track sections, one straight track section and one uncoupler track with control button. The set is a C8 except for the 521 which is C7-8. The OB lid has one split corner but has nice color graphics.



2413

American Flyer prewar O gauge 3/16 scale die-cast two 504 dark gray Lehigh New England gondolas numbered 15503 with nickel journals. The cars are C7-8.



2411

American Flyer prewar O gauge 427 loco/tender combination consisting of a 424 black die-cast 2-6-4 steam loco and a 426 eight-wheel American Flyer tender with link couplers, nickel trim and journals. The loco and tender are C7-8.



2414

American Flyer prewar O gauge 422 loco/tender combination consisting of a 420 black die-cast 2-4-2 steam loco with brass and copper trim and a no. 421 eight-wheel American Flyer Lines tender with link coupler, brass trim and journals. The loco and tender are C8.



2415

American Flyer prewar wide gauge Century passenger set no. 1492RC, circa 1932-33 containing; 4694 loco/tender combination consisting of a 4692XRC black 4-4-2 steam loco with brass and copper trim and turquoise striping and a 4693 Vanderbilt tender, 4340 Club, 4341 Pullman, 4343 dining and a 4342 observation car. The tender and cars have gray set trucks, brass trim and brass journals. The passenger cars are Rookie Tan and have green roofs. The set is C7-8.



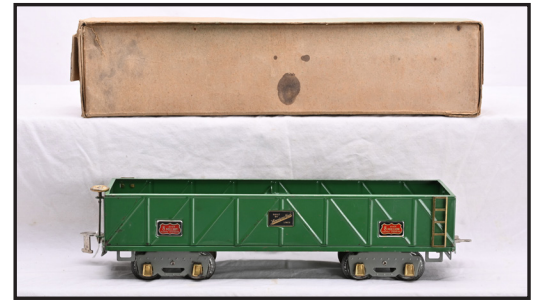
2416

American Flyer prewar narrow or wide gauge 2043 train control semaphore with 4181 blue die-cast controller with original cardboard insert. The semaphore has a green die-cast base and top with finial, brass pole, red ladder and arm, C7.



2417

American Flyer prewar wide gauge very scarce and unusual 4696 die-cast brass piper engine and tender combo consisting of a 4695R/C black 4-4-2 steam loco with nickel trim on the top and boiler front, brass and copper trim and turquoise striping and a 4693 American Flyer Lines Vanderbilt style tender with gray fixed trucks, brass trim and journals. The loco is missing one set of front steps. The tender has a slight warp but is intact. The loco and tender are C7. The loco and tender are in OBs that have no split corners but have some staining.



2418

American Flyer prewar wide gauge 4017 green sand car with four OVER 8 MILLION HAPPY OWNERS plates, brass trim and journals and gray set trucks in OB. The car is C7. The OB is complete.



2419

American Flyer prewar wide gauge 4006 red hopper with gray set trucks, brass trim and journals. The hopper is C7-8.



2420

American Flyer prewar wide gauge 4010 yellow tank with dark blue frame, bands and platforms gray flex trucks, all brass trim and journals, four brass American Flyer Tank Lines plates, C7-8.



2421

American Flyer prewar wide gauge 4018 automobile car with Rookie Tan body, turquoise roof, doors and door guides. gray set trucks, OVER 8 MILLION HAPPY OWNERS PLATES, brass trim and journals. The car is C7-8.



2422

American Flyer prewar wide gauge 4021 red caboose with gray set trucks, OVER 8 MILLION HAPPY OWNERS plates, brass trim and journals. The caboose has one paint chip on one side, otherwise is C7-8.



2423

American Flyer prewar wide gauge The Statemans orange lithographed passenger set no. 1423, circa 1929. The set contains the following; 4653 New Haven box cab electric 0-4-0 loco with black frame that has sand domes on end, red windows, brass and nickel trim two 4141 Bunker Hill Pullmans and a 4142 York Town observation car. The cars have gray flex trucks, brass journals and air tanks. Except for a few nicks the set is 8.



2424

American Flyer prewar O gauge 2230 or wide gauge 4230 die-cast roadside flashing signal. The signal has a tan base and green head with nickel trim. The signal is broken and has some repairs. Please view photo to verify condition.



2425

American Flyer prewar wide gauge desirable and harder to find the New Minute Man two-tone Rolls Royce blue passenger set no. 1493, circa 1932-34 in individual OBs. The set contains the following; 4696 loco/tender combo consisting of a 4695RC black 4-4-2 steam piper loco with brass and copper trim and turquoise striping and a 4693 American Flyer Lines Vanderbilt type tender with brass trim, nickel flex trucks and brass journals, 4390 Academy Club car, 4391 Pullman and a 4392 Army Navy observation car. The cars have PRESIDENTS SPECIAL plates above the windows, nickel flex trucks, brass trim, trusses and journals. The paint and trim on this set is very clean There are a few minor nicks on the set and is a very strong C7-8. The boxes are complete.



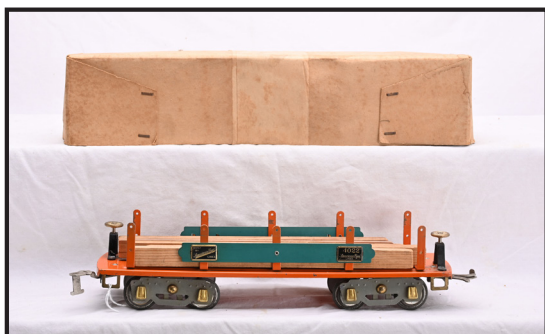
2426

American Flyer prewar wide gauge 4116 automatic danger signal. The signal has a red round base, orange pole and gold painted finial in OB, C7-8. Also included are 2011 olive green single arm manual semaphore in an OB and a 4015 automatic semaphore with orange base and pole, red ladder and gold painted finial with box lid only with label intact. The 2011 is C7 and the 4015 is C6. The 4116 box is complete with label fully intact. The 2011 box has an original cardboard insert and is complete.



2427

American Flyer prewar wide gauge 4694 die-cast loco/tender combination consisting of a 4692 black steam 4-4-2 loco with brass and copper trim using an Ives 1134 casting and an Ives die-cast tender with eight-wheel black flex trucks, brass and copper trim, black and gold GOLDEN STATE plates and brass journals, Circa 1929. The loco has been rewheeled. The die-casting on the loco and tender are solid and intact. Loco and tender are C7-8.



2428

American Flyer prewar wide gauge 4022 orange machinery car with turquoise side bars, gray flex trucks, brass trim and journals. Included with the car is an original wood load and a box lid ONLY. The car is C7



2429

American Flyer prewar wide gauge 4017 orange sand car with brass trim, journals and gray flex trucks, in OB. Sand car is C7. The box is complete.



2430

American Flyer prewar wide gauge 4018 automobile car with Rookie Tan body, turquoise roof and doors, black door guides, brass trim and gray flex trucks with brass journals. The car is C7-8.



2431

American Flyer prewar wide gauge 4010 cream tank car with dark blue frame and platforms. The tank has two brass plates on each side that read AMERICAN FLYER TANK LINES and 4010. The car has brass bands, ladders and trim with gray flex trucks that have brass journals. The car is C7.



2432

American Flyer prewar wide gauge harder to find 108 signal tower house with red base, brown lower body, Rookie tank upper body, green roof and maroon chimneys in OB with an original cardboard insert. There is an instruction label which is intact on the underside of the tower. The roof is a C6-7 and the rest of the station is C7-8. The box is split on one side and is complete with all flaps.



2433

American Flyer prewar wide gauge 108 switch tower with orange base, green lower body, Rookie tank upper body, red roof and green chimneys. There is an instruction label which is intact on the underside of the tower. The tower is C7.



2434

American Flyer prewar wide gauge two-tone red passenger cars with brass trim, AMERICAN FLYER LINES plates above the windows, gray set trucks with brass journals and gray trusses in OBs including; three 4331 Pullmans and a 4332 observation car. The paint and trim are clean, cars are C7-8. The OBs are complete with no split corners.



2435

American Flyer prewar wide gauge 2050 Old Glory flag pole and flag with blue die-cast base, original eagle and flag. The die-cast base is solid and intact. The pole and flag are C6-7.



2436

American Flyer prewar wide gauge very unusual lithographed passenger set in green and red Christmas colors. The set contains the following; 4644 with brass trim and black frame, two 4151 Pullmans and a 4152 observation car. The green cars have red roofs, red and gold details, AMERICAN FLYER LINES above the windows and EAGLE under the windows on both sides and brass journals and air tanks. One Pullman has gray set trucks. The other Pullman and observation car have gray flex trucks. The set is C7-8.



2437

American Flyer prewar wide gauge lithographed no. 100 passenger station with dark green base and maroon roof, circa 1922-23. The orange doors are punched out. The station roof is C6 and the station is C7.



2438

American Flyer prewar wide gauge glossy black 4692 loco black 4-4-2 steam loco with brass and copper trim and turquoise striping and a 4693 Vanderbilt tender with red and brass AMERICAN FLYER LINES plates numbered 4694, nickel flex trucks and brass journals. The loco and tender are C7-8.



2439

American Flyer prewar wide gauge two 2210 double arm lamp posts with a green rectangular bases, gray sub bases, orange poles and lamp shades missing the finials and a 2210 double arm lamp posts with gray rectangular base and sub base, orange pole and lamp shades and a gold painted finial. The lamp post with the finial is C7-8 and the other two are C7.



2441

American Flyer prewar wide gauge 4020 two-tone Rolls Royce blue stock car with black door guides, brass trim and gray flex trucks that have brass journals. The car is C7-8.



2440

American Flyer prewar wide gauge 4006 red hopper with gray flex trucks, brass trim and journals. The hopper is C6.



2442

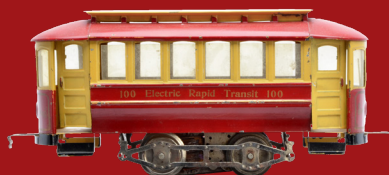
American Flyer prewar wide gauge 4011 two-tone red caboose with OVER 6 MILLION HAPPY OWNERS plates, brass trim, plates and journals and gray flex trucks, C7.

STOUT AUCTIONS

Toy & Train Specialists



The Jerry Poch
Train Collection
Session 9



Stout Auctions
2884 Mercer-West Middlesex Rd
West Middlesex, PA 16159
(724) 528-1500
katy@stoutauctions.com