



The Jerry Poch Train Collection

Session 5
Prewar American Trains

February 22nd, 2025

Stout Auctions of West Middlesex, PA is honored to present session one of the All Time Greatest Auction Series of quality, rare and diverse trains from the incredible Jerry Poch collection.



Please plan to attend this outstanding sale or join online at www.stoutauctions.com.

The sale will begin at 10AM ET.

Stout Auctions
2884 Mercer-West Middlesex Rd
West Middlesex, PA 16159
(724) 528-1500
katy@stoutauctions.com





2001

Ives prewar O gauge red lithographed eight-wheel merchandise cars including; 64386 New York New Haven and Hartford Railroad with a light gray and a 85829 Erie with a dark gray roof. The cars are C7-8.



2004

Ives prewar O gauge lithographed eight-wheel freight cars with T trucks including; 64 white Union Line merchandise car with red trim and white lithographed roof with red catwalk and a 37158 off-white C.B. and Q. refrigerator car with gray roof. The cars are C6.



2002

Ives prewar O gauge red lithographed eight-wheel merchandise cars including; 64385 Baltimore and Ohio R.R. with dark gray roof and a 151370 Rock Island CRI and P with a light gray roof. The cars are C6-7.



2005

Ives prewar O gauge The White Owl lithographed passenger set no. 502, circa 1927 in a damaged set box. The set contains the following; 3259 electric loco with brass trim, 551 Chair car, 552 Parlor car, a 558 observation car and a no. 204 red 75-watts transformer. The four-wheel cars have red roofs and black frames. The set is C7-8. The set box has most of the lid missing and has original cardboard inserts



2003

Ives prewar O gauge yellow lithographed eight-wheel merchandise cars including; 67389 Atlantic Coast Line with light gray roof and a 641506 Illinois Central Railroad with dark gray roof, C7.



2006

Ives prewar O gauge two no. 600 white single lamp posts. Two terminals have been added to one of the lamps. The lamp posts are C6.



2007

Ives prewar O gauge 3238 black cast iron, silver rubber-stamped 2-4-2 electric loco with red trim. The hood on both ends of the engine have been repainted. The rest of the engine is C7.



2008

Ives prewar O gauge lithographed clockwork The Pueblo freight set no. 37, circa 1930 in set box. The set contains the following; 176 black 0-4-0 cast iron clockwork loco, no. 12 four-wheel tender, 551 green Parlor car with red frame and roof and a 558 red observation car with black frame and blue roof. Also included is an extra 551 green Parlor car with red frame and roof. The 551 cars are actually numbered 62 and the 558 car is actually numbered 68. There is an individual kit box and a tender box. The loco and tender are C8 and the cars are C7-8. All of the boxes show wear.



2009

Ives prewar O gauge no. 20 black cast iron clockwork 0-4-0 steam loco with red and gold trim, early version with a lithographed number plate and a 25T lithographed eight-wheel Limited Vestibule Express tender. Except for a couple of minor nicks the loco is C8. The tender is C7.



2010

Ives Prewar O gauge Greyhound passenger set no. 507, circa 1926-27 including; 3257 electric loco with brass plates and trim, two 141 Pullmans and a 142 observation car. The eight-wheel cars have brass plates, window inserts and journals. The set is C7-8.



2011

Ives prewar O gauge no. 69 eight-wheel dark green flatcar with wood load and T trucks. The car is C7-8.



2012

Ives prewar O gauge 66 eight-wheel lithographed orange Tank Line tank car with dark green frame and T trucks. The car is C7.



2013

Ives prewar O gauge no. 67 eight-wheel lithographed white and red Pennsylvania Lines caboose with dark green frame, red roof and T trucks, C7.



2014

Ives prewar O gauge 3200 olive green cast iron 0-4-0 electric loco with raised letters, red and gold trim, circa 1912, C7.



2015

Ives prewar O gauge passenger set no. 0, circa 1901-02 in set box with original cardboard dividers. This is one of the earliest sets and smallest set from the first year of track trains. The set contains the following; no. 0 black tin clockwork steam loco with original key and gold painted trim, no. 1 four-wheel black tender with gold painted trim, no. 51 hand painted red coach with no vestibule and six curve track sections. The loco, tender and car have red painted cast iron wheels. The loco and tender are C7 and the car is C6. The box lid has been professionally repaired and label is intact with nice color graphics. There is an original label on the inside of the set box lid. This is an extremely rare set to find complete and in this condition and was originally in the Bill Koteck collection and was owned by John Schleicher.



2016

Ives prewar O gauge 140 lithographed crossing gate, circa 1906-08 for clockwork only. The crossing gate has a crossing shanty with cast iron door frame. The fencing on the crossing gate has two repairs, C6-7.



2017

Ives prewar O gauge no. 800 clockwork lithographed yellow trolley, circa 1908 with original key, black and red trim, frame with cross hatching and red spring detail and gray roof. The LOCAL SUBURBAN SERVICE appears above the windows and TROLLEY appears below the windows. The trolley is C6.



2018

Ives prewar O gauge lithographed Limited Vestibule Express passenger set, circa 1905-07. The set contains the following; clockwork 2-2-0 steam loco with a blue boiler, two windows and lithographed cab roof, no. 1 red and black four-wheel F.E. no. 1 tender with cross hatching on the front of the floor and red spring details, no. 50 United States Mail baggage car and a no. 51 Iroquois passenger car. The four-wheel cars are red with black details, red spring details, black roofs and vestibules. The engine and tender are C6-7. The cars are C7.



2019

Ives prewar O gauge uncataloged no. 55 four-wheel iridescent yellow lithographed Live Stock Transportation car with green lettering and roof and red and black spring detail, circa 1908, C6.



2020

Ives prewar O gauge the Black Diamond Express passenger set no. 579R, circa 1930 in individual OBs and set box. This set contains the following; 1122R red die-cast steam loco with brass trim and boiler front, 25 red die-cast The Ives Railway Lines tender painted gold on the side frame, brass trim and journals, two 141 Parlor cars and a 142 observation car. The passenger cars are black with red roofs and trucks, brass inserts, plates and journals and Pullman plates above the windows. The die-casting on the loco and tender are solid and intact. The loco and tender are C6. The cars are C7. The individual OBs are missing some flaps and show wear. The set box is complete with some clear tape. Also included with the set are three original track boxes ONLY with no track.



2021

Ives prewar O gauge eight-wheel lithographed merchandise cars with brass journals; 64158 orange Lehigh Valley Railroad with red roof and a 85829 red Erie with a red roof. The 85829 Erie is C6 and the 64158 car is C7.



2022

Ives prewar O gauge uncataloged white lithographed Sears Set, circa 1910 in set box that has original cardboard inserts. The set contains the following; 1502 clockwork cast iron 2-2-0 steam loco with raised lettering and gold trim, four-wheel red and black F.E. no. 1 tender with olive green frame, no. 150 baggage car, 151 Brooklyn coach, 152 Buffalo coach, eight curve track sections and two straight track sections. The four-wheel cars are white with red and black details, olive green frames and gray roofs. The baggage car and Brooklyn car have Limited Vestibule Express above the windows and the Buffalo car has The Ives Railway Lines above the windows. The cars have with floor train bases and track wheels. The engine and tender are C7. The car roofs are C6 and the car bodies are C7. The set box has a Sears Roebuck shipping label and box is complete.



2023

Ives prewar O gauge four-wheel lithographed no. 51 brown Limited Vestibule Express Iroquois chair car with orange and black details, black roof, red and black lithographed vestibules and cream spring detail and cross hatching on the frame, circa 1902-05. The car is C6-7.



2024

Ives prewar O gauge no. 51 yellow lithographed Limited Vestibule Express Iroquois coach with a black roof, circa 1906-08. The four-wheel car has red and black striped vestibules, cross hatched frame and cream lithographed spring detail on the frame. The car is missing both couplers and is C6-7.



2025

Ives prewar O gauge passenger set no. 1616, circa 1932 in individual OBs. The set contains the following; 1694 beige 4-4-4 electric loco with maroon roof and frame and red lettered brass plates and trim, 1696 baggage, 1695 Pullman and a 1697 observation car. The beige cars have maroon roofs, buff inserts and six-wheel trucks with copper journals. The set is C7-8. The boxes are complete with all flaps.



2026

Ives prewar scarce and unusual original dealer orange box complete with 10 14-volt clear replacement bulbs. The bulbs were never used, C8-9. The dealer box has the original cardboard insert and has one split corner on the lid.



2027

Ives prewar O gauge lithographed Limited Vestibule Express passenger set containing the following; no. 1 cast iron clockwork 2-2-0 steam loco with red and gold number plate, four-wheel black and red F.E. no. 1 tender with crossing hatching on the floor and red spring details, no. 51 translucent green Brooklyn coach and a no. 52 black and gold Buffalo coach. The four-wheel cars have black roofs, red spring details and striped vestibule floors. The set is C6-7.



2028

Ives prewar O gauge very scarce no. 11 four-wheel red and black lithographed Chicago Flyer tender, circa 1908. The tender has cross hatching on the floor and red spring details. The tender is C6.



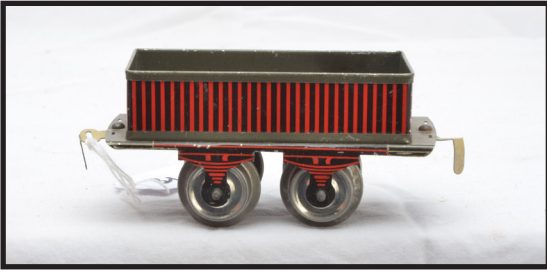
2029

Ives prewar O gauge no. 1117 black cast iron electric steam loco with red trim stack and steam chest, red and gold cab roof trim and yellow and black number plate under the cab window and a no. 11 four-wheel lithographed L.V.E. tender with a green frame, circa 1911-12. The loco and tender are C7.



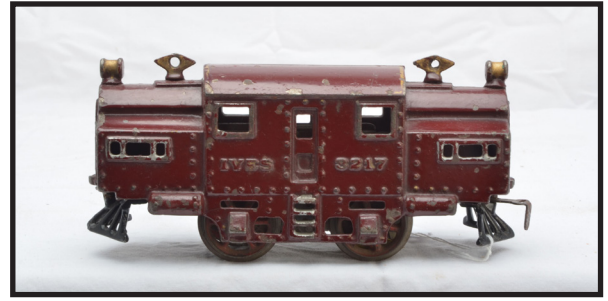
2030

Ives prewar O gauge scarce and desirable Wanamaker Railway Lines mahogany brown passenger set, circa 1924. The set consists of a 3250 electric 0-4-0 loco with orange window trim, no. 550 Express Service baggage car, 551 chair car and a 552 parlor car. The four-wheel cars have orange trim. The 552 has paint flaking on one side and is C5. The rest of the set is C6.



2031

Ives prewar O gauge no. 54 four-wheel lithographed gravel car, circa 1908-09 with lithography on the ends of the frame, vertical cherry red and black striping and red lithographed spring detail on the frame. The car is C7.



2034

Ives prewar O gauge 3217 maroon electric loco with raised letters, circa 1912. The loco has replaced pilots and a new pick up assembly. The loco is C6.



2032

Ives prewar O gauge lithographed freight set no. 1615, circa 1932. The set contains the following; 258 black steam 2-4-0 loco with brass and copper trim and red striping, 1663T eight-wheel Ives Lines tender with brass and copper trim and copper journals, 1707 brown gondola, 1708 green stock car with tan doors and door guides, 1709 green boxcar with blue roof, orange doors and door guides, 1712 red caboose with maroon roof. The eight-wheel freight cars have copper journals. The set is C7-8.



2035

Ives prewar O gauge cream lithographed Limited Vestibule Express passenger set containing the following; no. 17 clockwork cast iron 0-4-0 steam loco with number plate under the cab window, L.V.E. no. 11 four-wheel red and black lithographed tender with cross hatching on the floor and red spring details, 60 baggage car, 61 Empress chair car and a 62 Princess Parlor car. The four-wheel passenger cars have red details, cross hatched floor bases and frames, red spring details and black roofs. The baggage and tender are C5. The rest of the set is C7.



2033

Ives prewar O gauge no. 63 four-wheel lithographed butterscotch gravel car with vertical striping, circa 1904-06. The car has red lithographed spring detail on the frame. The car is C6-7.



2036

Ives prewar O gauge no. 66 four-wheel grayish green Tank Line tank car, early version with cross hatching on the frame and red spring details. This car was never pictured in a catalog. The car is C6.



2037

Ives prewar O gauge no. 65 four-wheel gray lithographed live stock transportation car with striped doors and roof, circa 1908-09. The car has a cross hatched frame with red and black spring details. The car is C5. Also included is a damaged box.



2038

Ives prewar O gauge no. 63 four-wheel lithographed blue and gray striped gravel car, circa 1907-08 with cross hatched floor, copper inside the body walls, cross hatched frame and red lithographed spring detail on the frame. The car is missing a brake wheel. The car is C6-7



2039

Ives prewar O gauge no. 126 four-wheel lithographed Fast Freight caboose, circa 1904-06 with original matching doors, blue/gray striped body and cupola, butterscotch striped roof and red lithographed red spring detail on the frame. The caboose is C6.



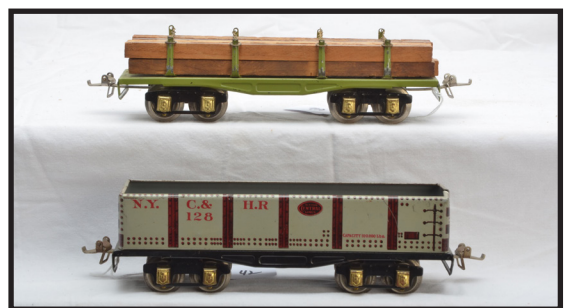
2040

Ives prewar O gauge desirable rose lithographed Limited Vestibule Express passenger set including; 17 black cast iron clockwork 0-4-0 steam loco with gold trim, no. 11 black and red L.V.E. four-wheel tender with a green frame, no. 60 baggage car with a red and gray roof and green frame, no. 61 Yale chair car and a 62 Harvard parlor car. The cars have eight-wheel T-trucks. The trucks on the 61 and 62 cars are the lacquered version and the trucks on the baggage car are black. The 61 and 62 cars have gray and green roofs and gray frames. The set is C7.



2041

Ives prewar O gauge 1122 die-cast black 4-4-2 electric steam loco with brass and copper trim and a no. 25 eight-wheel die-cast The Ives Railway Lines tender with brass trim and journals. The loco and tender are C7.



2042

Ives prewar O gauge 123 green lumber car with load and a 128 gray lithographed N.Y.C. and H.R. gravel car. The eight-wheel cars have brass journals. The cars are C7-8.



2043

Ives prewar O gauge lithographed eight-wheel freight cars with brass journals including; 125 gray Union Lines Merchandise Car Pennsylvania Lines with red roof and an orange 127 Live Stock Transportation car with a red roof. The cars are C7-8.



2044

Ives prewar O gauge eight-wheel freight cars with Lionel bodies, brass trim and journals including; 122 yellow tank that has an 815 Lionel tank body and a 121 red caboose with peacock cupola and orange windows that has an 817 Lionel body. The cars are C7.



2045

Ives prewar O gauge uncataloged Montgomery Ward Black Vagabond Passenger set, circa 1930 in individual boxes and set box. The set contains the following; 1125 black cast iron 0-4-0 electric steam loco with instruction tag, 17 four-wheel tender with Ives decal, 130 Buffet car, 129 Saratoga coach, 132 observation car, 203 50-watts transformer, kit box with contents, two boxes of four each curve track sections and one box of four straight track sections. The eight-wheel passenger cars are orange lithographed with brown details and brass journals. The set is C7-8. The boxes have original wraps and the loco box has an original cardboard tray. The individual OBs have most all flaps with some detached but include. The set box is complete.



2046

Ives prewar O gauge no. 115 lithographed freight station with platform and ramp. The station has glue and gray striped walls, cast iron chimney top, red diamond patterned roof, floor and doors and two riveted plates on each side, one that reads FREIGHT and one that reads STATION. The station is C5-6.



2047

Ives prewar O gauge cream lithographed passenger set no. 22R, circa 1904-06. The set contains the following; 25 clockwork cast iron 4-4-0 steam loco with gold and red trim and six boiler bands, a no. 11 red and black lithographed L.V.E. four-wheel tender with cross hatching on the floor and red and black spring detail and cream lithographed Limited Vestibule Express eight-wheel in board trucks, passenger cars with black roofs and silver clerestories including; 130 New York Baggage/Buffer car and a 129 Philadelphia Parlor car. The set is C5-6.



2048

Ives prewar O gauge 115 lithographed Freight Station with butterscotch walls and base floor, lithographed single plate on each side, raised platform and ramp, diamond patterned red roof and cast iron chimney top. The station is C6-7.



2049

Ives prewar O gauge the Oriole Special orange passenger set no. 456R, circa 1928. The set contains the following; 3257 electric 0-4-0 electric loco with brass trim, two 143 Parlor cars and a 144 observation car. The eight-wheel cars have black vestibules and trucks, brass trim and journals. The set is C5.



2050

Ives prewar O gauge lithographed freight set Special T 2 in individual OBs and set box. The set contains the following; 257 black 2-4-0 steam loco with brass and copper trim and orange striping, 257T Ives Lines four-wheel tender with orange striping, brass trim and nickel journals, 1677 peacock gondola, 1679 cream boxcar with blue roof, orange doors and tan door guides, 1680 Ives Tank Lines tank car with copper trim, a 1682 red caboose with brown roof and a box of track accessories. The eight-wheel freight cars have copper journals. Also included is a tube of lubricant with an instruction sheet. The engine has been rewheeled. The set is C8. The individual OBs are complete with most flaps with tape repair. The set box is repaired but the label is mostly intact.



2051

Ives prewar O or 1 gauge 109 lithographed manually operated double arm semaphore with red diamond base, blue and white supports and gray diamond upper platform. The semaphore is C5.



2052

Ives prewar 1 gauge lithographed passenger set no. 1130X, circa 1915-19. The set contains the following; 3239 gray cast iron 0-4-0 electric loco with silver stampings and red trim, no. 71 New York and Chicago Buffet/Baggage car and two no. 72 Chicago Pullmans. The brown passenger cars are the low-sided versions. with red, gold and yellow details, gray and light green roofs. The set is C7-8.



2053

Ives prewar O or 1 gauge desirable 122 lithographed station with glass domed platform which consists of a 116 lithographed Grand Central Station with a V-shaped bay and a 121 platform with one bench. The station has cast iron window and door frames and chimney tops. The dome consists of 12 glass panels. One of the green glass panels is cracked. The station and platform are C6.



2054

Ives prewar 1 gauge 2nd series no. 40 cast iron mechanical steam 4-4-0 loco with nickel, gold and red trim and black name plate with white IVES NO. 40 lettering under the cab windows and an eight-wheel tender with 2nd series trucks and unusual no. 40 Ives silver rubber-stamping. The loco and tender are C6-7.



2055

Ives prewar 1 gauge scarce no. 77 gray lumber car with red stakes and wood load. The car has no brake wheels, trucks are held on by rivets and have red trim. The car is C6.



2058

Ives prewar 1 gauge no. 74 white lithographed Live Stock Transportation stock car with gray frame and green roof. The car has no brake wheels. The trucks are held on by rivets and have red trim. Car is C6-7.



2056

Ives prewar 1 gauge scarce no. 76 white lithographed Fast Freight gravel car with red details and gray frame. The car has no brake wheels. The black trucks are held on by rivets and have red trim. The car is C6.



2059

Ives prewar 1 gauge no. 75 white lithographed Fast Freight Line caboose with red details, gray frame, red roof and green doors. The car has no brake wheels. The trucks are held on by rivets and have red trim. The cupola roof is missing, otherwise the caboose is C6.



2057

Ives prewar 1 gauge scarce no. 73 white lithographed Fast Freight Line General Merchandise Car with red details, gray frame, red and black striped roof and green doors. The car has no brake wheel. The black trucks are held on with rivets and have red trim. The car is C6.



2060

Ives prewar 1 gauge scarce and desirable mechanical straw yellow lithographed passenger set no. 44 circa 1906. The set contains the following; first series no. 40 cast iron clockwork steam 4-4-0 loco with nickel, red and gold trim, no. 40 eight-wheel T.C.L.E. tender with red and gold trim, 70 baggage. 71 Saint Louis combine and a 72 San Francisco coach. The eight-wheel cars have black roofs and painted clerestories. The cars are lettered TWENTIETH CENTURY LIMITED EXPRESS above the windows. The black trucks have red trim. The set is C7. Also included is a custom made set box.



2061

Ives prewar O or 1 gauge no. 114 lithographed passenger station, later version with punched doors, blue and tan patterned roof and green and white patterned base. The station has Ticket Office on the sides and R.R. Station at each end. The station is C7-8.



2064

Ives prewar 1 gauge brown lithographed passenger set no. 44 containing the following; no. 40 2nd series black mechanical 4-4-0 steam engine with Ives no. 40 plates under the cab windows, nickel red and gold trim, no. 40 T.C.L.E. eight-wheel tender, no. 70 New York and Chicago baggage express car, no. 71 New York and Chicago Buffet car and a no. 72 Chicago Pullman. The eight-wheel high-sided brown lithographed passenger cars have gold, yellow and red details, gray and red roofs, black trusses and black trucks with red trim. The cars are all lettered TWENTIETH CENTURY LIMITED above the windows. The set is C7-8.



2062

Ives prewar 1 gauge 3240 gray cast iron 0-4-4-0 electric loco, circa 1917-20 with black cast iron frame, nickel trim, red doors and window trim and silver rubber-stamped lettering and numbering, C7.



2065

Ives prewar wide gauge 226 The Ives Railway Lines station which used the Lionel 126 station. The station has a Mojave base, maroon walls, pea green roof, window and door inserts, ivory window and door frames, brick lithographed chimneys and brass plates, C7-8.



2063

Ives prewar 1 gauge 101-1 lithographed bridge for mechanical track with center viaduct section with railings and two approaches. The center section and two approaches measure 42-inches long. One of the approaches has repairs and bridge is C6.



2066

Ives prewar wide gauge dark olive green passenger set no. 700 in set box that has original cardboard dividers. The set includes a 3241 electric loco with a black cast iron frame, gold N.Y.C. and H.R. rubber stamping, nickel and red trim 184 Buffet, 186 observation car, eight curve track sections and two straight track sections. The set is C7-8. The OB is complete with two split corners. The label is intact.



2067

Ives prewar wide gauge 334 crossing gate with maroon shack that has brass windows in an OB. The crossing gate is Lionel production and has a maroon base and green and white gate. The crossing gate is C7-8. The box shows wear.



2070

Ives prewar wide gauge freight set no. 1075R, circa 1930 in individual OBs with set. box. This set contains the following; 1134R black die-cast 4-4-2 steam loco with brass trim, 40T die-cast The Ives Railway Lines tender with brass trim and journals, 192 yellow merchandise car with peacock roof and black door guides, 198 black gravel car, a 195 red caboose with maroon roof, peacock cupola roof and yellow windows, two boxes of four each curve track sections, two boxes of four each straight track sections, track kit box with track clips, controller and an instruction booklet. All of the freight cars were made using Lionel 200-series freight car bodies and have brass trim and journals. The die-casting on the loco and tender is intact, however the loco has some dimpling. The loco has been rewheeled. The set is C7. The engine has an original cardboard insert. There is a original wrap included also. The individual OBs have most flaps attached some with tape repair. The set box has three split corners and shows some wear.



2068

Ives prewar wide gauge Cadet Blue passenger set no. 1048R, circa 1928. The set contains the following; 3245R St. Paul type 4-4-4 electric loco with short cab and brass trim, 187 Club car, 188 Parlor car and a 189 observation car. The cars have orange transoms, brass trim, air tanks and journals and Pullman plates above the windows. The engine is C7 and the cars are C7-8.



2071

Ives prewar wide gauge no. 302 double arm semaphore with dark green cast iron base and ladder and a white pole, C6.



2069

Ives prewar O or wide gauge 332 railroad crossing warning bell signal version with bell mechanism mounted in the middle of the cross buck and bell dome extended below the cross buck, circa 1930. The signal has a maroon cast iron base and brass cross buck with black lettering. The signal is C7-8.



2072

Ives prewar wide gauge mahogany brown Wanamaker Railway Lines passenger set, circa 1924 including; 3235-R electric 0-4-0 loco with black cast iron frame and gold stamped Wanamaker Railway Lines, 184-3 Buffet and a 186-3 observation car. The cars have gold stampings and Wanamaker Railway Lines on the sides of the cars. The set is C6-7.



2073

Ives prewar wide gauge no. 89 water tower deluxe version with a 438 Lionel signal tower base, circa 1930. The tower has a green base, black tower, red tank platform, yellow tank, blue roof, original weight and spout. The ladder is missing from the tower. The tower is C6.



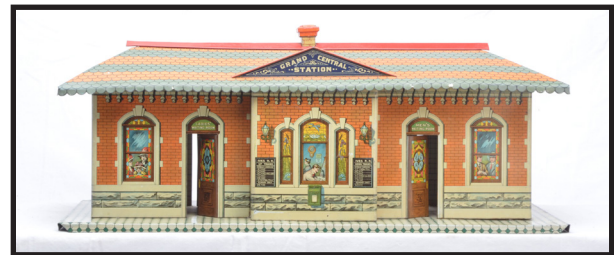
2076

Ives prewar wide gauge President Washington olive green passenger set no. 705, circa 1927. The set contains the following; 1134 cast iron 4-4-0 loco, 40 eight-wheel steel tender, 184 club car, 185 parlor car and 186 observation car. The loco has a cast iron boiler with engineer in cab window. The loco is gold-stamped PRESIDENT WASHINGTON and IVES 1134R below the cab windows. The tender is gold-stamped IVES B. AND O.R.R. on sides. The tender and passenger cars all have brass journals. Passenger cars have brass plates with black lettering. The engine has been rewheeled. The set is C5-6.



2074

Ives prewar wide gauge orange and black passenger set no. 1082, circa 1929. The set contains the following 3236 black 0-4-0 electric loco with orange frame and brass trim, 184 baggage/Club car, 185 Parlor car and a 186 observation car. The orange cars have black roofs, brass plates and trim and journals. Each car has a brass plate above the windows which reads PULLMAN. The wheels on the loco are starting to deteriorate. Set is C6-7.



2077

Ives prewar wide gauge 116 tin lithographed Grand Central Station with four-part roof and cast iron chimney top, circa 1910-13. The roof is missing one wire bracket. The station is C7-8.



2075

Ives prewar wide gauge no. 301 double semaphore with red cast iron base, black pole, orange ladder and black finial, C6.



2078

Ives prewar wide gauge no. 193 olive green Live Stock car with maroon roof and brass journals in OB, C6. The box is complete but shows wear.



2079

Ives prewar wide gauge no. 194 black Penna. Coal and Coke Co. Coal car with red details and brass journals, circa 1928 in OB, C7. The box is complete.



2080

Ives prewar wide gauge unusual transition apple green passenger set, circa 1931. The set contains the following; 1134 die-cast 4-4-2 steam loco, 390TX The Ives Railway tender with 200-series trucks with orange striping, brass trim and nickel journals, 419 baggage/Parlor, 418 Parlor, 431 Dining Car and 490 observation car. The apple green cars have red inserts, maroon doors and nickel journals. These are Lionel cars with Ives decals over the windows, Lionel six-wheel trucks and couplers. All four cars and the tender have a white label pasted on the car bottoms which reads Manufactured by The Ives Corporation, Irvington, NJ. All decals are intact and cars have strong stampings. The loco is C7. Except for a few minor nicks the cars and tender are C8. This is a very unique set and has shown up a couple of times with this configuration of an 1134 loco, a 390TX tender and 400-series apple green passenger cars.



2081

Ives prewar wide gauge Bridgeport production 199 derrick car with peacock blue cab, red roof, boom and window inserts, three brass knobs, plates and journals, circa 1929. The car is rubber-stamped 199 on both sides under the windows. Ives sold these cars using a Lionel 219 derrick car body mounted on Ives trucks and couplers. The car is C5.



2082

Ives prewar wide gauge Lionel Irvington production 199 derrick car with peacock blue cab, dark green roof, red boom, brass knobs, trim and plates and copper journals, circa 1931. Ives sold these cars using a Lionel 219 derrick car body with Lionel 200-series trucks. The car is C7.



2083

Ives prewar wide gauge 255 or 1867 signal tower with Mojave base, pea green tower and roof, cream upper base and orange upper walls. The tower has brass plates and ladder. Ives took the Lionel 438 signal tower body and added The Ives Railway Lines plates. The roof has paint flaking and is C6. The rest of the tower is C7.



2084

Ives prewar wide gauge no. 1134R red die-cast 4-4-2 red steam loco with a brass boiler front with hooded headlight and a no. 40 Ives Railway Lines tender with red trucks, brass trim and journals from the 1079R National Limited passenger set, circa 1930. The engine is original except for the fire box sides which have been repainted. The engine has been rewheeled and valve gears have been replaced. The engine has some paint flaking and is C5. The tender has been professionally restored and looks like new.



2085

Ives prewar wide gauge desirable passenger cars from the 1079R National Limited passenger set, circa 1930 including; 246 Dining car, 247 Club car, 248 Pullman and a 249 observation car. The passenger cars are blue with red roofs and trucks, yellow window inserts, red trucks, brass air tanks and brass journals. The decals on the cars are intact. The roofs on the cars are C5 except for the 246 Dining car which is C6-7. The car bodies are C6-7.



2088

Ives prewar wide gauge dark olive green passenger set no. 702, circa 1921-23 in set box with original cardboard inserts. The set contains the following; 3242 silver rubber-stamped N.Y.C and H.R. electric loco with nickel trim and black cast iron frame, 187 Buffet car, 189 observation car. The cars are stamped N.Y.C. and H.R. above the doors of the cars. The set is C7-8. The box lid has one split corner.



2086

Ives prewar wide gauge scarce one of the two original set boxes that was used for packaging the 1079R National Limited passenger set, circa, 1930. The set box has one top end flap that is half gone and has four split corners.



2089

Ives prewar wide gauge Bridgeport production 190 yellow tank with brass trim and journals and black frame, circa 1929-30 in OB. This is a very unusual car which contained parts from three different train manufacturers. The tank is from the Lionel 215 tank car, the frame is from American Flyer and the trucks and couplers are Ives. The car is C6-7. The box has some tape repair.



2087

Ives prewar wide gauge scarce no. 192 white Santa Fe Ventilator and Refrigerator car with maroon roof and brass journals, circa 1928 in OB. The roof on the car is C5 and the body is C7. The box lid has two split corners.



2090

Ives prewar wide gauge desirable 3245R black 4-4-4 electric loco with orange frame and all nickel plates and trim, circa 1929. The frame is painted black along the sides. This engine pulled the Olympian passenger set. The engine is C6.



2091

Ives prewar wide gauge desirable orange passenger cars with black roofs, brass trim and journals from The Olympian passenger set no. 1088/1088R, circa 1929 including the following cars; 241 Club car, 242 Parlor car and a 243 observation car. The passenger cars have American Flyer bodies with Ives trucks and couplers. The paint and trim on these cars are very clean. The cars have a few minor nicks and are C7-8. The condition of these cars is very high quality and one of the best examples we have seen.



2092

Ives prewar wide gauge no. 20-198 black gravel car with an American Flyer body fitted with Ives trucks and shortened snake pull couplers, circa 1929. The car has brass plates, trim and journals. The car is C7-8.



2093

Ives prewar wide gauge no. 20-190 orange tank with American Flyer body fitted with Ives trucks and shortened snake pull couplers, circa 1928. The car has all brass trim with black dome and platforms. The tank is C7.



2094

Ives prewar wide gauge desirable no. 20-192 Northern Limited pea green merchandise car with Cardinal red roof, American Flyer body fitted with Ives trucks and shortened snake pull couplers, circa 1928. The car has brass trim and journals and is C5.



2095

Ives prewar wide gauge no. 20-192 yellow merchandise car with blue-green roof, American Flyer body fitted with Ives trucks and shortened snake pull couplers, circa 1929. The car has brass trim and journals and is C6-7.



2096

Ives prewar wide gauge no. 20-193 Northern Limited pea green stock car with Cardinal red roof, American Flyer body fitted with Ives trucks and shortened snake pull couplers, circa 1928. The car has black door guides, brass trim and journals. Most of the paint is missing from one end and is C4-5.



2097

Ives prewar wide gauge no. 20-193 orange stock car with maroon roof, American Flyer body fitted with Ives trucks and shortened snake pull couplers, circa 1929. The car has brass trim and journals and is C7.



2098

Ives prewar wide gauge no. 20-195 caboose with dark red body, maroon roof, blue-green cupola and an American Flyer body fitted with Ives trucks and shortened snake pull couplers. The car has brass trim and journals, C6.



2099

Ives prewar wide gauge orange passenger set no. 704, circa 1921-24. The set contains the following; 3243 electric 4-4-4 N.Y.C. and H.R. rubber-stamped loco with nickel trim, green windows and black cast iron frame, 187-3 Buffet car, 188-3 Parlor car and a 189-3 observation car. The rubber-stamped cars have green window trim. The loco is C7-8 and the cars are C7.



2100

Ives prewar wide gauge scarce and desirable 196 Harmony Creamery Co. dark olive green flatcar with two white tanks, circa 1924. This was a promotional car produced for the Harmony Creamery Co. of Pittsburgh, Pennsylvania. The two white tanks are lettered Harmony Creamery Co. From the Country to You in Glass and MILK on each end of the tanks. This is one the hardest Ives freight cars to find, C6.



2101

Dorfan prewar narrow gauge blue and cream passenger set no. 245, circa 1929 in set box with original cardboard insert. The set contains the following; no. 55 die-cast 0-4-0 electric steam loco, six-wheel tender, 495 Boston Pullman, 495 Seattle Pullman, an 496 observation car. The blue green eight-wheel cars have cream window and door trim, nickel journals and figures in the windows. One of the side rods is broken off the wheel on the loco. The set is C5. The set box has four split corners and both labels are intact.



2102

Dorfan prewar narrow gauge deluxe mechanical lithographed Freight set no. 185, circa 1931 in set box with original cardboard inserts. The set contains the following; 157 black die-cast clockwork 0-4-0 steam loco with red, brass and nickel trim and key, four-wheel Dorfan tender, 600 yellow C.C.C. and StL New York Central Lines gondola numbered 14048, 604 red Indian Refining Co. tank car with nickel dome and a 606 four-wheel red Pennsylvania caboose numbered 486751 with no journals. The 600 and 604 eight-wheel cars have brass trim and journals. Also included are some track clips. The engine has paint touch up and the cowcatcher has been repainted, C5. The tender and cars are C7. The set box has three split corners.



2103

Dorfan prewar narrow gauge red lithographed passenger set no. 200. This set contains the following; no. 50 red-enameled die-cast 0-4-0 electric steam outline loco, type I four-wheel red tender with black frame, two 356 red four-wheel passenger cars with black frames. The loco has yellow die-cast wheels and DORFAN embossed on cab sides under windows. The cowcatcher on the loco has one small chip on the corner, otherwise the set is C7.



2106

Dorfan prewar narrow gauge no. 420 orange and black boulevard light. The lamp post is broken on the top of the arm and is C5. Also included are two 430 green and black lamp posts, one in an OB. One of the 430 posts is broken. The 430 lamp posts are C5. The box has one end flap detached.



2104

Dorfan prewar narrow gauge speedster wreck-train set no. 255, circa 1931 in set box with original cardboard inserts. The set contains the following; 55 black die-cast steam 0-4-0 loco with gold, brass and red trim, eight-wheel Dorfan tender, 609 black flatcar with red stakes and lumber load, 610 derrick with gray cab, green roof, red boom and nickel knobs and a 607 red Dorfan Lines caboose with green roof. The eight-wheel cars have brass journal. The loco is C6. The tender and cars are C7.



2107

Dorfan prewar narrow gauge lithographed Speed Demon Freight Express set no. 257, circa 1931. The set contains the following; 55 black die-cast 0-4-0 steam loco with brass, gold and red trim, eight-wheel Dorfan tender, 600 yellow C.C.C. and St L New York Central Lines gondola, 601 yellow NYC boxcar missing the journals, 604 red Indian Refining Co. tank car with nickel dome, 605 gray Pennsylvania coal car, 609 flatcar with red stakes, missing the load and a 607 red Dorfan Lines caboose with green roof. The eight-wheel cars have brass trim and journals, except for the 601 car which has no journals. The set is C6-7.



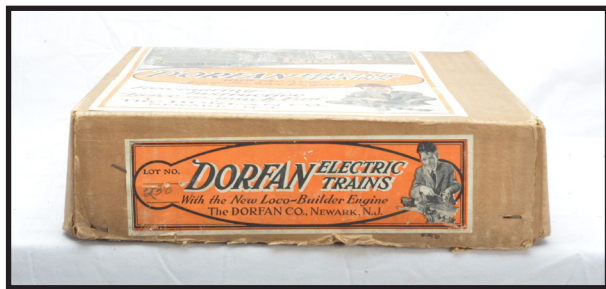
2105

Dorfan prewar narrow gauge Silver Blue Arrow passenger set no. 256, circa 1930. The set contains the following; no. 54 take-apart die-cast electric loco with brass trim, 496 Boston Pullman, 496 Seattle Pullman and a 497 observation car. The cars have red roofs and frames, brass journals and figures in the windows. The loco is C6 and the cars are C7.



2108

Dorfan prewar narrow gauge orange passenger set no. 225, circa 1929 containing the following; 51 die-cast 0-4-0 take-apart electric loco with yellow and nickel trim, 495 Boston Pullman and a 495 Atlanta Pullman. The eight-wheel cars have no journals and green doors. The loco has a small chip out of the roof near the headlight, otherwise the set is C-7.



2109

Dorfan prewar narrow gauge original set box ONLY for a 230 Western Special green passenger set. The set contained the following; 51 take-apart loco and two no. 490 Pullmans. The box is complete and both labels are intact.



2112

Dorfan prewar narrow gauge no. 53 green take-apart die-cast 0-4-0 electric loco with brass trim in OB, C7-8. The box is complete with all flaps and label is missing the top sections.



2110

Dorfan prewar narrow gauge no. 55 die-cast dark metallic maroon, catalogued as brown, 0-4-0 steam loco with yellow, nickel and brass trim and a six-wheel Dorfan Lines tender. The loco has paint touch up otherwise loco and tender are C7.



2113

Dorfan prewar narrow gauge three no. 496 crackle green Boston Pullmans with red roofs, nickel trim and journals and figures in the windows. The roofs appear to be repainted and look C8. One car body is C7 and two are C6-7.



2111

Dorfan prewar narrow gauge eight-wheel freight cars with brass trim and journals including; 600 C.C.C. and St. L New York Central gondola numbered 14048, 603 red Pennsylvania boxcar, two 604 Indian Refining Co. tank cars with nickel domes, one with a black ladder and one with a brass ladder, 605 gray Pennsylvania coal hopper and a 607 red Dorfan Lines caboose with green roof. The cars are C6-7.



2114

Dorfan prewar narrow gauge eight-wheel freight cars with brass trim and nickel journals including; 603 red Pennsylvania boxcar and a 607 red Dorfan Lines caboose with green roof and nickel end railings. Also included is a 604 eight-wheel red Indian Refining Co. tank car with nickel dome, brass trim and journals, eight-wheel 601 yellow NYC boxcar with black and nickel trim and no journals and a 606 four-wheel red Pennsylvania caboose with no journals. The 601 boxcar has some paint loss on one end of the roof. The cars are C6-7.



2115

Dorfan prewar narrow gauge original set box ONLY for a crackle green finish no. 285 Bar Harbor Express passenger set, circa 1929-30. This set contained the following; 53 electric loco, 492 baggage car, two no. 493 passenger cars and a 494 observation car. The box has heavy wear.



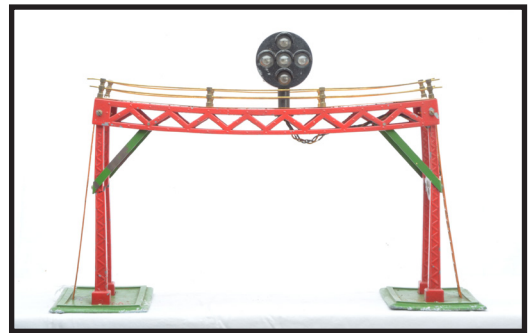
2118

Dorfan prewar wide gauge The Olympian passenger set no. 700, circa 1927 including; 3920 orange die-cast Loco-Builder 0-4-0 electric loco with green and brass trim and two orange lithographed no. 790 Pleasant View Pullmans with green roofs and window trim and sheet metal trucks. The loco has heavy paint touch up. The cars are C7.



2116

Dorfan prewar wide gauge red passenger set, circa 1928-29. The set contains the following; 3920 red die-cast Loco-Builder 0-4-0 electric loco with green windows and brass trim, no. 995 baggage car numbered 770, no. 994 Washington Pullman numbered 772 and a 996 observation car numbered 773. The cars have green doors and window trim, figures in the windows, die-cast wheels and trucks and nickel journals. The loco is C5. The cars are C7.



2119

Dorfan prewar narrow or wide gauge no. 418 die-cast signal bridge with one position light signal, circa 1930. All four legs on the bridge are broken and bridge has warpage, C4.



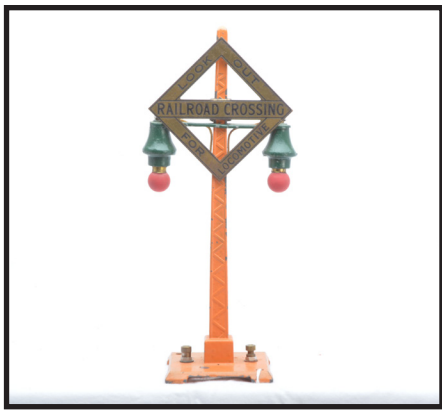
2117

Dorfan prewar narrow or wide gauge no. 419 die-cast signal bridge with two position light signals, circa 1930. The signal bridge has some warpage and some paint touch up. The bridge is C6.



2120

Dorfan prewar wide gauge The Floridian Colonial Ivory passenger set no. 897, circa 1930. The set contains the following; 3930 Crocodile electric loco 4-4-4 with Loco-Builder body, red roof, brass trim and plates missing one journal box, 998 American Railway Express baggage car numbered 770, 997 San Francisco Pullman numbered 771, 997 Washington Pullman numbered 997 that has a broken coupler and a 999 observation car numbered 773. The cars have red roofs, brass trim and journals, figures in the windows, die-cast wheels and trucks. The set has paint flaking and is C4-5.



2121

Dorfan prewar narrow or wide gauge 416/1416 die-cast warning signal with green base, orange pole and black lettered brass cross buck. The signal is C6-7.



2122

Dorfan prewar wide gauge green Palmetto Limited passenger set no. 915. The set contains the following; 3930 die-cast Loco-BUILDER Crocodile electric 4-4-4 steam loco, 995 American Railway Express baggage car numbered 770, 994 Washington Pullman numbered 772 and 996 observation car numbered 773. The cars have red doors and windows, figures in the windows, die-cast wheels and trucks and brass and nickel journals. The engine is C5 and the cars are C6.



2123

Dorfan prewar wide gauge scarce and unusual Kresgees 3920 die-cast Loco-BUILDER electric 0-4-0 loco with special burnt orange color used for Kresgee store display. The loco has green, brass and gold trim and is in an OB with original paper. The die-casting on the loco is intact and loco is C7.



2124

Dorfan prewar wide gauge The Black Diamond Express passenger set no. 901, circa 1927 in set box with individual original box inserts. The set contains the following; 3930 black 4-4-4 Loco-BUILDER electric loco, 990 Washington Pullman, 990 Chicago Pullman and a 992 observation car. The crackle tone brown cars have black roofs, brass window trim, nickel trucks and brown doors. The die-casting on the loco has some deterioration. Loco is C4-5. The cars are C6. The set box has four split corners.



2125

Dorfan prewar wide gauge no. 800 orange lithographed New York Central Lines gondola numbered 253761 with brass trim and die-cast wheels. The trucks are custom made out of sheet metal. The floor inside the gondola has some surface rust, C5.



2126

Dorfan prewar wide gauge no. 804 Robins Egg blue lithographed Union Tank car numbered 29325 with red cradles, brass trim and die-cast wheels. The trucks are custom made out of sheet metal. The car is missing one coupler. The frame is C5 and the tank body is C7.



2127

Dorfan prewar wide gauge 801 green lithographed Santa Fe boxcar numbered 121499 with red roof, brass trim and sheet metal trucks. The roof has been repainted. The rest of the boxcar is C6.



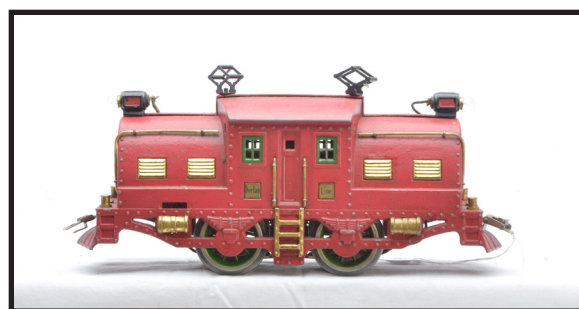
2130

Dorfan prewar wide gauge no. 806 brown lithographed Pennsylvania caboose numbered 486751 with blue/green roof, red cupola, yellow windows, brass ends and nickel trucks. The roof and cupola have been repainted. The caboose body is C6-7.



2128

Dorfan prewar wide gauge no. 805 red and black lithographed Pennsylvania hopper numbered 11701 with brass trim, die-cast wheels and trucks and nickel journals, C6.



2131

Dorfan prewar wide gauge 3920 red die-cast Loco-BUILDER 0-4-0 electric loco with green windows and brass trim. The loco is C6.



2129

Dorfan prewar wide gauge no. 806 brown lithographed Pennsylvania caboose numbered 486751 with blue roof, red cupola, yellow windows, brass ends, die-cast trucks and nickel journals. The wheels on the caboose have been replaced. The caboose is C6.



2132

Dorfan prewar wide gauge maroon lithographed passenger cars with chartreuse windows and nickel trucks including a 789 Mountain Brook Pullman and a 790 Pleasant View Pullman, C7.



2133

American Flyer prewar O gauge red lithographed passenger set. The set contains the following; 1096 electric 0-4-0 loco with orange windows, 1120 coach and an 1120 observation car. The four-wheel cars have black frames, dark red roofs and orange details. The set is C7-8.



2134

American Flyer prewar O gauge The Rocky Mountain Special lithographed freight set no. 1303, circa 1926 in individual OBs, except for the caboose and set box. The set contains the following; 3014 black midsize boxcab 0-4-0 electric loco with yellow and nickel trim and brass plates, 3007 orange Union Pacific sand car, 3008 green Great Northern boxcar with black roof, 3006 black AF R.R. log car with load and nickel stakes, an 1117 red AF caboose with black roof, brown cupola and orange details, eight curve track sections and eight straight track sections. The set is C7-8. The individual OBs are complete. Set box has no split corners and label is intact.



2135

American Flyer prewar O gauge two-tone red Ambassador passenger set no. 1388 in individual OBs. The set contains; 3187 center cab 0-4-0 electric loco with brass trim and plates, 3380 Club car, 3381 Pullman, 3382 observation and instruction booklet. The passenger cars have brass trim, plates, air tanks and black trucks with brass journals. There are AMBASSADOR plates above the car windows on all of the cars. The set is C7-8. The OBs are complete but show some wear.



2136

American Flyer prewar three 2005 green triangle signals, one with an OB. Also included are two 233 green arc lights, one in an OB. The accessories are C7. The boxes are complete with labels intact.



2137

American Flyer prewar O gauge scarce lithographed passenger set no. 2, circa 1916 with Imperial coach in set box that has original cardboard inserts. The set contains the following; no. 2 cast iron clockwork steam loco with red band under the cab window, no. 120 four-wheel American Flyer Line tender, 1108 AFL Express Service Baggage car and an 1107 Imperial Limited Line coach. The yellow and green four-wheel cars have black roofs and frames. The set is C7-8. The box is complete and labels are mostly intact.



2138

American Flyer prewar O gauge The Bluebird two-tone blue lithographed passenger set no. 1338, circa 1928-29. The set contains the following; 3113 electric 0-4-0 loco with brass trim and orange details, 1206 baggage car with sliding door, 1286 Pullman and a 1287 observation car. The eight-wheel cars have nickel journals. The roof on the observation car has some paint flaking, otherwise set is C7.



2139

American Flyer prewar O gauge lithographed sheet metal Burlington Zephyr silver and black passenger set no. 7378-RT, circa 1935 in set box. The set contains the following: 562 power car numbered 9900, three 564 coaches, 564 observation car, instruction manual and sheets, packet with a 450 terminal set, packet with a 452 crossover, eight curve track sections, eight straight track sections and a 1048 25-watts transformer. The power car is the harder to find version with a reversible electric motor. The set is C8. The set box has no split corners and label is fully intact.



2142

American flyer prewar O gauge brown lithographed Gold Coast Limited passenger set no. 19, circa 1924 in set box. The set contains the following: no. 14 black cast iron clockwork 0-4-0 steam loco with yellow and gold trim, no. 120 four-wheel American Flyer Line tender, 1204 baggage car, a 1203 coach, one manual switch, eight curve track sections, four straight track sections, transformer and rheostat. The brown four-wheel passenger cars have five windows on each side. The loco has a broken wheel otherwise the loco and tender are C7 and the cars are C7-8. The set box is stained and shows wear.



2140

American Flyer prewar O gauge lithographed passenger set no. 0, circa 1910 in set box. This set contains the following: no. 2 black cast iron clockwork 0-4-0 steam loco with green stripes under the cab windows, 328 four-wheel red tender and a four-wheel dark green Chicago coach with three punched windows and doors, two riser steps, gold details, black roof and frame. The car is 4 1/2 inches in length. Also included are five curve track sections. The set is C7. The set box is damaged but has original dividers.



2143

American Flyer prewar O gauge lithographed The Empire Express passenger set no. 749 in set box that has one original cardboard insert. The set contains the following: black cast iron clockwork 0-4-0 steam loco with gold trim and key, four-wheel Limited tender, two 515 coaches and a 513 observation car. The four-wheel cars are yellow and red with red roofs and black frames with yellow spring details. The loco is C7-8. The rest of the set is C7.



2141

Desirable American Flyer prewar O gauge uncataloged Montgomery Ward green lithographed passenger set in individual OBs and set box. The set contains the following: 7011 electric 0-4-0 loco, 3000 United States Mail Railway Post Office baggage car, 3001 Illini Pullman and a 3001 Illini observation car. The set is C7. The individual OBs are complete and the set box has the label intact.



2144

American Flyer prewar O gauge Nation Wide lithographed freight set made for J.C. Penneys in set box. The set contains the following: type XII black cast iron clockwork 0-4-0 steam loco, four-wheel Nation Wide Lines tender, 1110 yellow Nation Wide Lines Hams and Bacon Specialties refrigerator car with orange roof, 1111 red Nation Wide Lines caboose with green roof and eight curve track sections and track clips. The four-wheel freight cars have black frames. The roofs on the freight cars have been repainted, otherwise the set is C7-8. The set box shows wear.



2145

American Flyer prewar O gauge green lithographed Nation Wide Lines passenger set made for J.C. Penneys including; 1093 green 0-4-0 electric boxcab loco with brass trim, 1108 baggage car and two 1107 coaches. The four-wheel passenger cars are green with yellow details and black frames. The set is C7.



2148

American Flyer prewar O gauge two silver 3178 Pullmans with brass trim and journals. These cars went with the the 1324-RCT Century Streamlined passenger set, circa 1935. The cars are C6.



2146

American Flyer prewar O gauge Nation Wide lithographed passenger set made for J.C. Penneys. The set contains the following; no. 10 black cast iron clockwork 0-4-0 steam loco, no. 120 four-wheel Nation Wide Lines tender with light and two four-wheel orange Nation Wide Lines coaches with blue/green roof, frame and details. The set is C7.



2149

American Flyer prewar O gauge unusual no. 3210 aluminum single dome tank car with four brass plates, C7.



2147

American Flyer prewar O gauge silver Aeolus Century streamliner passenger set no. 1324-RCT, circa 1935. The set contains the following; 9915 cast aluminum Aeolus streamlined Hudson loco and tender, three 3178 Pullmans and 3179 observation. The cars have brass trim and journals. The set is C7.



2150

American Flyer prewar O gauge Hiawatha streamliner passenger set 1741RW, circa 1936 in individual OBs and set box. The set contains the following; 1683 steam loco/AFL tender combination consisting of a 1682 loco and a 1640 tender, two 1641 coaches, an 1642 observation car, packet with a 450 track terminal set and instruction sheets. The set has gray trucks and brass journals. The loco is C7. The tender and cars have a few minor nicks, otherwise are C8.



2151

American Flyer prewar 215 water tank with black tower, red tank, and yellow ladder in OB, C7-8. Also included is a green block signal, C7-8. The box is complete with label mostly intact.



2152

American Flyer prewar O gauge clockwork lithographed passenger set no. 9, circa 1910 including; no. 2 black cast iron clockwork 0-4-0 steam loco with orange band under the cab windows, 328 blue four-wheel tender with light green frame and a four-wheel yellow and green Chicago coach with four windows, three riser steps, black roof and light green frame. The set is C6.



2153

American Flyer prewar O gauge cast aluminum Burlington Zephyr streamliner passenger set no. 1323-RT, circa 1935. The set contains the following; 9910 power car, 9911 baggage, 9913 coach and a 9912 observation car. The set is C7.



2154

American Flyer prewar O gauge freight set including; a 617 loco/tender combo with a 614 sheet metal 2-4-2 steam loco with brass and copper trim and a 3181 four-wheel AF tender with brass journals, 3006 black flatcar with lumber load, 3013 green sand car, 3012 orange boxcar with green roof and doors and a 3014 red caboose. The four-wheel cars have brass trim and journals. The set is C7.



2155

American Flyer prewar O gauge two-tone blue streamlined passenger set no. 15, circa 1938 with three individual OBs. The set contains the following; 4622-6 loco/tender combination consisting of a 4322-6 black 4-6-2 die cast Pacific steam loco with white striping and a 1623 type XIII tender, three 1621B coaches and a 1622B observation. The loco has the number 43226 below the windows. The cars have black trucks and brass journals. The front and rear wheels on the loco are disintegrating. The paint is very clean, however the vestibules have some scratches. The set is C8. The boxes are missing most flaps.



2156

American Flyer prewar O gauge original set box ONLY for a two-tone blue streamlined passenger set no. 315, circa 1939. This set contained the following; a 434 loco/tender combination with a 432 steam loco and 433 tender, two 1621B coaches and a 1622B observation car. The box is complete with all flaps and label is intact.



2157

American Flyer prewar O gauge passenger set no. M0, circa 1914 in set box with original cardboard inserts. The set contains the following; a no. M1 black mechanical 0-4-0 steam loco with red band under the cab windows, 328 four-wheel tender and a 102 four-wheel red lithographed American Flyer coach with gold details, gray roof and black frame. Also included are eight sections of curve track. The set is C7. The set box has repaired corners.



2158

American Flyer prewar O gauge no. 1107 red lithographed four-wheel scarce Yankee Flyer Line coach with gold details, black roof and frame, C7-8.



2159

American Flyer prewar O gauge two 1107 red lithographed four-wheel Dominion Flyer coaches with Canadian Pacific heralds, orange details, black roofs and frames. The roofs have been repainted and the bodies are C6.



2160

American Flyer prewar O gauge unusual uncataloged lithographed Chicago passenger set, circa 1914, shown in the Montgomery Ward catalog. The set contains the following; black clockwork steam 0-4-2 loco which has a tin body, cast iron cowcatcher and steam chest and key, four-wheel 120 AFL tender and two four-wheel Chicago coaches with black roofs and frames, one red missing both couplers and one blue missing one coupler. The set is C6.



2161

American Flyer prewar The Queen City lithographed passenger set no. 134, circa 1930. The set contains the following; no. 4 black cast iron clockwork 0-4-0 steam loco with red and gold trim and key, 509 four-wheel red and black Union Pacific tender and two four-wheel yellow/orange 515 Empire Express coaches with red roofs and details. The set is C7.



2162

American Flyer prewar O gauge The Potomac passenger set no. 1344, circa 1928-29 in individual OBs and set box. The set contains the following; 3116 green 0-4-0 electric loco with a Rookie tan frame and brass trim, 3180 Club car, 3181 Pullman, a 3182 observation car and a manual for train maintenance. The passenger cars are Rookie tan with green roofs, THE POTOMAC plates above the windows, brass trim, black trucks and brass journals. The wheels on the loco are starting to disintegrate. The set is C7. The individual OBs are complete. Set box has two split corners and label is intact.



2163

American Flyer prewar O gauge 4621 loco/tender combination consisting of a 4321 die-cast 0-6-0 switcher with white striping and a 4320 eight-wheel AFL tender with light and brass journals. The American Flyer Lines decal is missing on the tender. The loco and tender are C7-8.



2166

American Flyer prewar O gauge scarce red lithographed freight set no. 106, circa 1922-24 in set box. The set contains the following; no. 13 black cast iron clockwork 0-4-0 steam loco embosses A.F. 12 under the cab window and has gold trim, 120 four-wheel AFL tender, 1113 sand car, 1112 automobile car with black roof, a 1114 caboose with black roof, 207 single arm semaphore, crossing gate and rheostat. The four-wheel freight cars have black frames. The set is C6. The box has no split corners and both labels are intact



2164

American Flyer prewar O gauge dark yellow/brown Union Pacific streamlined passenger set 1730, circa 1937 individual OBs and set box. The set contains the following; 1684 power car, two 1621Y coaches, a 1632Y observation car and eight curve track sections. The cars have gray trucks and brass journals. The loco is C7 and the cars are C7-8. The individual OBs are complete with all flaps. The set box show wear and label is mostly missing.



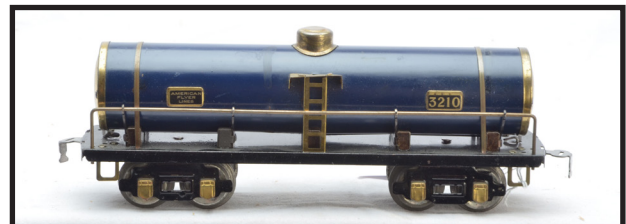
2167

American Flyer prewar O gauge freight set containing; 4622-6 loco/tender combination with a type XV black 4-6-2 die cast Pacific steam loco numbered 43226 with white striping, a 1623 type XIII AFL tender, 3208 orange boxcar with a peacock roof, 3210 silver tank car with light green frame, 3213 searchlight car with silver frame, red sub base and gray searchlight housing which is detached 3219 green dump car, 3025 wrecker car with green base and red cab and a 3211 red caboose. The cars are 9 1/2-inches long and have eight-wheel black trucks with brass journals. The front and rear wheels on the loco are starting to disintegrate. The loco has paint touch up on the roof. The caboose has a large section of paint touch up on the roof. The set is C7.



2165

American Flyer prewar two 2206 highway flashing signals with green bases, black poles and gold painted finials. One of the signals has blue die-cast bulb fixture and one has green die-cast bulb fixture. The signals are C6.



2168

American Flyer prewar O gauge 3210 dark blue tank car with brass trim and ends, black frame and trucks and brass journals, circa 1928-29. The car is C7.



2169

American Flyer prewar O gauge lithographed passenger set containing a no. 2 black cast iron clockwork 0-4-0 steam loco with light green band under the cab windows, key and four boiler bands, 328 four-wheel tender with red frame and a four-wheel white Chicago coach with three punched windows on each side, three riser steps, light green details and red frame. The set is C6.



2170

American Flyer prewar O gauge The Panama Limited passenger set no. 19 in set box with an original cardboard insert. The set contains the following; no. 14 type XIV black cast iron 0-4-0 clockwork steam loco, 120 four-wheel red/green/gold tender with tail light, green four-wheel baggage car with red roof, green four-wheel coach with red roof, no. 90 Hyde Park Station, 261 Hudson tunnel, two 206 danger signals, one orange and one green, 221 crossing gate, 202 banjo signal with a green base, 207 single arm semaphore with a blue base, 203 flashing signal, 220 clock, eight curve track sections and four straight track sections. The set is C7-8. The set box has one split corner. Both labels are intact with clean color graphics. This is a high quality matched original set.



2171

American Flyer prewar wide gauge All American Limited lithographed passenger set no. 1433 containing; 4019 maroon electric 0-4-0 loco with yellow-orange windows and doors, nickel trim and brass plates, 4040 mail and baggage car, 4041 America Pullman and 4042 Pleasant View observation car. The red cars have maroon roofs, four-wheel black flex trucks, black air tanks and no journal boxes. The set is C6-7.



2172

American Flyer prewar wide gauge two 2210 double arm lamp posts, one green with red round base and one orange with a green round base. The orange lamp is missing the gold painted finial. The lamps are C6. Also included is one 2210 OB with label intact and has one split corner.



2173

American Flyer prewar wide gauge Pioneer freight set no. 1490, circa 1930 all in individual OB and set box. The set contains the following; 4694 die-cast loco/tender combo consisting of a 4692 black steam loco using an 1134 lves casting with brass and copper trim and a 4693 AFL Vanderbilt tender with brass and red plates numbered 4694, gray flex trucks and brass journals, 4017 green sand car, 4018 Rookie Tan automobile car with turquoise roof and a 4021 red caboose missing a hand rail. All of the cars have gray flex trucks, brass trim and brass journals. The loco has been rewheeled and the headlight has been replaced. The set is C7-8. The individual OBs and set box are intact. The set box shows wear but the label intact.



2174

American Flyer prewar three 2209 single arc lamp posts with gold finials, one turquoise, one green and one maroon. Also include is one OB complete with label mostly intact. The lamp posts are C7.



2175

American Flyer prewar wide gauge orange lithographed The Statesman passenger set no. 1473, circa 1929. The set consists of a 4654 orange New Haven type electric loco with blue green window and doors, brass trim and gray frame, two 4151 Bunker Hill Pullmans and a 4152 York Town observation car. The passenger cars have blue/green details, gray flex trucks, brass air tanks and journals. The set has paint touch up and is C6-7.



2178

American Flyer prewar wide gauge Stadium Set no. 1479, circa 1931. The set contains the following: 4683 red St. Paul style electric loco with brass trim and gray frame, 4350 club, 4351 Pullman and 4352 observation car. The cars have blue green bodies, red roofs and doors, brass trim and gray fixed trucks with brass journals. The engine has been rewheeled and is C6-7. The cars are C7.



2176

American Flyer prewar wide gauge 4683 tan St. Paul type electric 0-4-0 loco with black frame and brass trim and plates, circa 1929. The engine is C6. This engine was cataloged as set no. S4685 and was a Spiegel Department Store Special. This set consisted of a 4683 loco, two 4081 Washington Pullmans and a 4082 Valley Forge observation car.



2179

American Flyer prewar two 2009 brass single arc lights painted dark green, one with a lose shade, C6.



2177

American Flyer prewar wide gauge uncataloged red lithographed Empire Express passenger set no. 1422, circa 1929-30 in individual OBs and set box. The set contains the following: 4753 red New Haven boxcab 0-4-0 electric loco with orange window inserts, brass and nickel trim, EMPIRE EXPRESS brass plate on one side and a 4753 brass plate on the other side, 4141 Knickerbocker Pullman and a 4142 Henry Hudson observation car. The cars have black flex trucks and no journals. The loco has been rewheeled and is C6. The cars are C6-7. The boxes show wear. The label on the set box is partially intact.



2180

American Flyer prewar wide gauge desirable dark blue Flying Colonel passenger set no. 1486, circa 1928-29 in individual boxes and set box. The set consists of 4686 NYC-style electric 4-4-4 loco with The Ace plates and brass and nickel trim, 4380 Madison club car with a boxed mail bag set, 4381 Adams Pullman, 4382 Adams observation car and a model 1275 A.C. circuit breaker. The cars have brass plates, battery boxes, air tanks, trim and journals and gray flex trucks. There are FLYING COLONEL plates above the car windows. The loco box has original cardboard inserts. The loco has a some small spots of paint touch ups on the roof and sides. The 4380 car has paint touch up on one corner of the body. The 4381 car has paint touch up above all of the doors. The observation car has paint touch up on one corner of the car and above two doors. This set does have some minor paint touch ups however is a very difficult set to find in this high quality condition. The set looks C8, other than the paint touch ups. The individual OBs are clean with no split corners and correctly marked D. BLUE. The set box lid has a hole in the center of the lid. Both labels are intact.



2181

American Flyer prewar 2216 die-cast crossing warning signal with tan base, red pole and nickel cross buck and a 2218 block signal with red base, pole and ladder. The signal light on the 2218 has been repainted and is a C5. The 2216 is C6.



2184

American Flyer prewar wide gauge tan lithographed Presidents Special passenger set no. 1453 circa 1926. The set contains; 4039 NYC style boxcab 0-4-0 electric loco with yellow windows, brass plates, nickel trim and black frame, 4080 mail and baggage, 4081 Washington Pullman and 4082 Valley Forge observation car. The passenger cars are yellow, white and black trim detail. Cars have black vestibules, battery boxes and air tanks. The cars have black flex trucks and are the version with no journals. The black trucks on the observation car has some paint touch up. The set is C6.



2182

American Flyer prewar wide gauge 4696 die-cast loco/tender combination consisting of a 4695 black die-cast brass piper steam 4-4-2 loco with brass and copper trim and blue-green striping and a 4693 AFL Vanderbilt tender with brass plates, trim, gray fixed trucks and brass journals. The trucks on the tender have been repainted. Tender has slight warpage in the die-cast body. The loco and tender are C6-7.



2185

American Flyer prewar wide gauge 4696 die-cast loco/tender combination consisting of a 4695 black die-cast brass piper steam 4-4-2 loco with brass and copper trim and blue-green striping with a scarce and unusual 4693 AFL Vanderbilt tender with winged American Flyer decal, gray flex trucks, brass trim and journals. The loco is C7. The decal on the tender is flaking on one side. The tender is C6.



2183

American Flyer prewar wide gauge 4006 red hopper with gray steps and fixed trucks, nickel and brass trim and brass journals. The paint on the hopper is very clean, however there is paint touch up along the bottom of the car on the side and ends. The car is C7-8.



2186

American Flyer prewar wide gauge 4022 orange machinery car with turquoise side bars, gray flex trucks, brass trim and journals in OB. Included with the car is an original wood load. The car is C7. The OB is missing all flaps on one end.



2187

American Flyer prewar wide gauge 4006 red hopper with brass trim, gray flex trucks and brass journals. The paint and trim are clean with some minor nicks, with most inside the hopper, C7-8.



2190

American Flyer prewar wide gauge 4021 red caboose with brass trim and plates, gray flex trucks and brass journals in OB. The caboose is missing a hand rail, otherwise the car is C7. The OB is complete.



2188

American Flyer prewar wide gauge 4010 yellow tank car with dark blue frame, A.F. LINES AIR SERVICE decals, nickel bands, gray flex trucks and brass journals in OB. The frame has some minor nicks, otherwise the car is C8. The box is complete.



2191

American Flyer prewar wide gauge Hamiltonian two-tone red passenger set no. 1484, circa 1928-29. This set contains the following; 4678 electric loco with gray frame and brass trim, 4340 Club, 4341 Pullman and 4342 observation car. The passenger cars have brass plates and air tanks, gray flex trucks and brass journals. The cars have HAMILTONIAN plates above the windows. The set is C7-8.



2189

American Flyer prewar wide gauge 4020 two-tone Rolls Royce blue stock car with brass trim and gray set trucks that have brass journals. The car is C7-8.



2192

American Flyer prewar wide gauge 4686 dark blue 4-4-4 electric loco, circa 1928-29. This is the version with three gold painted windows on each side, two plates per side that read The Ace and Built by American Flyer Lines. The loco has brass trim. The loco has been rewheeled. The loco is C7.



2193

A.C. Gilbert Company Erector set no. 6 two-layer set with removable wooden parts tray in an original brown wooden case. The case measures 15 inches by 10 inches by 3 inches. The set appears to be complete and is C7.



2196

A.C. Gilbert Company Erector set no. 7 with removable metal parts tray in original red wooden box. There is a color label pasted on the inside of the lid that reads The New Big No. 7 Erector. The box measures 21 1/2 inches by 8 1/4 inches. The set appears to be complete and is C6-7.



2194

A.C. Gilbert Company Erector set no. 8 three-layer set with two removable wooden parts trays in an original brown wooden box. Also included are inspectors vouchers and a part list which is pasted to the inside of the lid. The case measures 20 inches by 12 inches by 5 inches. The set appears to be complete, however the parts on the bottom layer have some surface corrosion. Set is C6-7.



2197

A.C. Gilbert Company Erector set no. 6 1/2 with electric engine in a custom made wooden box. This set originally came in a metal box. The set appears to be complete. Please view photo to verify condition.



2195

A.C. Gilbert Company Erector assembled New York Central Hudson loco and tender from the 8 1/2 set in an original red wooden box. Included with the engine and tender are instruction booklets. The loco and tender are C7. There is a label mostly intact on the inside of the lid.



2198

A.C. Gilbert Company Erector set no. 8 original red wooden box ONLY with a pasted on label with a picture of a Zeppelin on the inside of the lid. The only part included with the set is a rotating assembly. All other contents are missing. One side hinge on the case is missing. Please view photo to verify condition.



2199

A. C. Gilbert Company Erector no. 4 1/2 motorized set in a red metal case with original cardboard inserts. There is a paste on label on the inside of the box lid. The set has never been used, C9. The metal case shows some wear.



2202

Leland Detroit Manufacturing Co., Detroit, Michigan extra motor coach for the model no. 2000 Monorail elevated system, C6.



2200

Leland Detroit Manufacturing Co., Detroit, Michigan model no. 2000 Monorail elevated system including; one motor coach, three trailer coaches, three metal connectors, hardware, eight curve track sections, six straight track sections, fourteen red cast iron bases and support poles. Included with the set are two original cardboard sleeves for the coaches. The set is C7.



2203

Hoge Mfg. Co. prewar O gauge Tom Thumb Railroad lithographed passenger set no. 881 in set box with original cardboard dividers. The set contains the following; 881 green and yellow 0-4-0 electric loco, 881 Pullman, an 881 observation car, power house, eight curve track sections and an instruction sheet. The four-wheel cars are yellow with green and black details. The insides and under side of the roofs are orange. The set is C7-8. The box has two reinforced corners and has nice color graphics.



2201

Leland Detroit Manufacturing Co., Detroit, Michigan two extra red cast iron bases and support poles. for the model no. 2000 Monorail elevated system, C6-7.



2204

Joy Line made by Louis Marx and Co. prewar mechanical lithographed passenger set in set box with original cardboard inserts. The set contains the followings; 105 clockwork red steam loco with black frame and nickel trim, a 351 four-wheel black tender, two 357 four-wheel green coaches with orange roofs, black frames and gold details, 458 four-wheel green observation car with orange roof, black frame and gold details, twelve curve track sections, four straight track sections and a 90-degree crossover. The set is C7-8. The OB is complete with some tape.



2205

Hafner Overland Flyer prewar O gauge lithographed passenger set no. 29 in OB. The set contains the following; no. 110 black cast iron clockwork 0-4-0 steam loco with key, 1190 four-wheel Chicago North Western tender, 97 tan Union Pacific baggage car with blue roof, 96 tan Union Pacific coach with green roof, 98 tan Union Pacific observation car with blue roof, six 120 telegraph poles, 121 danger signal, 122 clock, 123 crossing gate, whistle sign, 125 double arm semaphore, no. 90 Hyde Park with gray base and green roof, eight curve track sections and six straight track sections. The four-wheel cars have black frames. Also included is an original catalog. The loco is C6. The tender and cars are C7-8. The accessories are C7. The set box has no split corners.



2206

Hafner Overland Flyer prewar O gauge lithographed Santa Fe passenger set containing the following; no. 100 black cast iron clockwork 0-4-0 steam loco with red and gold trim and key, 1190 four-wheel Santa Fe tender and three four-wheel no. 86 passenger cars with black roofs and frames and green, gold and black details. The set is C7.



2207

Hafner Overland Flyer prewar O gauge lithographed freight set no. 4F containing the following; 1110 green clockwork 0-4-0 steam loco with bell, 1190 four-wheel sheet metal green Overland Flyer tender, 82 red New York Central Lines sand and gravel car numbered 31400, 80 green Overland Flyer Santa Fe boxcar numbered 31320, 81 blue Peerless Stock Car with orange doors and roof and a no. 83 red Overland Flyer Chicago North Western caboose. The four-wheel freight cars have black frames. The set is C7.



2208

Hafner Overland Flyer prewar O gauge lithographed passenger set containing the following; 110 black cast iron 0-4-0 steam loco with red and gold trim and key, 1190 four-wheel Chicago North Western tender and three four-wheel no. 86 yellow Overland Flyer Chicago North Western coaches with green, red and black details, black roofs and frames. The set is C7.



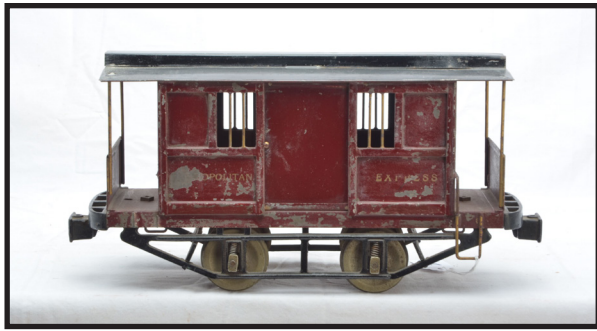
2209

Hafner prewar O gauge tin lithographed freight set containing the following; no. 1010 red sheet metal clockwork 0-4-0 steam loco with chrome side plates and boiler front and bell, four-wheel no. 1010 red and gray Hafner Trains tender and four-wheel freight cars; 91876 gray sand car with blue details and red ends, no. 1010 gray tank car with black details, red dome, ladders and ends and a 3057 red caboose with white details. The set is C7.



2210

Lionel prewar 2 7/8 gauge No. 800 maroon powered boxcar or jail car lettered Metropolitan Express with black roof and black cast iron frame, C4-5.



2211

Lionel prewar 2 7/8 gauge no. 900 maroon non-powered box trailer car or jail car lettered Metropolitan Express with black roof and black cast iron frame, C5.



2214

Lionel prewar 2 7/8 gauge no. 340 black cast iron suspension bridge, circa 1903-05. The end arch sections on the top of the bridge ends are embossed REDUCED SPEED and the top side pieces are embossed LIONEL MFG. CO. N.Y. The bridge measures 24 inches by 14 inches by 6 inches. The bridge is C7.



2212

Lionel prewar 2 7/8 gauge extremely scarce no. 200 motorized wooden gondola which has a red stain finish, circa 1901. The car is lettered Electric Express and has a black cast iron frame and hollow brass wheels. The gondola is C6.



2215

Lionel prewar 2 7/8 gauge scarce no. 100 maroon Baltimore and Ohio powered electric loco with black roof, black cast iron frame, brass hollow wheels and gold B and O lettering No. 5 on both sides and No. 5 on both ends. The loco is missing the motor and is C5.



2213

Lionel prewar 2 7/8 gauge scarce no. 400 non-motorized wooden gondola which has a natural brown stain finish, circa 1902. The car is lettered Electric Express and has a black cast iron frame and hollow brass wheels. The gondola is C6-7.



2216

Lionel prewar 2 7/8 gauge no. 1000 maroon motorized passenger car lettered MARYLAND ST. RY. CO. on both sides under the windows and BROADWAY on each end. The car has a black roof and cast iron frame and wheels. The car is C5.



2217

Lionel prewar 2 7/8 gauge no. 1050 maroon non-powered passenger car trailer lettered MARYLAND ST. RY. CO. on both sides under the windows and BROADWAY on each end. The car has a black roof and cast iron frame and hollow brass wheels. The car is C5.



2220

MTH Tinplate Traditions 2 7/8 gauge Electric Express Type II 10-1197-0 no. 200 powered wooden gondola in OB with outer shipping carton. The car has never been run, C9-10.



2218

Lionel prewar 2 7/8 gauge ribbon track with wooden ties. There are seven straight sections, three curve section and extra ties. Also included are two 380 dark green cast iron elevated pillar, one broken with broken piece included. Please view photo to verify selection and condition.



2221

Schoenhut prewar standard gauge composite and wooden railroad station with gray base tan brick walls, white window and door frames and burnt orange roof with a Railroad Station sign on top and tan chimney. The windows have TICKET OFFICE and TELEGRAPH OFFICE signs above them. The station is C6-7.



2219

Lionel prewar 2-7/8 inch gauge 300 electric trolley car, circa 1903-1905. Trolley has a Converse body, is lettered on both ends CITY HALL PARK 175 and has two reversible destination boards lettered UNION DEPOT and CITY HALL PARK. There are six reversible cream seats, wooden base and hollow brass wheels. The trolley is C5.



2222

Lionel prewar standard gauge dark green passenger set no. 348E in individual OBs and set box. The set contains the following; 380E electric loco with red lettered brass plates, brass and nickel trim, 429 Pullman/baggage combo, 428 Pullman and a 430 observation car. The cars have maroon window inserts and doors and nickel journals. The loco has two weights and has been rewheeled. The paint and trim on the set is clean. Set is C7-8. The individual boxes have all flaps attached except for the 430 box is missing two interior flaps. The set box is damaged, in pieces and very brittle.



2223

Lionel prewar standard gauge 112 Lionel City station with terra cotta base, beige walls, apple green window inserts and skylight, maroon doors and brass clock inserts. The station is C7-8.



2226

Lionel prewar standard gauge 436 power station with gray base, terra cotta walls, yellow roof cornices and window inserts, pea green skylight, window and door frames, red doors and chimney, Mojave chimney base and brass plates, C7-8.



2224

Lionel prewar standard gauge no. 38 dark olive green rubber-stamped New York Central Lines 0-4-0 electric loco with red window trim and striping, brass and nickel trim. The NYC Lines stamping is the version done in block lettering. The loco is C7.



2227

Lionel prewar standard gauge two-tone brown Baby State passenger set no. 342E, circa 1930-31 in individual OBs and set box. The set contains the following; 318E electric loco with a Bild-A-Loco motor, cream inserts, red lettered brass plates and brass trim, 310 baggage, 309 Pullman and a 312 observation. The passenger cars have cream inserts and copper journals. The loco has small spots of paint touch up. The set is C7-8. The individual OBs are complete with all flaps. The set box lid has two split corners but both labels are intact.



2225

Lionel prewar standard gauge one of a kind Benesch Department Store special olive green passenger set in individual OBs and set box. Benesch Department store was located in Baltimore, Maryland. The set contains the following; no. 8E electric 0-4-0 loco with red lettered brass plates, brass and nickel trim, 332 baggage with orange inserts and doors, 337 Pullman with red inserts and doors and a 338 observation car with red inserts and doors and a brass Macys Special plate on the back observation deck railing. The cars have brass trim and nickel journals. The engine has been rewheeled. The set is C7-8. The individual boxes have all flaps attached. The set box has an O gauge label which is stamped Benesch X. The box lid has two split corners and both labels are intact. This is a very unusual set and the only one we have ever seen.



2228

Lionel prewar standard gauge no. 202 motorized Summer trolley, circa 1910-13 with six yellow benches with four reversible that have red ends, red roof and ends and yellow clerestory roof section. The car is gold rubber-stamped ELECTRIC RAPID TRANSIT on the black frame on both sides. The trolley has paint touch up. The trolley is C5.



2229

Lionel prewar standard gauge no. 2200 non-powered Summer trolley trailer, circa 1910-13 with six yellow benches with four reversible that have red ends, red roof and ends and yellow clerestory roof section. The car is gold rubber-stamped ELECTRIC RAPID TRANSIT on the black frame on both sides. This was made to go with the 200 motorized Summer trolley. The trolley trailer is C5.



2230

Lionel prewar standard gauge dark olive green passenger set no. 34, circa 1913 containing; 33 NYC 0-6-0 electric loco rubber-stamped with NEW YORK CENTRAL LINES in block lettering, brass trim and red window trim, 35 Pullman missing a coupler and a 36 observation car with long observation deck. The cars have NEW YORK CENTRAL LINES above the windows and have ribbed sides. The cars have embossed frames. The set is C6.



2231

Lionel prewar standard gauge 300 Hell Gate Bridge with terra cotta base, cream towers, apple green sides, brass railing and plates in OB, C7-8. The OB is split on one side and is missing three flaps on one end. The label is intact on the other side.



2232

Lionel prewar standard gauge passenger set no. 362E, circa 1931 in individual OBs. The set contains a 384E black steam loco with green stripe and windows, brass and copper trim and red lettered brass plates, 384T Lionel Lines tender with brass and copper trim, green stripe and copper journals, 309 maroon Pullman with terra cotta roof, cream inserts, wood grain doors, nickel journals and NEW YORK CENTRAL LINES stamped above the windows and a 312 maroon observation with terra cotta roof, cream inserts and doors, copper journals and THE LIONEL LINES stamped above the windows. The loco has been rewheeled. Set is C7-8. The car boxes are correctly stamped WINE. The loco and tender boxes have original cardboard inserts. The individual boxes are complete but the loco box is missing two flaps. The set box lid has some split corners and has been repaired. Both labels are intact.



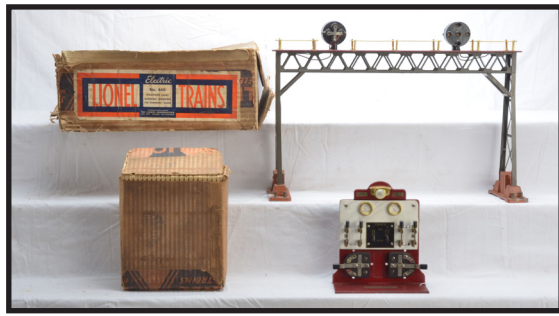
2233

Lionel prewar standard gauge 140L illuminated 90-degree curve tunnel that has terminals, hand painted steel construction with six chalet-style houses, waterfall and a snow-capped mountain top. The fence over the waterfall is broken off. Tunnel is C6.



2234

Lionel prewar standard gauge no. 42 harder to find olive green 0-4-4-0 electric loco rubber-stamped New York Central Lines with dual motors, red windows and striping along the bottom edge of the frame, thick rimmed wheels, round hood and brass and nickel trim. The engine is C7-8.



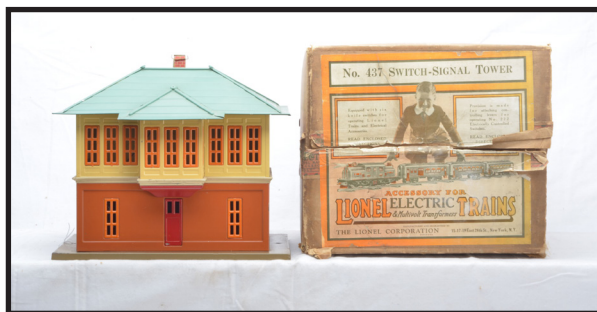
2235

Lionel prewar standard gauge 440 signal bridge with terra cotta bases, gray bridge, maroon walkway, brass hand rails and rail supports in OB. Also included is a 440C panel board with crackle red base, white composition panel board and brass trim both in OB. The bridge and panel board are C7. The 440 box is damaged but label is intact. The 440C box is complete with all flaps.



2236

Lionel prewar standard gauge dark olive green 1912 electric 0-4-4-0 loco with a single motor, maroon ventilators and window trim and is rubber-stamped in block lettering New York Central Lines. This is the version with square hood and thick-rimmed wheels, circa 1912. The loco is C6.



2237

Lionel prewar standard gauge 437 illuminated switch signal tower with paper instruction sheet pasted to the underside of the base, Mojave base, terra cotta lower walls, ivory band between floors, cream upper walls, orange window inserts, peacock roof, lithographed red brick chimney in OB. The instruction sheet is fully intact but has staining. The station is C7-8. The OB is complete with all flaps and label is fully intact.



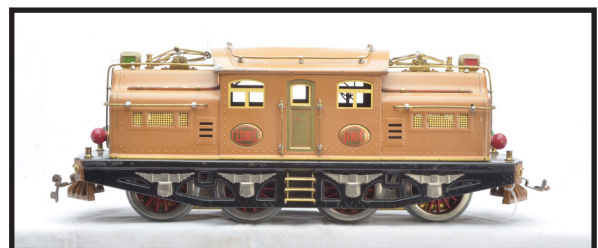
2238

Lionel prewar standard gauge no. 6 N.Y.C. and H.R.R.R. 4-4-0 steam loco with thick rimmed wheels, Russian blue iron boiler, red windows, pedestal headlight and nickel trim and an eight-wheel N.Y.C. and H.R.R.R. tender that has red stripe along the frame edge and embossed LIONEL MFG. CO. N.Y. on the underside of the frame. The loco and tender are C6-7.



2239

Lionel prewar standard gauge dark olive green passenger cars with maroon doors, wooden air tanks, removable roofs, three-hole steps and NEW YORK CENTRAL LINES above the windows in block lettering, circa 1917-19 including; 19 Baggage/Parlor car, 18 Parlor car and a 190 observation car with a long observation deck. The cars are C6.



2240

Lionel prewar standard gauge 408E State brown 0-4-4-0 electric loco with dual motor, red lettered brass plates, brass and copper trim and cream inserts, circa 1930-33. The engine has been rewheeled. The roof on the loco has some paint chipping and dents and is C6. The rest of the loco is C7.



2241

Lionel prewar standard gauge two-tone brown State passenger cars from set no. 411E, circa 1930-33 including; 412 California Pullman missing a hand rail, 413 Colorado Pullman, 414 Illinois Pullman and a 416 New York observation car. The cars have cream inserts, brass trim, dark brown ventilators and die-cast journals. The car interiors are original and complete. The 414 car has paint missing on one corner of the roof, otherwise the cars are C7-8.



2242

Lionel prewar standard gauge scarce version 390E two-tone green steam loco with green frame, orange stripe, brass and copper trim and a 390T dark green Lionel Lines tender with orange striping, brass trim and nickel journals. The loco has been rewheeled. The loco and tender are C6-7.



2243

Lionel prewar standard gauge no. 94 high tension tower with terra cotta base, dark gray tower, six original porcelain insulators and brass plate. The tower is C7-8.



2244

Lionel prewar standard gauge peacock Macys Special no. 2 passenger set, circa 1931 in individual OBs and set box. The set contains the following; 10E electric loco with Bild-A-LoCo motor, dark green frame, orange stripe, red lettered brass plates and trim, 332 baggage, 339 Pullman, a 341 observation car, no. 81 rheostat and a box of connecting ties. The cars have dark green roofs, orange inserts and nickel journals. The engine has been rewheeled. The paint and trim on this set are very clean. The loco is C8. The cars have a few minor nicks and are C7-8. The individual OBs are all marked P. BLUE and are clean and complete. The set box has no split corners and both labels are intact.



2245

Lionel prewar standard gauge no. 94 high tension tower with red base, aluminum tower, six original porcelain insulators and a nickel plate, C7-8.



2246

Lionel prewar standard gauge maroon/brown passenger set no. 52, circa 1915-19 in original set box that has original cardboard inserts. The set contains the following; no. 53 electric 0-4-0 loco rubber-stamped NEW YORK CENTRAL LINES with square hood, brass ventilators, dark olive window trim and striping along the frame edge, brass and nickel trim, 181 baggage/Pullman combo, 180 Pullman, a 182 observation car with a long observation deck. The cars are lettered NEW YORK CENTRAL LINES above the windows olive window trim and doors and have black wooden air tanks. The set is C6-7.



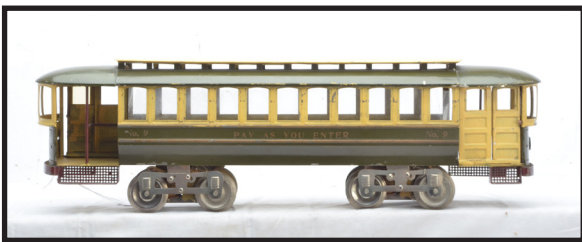
2247

Lionel prewar standard gauge 92 floodlight tower with red base, aluminum tower, nickel lamp housings and nickel and black plate in OB. The tower is C8. The OB is sealed on one end and has all flaps attached on the other end. The label is intact



2250

Lionel prewar standard gauge extremely scarce version of the 400E two-tone Blue Comet 4-4-4 steam engine with a cream stripe. The loco has copper trim, turned brass posts, brass L plates under the windows and a 400T with black lettered brass plates, copper and brass trim and die-cast journals. The frame is solid and intact. The loco and tender are C7. The loco and tender are in OBs. The loco box has an original cardboard insert. The loco box has a shipping label and is complete with a tape repaired flap. The tender box is complete with all flaps. Very few of these engines are known to exist in original condition.



2248

Lionel prewar standard gauge no. 9 dark olive green trolley version with two motors, cream windows and roof section, eleven windows, circa 1910-12. The trolley is rubber-stamped NO. 9 PAY AS YOU ENTER under the windows. The trolley is embossed LIONEL MFG. CO. N.Y. on the underside. The trolley is C7.



2251

Lionel prewar standard gauge two-tone Blue Comet passenger cars with cream inserts, brass trim and die-cast journals including; 420 Faye Pullman, 421 Westphal Pullman and a 422 Tempel observation car. The interiors of the cars are original and complete. Except for a couple of minor nicks the cars are C8. The boxes are missing some flaps.



2249

Lionel prewar standard gauge no. 67 dark green double lamp post in OB, C7. The OB is complete with all flaps.



2252

Lionel prewar 911 illuminated Country Estate landscaped plot. The 191 villa has a gray base, yellow walls and chimney, red roof, and dormers and apple green window inserts and doors. The landscaping is intact, bright and clean. The villa is C7-8.



2253

Lionel prewar 912 landscape plot with a 189 illuminated suburban villa in OB. The villa has gray base, mustard walls and dormers, apple green roof and terra cotta chimney. All shrubbery, trees and grass are intact. The plot is C8. The OB is complete with all flaps and label is mostly intact. The box shows some wear.



2254

Lionel prewar 913 Illuminated landscaped bungalow plot with 184 bungalow in OB. The bungalow has a gray base, ivory walls and chimney, apple green roof, porch roof and dormer and orange window inserts. The trees and shrubbery are clean and intact. The plot is C8. The box is complete with tape repaired flaps. The label is mostly intact. Box shows wear.



2255

Lionel prewar standard gauge 400E gunmetal 4-4-4 steam loco with brass L plates under the cab windows, brass bell and copper trim and a 400W whistle Lionel Lines tender with aluminum and red plates, brass L plate, brass and copper trim and brass journals in OBs. Also included is a 390-76 packet for the flags. The frame and steam chest on the loco have some scratches and is C7. The boiler and trim on the loco is C8. Except for a few minor nicks the tender is C8. The loco box has an original cardboard insert. Both boxes have all flaps.



2256

Lionel prewar 87 die-cast railroad crossing signal with dark green base, cream box and white head in OB. Except for a couple of nicks, the signal is C8. The OB is complete with all flaps.



2257

Lionel prewar 87 die-cast railroad crossing signal with very dark green base, Stephen Girard green box, white head and red bulls eye in OB, C6. The OB is missing some interior flaps and is worn.



2258

Lionel prewar no. 84 double racing set complete with track, circa 1912-16. The set contains two no. 80 and 81 metal automobiles, one orange numbered 9 and one red numbered 8, eight sections of 30-inch curve track sections and eight sections of 36-inch curve track. Both cars have original figures. One hand on one of the figures is broken off. The set is C7.



2259

Lionel prewar standard gauge 211 black flatcar with wood load, brass brake wheels, nickel stakes and journals in OB. The car is C8. The box is complete with all flaps.



2262

Lionel prewar standard gauge 214 yellow boxcar with brown roof and door guides, black lettered brass plates, nickel trim and journals in OB. Except for a faint hairline scratch on the roof the car is C8. The OB is clean with all flaps attached.



2260

Lionel prewar standard gauge 212 45N green gondola with six wooden barrels and a 208 aluminum tool box containing six original nickel-plated cast iron tools in individual OB. The car has black lettered brass plates, nickel brake wheels and journals. Car is C8.



2263

Lionel prewar standard gauge scarce 214R white refrigerator car with light blue roof, black lettered brass plates, nickel trim and journals in OB, C7-8. The OB is complete with all flaps.



2261

Lionel prewar standard gauge no. 213 cream cattle car with maroon roof and door guides, black lettered brass plates, nickel brake wheels and journals in OB. The car is C8. The box is complete with all flaps.



2264

Lionel prewar standard gauge 215 silver Sunoco tank car with black lettered nickel plates, brass railing, nickel trim and journals in OB. The Sunoco decals are fully intact. The tank car has some minor scratches near one plate, otherwise the car is C7-8. The OB is complete with all flaps.



2265

Lionel prewar standard gauge 216 dark green hopper with black lettered brass plates, nickel trim and journals in OB. The paint on the car is bright and clean. Car is C7-8. The OB is complete with all flaps.



2268

Lionel prewar standard gauge no. 61 maroon lamp post in hard to find OB, C7-8. The label is intact on the box.



2266

Lionel prewar standard gauge 219 crane car with cream cab, red roof, 45N green boom, black lettered brass plates, nickel trim, knobs and journal, C7-8.



2269

Lionel prewar standard gauge no. 61 dark green electric lamp post in harder to find early OB. The lamp post is C7. The OB is complete and label is intact.



2267

Lionel prewar standard gauge Mojave passenger set no. 409E, circa 1927-28 in individual OBs. The set contains the following; 408E electric loco with red lettered brass plates, brass and copper trim, 418 Pullman, 419 Pullman/baggage combo, 431 dining car and a 490 observation car. The cars have maroon doors, orange insets, brass steps and nickel journals. The interiors in the cars are complete and intact. The engine has been rewheeled. This is a clean matched original set with a very few minor scratches. The set is C7-8. The loco OB has an original cardboard insert and is missing one flap and has some damage. The car boxes are complete with all flaps.



2270

Lionel prewar standard gauge 9U Bild-A-LoCo outfit, circa 1928 in original brown presentation display box. The kit is totally original and complete with the following; orange 9U electric loco body with original cardboard tray insert, metal tray with all parts including the screwdriver, eight pieces of curve track sections and instruction sheets. The set is C7-8. The box lid has two split corners and has some repairs. The top lid label is fully intact and the side label is faded and partially intact.



2271

Lionel prewar standard gauge no. 23 red open frame bumper with spring-loaded buffer, gold rubber stamping on the inside and one straight track section in OB, C7-8.

The OB is complete with all flaps. .



2274

Lionel prewar standard gauge 163 freight station set in yellow OB that has original cardboard inserts. The set contains the following; two 157 red hand trucks, 161 45N green baggage truck and a 162 dump truck with orange frame and blue dump, C7-8. The OB has one split corner. The orange label is fully intact.



2272

Lionel prewar standard gauge no. 100 Electric Rapid Transit trolley, circa 1912-13 with blue body and roof, partially closed ends, flush end windows, five windows, cream clerestory, window section and doors, band under the windows that reads 100 ELECTRIC RAPID TRANSIT 100 and maroon steps and coupler supports in a scarce box. The track is missing however the track clips are included. The trolley is C6-7. The box lid has a label pasted on the underside and two original cardboard inserts.

The box shows wear.



2275

Lionel prewar standard gauge scarce and desirable no. 10 dark olive green interurban outfit in OB, circa 1915-16 with a no. 10 powered interurban unit with a pedestal headlight, seven windows, gold painted steps with three holes, NEW YORK CENTRAL LINES above the windows and maroon doors. The set is missing the track. The paint is very clean and the stampings are strong. The interurban is C8. The box has original cardboard inserts. The lid has split corners and label is intact. The condition of this interurban is fantastic and one of the best examples we have ever seen.



2273

Lionel prewar standard gauge 155 illuminated freight shed with white base, red floor, aluminum posts and finials, gray roof trimmed in red and brass plates in OB. The freight shed is C7. The OB is missing two interior flaps.

The label is missing the center section.



2276

Lionel prewar standard gauge scarce and desirable no. 10 dark olive green non-powered interurban trailer, circa 1915-16 with seven windows, NEW YORK CENTRAL LINES above the windows, gold painted steps with three holes and maroon doors. The paint is very clean and the stampings are strong. The interurban is C8. The condition of this interurban is fantastic and one of the best examples we have ever seen.



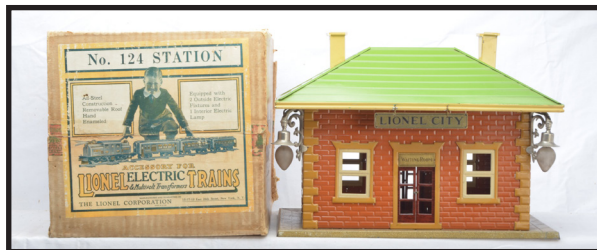
2277

Lionel prewar standard gauge 82N automatic semaphore train control with 45N green die-cast base, aluminum pole, black ladder and nickel finial in OB, C7-8. The box is missing most flaps on one end. Also included is an 80N semaphore with a red die-cast base, aluminum pole, black ladder and nickel finial, C7.



2278

Lionel prewar standard gauge Mojave passenger set no. 347, circa 1926-28 in set box. The set contains the following; no. 8 electric loco with black lettered brass plates, brass and nickel trim, 337 Pullman and a 338 observation car. The cars have maroon inserts, nickel journals and NEW YORK CENTRAL LINES above the windows. The wheels on the loco have been rewheeled with brass wheels. The set is C7-8. The set has both labels intact and lid has one split corner. There is an individual box bottom only for the loco.



2279

Lionel prewar standard gauge 124 illuminated Lionel City station with tan speckled base, terra cotta walls, cream chimney, tan window and door frames, pea green roof with cream edging, ivory inserts, wood grain doors, brass plates and nickel light fixtures, C8. The station is in OB that is complete with all flaps some with tape repair and has label fully intact.



2280

Lionel prewar standard gauge no. 38 dark green electric 0-4-0 loco gold rubber-stamped NEW YORK CENTRAL LINES with red window trim and rim along the edge of the fame and gold and nickel trim. The engine is C7.



2281

Lionel prewar standard gauge 444 roundhouse section with terra cotta walls, cream trim bans, maroon windows, dark green skylights, interior lights and pea green roofs. The roundhouse is complete with all windows, doors and both skylights. The roundhouse is C6-7.



2282

Lionel prewar standard gauge no. 33 gray gold rubber-stamped NEW YORK CENTRAL LINES 0-4-0 electric loco wit red window trim and rim along the bottom edge, gold and nickel trim. The top of the loco roof is bent underneath the bell. The loco is C6-7.



2283

Lionel prewar standard gauge no. 92 floodlight tower with terra cotta base, pea green tower, brass lamp housings and plate, C7-8.



2284

Lionel prewar standard gauge 392E black steam loco with harder to find black painted domes, brass and copper trim and a 392W Lionel Lines tender with twelve wheels, brass trim and nickel journals. Loco and tender are C7-8. The loco box has an original cardboard insert and is missing one exterior flap.



2285

Lionel prewar no. 99N train control block signal with red die-cast base and ladder and aluminum pole and black and aluminum and black plate. Also included is a 99 train control block signal with a dark green die-cast base, 3 red ladder, cream pole and brass and black plate. The accessory is C7.



2286

Lionel prewar standard gauge 390E outfit in individual OBs and set box. This set contains the following; 390E black steam loco with red lettered brass plates, brass and copper trim and orange striping and a 390T Lionel Lines tender with brass trim, orange striping and nickel journals. Also included is an original envelope for flags. The set is C7-8. The boxes are all complete with all flaps. The outfit box is complete with both labels.



2287

Lionel prewar standard or O gauge 923 tunnel with felt composition on corrugated paperboard base and has four porcelain insulators. The tunnel has a 90-degree curve, is hand painted with trees and shrubs and has three chalet-style houses. Tunnel measures 40 1/4 inches in length by 23 inches wide by 14 1/4 inches high. The underside of the tunnel has been cut out for the track. Some of the landscaping is missing and the tunnel has some warpage. Tunnel is C7.



2288

Lionel prewar standard gauge dark olive green freight set no. 1910, circa 1912. The set contains the following; 1910 dark olive green rubber-stamped New York New Haven and Hartford 0-6-0 electric loco, version with round hood, and two 112 N.Y.N.H. and H. gondolas. The loco has maroon ventilators and window trim, nickel and gold trim. The gondolas have red interiors, body rim and bottom edge, yellow primer on the underside of the cars and are embossed LIONEL MFG. CO. N.Y. on the undersides. The set is C5.



2289

Lionel prewar standard gauge 126 illuminated Lionelville station with 45N green base, mustard walls, red roof and door inserts, white door frames and window inserts and nickel plates in OB, C7-8. The box is missing one interior flap.



2290

Lionel prewar standard gauge two-tone green passenger set no. 365E, circa 1934 in set box and individual OBs, except for the loco box. The set contains a 9E gunmetal 2-4-2 electric loco with brass and red plates and nickel trim, 310 baggage, 309 Pullman and a 312 observation car. The apple green cars have dark green roofs, cream inserts and copper journals. The loco is C7-8. The car roofs are C6 and the car bodies are C7. The car boxes are stamped A. GREEN and are complete with all flaps. The set box is complete with all flaps and label is intact. The set box has staining.



2291

Lionel prewar standard gauge two 63 aluminum lamp posts complete with bulbs, one in OB. The lamp posts are C7. The OB is complete with all flaps, however is stained and worn.



2292

Lionel prewar standard gauge passenger set no. 45, circa 1921-23. The set contains the following: 38 maroon rubber-stamped New York Central Lines 0-4-0 electric loco with brass and nickel trim and four orange passenger cars with maroon window trim and NEW YORK CENTRAL LINES above the windows including; 32 baggage car with wood grain doors, 31 combo car with wood grain doors, 35 Pullman and a 36 observation car. The loco is C7-8 and the cars are C7-8, except for the roofs on the Pullman and observation cars which are C7.



2293

Lionel prewar standard gauge 511 green flatcar with original wood load, nickel trim and journals in OB. The car is C8. The box is clean and complete with all flaps.



2294

Lionel prewar standard gauge 512 45N green gondola with eight wooden barrels and all nickel trim and journals in OB. Other than one scratch on one side, the car is C8. The box is missing one interior flap and coupler flaps.



2295

Lionel prewar standard gauge 513 cream cattle car with maroon roof and door guides, nickel trim and journals in a worn and damaged OB. Except for a couple of very minor nicks the car is C8.



2298

Lionel prewar standard gauge 515 silver Sunoco tank car with nickel trim and journals in OB. All decals are intact. The car is C8. The OB shows wear and is missing two interior flaps.



2296

Lionel prewar standard gauge 514 yellow boxcar with brown roof and door guides, nickel trim and journals in OB. Except for a few minor nicks, the car is C8. The OB is complete with all flaps.



2299

Lionel prewar standard gauge 520 floodlight car with black frame, green base, nickel light housings, nickel trim and journals in OB. Car is C8. The OB is missing all flaps, with one end flap included.



2297

Lionel prewar standard gauge 514R white refrigerator car with light blue roof, white doors, nickel trim and journals in OB. The paint and trim on this car is very bright and clean. The roof has couple of very minor nicks, otherwise car is C8. The OB is missing two interior flaps, coupler flaps and has tape repair. The box shows wear.



2300

Lionel prewar standard gauge 516 red hopper with all nickel trim and journals in OB, C8. The box is missing all flaps and has three flaps detached.



2301

Lionel prewar standard gauge 517 red caboose with nickel trim and journals in OB, C8. The OB all flaps attached, some with tape repair.



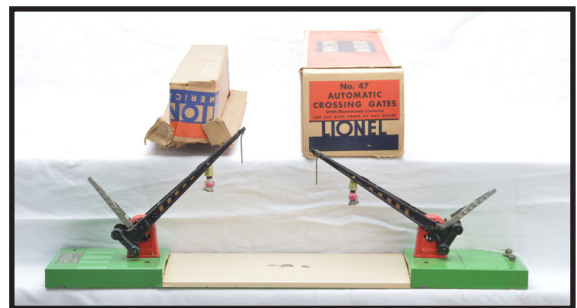
2304

Lionel prewar O gauge semi-scale freight set no. 251B, circa 1940 in individual OBs and set box. The set contains the following: 227 black steam 0-6-0 switcher, 2227B Pennsylvania slope-back tender, 2954 Pennsylvania boxcar, 2955 black Shell tank, a 2957 NYC caboose, eight curve track sections, three straight track sections, instruction sheets and booklet. The cars have high rise simulated knuckle couplers. The set is C8. The individual OBs have all flaps attached with some tape repair. The set box is complete with all flaps and label is intact. The box has some staining.



2302

Lionel prewar O gauge passenger set no. 148, circa 1931 all in individual OBs and set box. The set contains the following: 261 black loco with brass and copper trim, 257T Lionel Lines four-wheel tender with orange striping, brass trim and nickel journals with two four-wheel terra cotta passenger cars that have cream inserts, maroon frames and copper journals including a 529 Pullman and a 530 observation car, a 068 pea green warning signal with brass cross buck and finial, instruction sheet and an original wooden box with bulb. The set has a couple of minor nicks and is C8. The loco box has an original cardboard insert and has tape repair. The individual boxes have most all flaps attached. The set box has no split corners and both labels are intact.



2305

Lionel prewar O gauge no. 47 double crossing gate with green base ivory roadway and gray pedestrian gates, circa 1942 in OB that has an original cardboard insert, C7-8. The box is complete with all flaps with some tape repair.



2303

Lionel prewar O gauge two no. 58 peacock lamp posts in OBs, C8. The OBs are missing some interior flaps.



2306

Lionel prewar O gauge passenger set no. 178E, circa 1938 in individual OBs and set box. The set contains the following: 224E gunmetal 2-6-2 steam loco, 2689T Lionel Lines tender with nickel trim and journals, two 2640 Pullmans and a 2641 observation car. The passenger cars are blue with aluminum roofs and inserts and nickel journals. The loco is C8. The tender and cars are C7-8. The loco box has two original cardboard inserts. The individual boxes are missing some flaps. The set box is missing one interior flap and has detached inner flaps. The label is intact.



2307

Lionel prewar O gauge 071 telegraph post set with six 060 45N green telegraph posts that have red cross arms, white insulators and brass finials in yellow OB that has an original blue cardboard insert. The set is C7-8. The OB is complete with label intact. The lid has one split corner.



2308

Lionel prewar O gauge scarce uncataloged special Illinois Central Mojave passenger set in individual OBs. The set contains the following; 253 electric 0-4-0 loco with brass and nickel trim, two 610 Pullmans and a 612 observation car. The passenger cars have maroon inserts and are lettered ILLINOIS CENTRAL above the windows. The set is C6-7. The loco box is complete with all flaps. The car boxes are missing some flaps and have some detached.



2309

Lionel prewar O gauge no. 59 harder to find red lamp post in OB, C7. The OB is missing an end flap.



2310

Lionel prewar O gauge freight set no. 193W, circa 1938-39 in individual OBs and set box. The set contains the following; 226E black 2-6-4 steam loco, 2226W Lionel Lines tender with nickel journals, 2812 45N green gondola with an 812T set of three nickel plated tools, 2810 derrick car with cream cab, red roof, 45N green boom and three black knobs, 2820 searchlight car with 45N green base, 2817 red caboose, RCS remote control track section and a 67 whistle controller. The cars have all nickel trim and journals. The set is C7-8. The loco, tender, crane and searchlight car boxes have original cardboard inserts. The individual OBs are missing some flaps and have tape repair. The set box is complete with tape repair and label is mostly intact.



2311

Lionel prewar O gauge two no. 53 ivory lamp posts, C7-8.



2312

Lionel prewar O gauge olive green passenger set no. 294, circa 1928-29 in individual OBs and set box. The set contains the following; 252 electric loco with brass and nickel trim and red solid disk wheels, two 529 Pullmans and a 530 observation car. The four-wheel olive green cars have red inserts and no journals. The set is C8, The individual OBs are missing some flaps. The set box has no split corners and both labels are intact.



2313

Lionel prewar O gauge outfit no. 906B in master carton, circa 1940-42 containing a 232 PRR 0-6-0 B6 switcher and a 2232B Pennsylvania slope-back tender. There is an individual OB for the tender and an original cardboard insert and cotton wrap ONLY for the loco. The loco and tender are C8. The individual OB has all flaps attached. The master carton is complete with all flaps attached. Both boxes have labels intact.



2314

Lionel prewar O gauge promotional lithographed freight set no. 8070, circa 1941-42 in individual OBs and set box. The set contains the following; 1684 black 2-4-2 steam loco, 1689T dull black Lionel Lines tender, 1679 yellow Baby Ruth boxcar with maroon roof, orange doors and door guides, 1680 gray Sunoco tank car and a 1682 Tuscan N.Y.C. caboose. The eight-wheel freight cars have no journals. The set is C7-8. The engine OB is damaged. The rest of the individual OBs have most flaps attached. The set box is complete. Label is missing a section in the middle.



2315

Lionel prewar O gauge two no. 56 45N green lamp posts in OBs. Except for a couple of nicks the lamp posts are C8. The boxes are complete with all flaps, with one end flap detached.



2316

Lionel prewar O gauge uncataloged promotional red and aluminum passenger set no. 6502W, circa 1936 in individual OBs and set box. The set contains the following; 289E black 2-4-2 steam loco, 1689W Lionel Lines tender, 1701 coach, 1703 coach and a 1702 observation car. The tender and cars have nickel journals. The cars have fluted sides. The loco is C6 and the rest of the set is C7. The individual boxes are missing some flap and some are detached. The set box has all flaps with one detached. The label is mostly intact and faded.



2317

Lionel prewar O gauge two no. 56 Mojave lamp posts in OBs. The lamp posts are C6-7. The boxes are missing some flaps.



2318

Lionel prewar O gauge freight set no. 247W, circa 1940 in individual OBs and set box. The set contains the following; 225 black 2-6-2 steam loco, 2235W Lionel Lines tender, 2653 black hopper, 3651 black lumber car with five wooden logs and 160 bin, 2656 burnt orange cattle car with Tuscan roof, 2657 red caboose with Tuscan roof and ivory windows, 167 whistle controller in individual OB that has an original cardboard insert, individual OB with lockon and connecting ties, inspection card and an instruction sheet. The cars all have white lettering. The set is C8. The loco and tender boxes have original cardboard inserts. The loco box is missing all flaps. The rest of the boxes have most flaps attached, but have tape repair and show wear. The set box is complete with all flaps and label is fully intact.



2319

Lionel prewar O gauge no. 56 dark gray lamp post in an early OB, C7-8. The box has one detached flap.



2322

Lionel prewar O gauge Special no. 2 two-tone green passenger set, circa 1931-32 in individual OBs and set box. The set contains the following; 257 black 2-4-0 steam loco with brass and copper trim and orange striping, 257T four-wheel Lionel Lines tender with orange striping, brass trim and nickel journals, 607 Pullman, 608 observation car, 068 pea green warning signal with brass cross buck and finial, 81 controlling rheostat, no. 28 18-volt lamp in individual OB and an instruction booklet. The two-tone green cars have cream inserts and copper journals. The set is C7-8. The loco OB has an original cardboard insert. The individual OBs have most all flaps attached. The set box has no split corners and both labels are intact.



2320

Lionel prewar O gauge desirable China blue streamliner set no. 6510E, circa 1936-37. The set contains the following; 265E black Commodore Vanderbilt 2-4-2 steam loco, 265T Lionel Lines tender with nickel journals, 619 baggage-coach, 617 coach, 616 observation car and two vestibules. The cars have nickel journals. The loco and tender are C7-8. The cars are C6.



2323

Lionel prewar O gauge two no. 59 olive green lamp posts, C8.



2321

Lionel prewar O gauge no. 93 water tank with red base, silver tower and tank in OB. The no. 93 OB is complete with all flaps and sealed on one end. Label is mostly intact. Also included is a no. 1045 operating watchman with brass cross buck in OB. Both accessories are C7-8. The no. 1045 OB has all flaps and shows some wear.



2324

Lionel prewar O gauge olive drab armored loco set no 214, circa 1920-21. This set contains the following; 203 armored 0-4-0 motor car and two 900 four-wheel ammunition cars. The set is C5.



2325

Lionel prewar O gauge two no. 59 dark green lamp post, C7.



2326

Lionel prewar O gauge special red passenger set, circa 1930 including; 251 electric loco with black lettered brass plates ivory inserts and stripe along the edge of the loco frame, brass and nickel trim, two 710 Pullmans and 712 observation car. The cars have cream inserts and doors and copper journals. The cars are C7.



2327

Lionel prewar O gauge 2816 black rubber-stamped hopper with black journals. The trucks are positioned closer to the ends of the frame and have high rise simulated knuckle couplers in a damaged OB. The hopper has a couple of minor nicks, otherwise is C8.



2328

Lionel prewar O gauge desirable 2814R white rubber-stamped refrigerator car with brown roof and black trim and journals. The trucks are positioned closer to the ends of the frame and have high rise simulated knuckle couplers. The stampings on the car are strong. The car is C8.



2329

Lionel prewar O gauge desirable 2814 rubber-stamped orange boxcar with brown roof and door guides, black trim and journals, circa 1941-42. The trucks are positioned closer to the ends of the frame and have high rise simulated knuckle couplers. The stampings on the car are strong. The car is C8.



2330

Lionel prewar O gauge olive green passenger set no. 266E, circa 1929 in set box. The set contains the following; 254E electric loco with red lettered brass plates, brass and nickel trim in OB, two 610 Pullmans and a 612 observation cars. The passenger cars have red inserts, nickel journals and THE LIONEL LINES above the windows. The engine is C7-8 and the cars are C7. There are individual boxes for the engine, one of the 610 cars and the 612 observation car. The engine box is complete with all flaps. The car boxes are damaged. The set box has tape and has heavy wear. Both labels are intact.



2331

Lionel prewar O gauge 078 die-cast train control block signal with an orange base, cream pole, pea green ladder and white signal head, C7. Also included is an 099 die-cast train control block signal with black base, red ladder, ivory pole and black and brass plate, C6.



2332

Lionel prewar O gauge maroon passenger set no. 160, circa 1920-23. The set contains the following; 150 electric loco rubber-stamped New York Central Lines with olive green window trim, nickel bell and headlight and two four-wheel no. 600 rubber-stamped Pullmans with NEW YORK CENTRAL LINES above the windows and Lionel Corporation stampings on underside of the cars. The loco is C7 and the cars are C7-8.



2333

Lionel prewar O gauge scarce and desirable no. 4U Bild-A-Loce electric loco kit in OB with original cardboard inserts. The kit consist of a loco body which is orange, has a black frame and brass trim. Included with this kit is a reproduction screw driver. The kit is complete with an instruction sheet and metal tray. The set is complete with all parts and eight curve track sections. The set is C7-8. The box lid has four split corners, both labels are intact.



2334

Lionel prewar O gauge original set box ONLY for a 787W die-cast semi-scale freight set, circa 1940-41. This set contained the following; 763E steam loco, 2226WX Lionel Lines tender, 2954 boxcar, 2955 tank, 2956 hopper and a 2957 caboose. Also included is instruction booklet, a 167 whistle controller with instruction sheet in OB, individual box with lockon, lubricant and connecting ties and a RCS remote control track set individual OB. The set box is complete with all flaps and label is intact. The box does have some staining.



2335

Lionel prewar O gauge 763E black semi-scale 4-6-4 Hudson steam loco and a 2226WX Lionel Lines tender with high-rise simulated knuckle couplers in OB. Also included is an instruction sheet. The tender box has an original cardboard insert and cardboard coupler ring. The loco and tender are C8. The loco box is missing one interior flap and label is mostly intact on cut end. The tender box has all flaps with tape repair.



2336

Lionel prewar O gauge semi-scale 2954 Pennsylvania boxcar with high-rise simulated knuckle couplers and black journals in OB with original cardboard insert and cotton wrap. The boxcar has a couple of tiny nicks, otherwise the car is C8. The box is complete with all flaps.



2337

Lionel prewar O gauge 2955 semi-scale black Shell tank car with high-rise simulated knuckle couplers, black journals and an instruction sheet in OB with original cardboard insert and cotton wrap. The decals on the car are fully intact. The car is C8. The box is complete with all flaps and has tape repair.



2340

Lionel prewar O gauge Sears passenger set no. 5974 with Lionel no. 6500EW, circa 1937 in individual OBs and set box. The set contains the following; 264E black Commodore Vanderbilt steam loco with nickel trim and brass L plate on boiler front, 265W Lionel Lines tender with nickel trim and journals, two 609 Pullmans, a 611 observation car, instruction booklet, individual with connecting ties, tube of lubricant and lockon and a no. 88 controller in individual OB. The light blue cars have silver inserts and roofs and no journals. The loco box has two original cardboard inserts. The die-cast cab on the loco is solid and intact. One roof on one of the Pullmans has some nicks, otherwise the set is C8. One of the Pullman boxes is missing exterior flaps. The other boxes are complete with all flaps. The set box is complete with all flaps and label is intact with nice color graphics.



2338

Lionel prewar O gauge semi-scale 2956 die-cast Baltimore and Ohio hopper with high-rise simulated knuckle coupler in OB that has an original cardboard insert and cotton wrap, C8. The box is complete with all flaps and has tape repair.



2341

Lionel prewar O gauge no. 76 warning bell and shack with a white die-cast cross buck and nickel finial in a damaged box, C7.



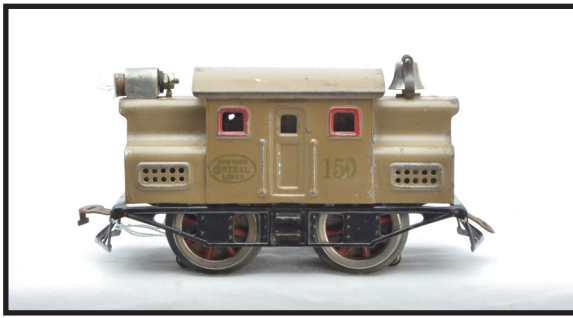
2339

Lionel prewar O gauge semi-scale 2957 die-cast New York Central caboose that has a high-rise simulated knuckle coupler and black journals in OB that has an original cardboard insert and cotton wrap. The catwalk is solid and straight. The caboose is C8. The box is complete with all flaps and has tape repair.



2342

Lionel prewar O gauge orange passenger set no. 268, circa 1928-29. The set contains the following; 256 rubber-stamped electric 0-4-4-0 loco with brass window inserts, brass and nickel trim, two 710 Pullmans and a 712 observation car. The cars have dark olive inserts, maroon doors, NEW YORK CENTRAL LINES above the windows and nickel journals. The wheels on the loco are starting to disintegrate. The set has a few minor nicks, otherwise is C8.



2343

Lionel prewar O gauge no. 150 scarce Mojave 0-4-0 electric loco rubber-stamped New York Central Lines with red window trim and nickel trim, C6.



2344

Lionel prewar O gauge promotional lithographed freight set no. 6415, circa 1939 in individual OBs and set box. The set contained the following; 1688 gunmetal 2-4-2 steam loco, 1689T Lionel Lines tender with nickel trim and journals, 1679 yellow Baby Ruth boxcar with a peacock roof, orange doors and door guides, 1680 orange Shell tank car with nickel trim and a 1682 red caboose with cream and black details. The set is C7-8. The loco box has an original cardboard insert. The individual OBs are missing flaps and some are damaged. The set box is complete with all flap but shows wear. The label is intact but faded.



2345

Lionel prewar O gauge 815 pea green tank car with unusual maroon frame, brass trim and nickel journals in OB, C8. The box has all flaps attached with tape repair.



2346

Lionel prewar O gauge two-tone blue passenger set no. 190W, circa 1938-39 in individual OBs and set box. The set contains the following; 226E black 2-6-4 steam loco, 2226W twelve-wheel Lionel Lines tender with nickel journals, 2615 baggage, 2613 Pullman and a 2614 observation car. The cars have white inserts, nickel trim and journals. The loco and tender are C8. The cars are C7-8. The loco and tender have original cardboard inserts. The individual OBs are missing most flaps and show heavy wear. The set box is complete with all flaps and has label intact. The set box shows wear.



2347

Lionel prewar two no. 54 pea green double gooseneck lamp posts, C7.



2348

Lionel prewar O gauge dark green passenger set no. 79, circa 1916 in set box with three original cardboard inserts. The set contains the following; 706 electric 0-4-0 loco with red windows rubber-stamped NEW YORK CENTRAL LINES, 602 mail car, two 601 Pullmans, no. 88 rheostat, lockon and three wires. The eight-wheel cars have wood grain inserts, no journals and NEW YORK CENTRAL LINES above the windows. The set is C7. The set box lid has four split corners but both labels are intact.



2349

Lionel prewar two 54 maroon double gooseneck lamp posts, C6-7.



2350

Lionel prewar O gauge very scarce Special no 2 Macys Fireball Express passenger set, circa 1936 in individual OBs and set box. The set contains the following; 261E black 2-4-2 steam loco with all nickel trim and red striping, 261T Lionel Lines tender with brass plates on the sides and back and nickel trim and journals, two 607 Pullmans and a 608 observation car with a New York Central System plate on the back of the railing on the observation deck. The red cars have cream inserts and Macy Special plates under the windows and nickel journals. Included with the loco is an original envelope with two no. 390 76 flags. The loco and tender are C8 and the cars are C7-8. The loco box has an original cardboard insert. The individual boxes have most all flaps attached. The set box is stamped Macys Fireball Express and label is stamped SPEC 2. The set box is complete with all flaps and label is fully intact.



2351

Lionel prewar 435 power station with 45N green base, cream walls mustard roof cornices, white windows and doors, red window and door frames, red skylight, aluminum chimney and brass plates, C7.



2352

Lionel prewar O gauge freight set no. 141W circa 1939-1940 in individual OBs and set box. The set contains the following; 224E black 2-6-2 steam loco, 2224W Lionel Lines die-cast whistle tender, 2652 yellow gondola with nickel trim, 2654 orange Shell tank car with nickel trim and 2657 red rubber-stamped caboose with ivory inserts and red end railings. The tender and cars have black journals. The loco and tender are C8. The cars are C7-8. The loco and tender boxes have original cardboard inserts. The individual OBs are missing some flaps and show wear. The set box has all flaps attached and label is mostly intact.



2353

Lionel prewar O gauge 253 harder to find maroon 0-4-0 electric loco with black lettered brass plates and brass and nickel trim in OB, C6-7. The box is complete with all flaps.



2354

Lionel prewar O gauge uncataloged promotional peacock Special 1 passenger set, circa 1930 in individual OBs and set box. The set contains the following; 253E electric 0-4-0 loco with E rubber-stamped on each side, orange inserts and striping on the frame edge black lettered brass plates, brass and nickel trim, two 607 Pullmans and a 608 observation car. The cars have orange inserts and nickel journals. Except for a couple of nicks the set is C8. All of the individual OBs are stamped P. BLUE. The loco box is complete with all flaps. The car boxes have most all flaps attached. The set box has four split corners and a small section missing off of one side. Both labels are fully intact.



2355

Lionel prewar O gauge eleven no. 60 45N green telegraph posts with red cross arms, black bases, white porcelain insulators and nickel finials in OBs. The telegraph posts are C7. The boxes have most all flaps attached.



2358

Lionel prewar O gauge dark green passenger set no. 98, circa 1925 in set box. The set contains the following; 253 electric loco with brass and nickel trim, two 610 Pullmans and a 612 observation car. The cars have maroon inserts and NEW YORK CENTRAL LINES above the windows and no journals. Also included is a no. 88 rheostat. The set is C7. The set box has four split corners and some staining. The labels are fully intact.



2356

Lionel prewar O gauge orange passenger set no. 242E, circa 1933-34 in individual OBs, except for the Pullman and set box. The set contains the following; 259E black 2-4-2 steam loco with brass and copper trim, 259T four-wheel Lionel Lines tender with brass plates, nickel trim and copper journals, 603 Pullman and 604 observation car. The light orange cars have terra cotta roofs, cream inserts and copper journals. The set is C7-8. The loco box has an original cardboard insert. The individual OBs are missing some flaps and show some wear. The set box is complete with all flaps and label is intact.



2359

Lionel prewar O gauge 820 orange Illinois Central boxcar, circa 1915 numbered 65784 with rare maroon roof. Lionel initially produces these orange boxcars with maroon roofs before changing the color scheme to all orange. The car is C5.



2357

Lionel prewar O gauge 156X scarce dark green rubber-stamped New York Central Lines 0-4-0 electric loco with no leading or trailing trucks, wafer switch for reversing, red windows and nickel trim, circa 1923-24. The loco is C6.



2360

Lionel prewar O gauge chrome Flying Yankee streamlined passenger set no. 267E with fluted sides, version with a gunmetal nose and tail. The set contains the following; 616E loco, two 617 coaches, 618 observation and three vestibules. The coaches are the versions with one door. The set is C7-8 except for the observation car which has been repaired and is C6-7.



2361

Lionel prewar O gauge two no. 53 Mojave lamp posts, C7.



2362

Lionel prewar O gauge orange passenger set no. 142E, circa 1931-32 including; 254E electric loco with red lettered brass plates and brass and nickel trim, two 605 Pullmans and a 606 observation car. The cars have cream inserts and nickel journals. The Pullmans have apple green doors and the observation car has cream doors. The set is C7.



2363

Lionel prewar O gauge two no. 57 yellow lamp posts with Main Street and Broadway street names in worn OBs, C6-7.



2364

Lionel prewar O gauge operating freight set no. 831W, circa 1941 in individual OBs and set box. The set contains the red following; 225 black steam loco, 2235W plastic Lionel Lines tender, 3659 dump car, 3652 yellow automatic gondola with red rubber-stamped lettering and wooden barrels, 3651 lumber car with four wooden logs, 2757 Tuscan Pennsylvania caboose, 97 coal elevator with gray structure, controller, two bags of no. 206 artificial coal and 160 bin, three 160 bins for the unloading cars, UTC lockon and a RCS remote control track set. The set is C8. The coal elevator box has original cardboard inserts. The individual OBs are missing some flaps and have tape repair. The set box has been opened from the bottom and has split corners. The label is fully intact.



2365

Lionel prewar O gauge two no. 58 brown/maroon lamp posts in OBs, C7. The OBs are missing some interior flaps and show wear.



2366

Lionel prewar O gauge four-car aluminum City of Portland Union Pacific passenger set no. 758W, circa 1936 in individual OBs and set box. This set contains the following; 752W power car, two 753 coaches, 754 observation and three vestibules. The die-cast underbellies are solid and intact. The set is C6. The individual OBs are complete with all flaps. The set box is complete with all flaps and label is intact. The set box is worn and has staining.



2367

Lionel prewar O gauge five no. 58 peacock lamp posts all with cracked lamp shades and three no. 58 cream lamp posts, C5.



2368

Lionel prewar O gauge red lithographed passenger set no. 1067E, circa 1936 in individual OBs and set box. The set contains the following; 1689E Lionel Jr. gunmetal steam loco with brass L on the front and nickel trim, 1689T Lionel Lines tender with nickel trim and journals, two 1690 Pullmans, a 1691 observation car, eight curve track sections, four straight track sections, an individual OB with lock on and connecting ties and an inspection card. The red cars have cream inserts, nickel hand rails and nickel journal. The set is C7-8, except for the tender which is C6. The loco box has an original cardboard insert. The individual OBs have most flaps attached. The set box is complete with all flaps and label is mostly intact, but faded.



2369

Lionel prewar O gauge 442 illuminated landscaped diner in OB. The shrub on one end is missing. The diner is C7-8. The OB is sealed on one end and complete with all flaps.



2370

Lionel prewar O gauge uncataloged Special passenger set, circa 1934. The set contains the following; 259E black 2-4-2 steam loco with brass L plates under the cab windows and nickel trim, 261T Lionel Lines tender with brass trim and copper journals, 1686 baggage car with copper journals, 1685 Pullman and 1687 observation car. The red cars have maroon roofs, cream inserts and nickel trim. The 1685 and 1687 cars have nickel journals. The set is C7, except for the tender which is C8. The passenger cars are in OBs. The OBs are complete with all flaps.



2371

Lionel prewar O gauge 203 black steam 0-6-0 switcher with a 2203T Lionel Lines slope-back tender that has black journals. The loco and tender are C7-8.



2372

Lionel prewar O gauge peacock passenger set no. 236, circa 1930 in individual OBs and set box. This set contains the following; 258 black steam loco with brass and copper trim and orange striping, 258T Lionel Lines tender with brass trim, nickel journals and orange striping, two 607 Pullmans, a 608 observation car, individual box of connecting ties and an instruction booklet. The peacock passenger cars have orange inserts and nickel journals. The set is C8. The individual boxes are missing some flaps and show wear. The car boxes are marked P. BLUE. The set box has no split corners and both labels are intact.



2373

Lionel prewar O gauge 260E black 2-4-2 steam loco with green frame, brass and copper trim and a 260T Lionel Lines tender with green frame, brass and copper trim and copper journals. The engine has been repainted and the tender is C7.



2374

Lionel prewar O gauge original set box and individual boxes ONLY for the City of Denver passenger set no. 299W. The set box, engine box and all of the car boxes are marked with an X on each end. This set consisted of a 636W power car, two 637 coaches and 638 observation. The loco box is complete with all flaps, is sealed on one end and has an original cardboard insert. The car boxes are missing some tuck flaps. The set box is complete with all flaps and is dated 1937. The label is intact. The set box does have some staining and shows wear.



2375

Lionel prewar O gauge 763E gunmetal Hudson steam loco with a desirable 2226W gray die-cast heat-stamped Lionel Lines coal pile tender with black journals, circa 1940. Except for a couple of minor nicks the loco and tender are C8.



2376

Lionel prewar O gauge promotional lithographed freight set 7024, circa 1941 in individual OBs and set box. The set contains the following; 1688 black 2-4-2 steam loco with nickel trim, 1689T Lionel Lines tender with black journals, 1679 yellow Baby Ruth boxcar with maroon roof, orange doors and door guides, 1680 orange Shell tank car and a 1682 red caboose with ivory details. The set is C6-7. The loco box has tape repair. The other individual boxes have some missing and detached flaps. The set box is complete with all flaps and shows heavy wear. The label is intact.



2377

Lionel prewar O gauge 905 outfit containing a 201 black 0-6-0 switcher and 2201T Lionel Lines slope-back tender in a master carton. The loco and tender have light run time and is a strong C8. The tender is in an individual OB with an original cardboard insert and the loco has only an original cardboard insert. The tender box is complete with all flaps. The master carton is very clean and has all flaps attached. The label is fully intact and has bright and vivid colors.



2378

Lionel prewar O gauge dark green passenger set no. 292, circa 1927 in set box. The set contains the following; 248 electric 0-4-0 loco with brass inserts, brass and nickel trim, 629 Pullman, 630 observation car, lockon, track clips, eight curve track sections and a no. 068 pea green warning signal. The four-wheel passenger cars have maroon inserts and no journals. The set is C7-8. The set box lid has three split corners. Both labels are mostly intact.



2379

Lionel prewar O gauge 98 coal bunker with black base, aluminum structure, cream building with red roof and ladder in OB, C7. The box is complete with all flaps and label is intact but faded.



2380

Lionel prewar O gauge freight set no. 859B, circa 1941-42 in individual OBs and set box. The set contains the following; 227 black 0-6-0 switcher with original cardboard insert, 2227B Pennsylvania slope-back bell ringing tender, 2812X burnt orange gondola, X2758 Tuscan Pennsylvania automobile car, a 2757X Tuscan Pennsylvania caboose, 169 controller, box ONLY for connecting ties, lockon and two wires. The tender and cars have black journals. The gondola has a couple of minor nicks, otherwise is C8. The individual OBs have most all flaps attached. The set box is complete with all flaps but the center of the label is missing.



2381

Lionel prewar O gauge two no. 59 pea green lamp posts, C7.



2382

Lionel prewar O gauge Blue Comet passenger set no. 194W, circa 1938-39. The set contains the following; 263E Blue Comet loco with all nickel trim, 2263W tender with nickel trim and journals, 2615 baggage, 2613 Pullman and 2614 observation car, C7. The engine is in an individual OB that has an original cardboard insert. The OB is complete with all flaps.



2383

Lionel prewar no. 54 State brown double gooseneck lamp posts, C7-8.



2384

Lionel prewar O gauge two-tone green passenger set no. 1190W, circa 1941 in individual OBs and set box. The set contains the following; 1666 black steam loco, 2666W Lionel Lines plastic tender, two 2640 Pullmans and a 2641 observation car. The set is C8. The loco and tender boxes have original cardboard inserts. The individual OBs have all flaps attached. The set box is complete and has label intact but is very faded.



2385

Lionel prewar O gauge 230 B-6 black 0-6-0 steam switcher and 2230B Pennsylvania slope-back tender, circa 1939, C8.



2386

Lionel prewar O gauge Tuscan passenger set no. 140W, circa 1941 in individual OBs. The set contains the following; 224 steam loco, 2224W Lionel Lines tender, two 2642 Pullmans and a 2643 observation. The Tuscan passenger cars have gray inserts and black journals. The set is C8. The loco and tender boxes have original cardboard inserts. The individual OBs are missing some flaps and have tape repair.



2387

Lionel prewar O gauge 127 Lioneltown station with gray base, mustard walls, maroon roof, dark green window and door frames, apple green window inserts, wood grained doors, lithographed brick chimneys and brass plates in OB, C7. The box is missing three flaps on one end. The label is fully intact.



2388

Lionel prewar O gauge passenger set no. 255, circa 1924 in set box. The set contains the following; 153 dark green NYC electric loco with red window trim, nickel trim and Lionel Corp. plate, 603 Pullman, 604 observation car, eight curve track sections, four straight sections, twelve connecting ties and inspection card. The eight-wheel passenger cars are orange with maroon inserts. The set is C7-8. The set box has four original cardboard inserts and two split corners. The labels are mostly intact.



2389

Lionel prewar O gauge no. 1662 black 0-4-0 steam loco and 2203T Lionel Lines slope-back tender. The loco and tender have incorrect postwar trucks. The loco front coupler bracket is split. Loco and tender are C7.



2390

Lionel prewar O gauge passenger set no. 246E, circa 1933 in individual OBs. The set contains the following; 262E black 2-4-2 steam loco with brass and copper trim, 262T die-cast Lionel Lines tender with brass trim and copper journals, 602 baggage, 600 Pullman and a 601 observation car. The gray passenger cars have red roofs, ivory inserts and copper journals. Except for a couple of nicks the set is C8. The individual OBs are missing some flaps and show wear.



2391

Lionel prewar two 069/69N warning bell signals, one red with black lettered nickel cross buck and bell mechanism and one maroon green with black lettered brass cross buck and nickel bell mechanism. The signals are C7.



2392

Lionel prewar O gauge pea green passenger set no. 266, circa 1930 in individual OBs. This set contains the following; 254 electric 0-4-0 loco with black lettered brass plates, brass and nickel trim, orange hatches, two 610 Pullmans and a 612 observation car. The passenger cars have orange inserts and nickel journals. The engine is C7-8. One of the 610 Pullmans is C6 and the other two cars are C7. The engine and the 610 boxes are marked L. GREEN. The other two car boxes are missing all end flaps. Boxes are worn.



2393

Lionel prewar accessories in OBs including; 270 maroon single span bridge with brass plate for O gauge and two 91 die-cast circuit breakers, one Mojave with brass light cover and one State brown with nickel light cover. The bridge and 91 Mojave circuit breaker are C7-8. The State Brown circuit breaker is C8. The box for the bridge is missing two interior flaps and has a hole on one side. The 91 circuit breaker boxes are complete with all flaps and one with an original cardboard ring insert.



2394

Lionel prewar O gauge lithographed freight set no. 1087, circa 1939-41 in damaged individual boxes, except for the 1680 tank car. The set contains the following; 1664 black 2-4-2 steam loco, 1689T Lionel Lines tender with nickel trim and black journals, 1679 yellow Baby Ruth boxcar with maroon roof, orange doors and door guides, 1680 orange Shell tank car, 1682 red caboose with cream details, 1039 35-watts transformer, box with connecting ties, lockon, wires and instruction sheets. The cars have black journals. The set is C7-8.



2395

Lionel prewar O gauge 2814 cream automobile boxcar with maroon roof and door guides, nickel trim and journals, C8.



2396

Lionel prewar O gauge 2814R white refrigerator car with light blue roof, aluminum frame, nickel trim and journals, C7.



2397

Lionel prewar O gauge two-tone red passenger set no. 298W, circa 1936-37. The set contains the following; 238E gunmetal Pennsylvania torpedo style steam loco with nickel trim, 265W Lionel Lines tender with all nickel trim and journals, 602 baggage car, 600 Pullman and a 601 observation car. The two-tone red passenger cars have ivory inserts, nickel trim and journals. The set is C7-8.



2398

Lionel prewar O gauge 813 cream cattle car with a maroon roof and door guides, all nickel trim and journals in OB, C7.



2399

Lionel prewar O gauge 816 red hopper with brass plates, nickel trim and journals, C6-7.



2400

Lionel prewar O gauge freight set no. 139W, circa 1940 in individual OBs and set box. The set contains the following; 229 black 2-4-2 steam loco, 02689W Lionel Lines tender with nickel plates and black journals, 2651 45N green lumber car with wood load, 2654 orange Shell tank, a 2657 red Lionel Lines caboose with ivory windows and red end railings, RCS remote control track set and a 167 whistle controller. The cars have nickel trim and black journals. The loco is C8 and the rest of the set is C7-8. The loco box has an original cardboard insert. The individual OBs are missing and have some detached flaps. The set box is complete with all flaps and label is intact.

Toy & Train Specialists



The Jerry Poch Train Collection Session 5



Stout Auctions
2884 Mercer-West Middlesex Rd
West Middlesex, PA 16159
(724) 528-1500
katy@stoutauctions.com

katy@stoutauctions.com